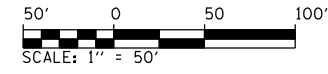


F.A.P. RTE.	SECTION	COUNTY	TOTAL SHEETS	SHEET NO.
75	84-12; 11-3	•	729	230
STA. 0+00		TO STA. 12+05.63		
FED. ROAD DIST. NO. 5 ILLINOIS FED. AID PROJECT				
• SANGAMON AND CHRISTIAN				

PROP. ϕ NORTH TRANSITION CURVE-1 DATA
 PI STA. = 2+51.33
 $\Delta = 8^\circ 39' 14''$ (LT)
 $D = 2^\circ 51' 54''$
 $R = 2,000.00'$
 $T = 151.33'$
 $L = 302.04'$
 $E = 5.72'$
 P.C. STA. = 1+00.00
 P.R.C. STA. = 4+02.04
 S.E. = SEE BELOW

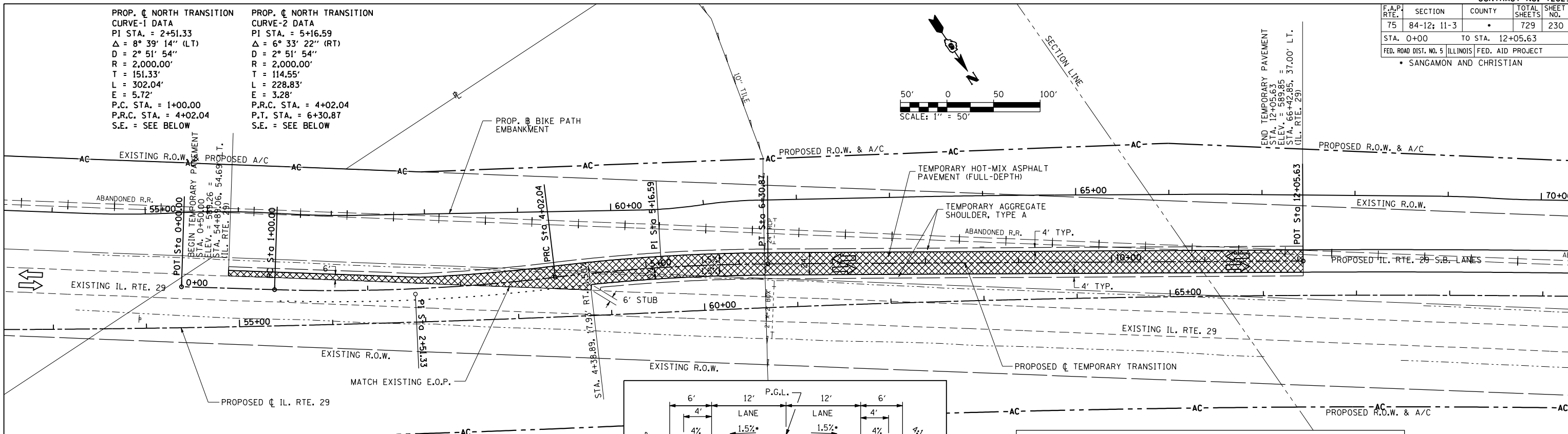
PROP. ϕ NORTH TRANSITION CURVE-2 DATA
 PI STA. = 5+16.59
 $\Delta = 6^\circ 33' 22''$ (RT)
 $D = 2^\circ 51' 54''$
 $R = 2,000.00'$
 $T = 114.55'$
 $L = 228.83'$
 $E = 3.28'$
 P.R.C. STA. = 4+02.04
 P.T. STA. = 6+30.87
 S.E. = SEE BELOW



PLAN	SURVEYED	DATE
	BY	
	NOTED	
	CHECKED	
	DATE	

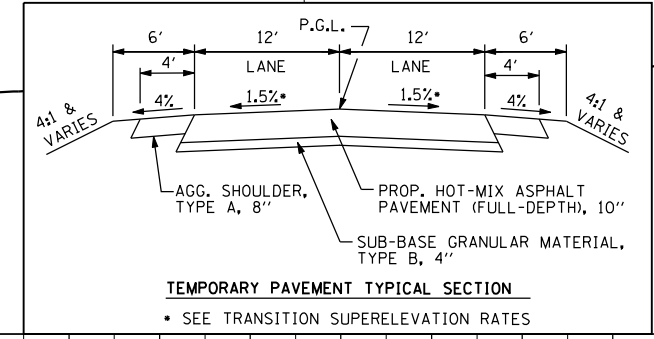
PROFILE	SURVEYED	DATE
	BY	
	NOTED	
	CHECKED	
	DATE	

Sheet001
 L:\1007\3030660\Draw\Sheet.s\Draw\Sheet.s\672829-sht-MOT_northtrans.dgn
 4/23/2012



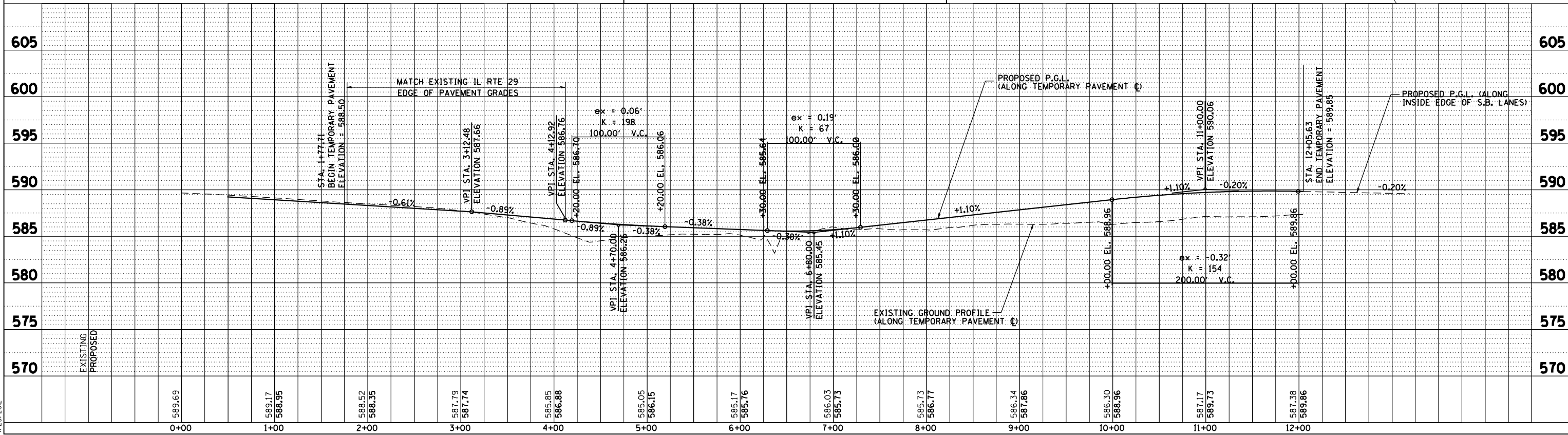
• TRANSITION SUPERELEVATION RATES	
STA. TO STA.	S.E. RATE
4+38.89 TO 5+09, RT.	1.5% TO 0%
5+09 TO 5+79, RT.	0% TO 1.5%
4+39 TO 5+79, LT.	1.5%

- LEGEND**
- TEMPORARY TRANSITION PAVEMENT
 - DIRECTION OF TRAFFIC FLOW
 - TEMPORARY DRAINAGE PATH
 - PERMANENT DRAINAGE PATH



HORIZONTAL CONTROL DATA NORTH TRANSITION

P.O.T. STA. 0+00.00 N: 1103542.618 E: 2500918.523	P.I. STA. 2+51.33 N: 1103688.295 E: 2500713.726	P.I. STA. 5+16.59 N: 103808.052 E: 2500476.349	P.O.T. STA. 12+05.63 N: 1104186.771 E: 2499900.399
P.C. STA. 1+00.00 N: 1103600.582 E: 2500837.037	P.R.C. STA. 4+02.04 N: 1103756.456 E: 2500578.620	P.T. STA. 6+30.87 N: 1103870988 E: 2500380.638	



PLAN & PROFILE: NORTH TRANSITION FOR STAGE CONSTRUCTION