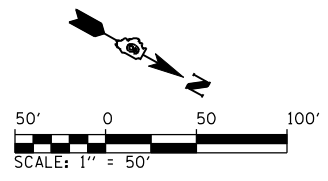
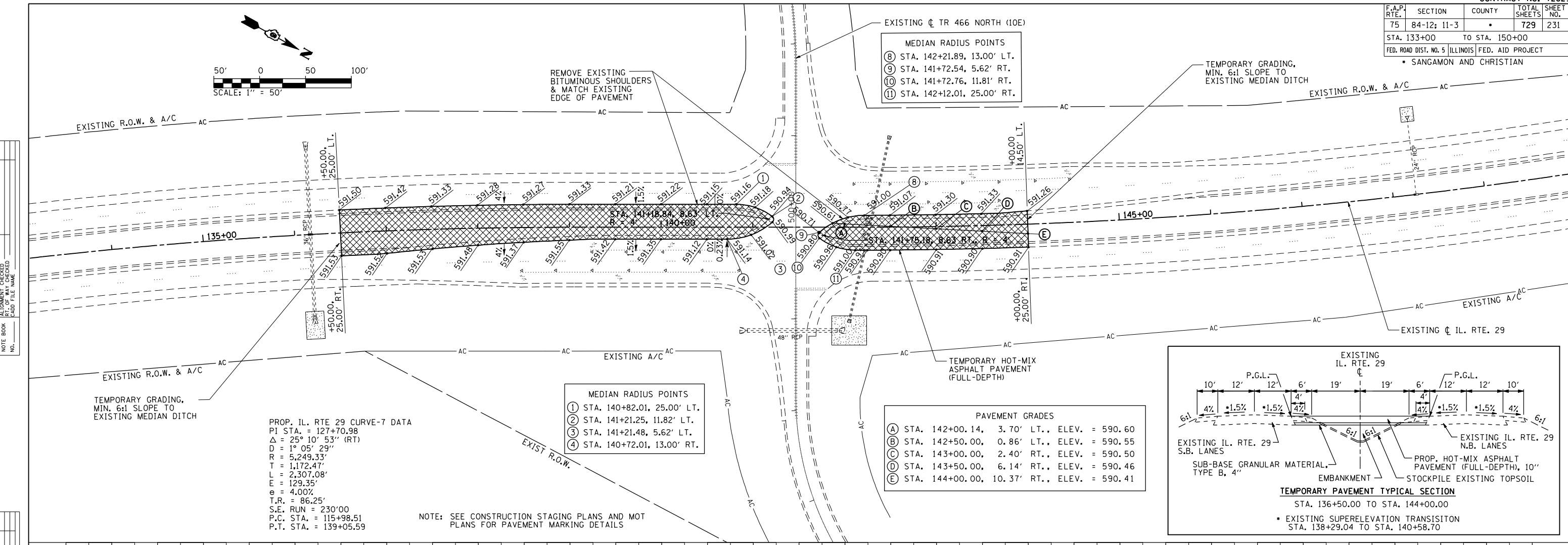


F.A.P. RTE.	SECTION	COUNTY	TOTAL SHEETS	SHEET NO.
75	84-12; 11-3	•	729	231
STA. 133+00		TO STA. 150+00		
FED. ROAD DIST. NO. 5 ILLINOIS FED. AID PROJECT				
• SANGAMON AND CHRISTIAN				



PLAN	SURVEYED	BY	DATE
	NOTED		
	CHECKED		
	BY		
	NO. OF WAY CHECKED		
	NO.		
	FILE NAME		

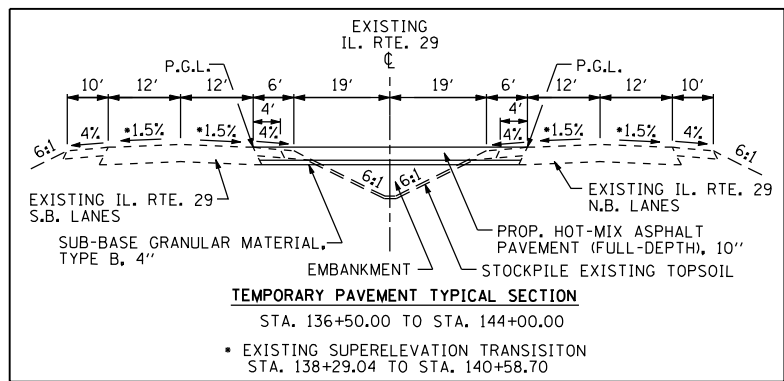
PROFILE	SURVEYED	BY	DATE
	NOTED		
	CHECKED		
	BY		
	STRUCTURE NOTATIONS CHKD		
	NO.		



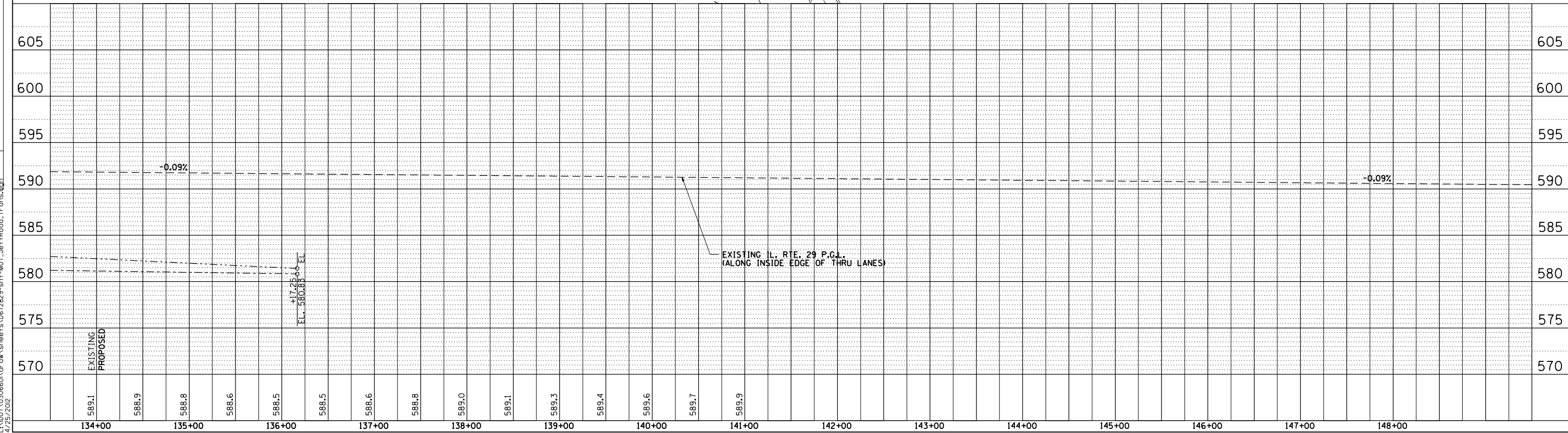
PROP. IL. RTE 29 CURVE-7 DATA
 PI STA. = 127+70.98
 $\Delta = 25^\circ 10' 53''$ (RT)
 $D = 1^\circ 05' 29''$
 $R = 5,249.33'$
 $T = 1,172.47'$
 $L = 2,307.08'$
 $E = 129.35'$
 $e = 4.00\%$
 $T.R. = 86.25'$
 $S.E. RUN = 230'00$
 $P.C. STA. = 115+98.51$
 $P.T. STA. = 139+05.59$

MEDIAN RADIUS POINTS
 ① STA. 140+82.01, 25.00' LT.
 ② STA. 141+21.25, 11.82' LT.
 ③ STA. 141+21.48, 5.62' LT.
 ④ STA. 140+72.01, 13.00' RT.

PAVEMENT GRADES
 (A) STA. 142+00.14, 3.70' LT., ELEV. = 590.60
 (B) STA. 142+50.00, 0.86' LT., ELEV. = 590.55
 (C) STA. 143+00.00, 2.40' RT., ELEV. = 590.50
 (D) STA. 143+50.00, 6.14' RT., ELEV. = 590.46
 (E) STA. 144+00.00, 10.37' RT., ELEV. = 590.41



NOTE: SEE CONSTRUCTION STAGING PLANS AND MOT PLANS FOR PAVEMENT MARKING DETAILS



Sheet001
 L:\1007\30306601\Draw\Sheet\Draw\Sheet\Draw\72829-sht-MOT-JettRoad-Trns.dwg
 4/25/2012