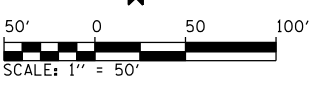
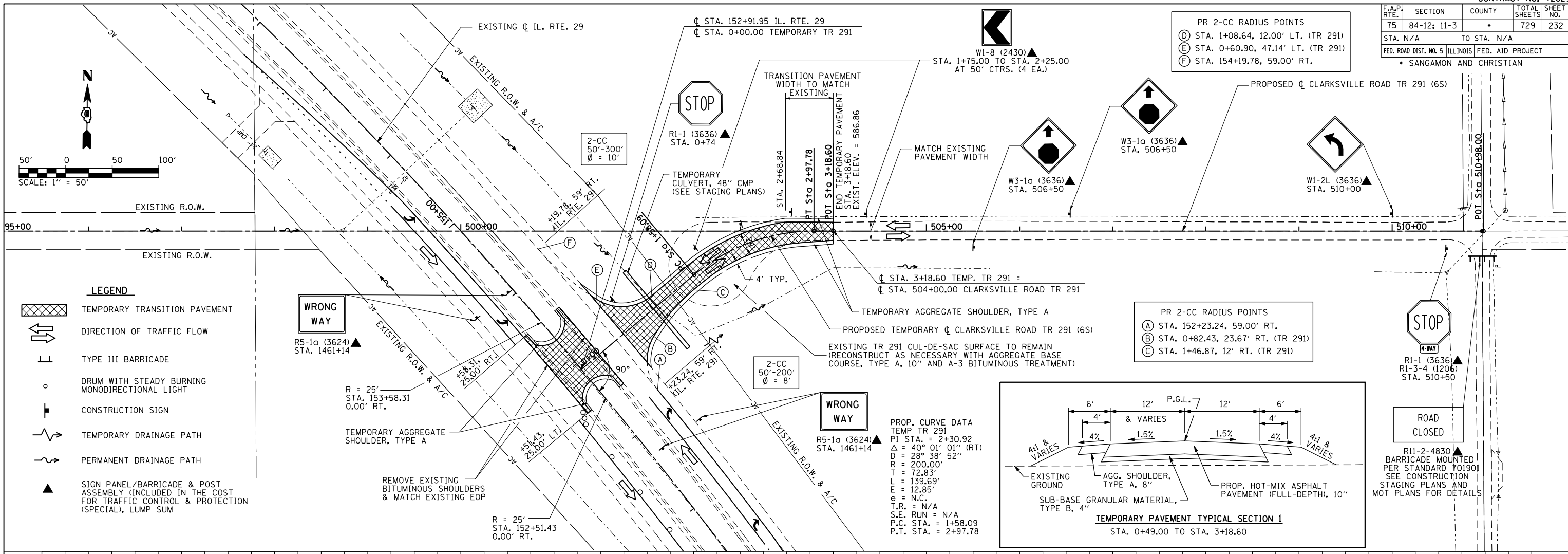
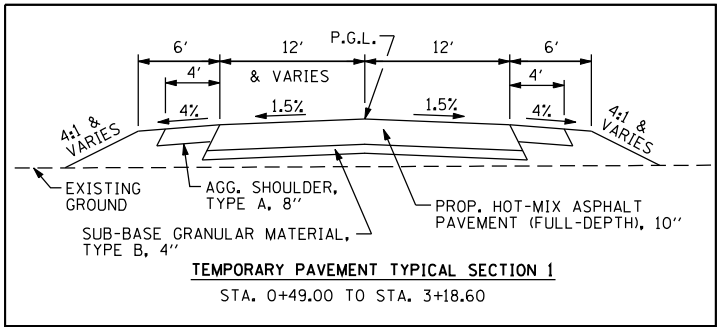


F.A.P. RTE.	SECTION	COUNTY	TOTAL SHEETS	SHEET NO.
75	84-12: 11-3	•	729	232
STA. N/A TO STA. N/A				
FED. ROAD DIST. NO. 5 (ILLINOIS) FED. AID PROJECT				
• SANGAMON AND CHRISTIAN				



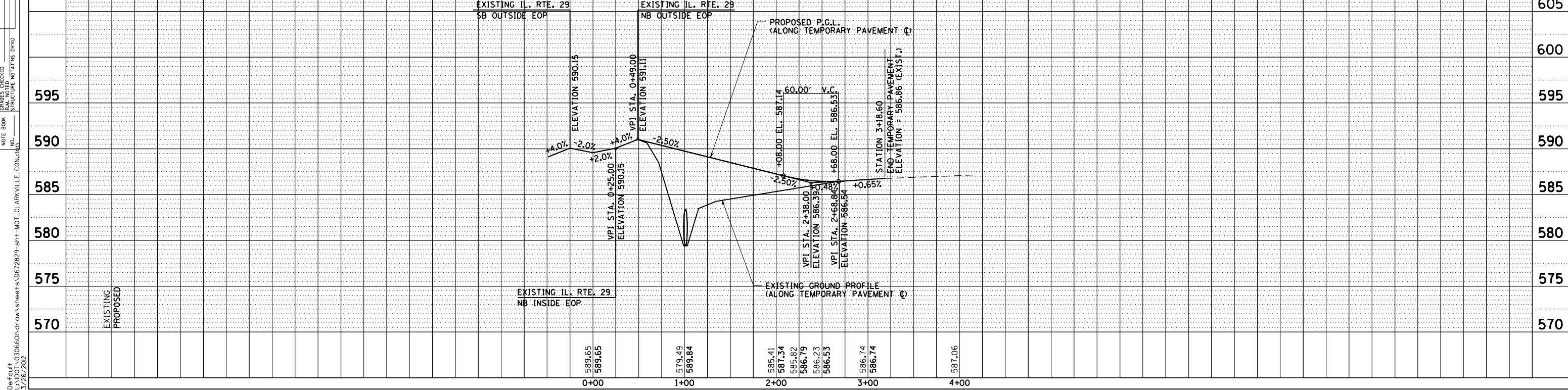
- LEGEND**
- TEMPORARY TRANSITION PAVEMENT
 - DIRECTION OF TRAFFIC FLOW
 - TYPE III BARRICADE
 - DRUM WITH STEADY BURNING MONODIRECTIONAL LIGHT
 - CONSTRUCTION SIGN
 - TEMPORARY DRAINAGE PATH
 - PERMANENT DRAINAGE PATH
 - SIGN PANEL/BARRICADE & POST ASSEMBLY (INCLUDED IN THE COST FOR TRAFFIC CONTROL & PROTECTION (SPECIAL), LUMP SUM)



PROP. CURVE DATA
TEMP TR 291
PI STA. = 2+30.92
 Δ = 40° 01' 01" (RT)
D = 28° 38' 52"
R = 200.00'
T = 72.83'
L = 139.69'
E = 12.85'
e = N.C.
T.R. = N/A
S.E. RUN = N/A
P.C. STA. = 1+58.09
P.T. STA. = 2+97.78

PLAN	SURVEYED	PLOTTED	CHECKED	DATE

PROFILE	SURVEYED	PLOTTED	CHECKED	DATE



Default
L:\NDOT\30306601\Draw\Sheet.s\672829-sht-1-MOT-CLARKVILLE.CON.dwg
3/26/2012