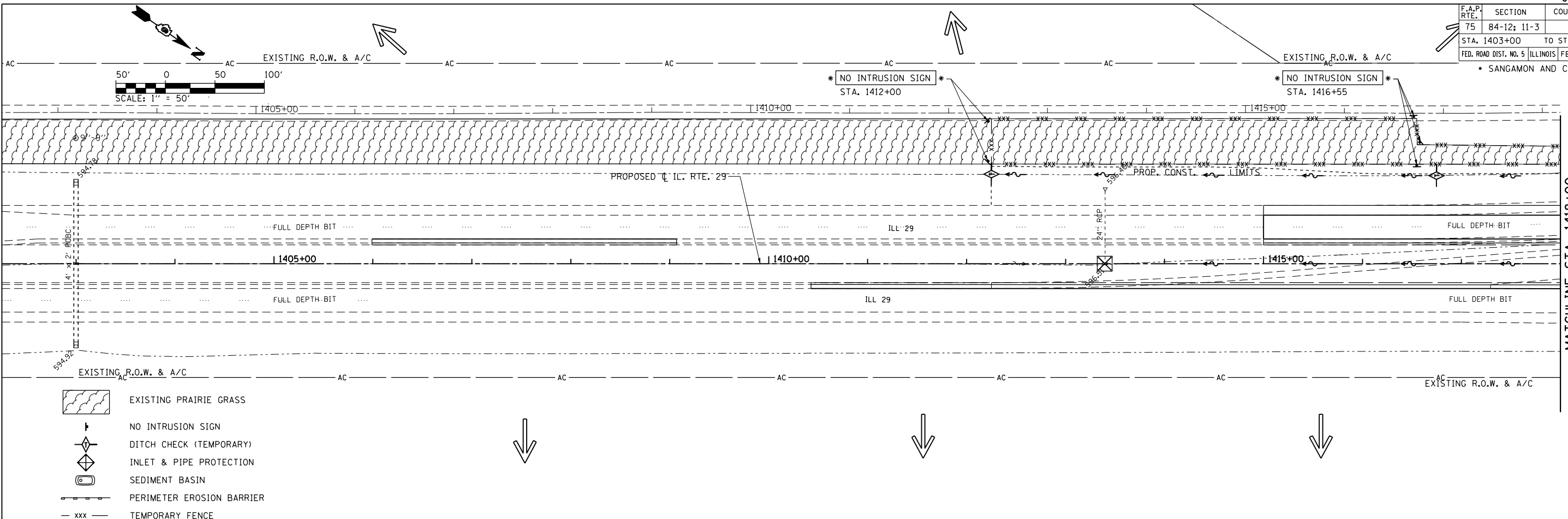
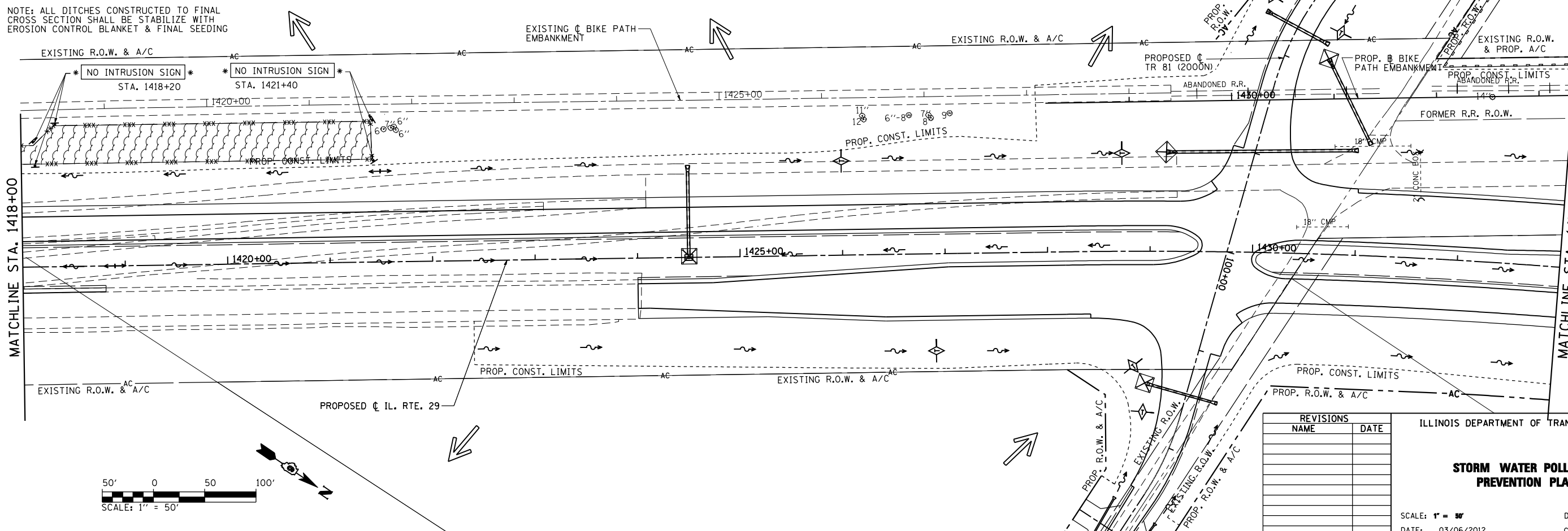


F.A.P. RTE.	SECTION	COUNTY	TOTAL SHEETS	SHEET NO.
75	84-12; 11-3		729	236
STA. 1403+00		TO STA. 1433+00		
FED. ROAD DIST. NO. 5 ILLINOIS FED. AID PROJECT				
SANGAMON AND CHRISTIAN				



- EXISTING PRAIRIE GRASS
- NO INTRUSION SIGN
- DITCH CHECK (TEMPORARY)
- INLET & PIPE PROTECTION
- SEDIMENT BASIN
- PERIMETER EROSION BARRIER
- TEMPORARY FENCE

NOTE: ALL DITCHES CONSTRUCTED TO FINAL CROSS SECTION SHALL BE STABILIZE WITH EROSION CONTROL BLANKET & FINAL SEEDING



REVISIONS	
NAME	DATE

ILLINOIS DEPARTMENT OF TRANSPORTATION

STORM WATER POLLUTION PREVENTION PLAN

SCALE: 1" = 50'

DATE: 03/06/2012

DRAWN BY: J.M.M.

CHECKED BY: J.M.M.

SWPPP_001
L:\DOT\030600\draw_sheets\030600\72829-sht-SWPPP_001.dgn
3/6/2012