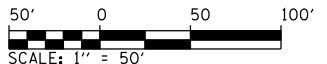
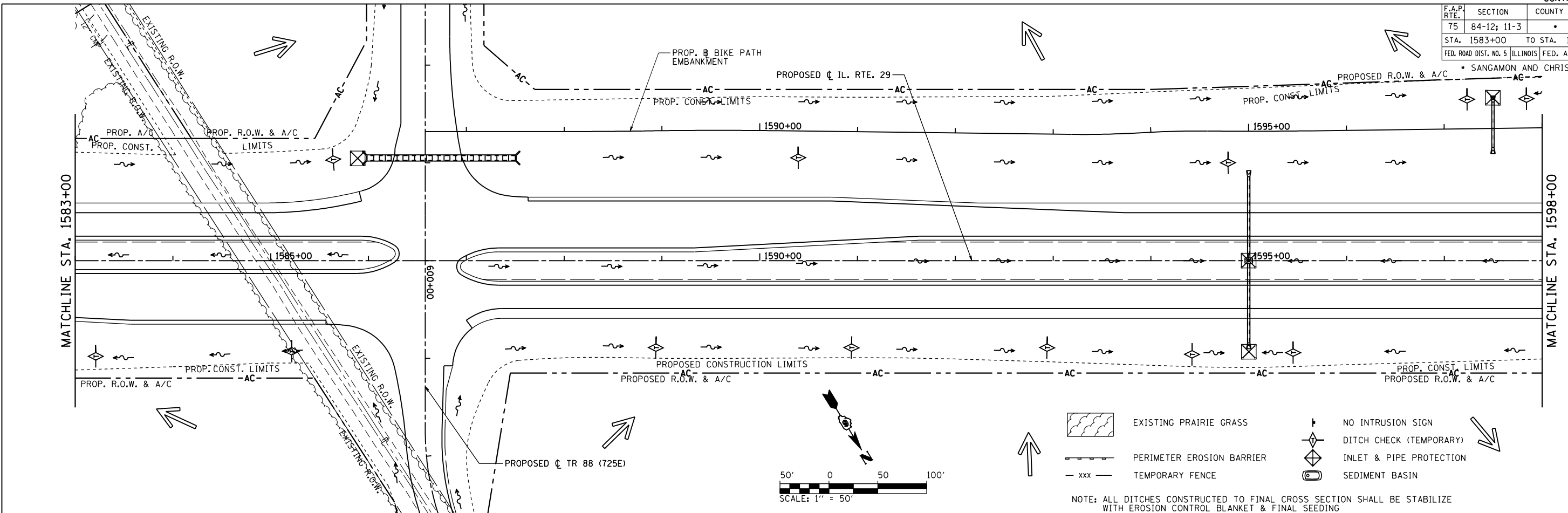
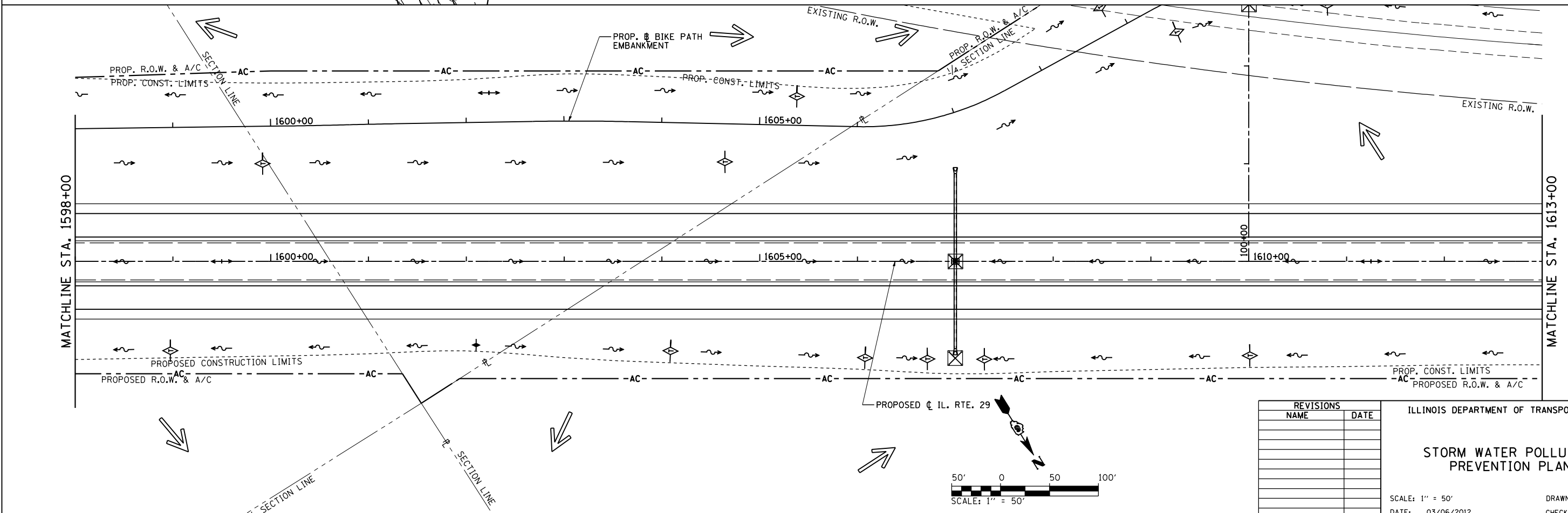


F.A.P. RTE.	SECTION	COUNTY	TOTAL SHEETS	SHEET NO.
75	84-12; 11-3		729	242
STA. 1583+00		TO STA. 1613+00		
FED. ROAD DIST. NO. 5 ILLINOIS FED. AID PROJECT				
SANGAMON AND CHRISTIAN				



- EXISTING PRAIRIE GRASS
- PERIMETER EROSION BARRIER
- TEMPORARY FENCE
- NO INTRUSION SIGN
- DITCH CHECK (TEMPORARY)
- INLET & PIPE PROTECTION
- SEDIMENT BASIN

NOTE: ALL DITCHES CONSTRUCTED TO FINAL CROSS SECTION SHALL BE STABILIZE WITH EROSION CONTROL BLANKET & FINAL SEEDING



REVISIONS	
NAME	DATE

ILLINOIS DEPARTMENT OF TRANSPORTATION

**STORM WATER POLLUTION PREVENTION PLAN**

SCALE: 1" = 50'

DATE: 03/06/2012

DRAWN BY: R.A.H.  
CHECKED BY: J.M.M.

SWPPP\_007  
L:\DOT\030601\Draw\Drawings\030601\Draw\Drawings\SWPPP\_007.dgn  
3/6/2012