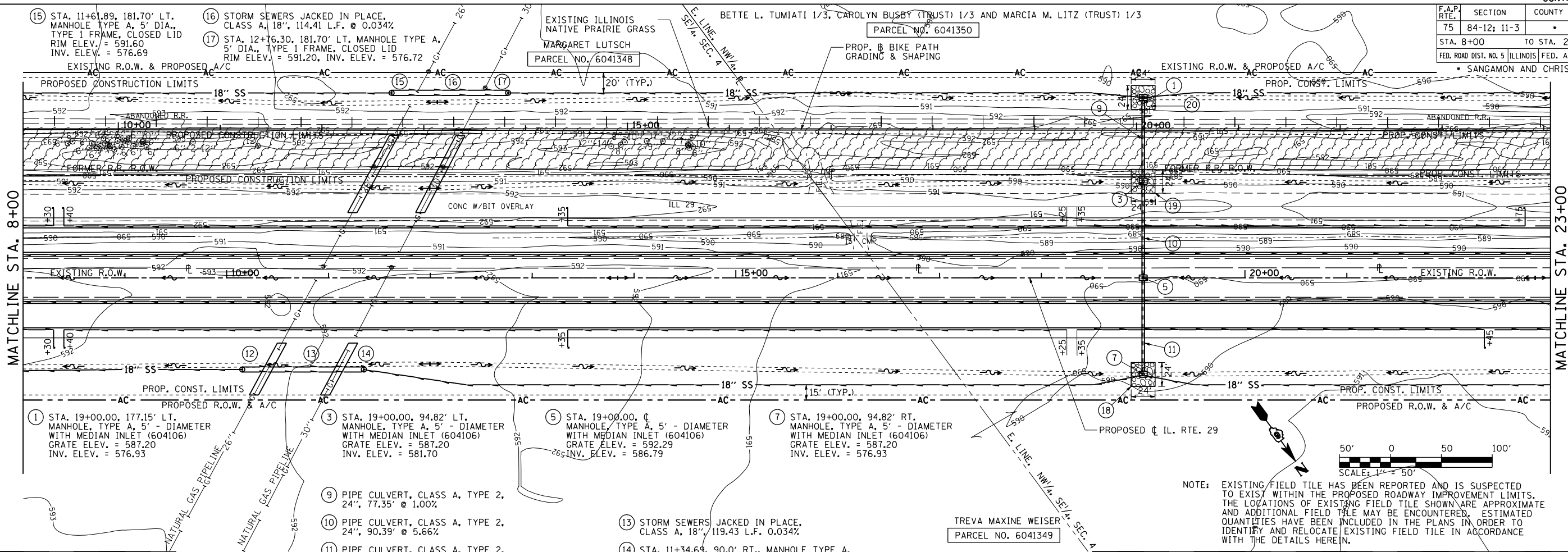


F.A.P. RTE.	SECTION	COUNTY	TOTAL SHEETS	SHEET NO.
75	84-12; 11-3		729	281
STA. 8+00		TO STA. 23+00		
FED. ROAD DIST. NO. 5 ILLINOIS FED. AID PROJECT				
SANGAMON AND CHRISTIAN				

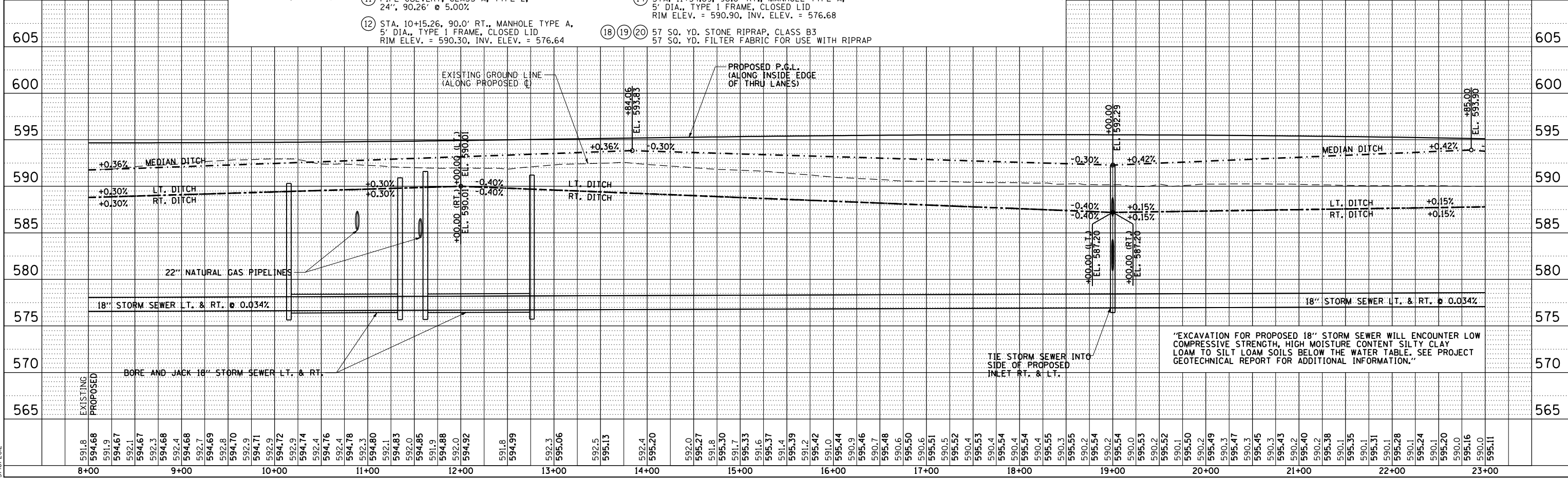
PLAN	SURVEYED	DATE
	PLotted	
	Checked	
	By	
	File Name	

PROFILE	SURVEYED	DATE
	Plotted	
	Checked	
	By	
	File Name	

Dr:\cadd\pnc009
L:\001\306601\dr\w\sheet\5.D672829-sht-DrainPnc001.dgn
3/16/2012



NOTE: EXISTING FIELD TILE HAS BEEN REPORTED AND IS SUSPECTED TO EXIST WITHIN THE PROPOSED ROADWAY IMPROVEMENT LIMITS. THE LOCATIONS OF EXISTING FIELD TILE SHOWN ARE APPROXIMATE AND ADDITIONAL FIELD TILE MAY BE ENCOUNTERED. ESTIMATED QUANTITIES HAVE BEEN INCLUDED IN THE PLANS IN ORDER TO IDENTIFY AND RELOCATE EXISTING FIELD TILE IN ACCORDANCE WITH THE DETAILS HEREIN.



"EXCAVATION FOR PROPOSED 18" STORM SEWER WILL ENCOUNTER LOW COMPRESSIVE STRENGTH, HIGH MOISTURE CONTENT SILTY CLAY LOAM TO SILT LOAM SOILS BELOW THE WATER TABLE. SEE PROJECT GEOTECHNICAL REPORT FOR ADDITIONAL INFORMATION."

DRAINAGE & UTILITY PLAN & PROFILE: IL. RTE 29 - STA. 8+00 TO STA. 23+00