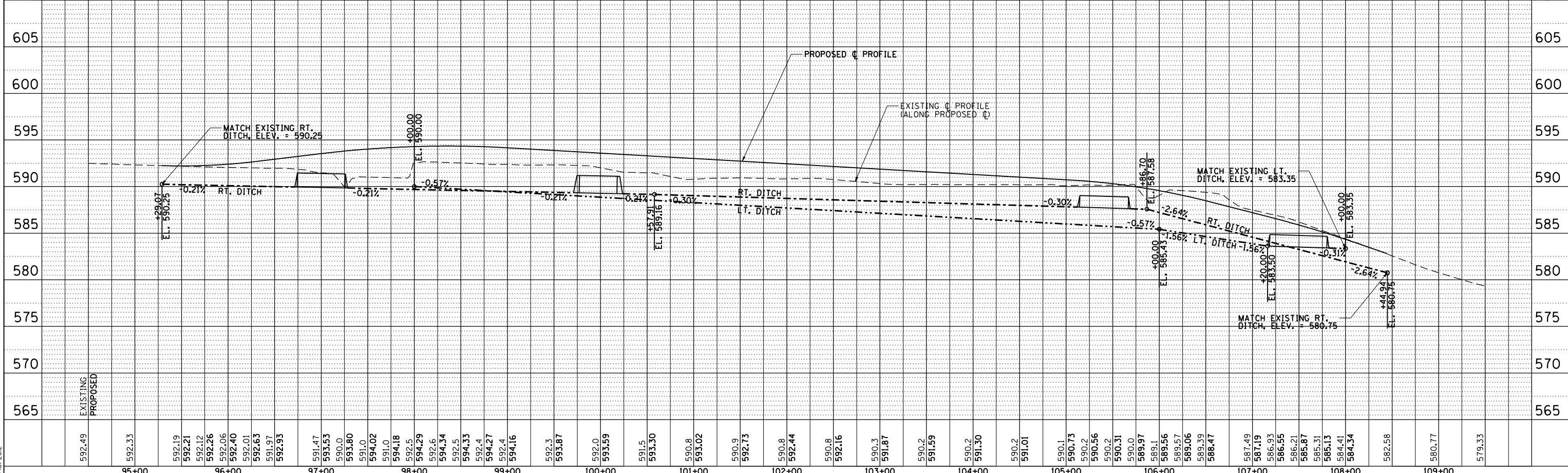
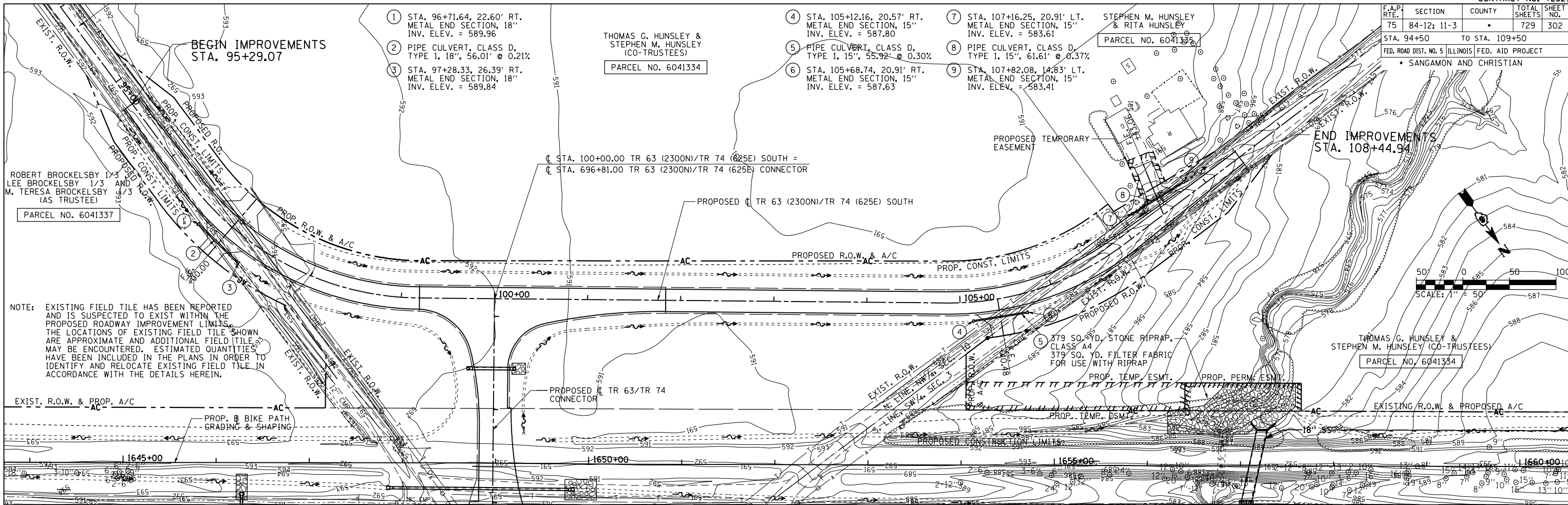


F.A.P. RTE.	SECTION	COUNTY	TOTAL SHEETS	SHEET NO.
75	84-12: 11-3		729	302
STA. 94+50 TO STA. 109+50		FED. ROAD DIST. NO. 5 (ILLINOIS) FED. AID PROJECT		
SANGAMON AND CHRISTIAN				

PLAN	SURVEYED	BY	DATE
	PLOTTED		
	CHECKED		
	NO. OF WAY CHECKED		
	NO. OF FILE NAME		



PROFILE	SURVEYED	BY	DATE
	PLOTTED		
	CHECKED		
	NO. OF WAY CHECKED		
	NO. OF STRUCTURE NOTATIONS CHKD		

Dr:\cadd\pnp041
L:\001\1306601\dr\w\sheet\5.d6\72829-sht1-DrainPnp028.dgn
3/16/2012