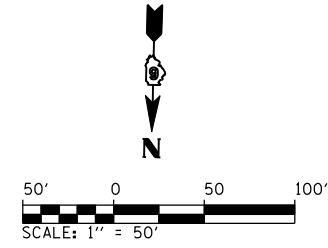
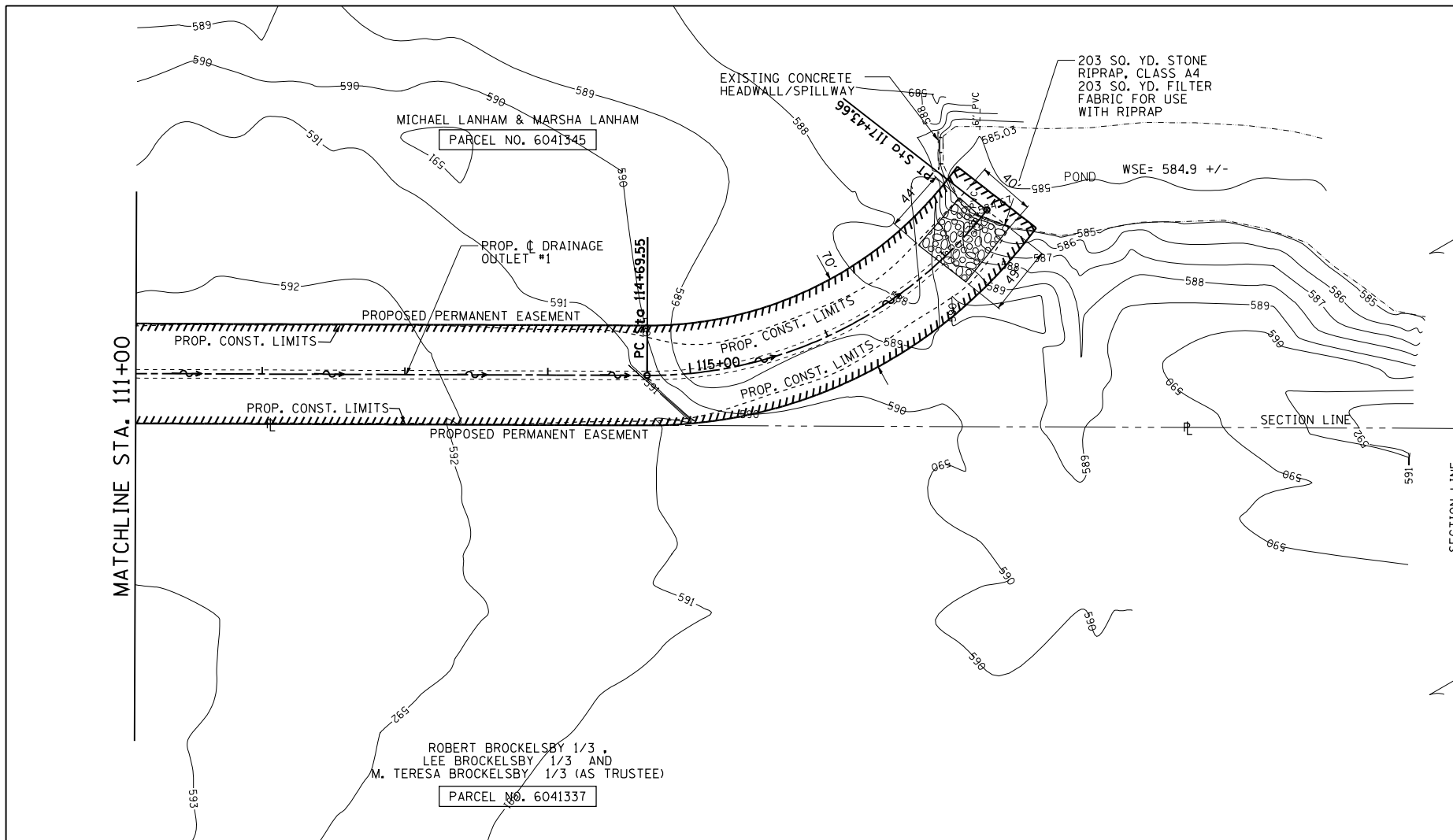


F.A.P. RTE.	SECTION	COUNTY	TOTAL SHEETS	SHEET NO.
75	84-12: 11-3	•	729	308
STA. 111+00		TO STA. 118+84.53		
FED. ROAD DIST. NO. 5 ILLINOIS FED. AID PROJECT				
• SANGAMON AND CHRISTIAN				

PLAN	SURVEYED	BY	DATE
	PLOTTED		
	CHECKED		
	BY		
	NO. OF WAY CHECKED		
	NO.		
	FILE NAME		

PROFILE	SURVEYED	BY	DATE
	PLOTTED		
	CHECKED		
	BY		
	NO. OF WAY CHECKED		
	NO.		
	STRUCTURE		
	NOTATIONS		
	CHFD		

DrainagePlan050  
L:\001\1306600\Draw\sheet.s\672829-sh1-DrainPlan028.dgn  
3/16/2012



NOTE: EXISTING FIELD TILE HAS BEEN REPORTED AND IS SUSPECTED TO EXIST WITHIN THE PROPOSED ROADWAY IMPROVEMENT LIMITS. THE LOCATIONS OF EXISTING FIELD TILE SHOWN ARE APPROXIMATE AND ADDITIONAL FIELD TILE MAY BE ENCOUNTERED. ESTIMATED QUANTITIES HAVE BEEN INCLUDED IN THE PLANS IN ORDER TO IDENTIFY AND RELOCATE EXISTING FIELD TILE IN ACCORDANCE WITH THE DETAILS HEREIN.

