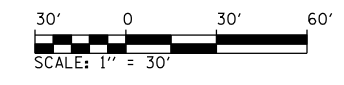
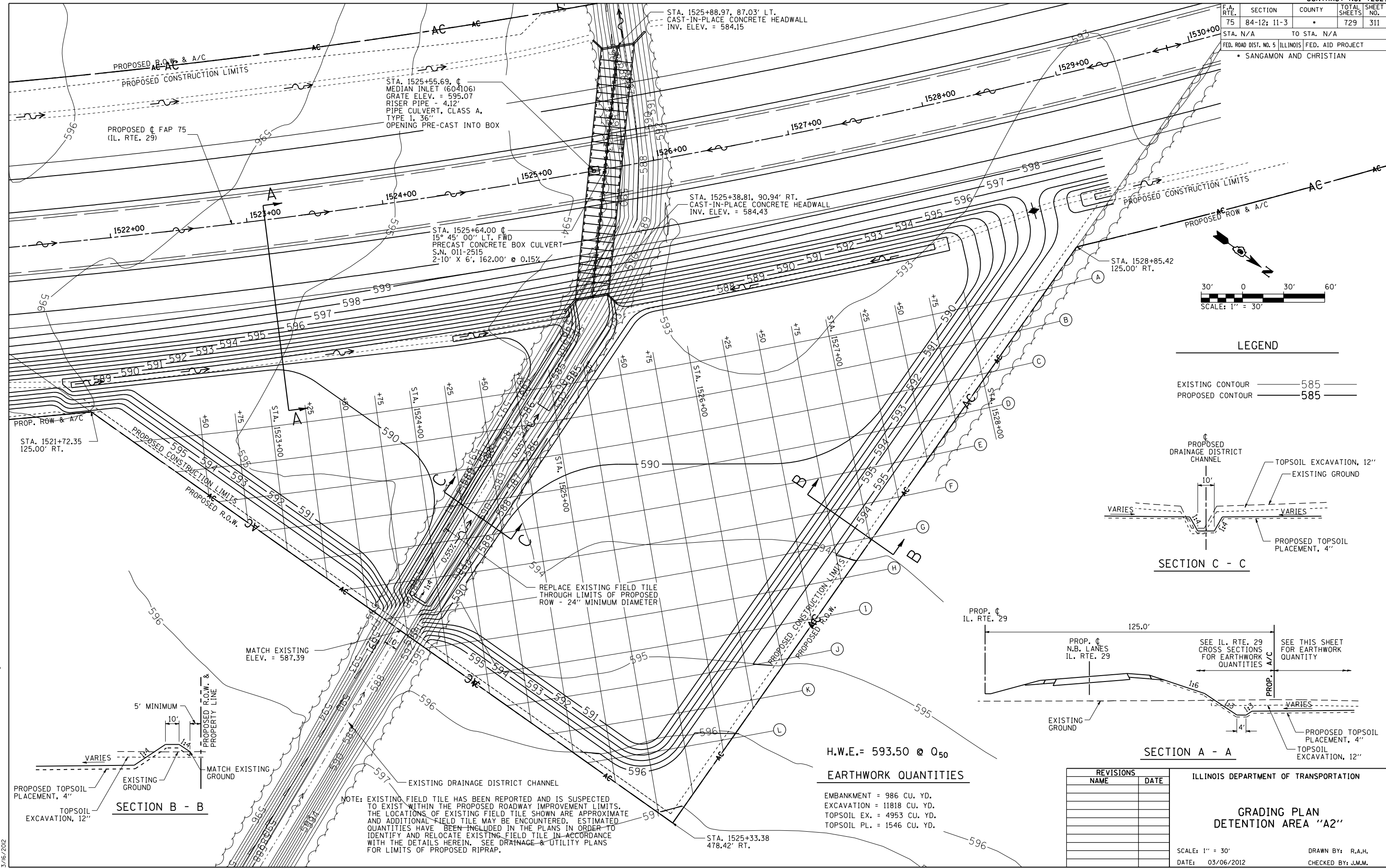
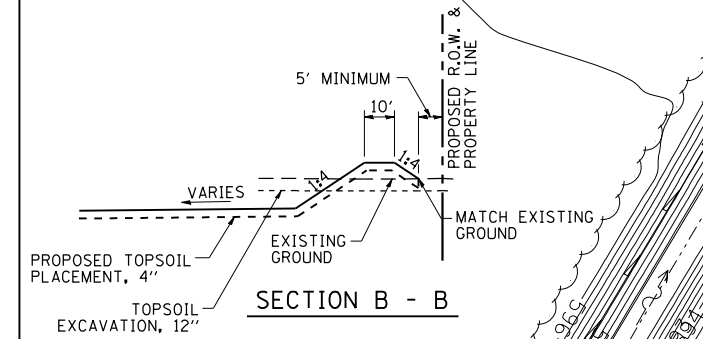
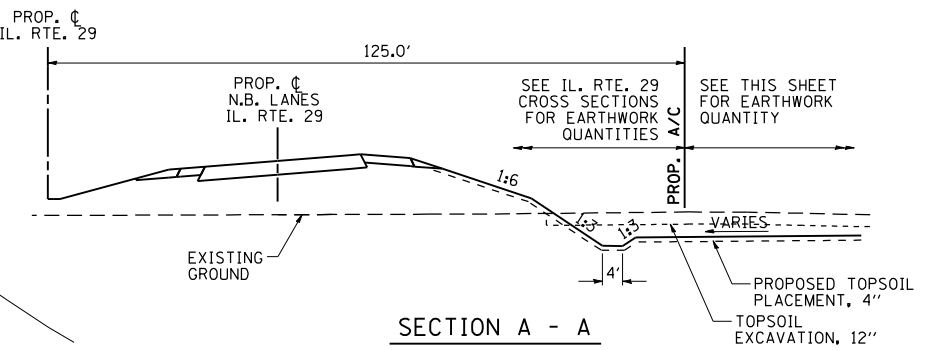
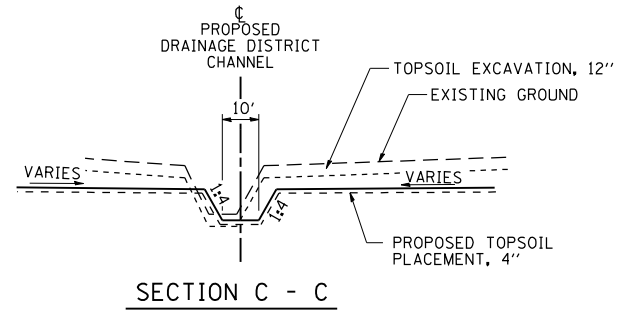


F.A. RTE.	SECTION	COUNTY	TOTAL SHEETS	SHEET NO.
75	84-12: 11-3		729	311
STA. N/A		TO STA. N/A		
FED. ROAD DIST. NO. 5 ILLINOIS FED. AID PROJECT				
• SANGAMON AND CHRISTIAN				



LEGEND

EXISTING CONTOUR	—— 585 ——
PROPOSED CONTOUR	—— 585 ——



NOTE: EXISTING FIELD TILE HAS BEEN REPORTED AND IS SUSPECTED TO EXIST WITHIN THE PROPOSED ROADWAY IMPROVEMENT LIMITS. THE LOCATIONS OF EXISTING FIELD TILE SHOWN ARE APPROXIMATE AND ADDITIONAL FIELD TILE MAY BE ENCOUNTERED. ESTIMATED QUANTITIES HAVE BEEN INCLUDED IN THE PLANS IN ORDER TO IDENTIFY AND RELOCATE EXISTING FIELD TILE IN ACCORDANCE WITH THE DETAILS HEREIN. SEE DRAINAGE & UTILITY PLANS FOR LIMITS OF PROPOSED RIPRAP.

H.W.E. = 593.50 @ 0.50

EARTHWORK QUANTITIES

EMBANKMENT = 986 CU. YD.
 EXCAVATION = 11818 CU. YD.
 TOPSOIL EX. = 4953 CU. YD.
 TOPSOIL PL. = 1546 CU. YD.

REVISIONS	
NAME	DATE

ILLINOIS DEPARTMENT OF TRANSPORTATION

**GRADING PLAN
 DETENTION AREA "A2"**

SCALE: 1" = 30'
 DATE: 03/06/2012
 DRAWN BY: R.A.H.
 CHECKED BY: J.M.M.

Default L:\DOT\030601\Draw\Sheets\030601\Draw\72829-snt-DrainPond_A2-1.dgn
 3/6/2012