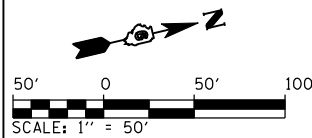


F.A. RTE.	SECTION	COUNTY	TOTAL SHEETS	SHEET NO.
75	84-12; 11-3	•	729	324
STA. 1533+50		TO STA. 1543+00		
FED. ROAD DIST. NO.		ILLINOIS FED. AID PROJECT		
• SANGAMON AND CHRISTIAN				



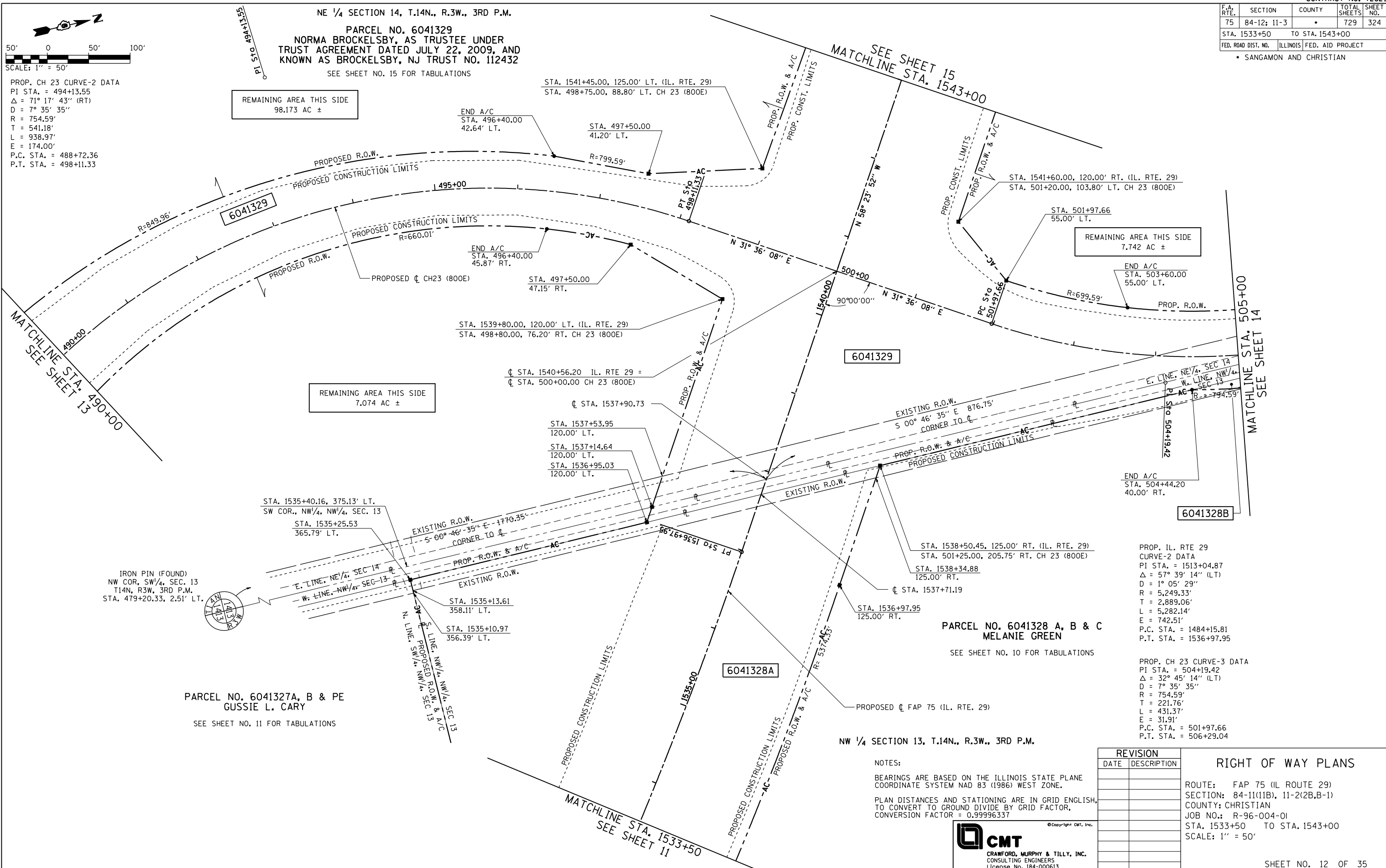
PROP. CH 23 CURVE-2 DATA  
 PI STA. = 494+13.55  
 $\Delta = 71^\circ 17' 43''$  (RT)  
 $D = 7^\circ 35' 35''$   
 $R = 754.59'$   
 $T = 541.18'$   
 $L = 938.97'$   
 $E = 174.00'$   
 P.C. STA. = 488+72.36  
 P.T. STA. = 498+11.33

NE 1/4 SECTION 14, T.14N., R.3W., 3RD P.M.  
**PARCEL NO. 6041329**  
 NORMA BROCKELSBY, AS TRUSTEE UNDER  
 TRUST AGREEMENT DATED JULY 22, 2009, AND  
 KNOWN AS BROCKELSBY, NJ TRUST NO. 112432  
 SEE SHEET NO. 15 FOR TABULATIONS

REMAINING AREA THIS SIDE  
 98.173 AC ±

REMAINING AREA THIS SIDE  
 7.074 AC ±

REMAINING AREA THIS SIDE  
 7.742 AC ±



IRON PIN (FOUND)  
 NW COR., SW 1/4, SEC. 13  
 T.14N., R.3W., 3RD P.M.  
 STA. 479+20.33, 2.51' LT.

**PARCEL NO. 6041327A, B & PE**  
 GUSSIE L. CARY  
 SEE SHEET NO. 11 FOR TABULATIONS

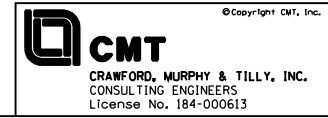
**PARCEL NO. 6041328 A, B & C**  
 MELANIE GREEN  
 SEE SHEET NO. 10 FOR TABULATIONS

PROP. IL. RTE 29  
 CURVE-2 DATA  
 PI STA. = 1513+04.87  
 $\Delta = 57^\circ 39' 14''$  (LT)  
 $D = 1^\circ 05' 29''$   
 $R = 5,249.33'$   
 $T = 2,889.06'$   
 $L = 5,282.14'$   
 $E = 742.51'$   
 P.C. STA. = 1484+15.81  
 P.T. STA. = 1536+97.95

PROP. CH 23 CURVE-3 DATA  
 PI STA. = 504+19.42  
 $\Delta = 32^\circ 45' 14''$  (LT)  
 $D = 7^\circ 35' 35''$   
 $R = 754.59'$   
 $T = 221.76'$   
 $L = 431.37'$   
 $E = 31.91'$   
 P.C. STA. = 501+97.66  
 P.T. STA. = 506+29.04

NOTES:  
 BEARINGS ARE BASED ON THE ILLINOIS STATE PLANE  
 COORDINATE SYSTEM NAD 83 (1986) WEST ZONE.  
 PLAN DISTANCES AND STATIONING ARE IN GRID ENGLISH,  
 TO CONVERT TO GROUND DIVIDE BY GRID FACTOR,  
 CONVERSION FACTOR = 0.99996337

REVISION		RIGHT OF WAY PLANS
DATE	DESCRIPTION	
		ROUTE: FAP 75 (IL ROUTE 29)
		SECTION: 84-11(11B), 11-2(2B,B-1)
		COUNTY: CHRISTIAN
		JOB NO.: R-96-004-01
		STA. 1533+50 TO STA. 1543+00
		SCALE: 1" = 50'



L:\DOT\0306601\Draw\Sheets\0672829-sht-ROWPLN\_012.dgn 3/16/2012