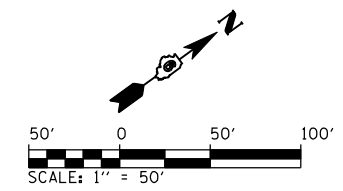


F.A. RTE.	SECTION	COUNTY	TOTAL SHEETS	SHEET NO.
75	84-12: 11-3		729	341
STA. 30+00		TO STA. 38+00		
FED. ROAD DIST. NO.		ILLINOIS FED. AID PROJECT		
• SANGAMON AND CHRISTIAN				



PROP. C TR321 - TR486  
 CURVE-2 DATA  
 PI STA. = 102+89.23  
 $\Delta$  = 53° 36' 33" (RT)  
 D = 18° 22' 59"  
 R = 311.68'  
 T = 157.47'  
 L = 291.62'  
 E = 37.52'  
 P.C. STA. = 101+31.76  
 P.T. STA. = 104+23.38

STONE (FOUND)  
 NW COR., SW/4, SECTION 4  
 T14N, R3W, 3RD P.M.

STONE (FOUND)  
 NE CORNER, FRACTIONAL NW/4,  
 SECTION 4, T14N, R3W, 3RD P.M.

PARCEL NO. 6041354B  
 CHARLYN K FARGO TRUSTEE  
 SEE SHEET NO. 30 FOR TABULATIONS

FRACT. NW/4 SECTION 4,  
 T.14N., R.3W., 3RD P.M.  
 PARCEL NO. 6041370 A & B  
 BETTY W. HARRYMAN  
 SEE SHEET NO. 30 FOR TABULATIONS

FRACTIONAL NW/4 SECTION 4,  
 T.14N., R.3W., 3RD P.M.

PARCEL NO. 6041352  
 BETTY W. HARRYMAN

TOTAL AREA = 73.129 ACRES ±  
 AREA REQUIRED = 0.256 ACRES ±  
 TOTAL REMAINING = 72.873 ACRES ±

SW/4 SECTION 4,  
 T.14N., R.3W., 3RD P.M.

FRACTIONAL NE 1/4 SECTION 4, T.14N., R.3W., 3RD P.M.

PARCEL NO. 6041353  
 JOYCE M. HINDS

TOTAL AREA = 155.111 ACRES ±  
 AREA REQUIRED = 1.197 ACRES ±  
 EXISTING R.O.W. = 0.408 ACRES ±  
 TOTAL AREA REQUIRED = 1.605 ACRES ±  
 TOTAL REMAINING = 153.506 ACRES ±

PARCEL NO. 6041351  
 DANE A. WACASER AND CAROL LYNN WACASER  
 AS JOINT TENANTS

SEE SHEET NO. 28 FOR TABULATIONS

PARCEL NO. 6041350 & 6041375  
 BETTE L. TUMIATI, AS TO AN  
 UNDIVIDED 1/3 INTEREST;  
 CAROLYN S. BUSBY, AS TRUSTEE  
 OF THE CAROLYN S. BUSBY TRUST,  
 AS TO AN UNDIVIDED 1/3 INTEREST;  
 MARCIA M. LITZ DECLARATION OF  
 TRUST, AS TO AN UNDIVIDED  
 1/3 INTEREST

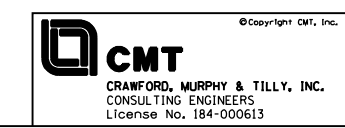
SEE SHEET NO. 27 FOR TABULATIONS

STONE (FOUND)  
 SE CORNER, SW/4, SECTION 4,  
 T14N, R3W, 3RD P.M.

NOTES:

- BEARINGS ARE BASED ON THE ILLINOIS STATE PLANE COORDINATE SYSTEM NAD 83 (1986) WEST ZONE.
- PLAN DISTANCES AND STATIONING ARE IN GRID ENGLISH. TO CONVERT TO GROUND DIVIDE BY GRID FACTOR, CONVERSION FACTOR = 0.99996337

REVISION		RIGHT OF WAY PLANS
DATE	DESCRIPTION	
		ROUTE: FAP 75 (IL ROUTE 29)
		SECTION: 84-11(11B), 11-2(2B,B-1)
		COUNTY: SANGAMON
		JOB NO.: R-96-004-01
		STA. 30+00 TO STA. 38+00
		SCALE: 1" = 50'



L:\DOT\030601\Draw\Sheets\030601\Draw\72829-sht-R0WPLN\_029.dgn 3/16/2012