

F.A. RTE.	SECTION	COUNTY	TOTAL SHEETS	SHEET NO.
75	84-12; 11-3	•	729	344

STA. 68+00 TO STA. 75+00  
ILLINOIS FED. AID PROJECT

• SANGAMON AND CHRISTIAN

SE 1/4 SECTION 32, T.15N., R.3W., 3RD P.M.

PARCEL NO. 6041356  
JAMES W. AYERS

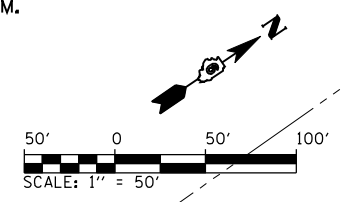
SEE SHEET NO. 31 FOR TABULATIONS

PARCEL NO. 6041361 A & B  
JAMES W. AYERS

SEE SHEET NO. 34 FOR TABULATIONS

PARCEL NO. 6041373  
JAMES W. AYERS

SEE SHEET NO. 31 FOR TABULATIONS



PARCEL NO. 6041362  
JACQUELYN L. RAMSEY

TOTAL AREA	=	36.070	ACRES ±
AREA REQUIRED	=	0.015	ACRES ±
EXISTING R.O.W.	=	0.107	ACRES ±
TOTAL AREA REQUIRED	=	0.122	ACRES ±
TOTAL REMAINING	=	35.948	ACRES ±

SW 1/4 SECTION 33, T.15N., R.3W., 3RD P.M.

STONE (FOUND)  
SE CORNER, SE 1/4, SECTION 32  
T.15N., R.3W., 3RD P.M.  
STA. 906+45.12, 0.26' RT

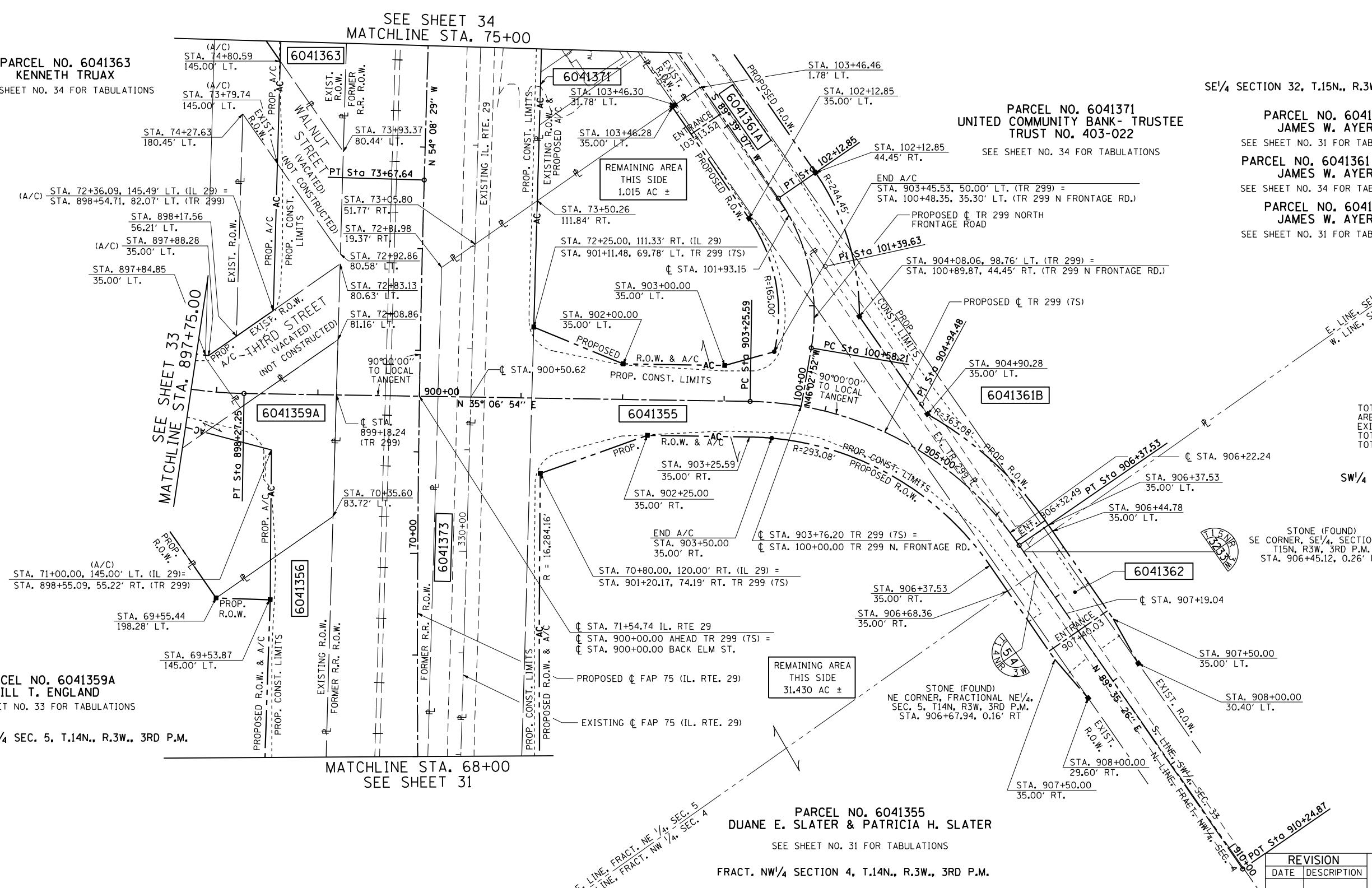
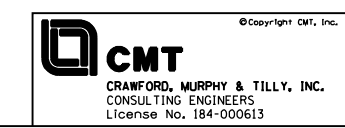
PROP. IL. RTE 29 CURVE-6 DATA PI STA. = 66+59.83 D = 4° 56' 51" (RT) Δ = 0° 20' 57" R = 16,404.16' T = 708.69' L = 1,416.50' E = 15.30' P.R.C. STA. = 59+51.14 P.T. STA. = 73+67.64	PROP. C TR. 299 CURVE-1 DATA PI STA. = 101+39.63 Δ = 44° 18' 02" (LT) D = 28° 38' 52" R = 200.00' T = 81.42' L = 154.64' E = 15.94' P.C. STA. = 100+58.21 P.T. STA. = 102+12.85
---	---

PROP. C TR. 299 CURVE-2 DATA PI STA. = 896+54.57 Δ = 54° 52' 52" (LT) D = 14° 33' 11" R = 393.70' T = 204.43' L = 377.11' E = 49.91' P.C. STA. = 894+50.14 P.T. STA. = 898+27.25	PROP. C TR. 299 CURVE-2 DATA PI STA. = 904+94.48 Δ = 54° 28' 32" (RT) D = 17° 27' 50" R = 328.08' T = 168.89' L = 311.93' E = 40.92' P.C. STA. = 903+25.59 P.T. STA. = 906+37.53
--	--

REVISION	
DATE	DESCRIPTION

RIGHT OF WAY PLANS

ROUTE: FAP 75 (IL ROUTE 29)  
SECTION: 84-11(11B), 11-2(2B,B-1)  
COUNTY: SANGAMON  
JOB NO.: R-96-004-01  
STA. 68+00 TO STA. 75+00  
SCALE: 1" = 50'



PARCEL NO. 6041363  
KENNETH TRUAX  
SEE SHEET NO. 34 FOR TABULATIONS

PARCEL NO. 6041371  
UNITED COMMUNITY BANK- TRUSTEE  
TRUST NO. 403-022  
SEE SHEET NO. 34 FOR TABULATIONS

PARCEL NO. 6041359A  
JILL T. ENGLAND  
SEE SHEET NO. 33 FOR TABULATIONS  
FRACT. NE 1/4 SEC. 5, T.14N., R.3W., 3RD P.M.

PARCEL NO. 6041355  
DUANE E. SLATER & PATRICIA H. SLATER  
SEE SHEET NO. 31 FOR TABULATIONS  
FRACT. NW 1/4 SECTION 4, T.14N., R.3W., 3RD P.M.

NOTES:  
BEARING ARE BASE ON THE ILLINOIS STATE PLANE  
COORDINATE SYSTEM NAD 83 (1986) WEST ZONE.  
PLAT DISTANCES AND STATIONING ARE IN GRID ENGLISH.  
TO CONVERT TO GROUND DIVIDE BY GRID FACTOR,  
CONVERSION FACTOR = 0.99996337

L:\DOT\030660\Draw\Sheets\0672829-sht-R0W\LN\_032.dgn  
3/16/2012