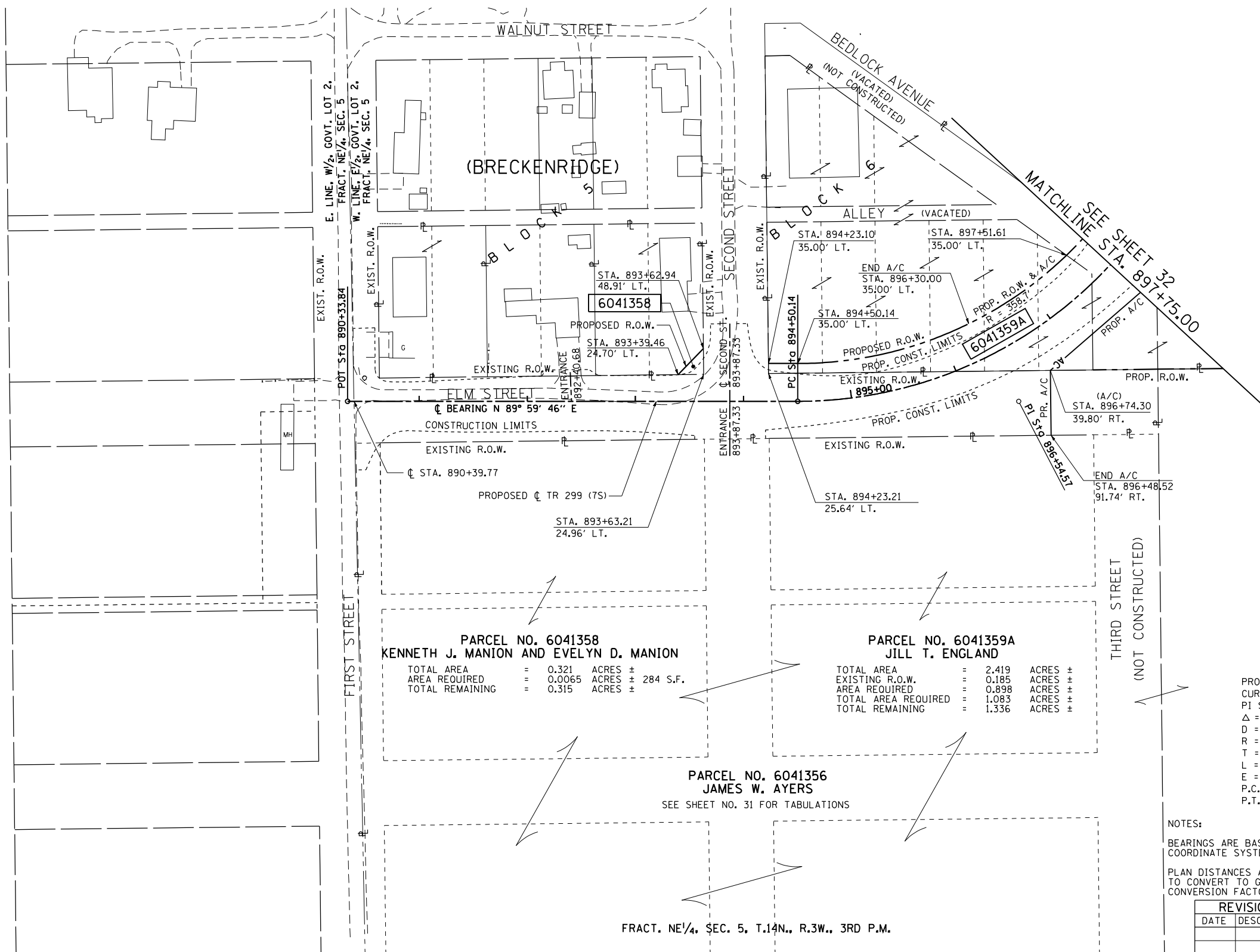
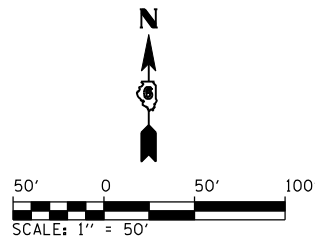


F.A. RTE.	SECTION	COUNTY	TOTAL SHEETS	SHEET NO.
75	84-12; 11-3	•	729	345
STA. 890+33.84 TO STA. 897+75.00				
FED. ROAD DIST. NO. ILLINOIS FED. AID PROJECT				

• SANGAMON AND CHRISTIAN



PARCEL NO. 6041358
KENNETH J. MANION AND EVELYN D. MANION
 TOTAL AREA = 0.321 ACRES ±
 AREA REQUIRED = 0.0065 ACRES ± 284 S.F.
 TOTAL REMAINING = 0.315 ACRES ±

PARCEL NO. 6041359A
JILL T. ENGLAND
 TOTAL AREA = 2.419 ACRES ±
 EXISTING R.O.W. = 0.185 ACRES ±
 AREA REQUIRED = 0.898 ACRES ±
 TOTAL AREA REQUIRED = 1.083 ACRES ±
 TOTAL REMAINING = 1.336 ACRES ±

PARCEL NO. 6041356
JAMES W. AYERS
 SEE SHEET NO. 31 FOR TABULATIONS

PROP. ϕ TR 299
 CURVE-I DATA
 PI STA. = 896+54.57
 Δ = 54° 52' 52" (LT)
 D = 14° 33' 11"
 R = 393.70'
 T = 204.43'
 L = 377.11'
 E = 49.91'
 P.C. STA. = 894+50.14
 P.T. STA. = 898+27.25

NOTES:
 BEARINGS ARE BASED ON THE ILLINOIS STATE PLANE COORDINATE SYSTEM NAD 83 (1986) WEST ZONE.
 PLAN DISTANCES AND STATIONING ARE IN GRID FEET, TO CONVERT TO GROUND DIVIDE BY GRID FACTOR, CONVERSION FACTOR = 0.99996337

REVISION		RIGHT OF WAY PLANS
DATE	DESCRIPTION	
		ROUTE: FAP 75 (IL ROUTE 29)
		SECTION: 84-11(11B), 11-2(2B,B-1)
		COUNTY: SANGAMON
		JOB NO.: R-96-004-01
		STA. 890+33.84 TO STA. 897+75.00
		SCALE: 1" = 50'



L:\DOT\030660\draw\sheet\030660\030660.dwg 3/16/2012