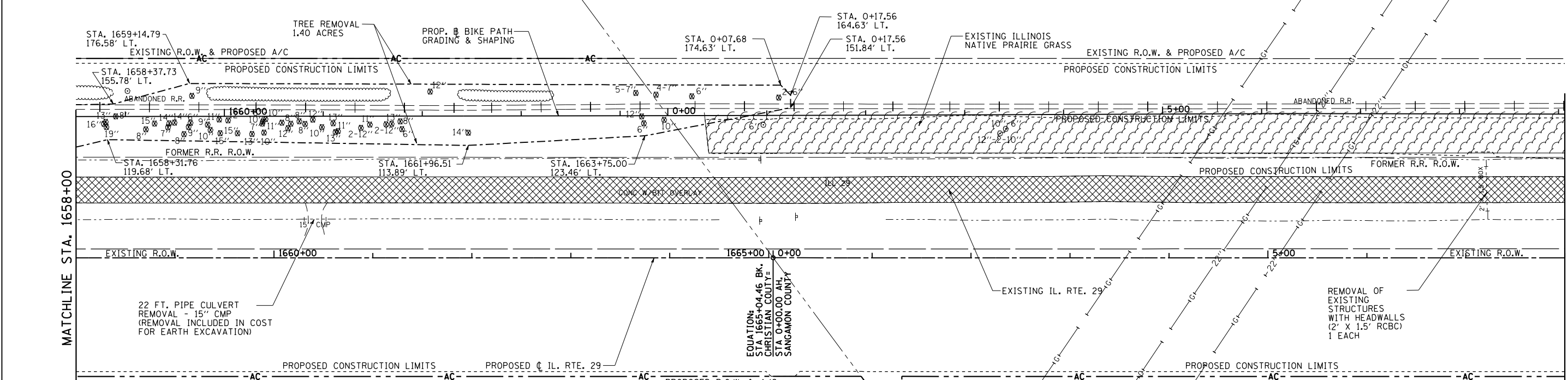
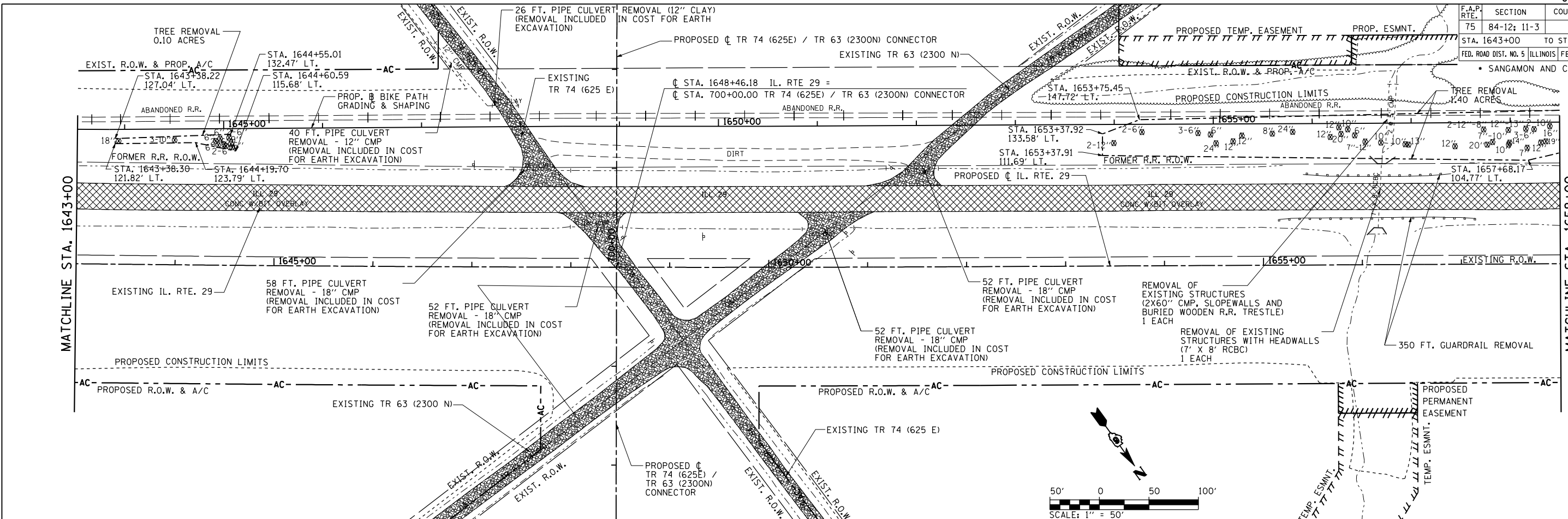


F.A.P. RTE.	SECTION	COUNTY	TOTAL SHEETS	SHEET NO.
75	84-12; 11-3		729	381
STA. 1643+00		TO STA. 8+00		
FED. ROAD DIST. NO. 5 ILLINOIS FED. AID PROJECT				
SANGAMON AND CHRISTIAN				



**REMOVAL LEGEND**

	ILLINOIS NATIVE PRARIE GRASS		EXISTING OIL & CHIP PAVEMENT TO BE REMOVED. COST INCLUDED IN EARTH EXCAVATION.
	PAVEMENT REMOVAL		GRAVEL DRIVEWAY REMOVAL. COST INCLUDED IN EARTH EXCAVATION.
	PAVEMENT BREAKING IN ACCORDANCE WITH ARTICLE 205.03. COST INCLUDED IN EMBANKMENT.		PAVED SHOULDER REMOVAL
	TREE REMOVAL ACRES		HMA SURFACE REMOVAL
	TREE REMOVAL (UNITS)		

**REVISIONS**

NAME	DATE

ILLINOIS DEPARTMENT OF TRANSPORTATION

**REMOVAL PLAN**  
IL. RTE 29

SCALE: 1" = 50'

DATE: 03/06/2012

DRAWN BY: R.A.H.  
CHECKED BY: J.M.M.

Default: L:\DOT\030601\Drawings\Sheets\0672829-sht-REM-009.dgn 4/24/2012