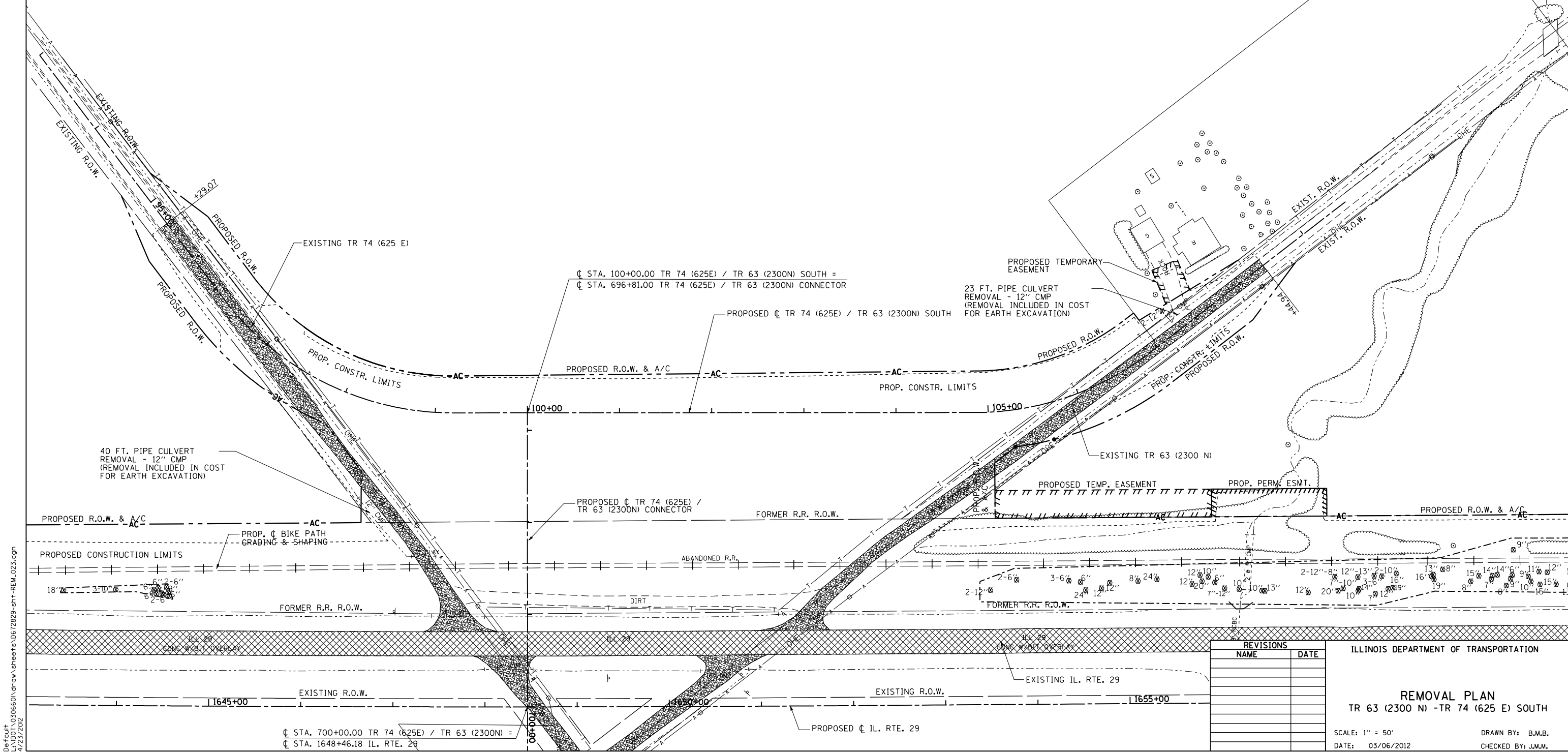
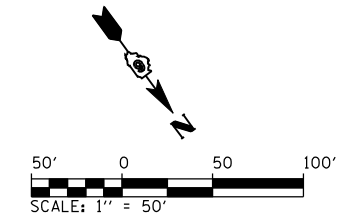


F.A. RTE.	SECTION	COUNTY	TOTAL SHEETS	SHEET NO.
75	84-12: 11-3	•	729	397
STA. 95+29.07		TO STA. 108+44.94		
FED. ROAD DIST. NO. 5 ILLINOIS FED. AID PROJECT				
• SANGAMON AND CHRISTIAN				

**REMOVAL LEGEND**

- ILLINOIS NATIVE PRARIE GRASS
- PAVEMENT REMOVAL
- PAVEMENT BREAKING IN ACCORDANCE WITH ARTICLE 205.03. COST INCLUDED IN EMBANKMENT.
- TREE REMOVAL ACRES
- TREE REMOVAL (UNITS)
- EXISTING OIL & CHIP PAVEMENT TO BE REMOVED. COST INCLUDED IN EARTH EXCAVATION
- GRAVEL DRIVEWAY REMOVAL. COST INCLUDED IN EARTH EXCAVATION.
- PAVED SHOULDER REMOVAL
- HMA SURFACE REMOVAL



REVISIONS	
NAME	DATE

ILLINOIS DEPARTMENT OF TRANSPORTATION

**REMOVAL PLAN**  
TR 63 (2300 N) -TR 74 (625 E) SOUTH

SCALE: 1" = 50'  
DATE: 03/06/2012

DRAWN BY: B.M.B.  
CHECKED BY: J.M.M.

Default L:\DOT\030601\Draw\Sheets\0672829-sht-REM\_023.dgn 4/23/2012