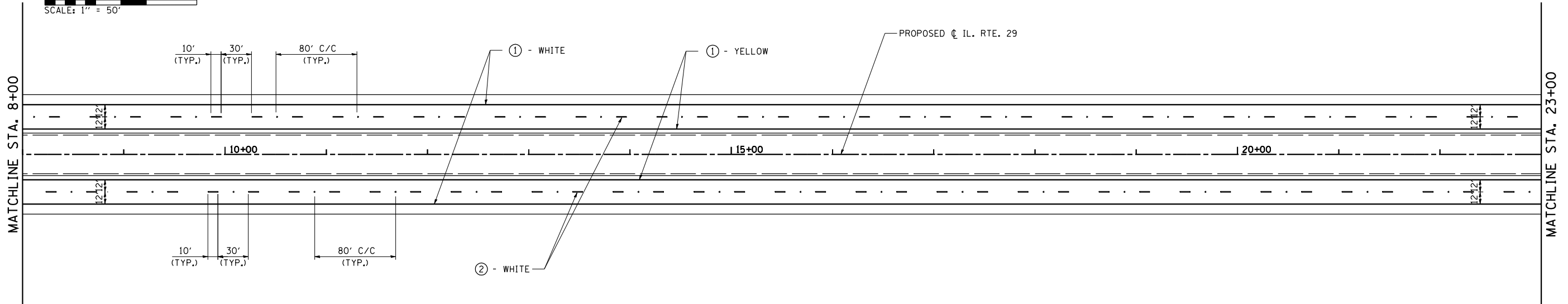
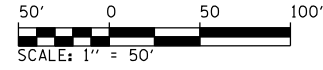
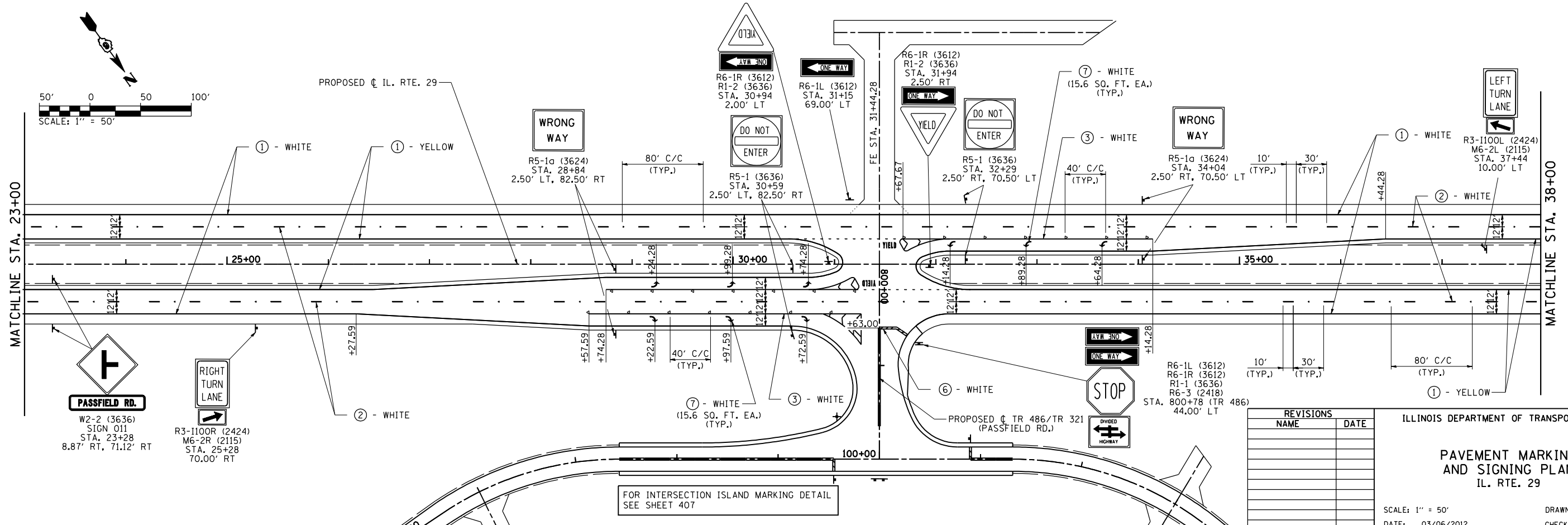
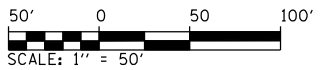


F.A.P. RTE.	SECTION	COUNTY	TOTAL SHEETS	SHEET NO.
75	84-12: 11-3		729	417
STA. 8+00		TO STA. 38+00		
FED. ROAD DIST. NO. 5 ILLINOIS FED. AID PROJECT				
• SANGAMON AND CHRISTIAN				



LEGEND

- ① GROOVED IN URETHANE PAVEMENT MARKING - LINE 5"
- ② PREFORMED PLASTIC PAVEMENT MARKING, TYPE B - INLAID - LINE 5"
- ③ PREFORMED PLASTIC PAVEMENT MARKING, TYPE B - INLAID - LINE 6"
- ④ PREFORMED PLASTIC PAVEMENT MARKING, TYPE B - INLAID - LINE 8"
- ⑤ PREFORMED PLASTIC PAVEMENT MARKING, TYPE B - INLAID - LINE 12"
- ⑥ PREFORMED PLASTIC PAVEMENT MARKING, TYPE B - INLAID - LINE 24"
- ⑦ PREFORMED PLASTIC PAVEMENT MARKING, TYPE B - INLAID - LETTERS & SYMBOLS
- ◄ RAISED REFLECTIVE PAVEMENT MARKER (ONE-WAY CRYSTAL)
- ◄ RAISED REFLECTIVE PAVEMENT MARKER (ONE-WAY AMBER)
- ◄ RAISED REFLECTIVE PAVEMENT MARKER (TWO-WAY AMBER)
- ⊥ PROPOSED SIGN PANEL AND POST
- ⊥ EXISTING SIGN PANEL AND POST



REVISIONS	
NAME	DATE

ILLINOIS DEPARTMENT OF TRANSPORTATION

PAVEMENT MARKING AND SIGNING PLAN
IL. RTE. 29

SCALE: 1" = 50'
DATE: 03/06/2012

DRAWN BY: B.M.B.
CHECKED BY: J.M.M.

Default: L:\D001\0306601\Draw\Sheets\0672829-sht-PMK_012.dgn 4/23/2012