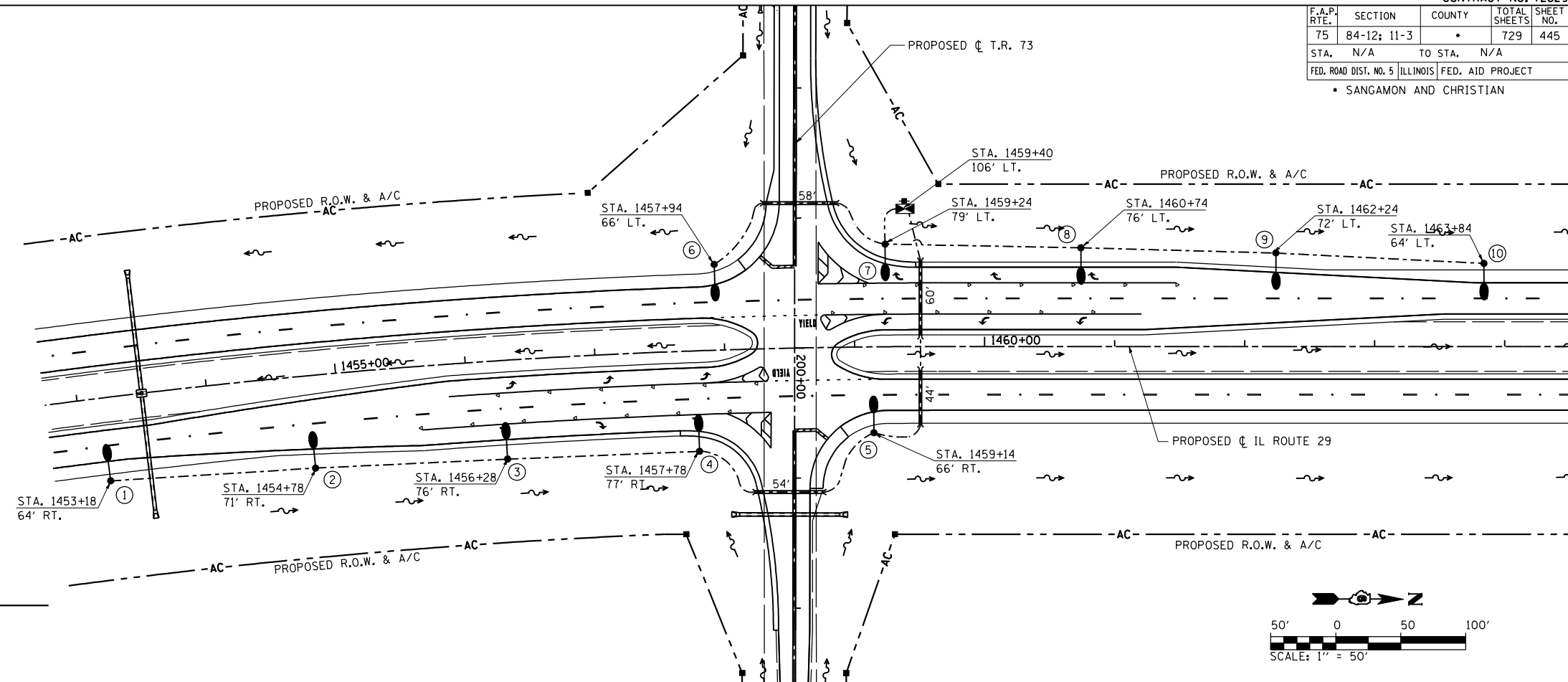
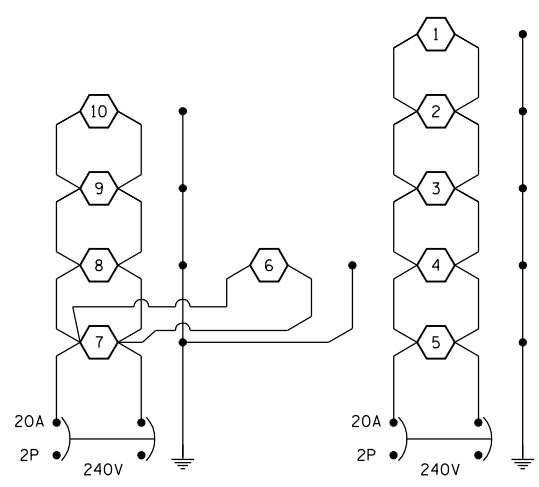
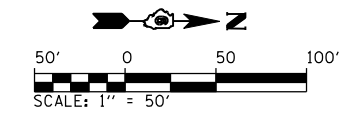
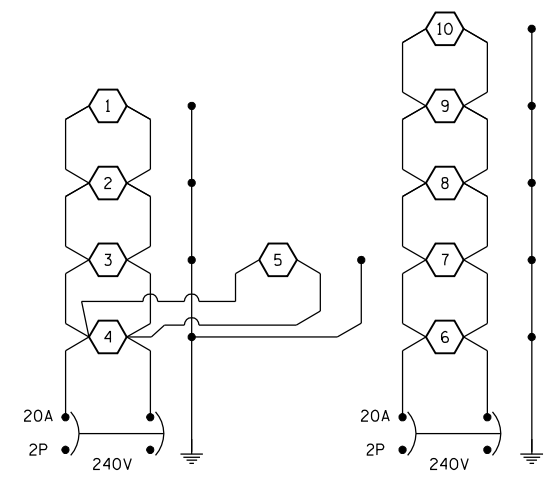
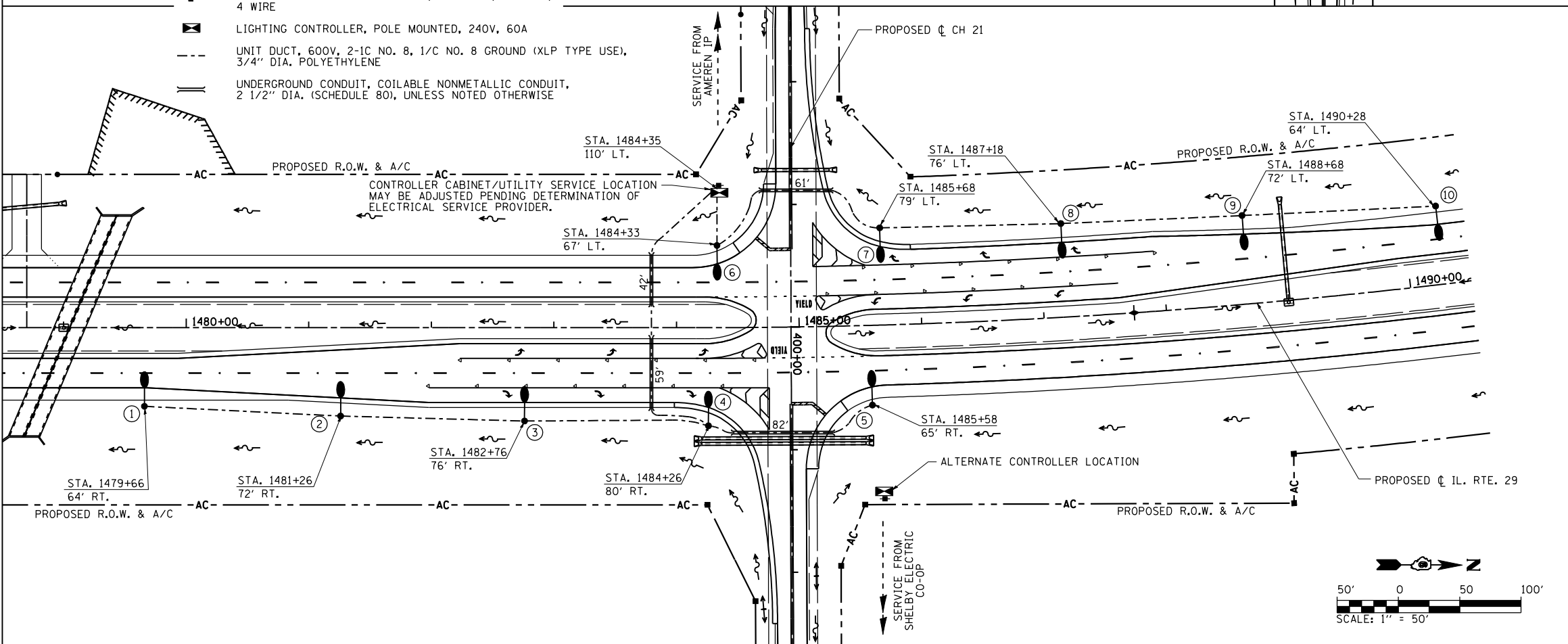
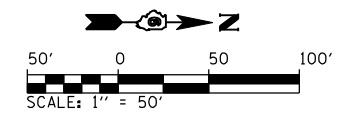


F.A.P. RTE.	SECTION	COUNTY	TOTAL SHEETS	SHEET NO.
75	84-12: 11-3		729	445
STA.	N/A	TO STA.	N/A	
FED. ROAD DIST. NO. 5 ILLINOIS FED. AID PROJECT				
• SANGAMON AND CHRISTIAN				



LEGEND

- LIGHT POLE, ALUMINUM, 45 FT. M.H., 15 FT. DAVIT ARM WITH LUMINAIRE, SODIUM VAPOR, HORIZONTAL MOUNT. 250 WATT, WITH BREAKAWAY COUPLINGS.
- ELECTRIC SERVICE INSTALLATION, 120/240V, 1 PHASE, 4 WIRE
- LIGHTING CONTROLLER, POLE MOUNTED, 240V, 60A
- UNIT DUCT, 600V, 2-1C NO. 8, 1/C NO. 8 GROUND (XLP TYPE USE), 3/4" DIA. POLYETHYLENE
- UNDERGROUND CONDUIT, COILABLE NONMETALLIC CONDUIT, 2 1/2" DIA. (SCHEDULE 80), UNLESS NOTED OTHERWISE



REVISIONS	
NAME	DATE

ILLINOIS DEPARTMENT OF TRANSPORTATION

LIGHTING PLAN
ILLINOIS RTE. 29 & TR 73
ILLINOIS RTE. 29 & CH 21

SCALE: 1" = 50'

DATE: 03/06/2012

DRAWN BY: IDOT
CHECKED BY: J.M.M.

Default \\dot\030660\Draw\Sheets\0672829-sht-LIGHT_PR_002.dgn 3/6/2012