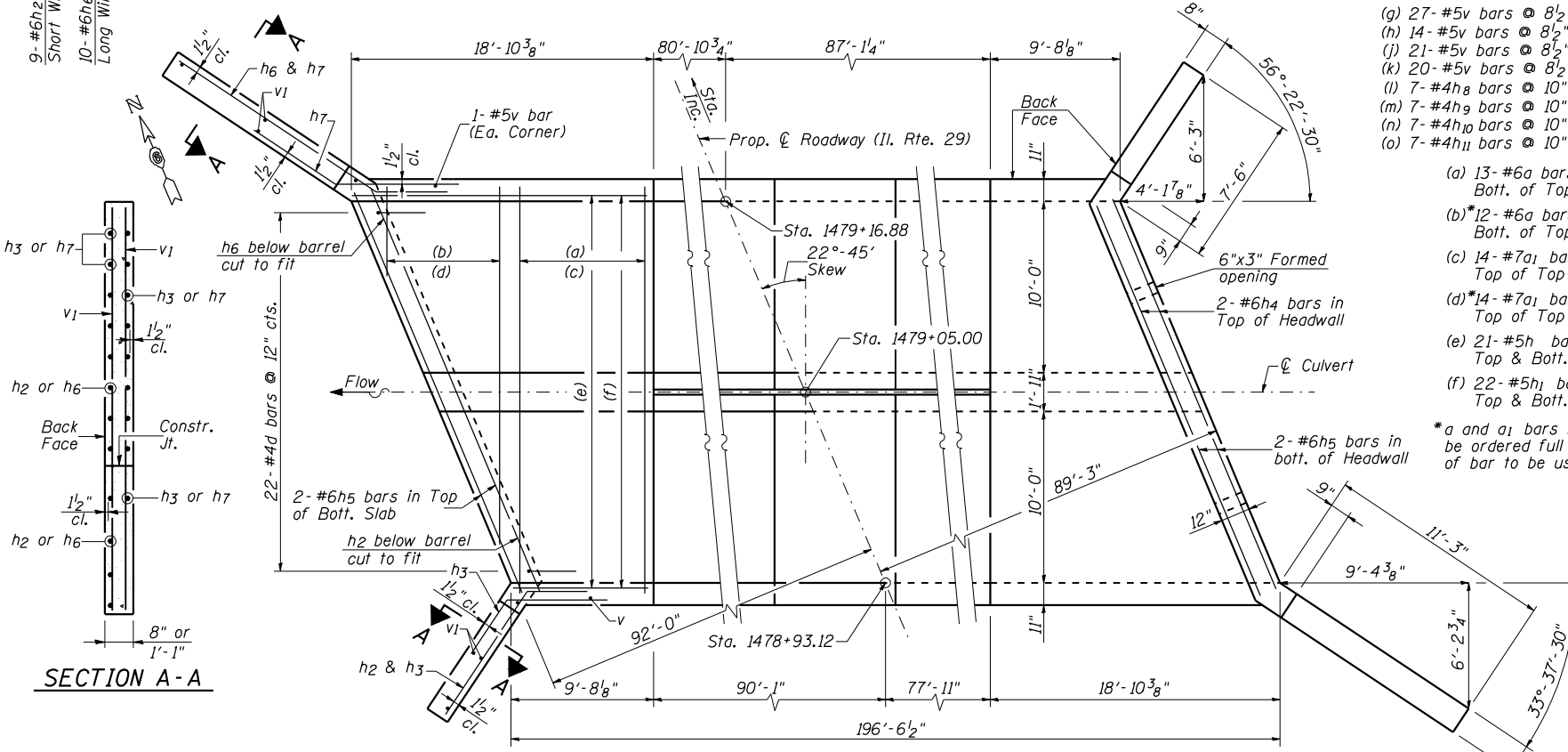
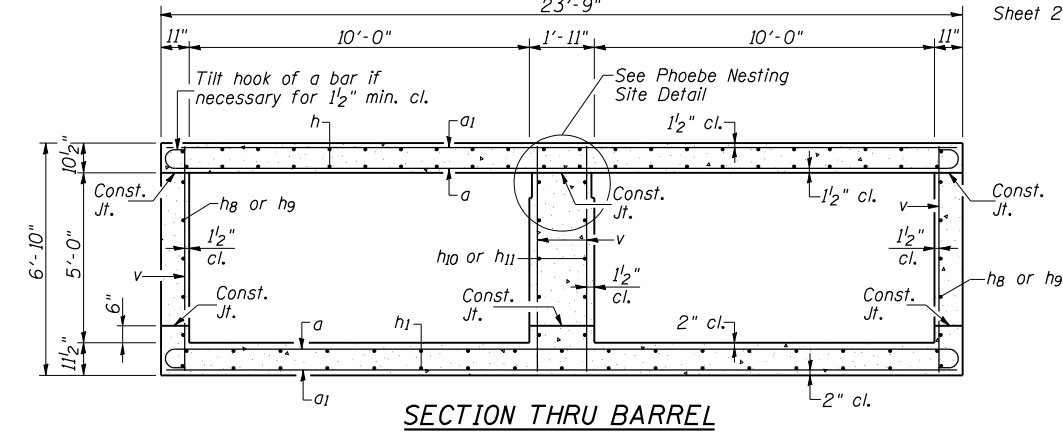
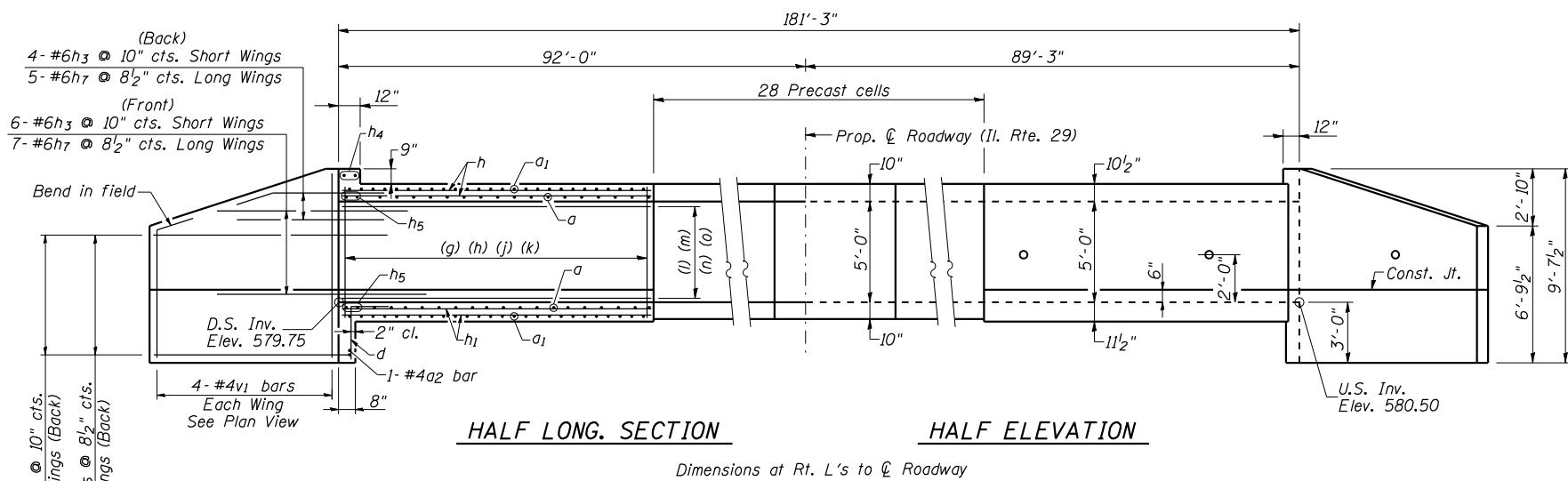
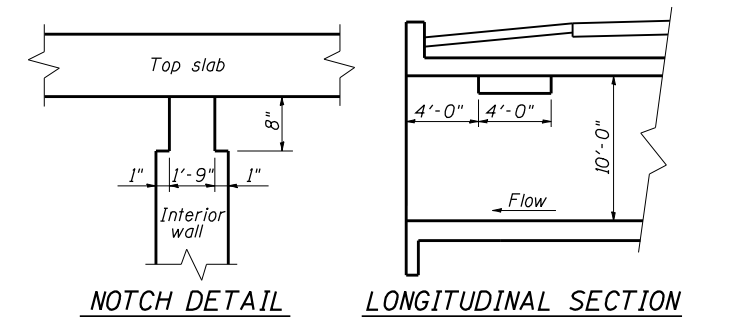


F.A. RTE.	SECTION	COUNTY	TOTAL SHEETS	SHEET NO.
75	84-12: 11-3		729	455
STA.		TO STA.		
FED. ROAD DIST. NO. 5 ILLINOIS FED. AID PROJECT				
SANGAMON AND CHRISTIAN				



- (g) 27- #5v bars @ 8 1/2" cts. Long Exterior Wall
 - (h) 14- #5v bars @ 8 1/2" cts. Short Exterior Wall
 - (j) 21- #5v bars @ 8 1/2" cts. Longer Face of Interior Wall
 - (k) 20- #5v bars @ 8 1/2" cts. Shorter Face of Interior Wall
 - (l) 7- #4h8 bars @ 10" cts. Long Exterior Wall
 - (m) 7- #4h9 bars @ 10" cts. Short Exterior Wall
 - (n) 7- #4h10 bars @ 10" cts. Longer Face of Interior Wall
 - (o) 7- #4h11 bars @ 10" cts. Shorter Face of Interior Wall
- (a) 13- #6a bars @ 9" cts. Bott. of Top Slab & Top of Bott. slab
 - (b)* 12- #6a bars @ 9" cts. Bott. of Top Slab & Top of Bott. slab
 - (c) 14- #7a1 bars @ 8" cts. Top of Top Slab & Bott. of Bott. slab
 - (d)* 14- #7a1 bars @ 8" cts. Top of Top Slab & Bott. of Bott. slab
 - (e) 21- #5h bars @ 1'-2" cts. Top & Bott. of Top Slab
 - (f) 22- #5h1 bars @ 1'-1" cts. Top & Bott. of Bott. Slab
- *a and a1 bars in skew portion of slab shall be ordered full length & cut to fit. Balance of bar to be used in opposite end of culvert.

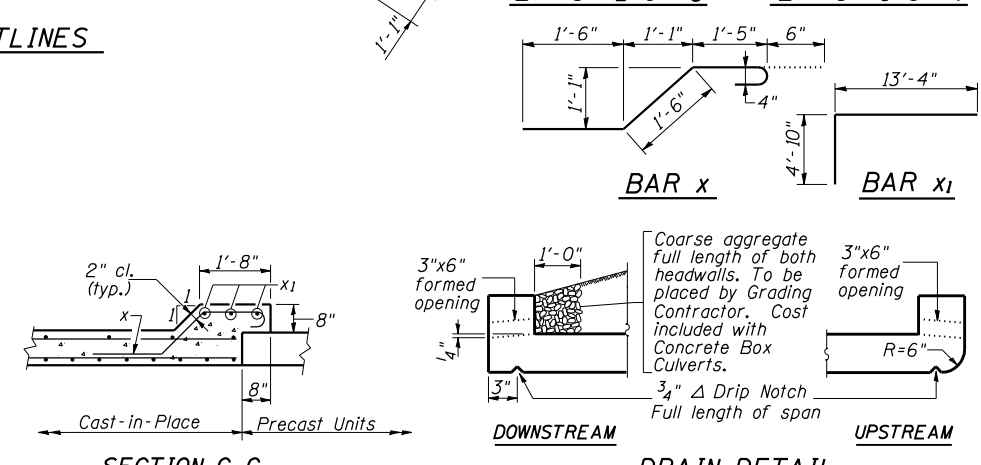
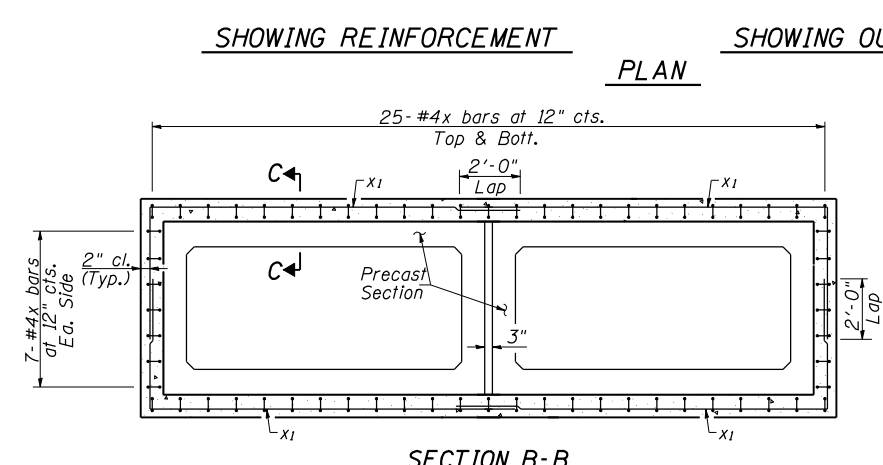
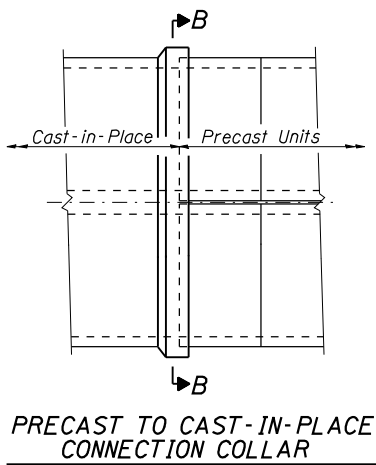


PHOEBE NESTING SITE DETAIL
 (Near Downstream End)

Note:
 Notch formed by rough-finished board attached to and removed with formwork.

BILL OF MATERIAL

Bar	No.	Size	Length	Shape
a	76	#6	24'-9"	
a1	84	#7	23'-5"	
a2	2	#4	24'-0"	
d	44	#4	4'-6"	
h	42	#5	27'-10"	
h1	44	#5	27'-10"	
h2	18	#6	10'-6"	
h3	20	#6	8'-0"	
h4	4	#6	24'-1"	
h5	8	#6	25'-3"	
h6	20	#6	14'-3"	
h7	24	#6	8'-0"	
h8	14	#4	18'-6"	
h9	14	#4	9'-4"	
h10	14	#4	14'-4"	
h11	14	#4	13'-6"	
v	168	#5	6'-6"	
v1	16	#4	9'-3"	
x	128	#4	4'-11"	
x1	24	#4	18'-2"	
Concrete Box Culverts		Cu. Yd.	86.4	
Reinforcement Bars		Pound	13,670	



REVISIONS	
NAME	DATE

ILLINOIS DEPARTMENT OF TRANSPORTATION

BOX CULVERT DETAILS
 PROPOSED STRUCTURE NO. 011-2514
 STA. 1479+05.00

SCALE: NONE DRAWN BY: GLD
 DATE: 03/06/2012 CHECKED BY: WLB