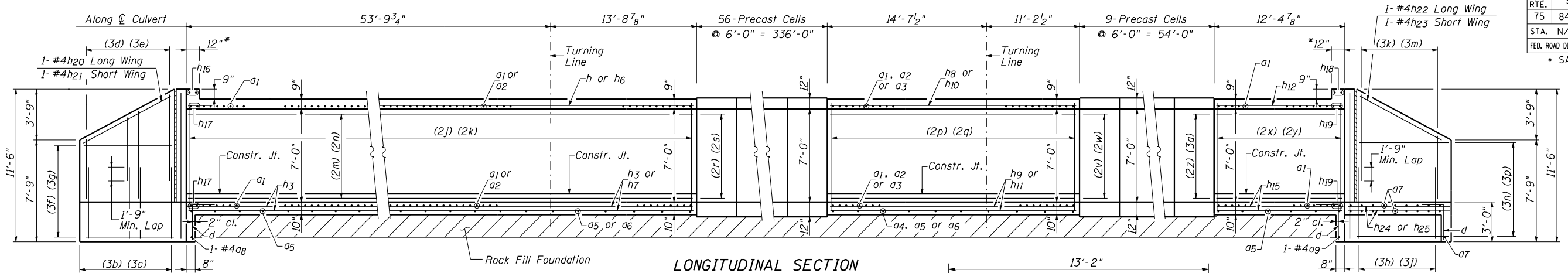
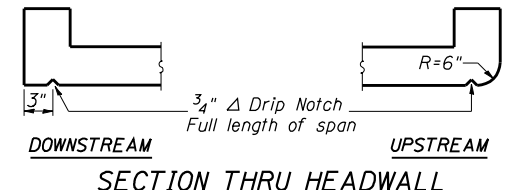


F.A. RTE.	SECTION	COUNTY	TOTAL SHEETS	SHEET NO.
75	84-12; 11-3		729	471
STA. N/A	TO STA. N/A			
FED. ROAD DIST. NO. 5 ILLINOIS FED. AID PROJECT				
• SANGAMON AND CHRISTIAN				
Sheet 2 of 4 Sheets				



**LONGITUDINAL SECTION**

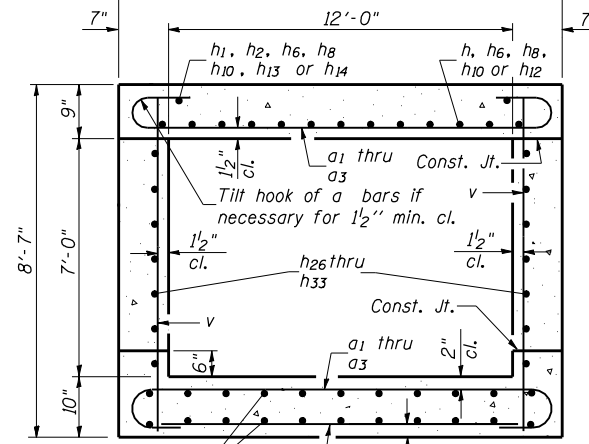
- (2j) 68-#5v bars @ 12" cts. Long Wall
- (2k) 67-#5v bars @ 12" cts. Short Wall
- (2m) 8x2-#4h26 bars @ 10" cts. Long Wall
- (2n) 8x2-#4h27 bars @ 10" cts. Short Wall
- (2p) 21-#5v bars @ 12" cts. Short Wall
- (2q) 31-#5v bars @ 12" cts. Long Wall
- (2r) 8-#4h28 bars @ 10" cts. Short Wall
- (2s) 8-#4h29 bars @ 10" cts. Long Wall
- (2v) 8-#4h30 bars @ 10" cts. Long Wall
- (2w) 8-#4h31 bars @ 10" cts. Short Wall
- (2x) 16-#5v bars @ 12" cts. Long Wall
- (2y) 9-#5v bars @ 12" cts. Short Wall
- (3a) 8-#4h32 bars @ 10" cts. Long Wall
- (3b) 23-#4v3 (E) bars @ 8" cts. Long Wing
- (3c) 13-#4v3 (E) bars @ 8" cts. Short Wing
- (3d) 11-#4v4 & 12-#4v5 bars @ 8" cts. Long Wing
- (3e) 6-#4v6 & 7-#4v7 bars @ 8" cts. Short Wing
- (3f) 8-#4h20 bars @ 12" cts. Long Wing
- (3g) 8-#4h21 bars @ 12" cts. Short Wing
- (3h) 24-#4v3 (E) bars @ 8" cts. Long Wing
- (3j) 13-#4v3 (E) bars @ 8" cts. Short Wing
- (3k) 12-#4v4 & 12-#4v5 bars @ 8" cts. Long Wing
- (3m) 6-#4v6 & 7-#4v7 bars @ 8" cts. Short Wing
- (3n) 8-#4h22 bars @ 12" cts. Long Wing
- (3p) 8-#4h23 bars @ 12" cts. Short Wall



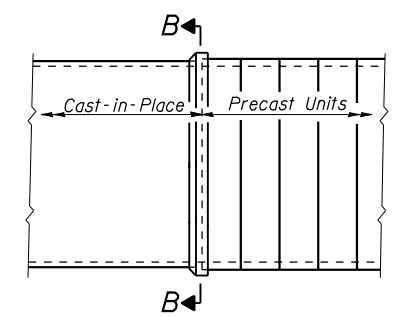
**SECTION THRU HEADWALL**

**MINIMUM BAR LAP**

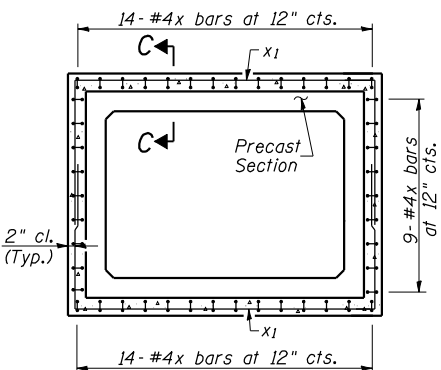
- #4 Bar = 1'-9"
- #5 Bar = 1'-9"
- #6 Bar = 2'-1"



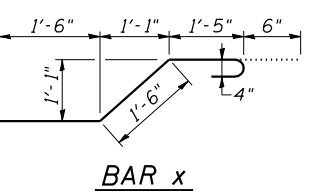
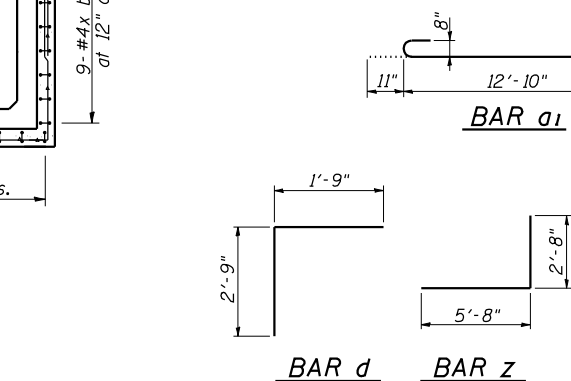
**SECTION THRU BARREL**



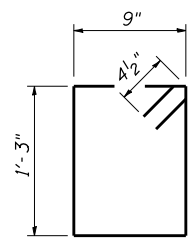
**PRECAST TO CAST-IN-PLACE CONNECTION COLLAR**



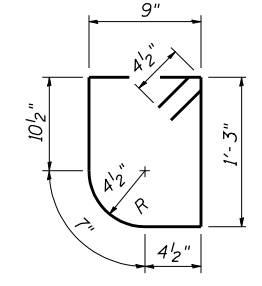
**SECTION B-B**



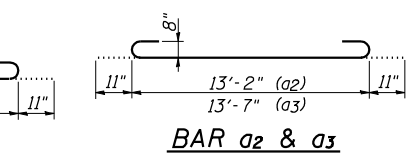
**BAR x**



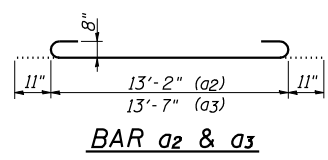
**BAR s**



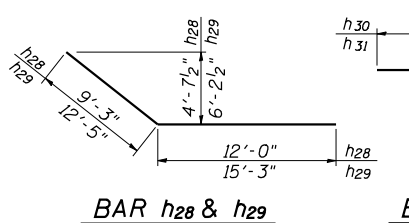
**BAR s1**



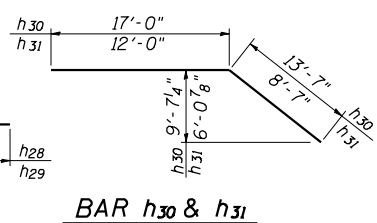
**BAR a1**



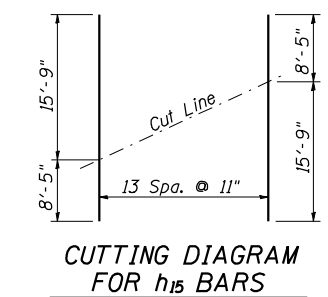
**BAR a2 & a3**



**BAR h28 & h29**



**BAR h30 & h31**



**CUTTING DIAGRAM FOR h15 BARS**

**BILL OF MATERIAL**

Bar	No.	Size	Length	Shape
a1	381	#8	14'-8"	
a2	30	#8	15'-0"	
a3	12	#8	15'-5"	
a4	1	#4	13'-7"	
a5	58	#4	12'-10"	
a6	3	#4	13'-2"	
a7	38	#5	17'-11"	
a8	1	#4	14'-0"	
a9	1	#4	14'-2"	
d	58	#4	4'-6"	
h	26	#6	30'-9"	
h1	2	#6	27'-0"	
h2	2	#6	30'-9"	
h3	28	#6	30'-9"	
h6	15	#6	15'-3"	
h7	28	#6	15'-3"	
h8	15	#6	17'-0"	
h9	28	#6	17'-0"	
h10	15	#6	13'-7"	
h11	28	#6	13'-7"	
h12	13	#6	15'-9"	
h13	1	#6	15'-9"	
h14	1	#6	8'-5"	
h15	14	#6	24'-2"	
h16	2	#6	14'-2"	
h17	4	#8	14'-2"	
h18	2	#6	14'-5"	
h19	4	#8	14'-5"	
h20	12	#4	14'-11"	
h21	12	#4	8'-5"	
h22	12	#4	15'-8"	
h23	12	#4	8'-2"	
h24	48	#5	9'-9"	
h25	10	#5	8'-9"	
h26	16	#4	24'-11"	
h27	16	#4	21'-6"	
h28	8	#4	21'-3"	
h29	8	#4	27'-8"	
h30	8	#4	30'-7"	
h31	8	#4	20'-7"	
h32	8	#4	15'-5"	
h33	8	#4	8'-9"	
h34	8	#5	5'-6"	
h35	8	#5	7'-0"	
h36	16	#5	5'-0"	
s	15	#4	4'-9"	
s1	15	#4	4'-7"	
v	212	#5	8'-3"	
v1	8	#4	8'-3"	
v3(E)	73	#4	4'-9"	
v4	23	#4	6'-5"	
v5	24	#4	8'-5"	
v6	12	#4	6'-3"	
v7	14	#4	8'-3"	
v8	4	#5	5'-6"	
v9	4	#5	7'-0"	
v10	8	#5	5'-0"	
w	7	#5	28'-6"	
w1	7	#5	15'-3"	
w2	7	#5	29'-7"	
w3	7	#5	14'-11"	
w4	1	#5	10'-2"	
w5	1	#5	11'-1"	
x	184	#4	4'-11"	
x1	24	#4	26'-10"	
z	96	#7	8'-4"	
z1	9	#7	4'-7"	
z2	8	#7	6'-6"	
Concrete Box Culverts		Cu. Yd.	159.7	
Reinforcement Bars, Epoxy Coated		Pound	230	
Reinforcement Bars		Pound	33,170	

REVISIONS	
NAME	DATE

ILLINOIS DEPARTMENT OF TRANSPORTATION

**BOX CULVERT SECTIONS AND DETAILS**

PROPOSED STRUCTURE NO. 011-7052  
STA. 483+34.34

SCALE: NONE  
DATE: 03/06/2012

DRAWN BY: GLD  
CHECKED BY: WLW