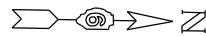


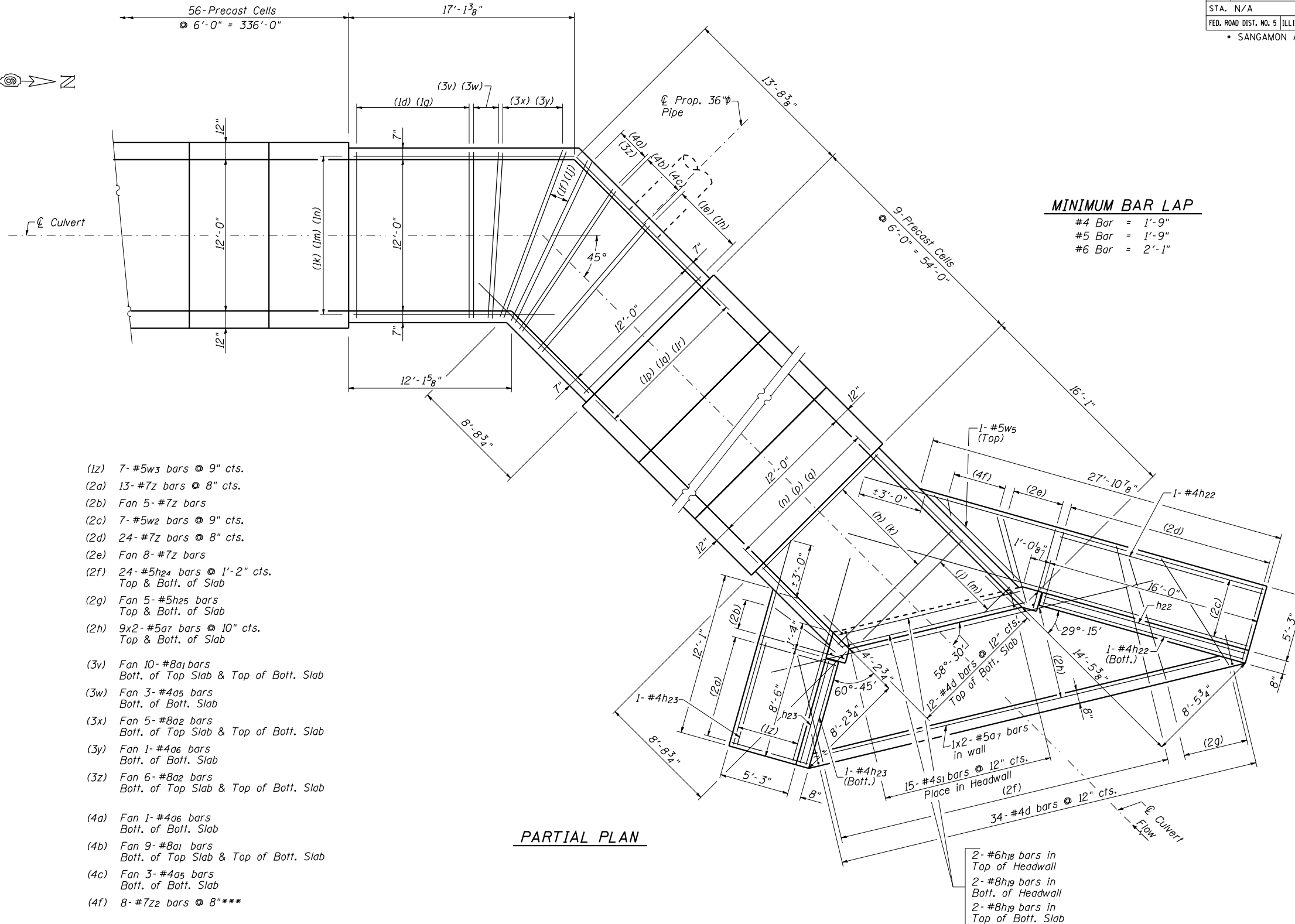
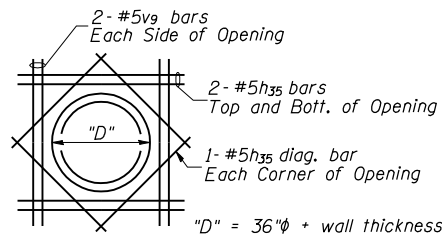
F.A. RTE.	SECTION	COUNTY	TOTAL SHEETS	SHEET NO.
75	84-12; 11-3		729	473
STA. N/A		TO STA. N/A		
FED. ROAD DIST. NO. 5 ILLINOIS FED. AID PROJECT				
• SANGAMON AND CHRISTIAN				



MINIMUM BAR LAP

- #4 Bar = 1'-9"
- #5 Bar = 1'-9"
- #6 Bar = 2'-1"

ADDITIONAL REINF. FOR 36"φ PIPE OPENING



PARTIAL PLAN

- (1d) 14- #8a1 bars @ 6 1/2" cts. Bott. of Top Slab & Top of Bott. slab
- (1e) 8- #8a1 bars @ 6 1/2" cts. Bott. of Top Slab & Top of Bott. slab
- (1f) Fan 6- #8a3 bars Bott. of Top Slab & Top of Bott. Slab
- (1g) 4- #4a5 bars @ 2'-0" cts. Bott. of Bott. slab
- (1h) 3- #4a5 bars @ 2'-0" cts. Bott. of Bott. Slab
- (1j) Fan 1- #4a4 bars Bott. of Bott. Slab
- (1k) 2- #6h8 bars Top of Top Slab (Place as shown in cross section)
- (1m) 13- #6h8 bars @ 12" cts. Bott. of Top Slab
- (1n) 14- #6h9 bars @ 11" cts. Top & Bott. of Bott. Slab
- (1p) 2- #6h10 bars Top of Top slab (Place as shown in cross section)
- (1q) 13- #6h10 bars @ 12" cts. Bott. of Top Slab
- (1r) 14- #6h11 bars @ 11" cts. Top & Bott. of Bott. Slab
- (h) 16- #8a1 bars @ 6 1/2" cts. Bott. of Top Slab & Top of Bott. Slab
- (j) *13- #8a1 bars @ 6 1/2" cts. Bott. of Top Slab & Top of Bott. Slab
- (k) 5- #4a5 bars @ 2'-0" cts. Bott. of Bott. Slab
- (m)**3- #4a5 bars @ 2'-0" cts. Bott. of Bott. Slab
- (n) 1- #6h13 & 1- #6h14 bars Top of Top Slab (Place as shown in cross section)
- (p)**13- #6h12 bars at 12" cts. Bott. of Top Slab
- (q) *14- #6h15 bars @ 11" cts. Top & Bott. of Bott. Slab
- (1z) 7- #5w3 bars @ 9" cts.
- (2a) 13- #7z bars @ 8" cts.
- (2b) Fan 5- #7z bars
- (2c) 7- #5w2 bars @ 9" cts.
- (2d) 24- #7z bars @ 8" cts.
- (2e) Fan 8- #7z bars
- (2f) 24- #5h24 bars @ 1'-2" cts. Top & Bott. of Slab
- (2g) Fan 5- #5h25 bars Top & Bott. of Slab
- (2h) 9x2- #5a7 bars @ 10" cts. Top & Bott. of Slab
- (3v) Fan 10- #8a1 bars Bott. of Top Slab & Top of Bott. Slab
- (3w) Fan 3- #4a5 bars Bott. of Bott. Slab
- (3x) Fan 5- #8a2 bars Bott. of Top Slab & Top of Bott. Slab
- (3y) Fan 1- #4a6 bars Bott. of Bott. Slab
- (3z) Fan 6- #8a2 bars Bott. of Top Slab & Top of Bott. Slab
- (4a) Fan 1- #4a6 bars Bott. of Bott. Slab
- (4b) Fan 9- #8a1 bars Bott. of Top Slab & Top of Bott. Slab
- (4c) Fan 3- #4a5 bars Bott. of Bott. Slab
- (4f) 8- #7z2 bars @ 8"***

*a1, h15 bars in skew portion of slab shall be ordered full length & cut to fit. Balance of bar to be used in same end of culvert Top of Bottom Slab.

**a5, h12 bars in skew portion of slab shall be ordered full length & cut to fit.

***z2 bars shall be placed in footing ordered full length & cut to fit.

REVISIONS	
NAME	DATE

ILLINOIS DEPARTMENT OF TRANSPORTATION
**BOX CULVERT
 NO. END PARTIAL PLAN AND DETAILS
 PROPOSED STRUCTURE NO. 011-7052
 STA. 483+34.34**
 SCALE: NONE
 DATE: 03/06/2012
 DRAWN BY: GLD
 CHECKED BY: WLB