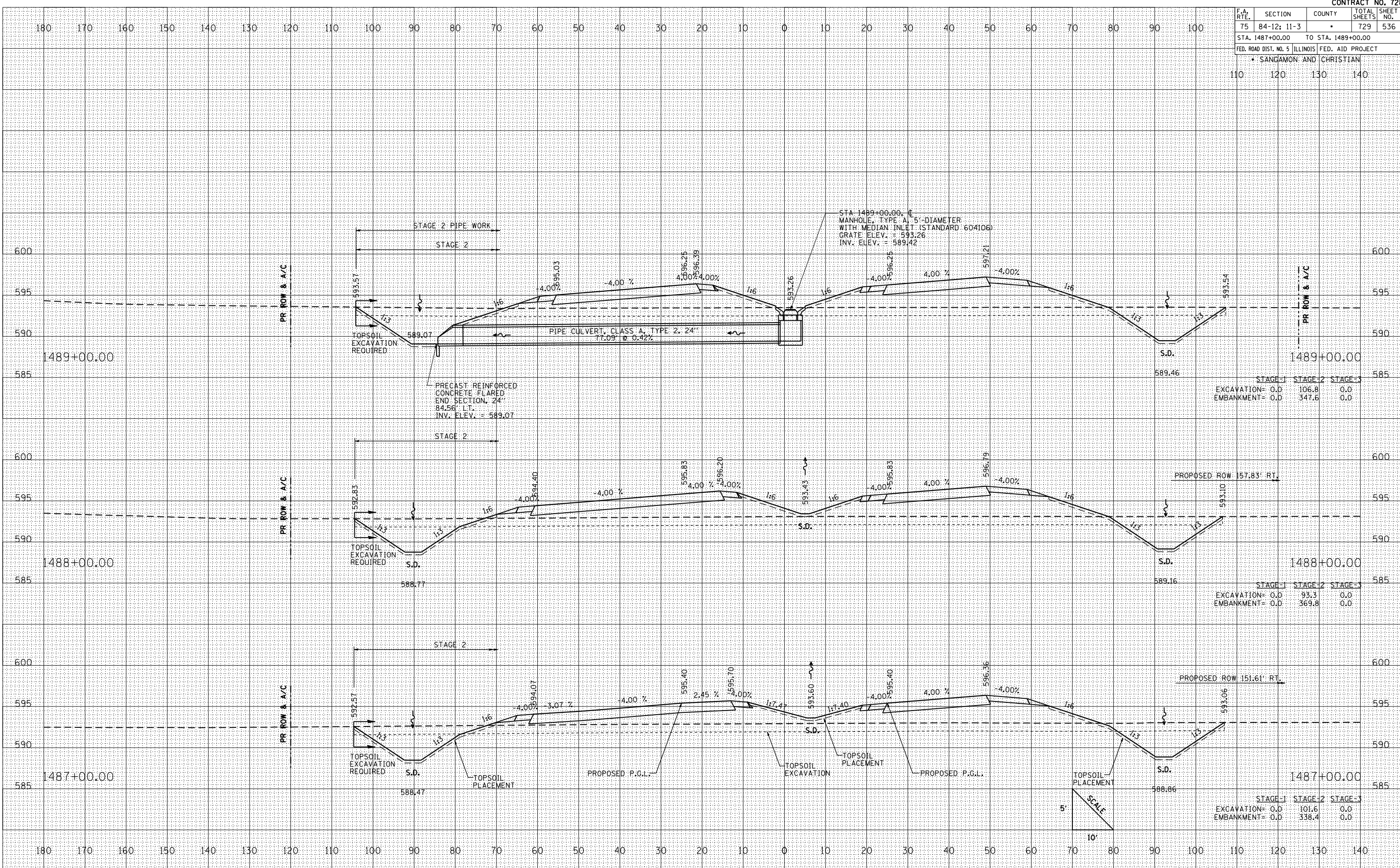


F.A. RTE.	SECTION	COUNTY	TOTAL SHEETS	SHEET NO.
75	84-12; 11-3		729	536
STA. 1487+00.00 TO STA. 1489+00.00				
FED. ROAD DIST. NO. 5 ILLINOIS FED. AID PROJECT				
• SANGAMON AND CHRISTIAN				
110	120	130	140	

BY		DATE	
FINAL SURVEY	NO. 00		
SURVEYED	NO. 00		
PLOTTED	NO. 00		
NOTE BOOK	NO. 00		
AREAS	NO. 00		
CHECKED	NO. 00		

BY		DATE	
ORIGINAL SURVEY	NO. 00		
SURVEYED	NO. 00		
PLOTTED	NO. 00		
NOTE BOOK	NO. 00		
AREAS	NO. 00		
CHECKED	NO. 00		

PLOT DATE = 2/15/2012  
 FILE NAME = 211765.dwg  
 PLOT SCALE = 1/4" = 10'  
 REFERENCE = SHEET #



CROSS SECTIONS: IL RTE. 29 - STA. 1487+00 TO STA. 1489+00