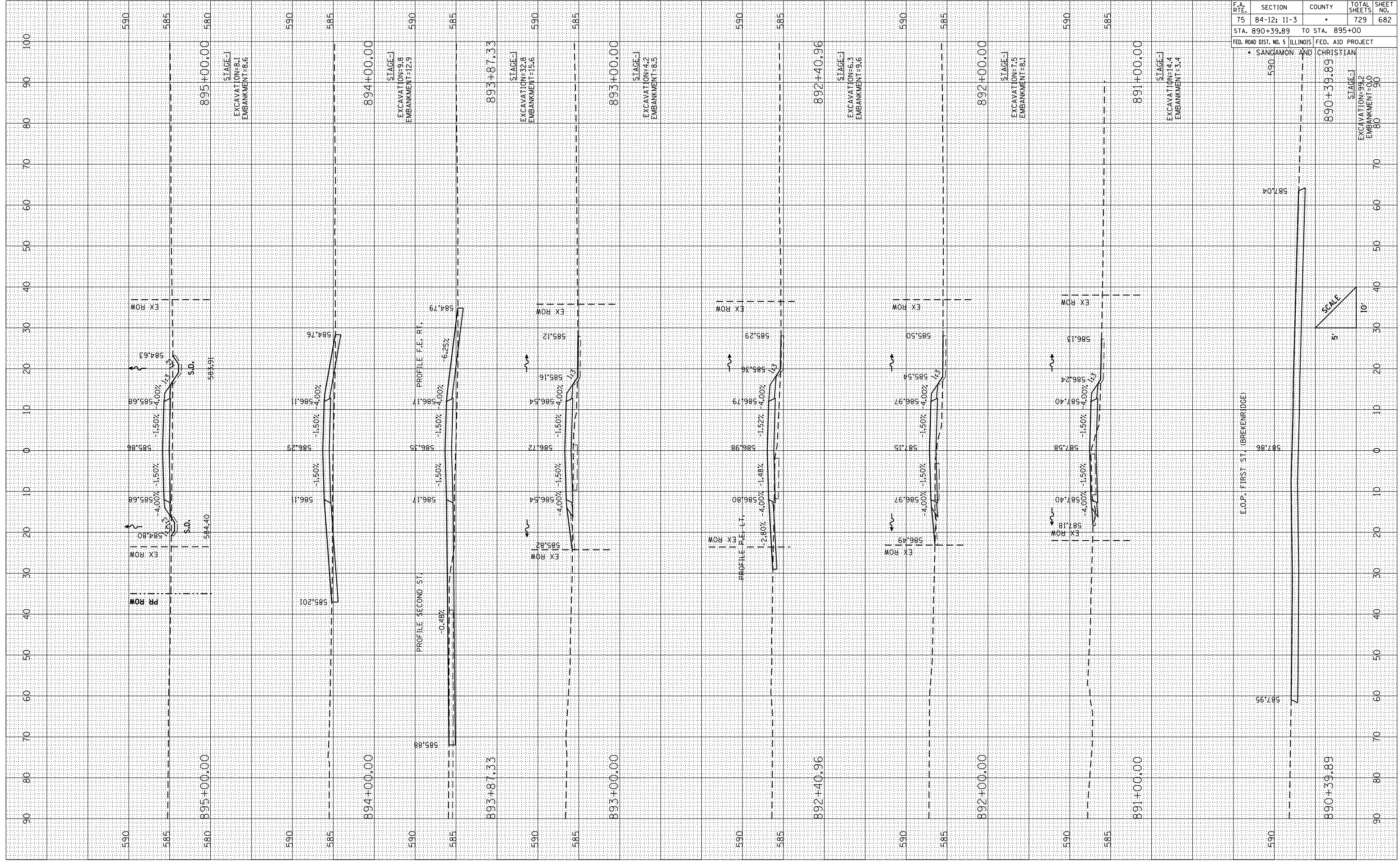


F.A. RTE.	SECTION	COUNTY	TOTAL SHEETS	SHEET NO.
75	84-12; 11-3	•	729	682
STA. 890+39.89 TO STA. 895+00				
FED. ROAD DIST. NO. 5 ILLINOIS FED. AID PROJECT				

FINAL SURVEY	BY	DATE
SURVEYED		
PLOTTED		
NOTE BOOK		
AREAS CHECKED		
NO.		

ORIGINAL SURVEY	BY	DATE
SURVEYED		
PLOTTED		
NOTE BOOK		
AREAS CHECKED		
NO.		

PLOT DATE = 3/28/2012
 FILE NAME = 21765.dwg
 PLOT SCALE = 21/768" / IN.
 REFERENCE = \$REF\$



STATION	DESCRIPTION	STATION	DESCRIPTION
895+00.00	STAGE-1 EXCAVATION=8.1 EMBANKMENT=8.6	890+39.89	STAGE-1 EXCAVATION=9.2 EMBANKMENT=9.0
894+00.00	STAGE-1 EXCAVATION=9.8 EMBANKMENT=12.9		
893+87.33	STAGE-1 EXCAVATION=32.8 EMBANKMENT=15.6		
893+00.00	STAGE-1 EXCAVATION=4.2 EMBANKMENT=8.5		
892+40.96	STAGE-1 EXCAVATION=6.3 EMBANKMENT=9.6		
892+00.00	STAGE-1 EXCAVATION=7.5 EMBANKMENT=8.1		
891+00.00	STAGE-1 EXCAVATION=14.4 EMBANKMENT=3.4		
590	E.O.P. FIRST ST. (BREKENRIDGE)	585	
585		580	
580		575	
575		570	
570		565	
565		560	
560		555	
555		550	
550		545	
545		540	
540		535	
535		530	
530		525	
525		520	
520		515	
515		510	
510		505	
505		500	
500		495	
495		490	
490		485	
485		480	
480		475	
475		470	
470		465	
465		460	
460		455	
455		450	
450		445	
445		440	
440		435	
435		430	
430		425	
425		420	
420		415	
415		410	
410		405	
405		400	
400		395	
395		390	
390		385	
385		380	
380		375	
375		370	
370		365	
365		360	
360		355	
355		350	
350		345	
345		340	
340		335	
335		330	
330		325	
325		320	
320		315	
315		310	
310		305	
305		300	
300		295	
295		290	
290		285	
285		280	
280		275	
275		270	
270		265	
265		260	
260		255	
255		250	
250		245	
245		240	
240		235	
235		230	
230		225	
225		220	
220		215	
215		210	
210		205	
205		200	
200		195	
195		190	
190		185	
185		180	
180		175	
175		170	
170		165	
165		160	
160		155	
155		150	
150		145	
145		140	
140		135	
135		130	
130		125	
125		120	
120		115	
115		110	
110		105	
105		100	
100		95	
95		90	
90		85	
85		80	
80		75	
75		70	
70		65	
65		60	
60		55	
55		50	
50		45	
45		40	
40		35	
35		30	
30		25	
25		20	
20		15	
15		10	
10		5	
5		0	