

**INDEX OF SHEETS**

- 1 COVER SHEET
- 2 GENERAL NOTES
- 3, 4 SUMMARY OF QUANTITIES
- 5 - 8 PLAN SHEETS
- 9 POLE HANDHOLE WIRING DETAILS
- 10 NIGHTTIME LIGHTING TRAFFIC DETAILS

**STANDARDS**

000001-06	720011-01
001006	728001-01
701001-02	729001-01
701006-03	805001-01
701301-04	825001-01
701901-02	830006
720001-01	836001-01
720006-03	880001-01

**STATE OF ILLINOIS**

**DEPARTMENT OF TRANSPORTATION**

**DIVISION OF HIGHWAYS**

**PROPOSED  
HIGHWAY PLANS**

F.A.U. ROUTE 8012A (OLD U.S. 36)

SECTION 21L

PROJECT HSIP-8012(013)

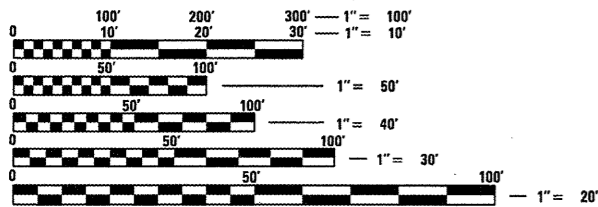
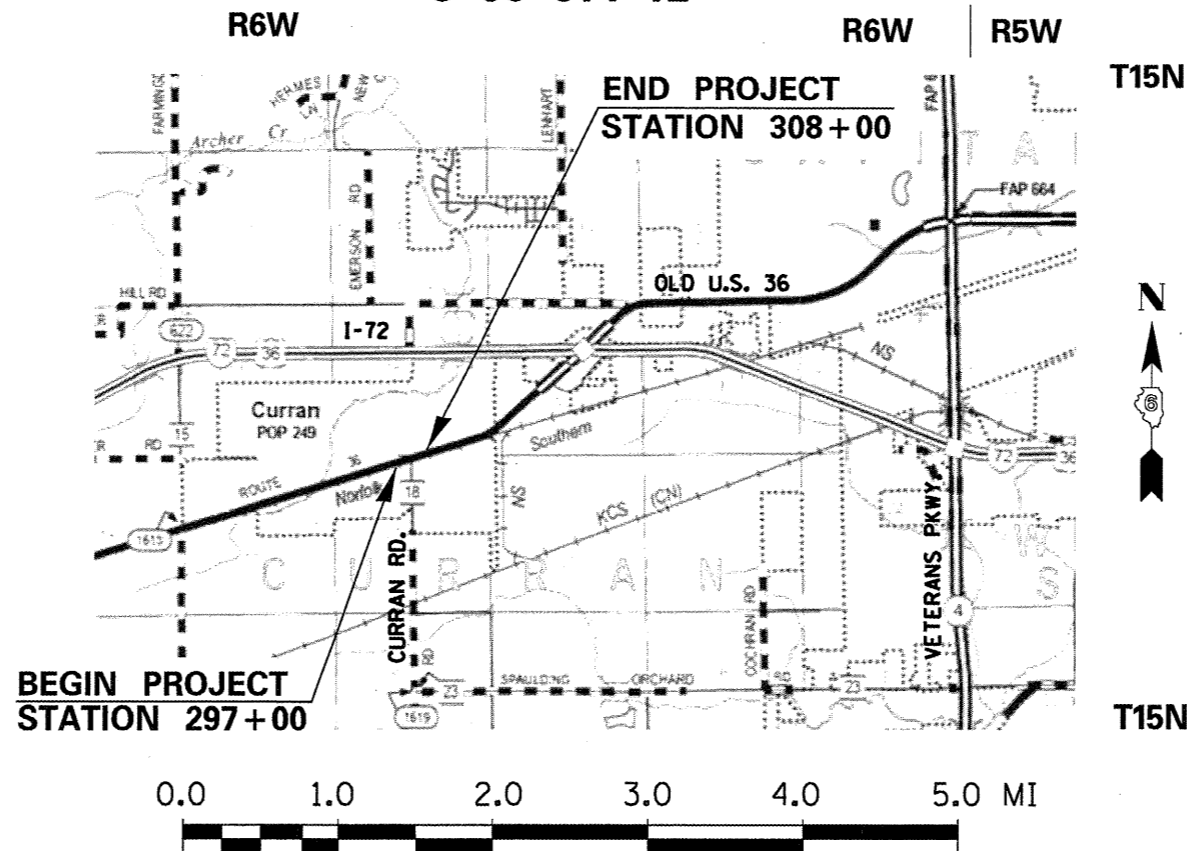
**HIGHWAY LIGHTING & FLASHING BEACON INSTALLATION**

**SANGAMON COUNTY**

C-96-014-12

F.A.U. RTE. 8012A	SECTION 21L	COUNTY SANGAMON	TOTAL SHEETS 10	SHEET NO. 1
ILLINOIS		CONTRACT NO. 72F06		

D-96-014-12



FULL SIZE PLANS HAVE BEEN PREPARED USING STANDARD ENGINEERING SCALES. REDUCED SIZED PLANS WILL NOT CONFORM TO STANDARD SCALES. IN MAKING MEASUREMENTS ON REDUCED PLANS, THE ABOVE SCALES MAY BE USED.

J.U.L.I.E.  
JOINT UTILITY LOCATION INFORMATION FOR EXCAVATION  
1-800-892-0123  
OR 811

PROJECT ENGINEER: VINCE MADONIA (217) 785-9046  
TEAM MANAGER: TIM SLAGLE (217) 785-5338  
**CONTRACT NO. 72F06**

**AVERAGE DAILY TRAFFIC**  
OLD U.S. 36 - 4,200 (3.6% SU & MU) IN 2007  
CURRAN ROAD - 2,000 (4.0% SU & MU) IN 2007

STATE OF ILLINOIS  
DEPARTMENT OF TRANSPORTATION  
DIVISION OF HIGHWAYS

SUBMITTED *December 16, 2011*  
*Roy Z. Brundage*  
DEPUTY DIRECTOR OF HIGHWAYS, REGION ENGINEER

*May 11, 2012*  
*John D. Baranzelli, P.E.*  
acting ENGINEER OF DESIGN AND ENVIRONMENT

*May 11, 2012*  
*William R. Freyler*  
acting DIRECTOR OF HIGHWAYS, CHIEF ENGINEER

**PRINTED BY THE AUTHORITY  
OF THE STATE OF ILLINOIS**



# SUMMARY OF QUANTITIES

CONSTRUCTION CODE  
0021  
90% FEDERAL  
10% STATE  
HIGHWAY LIGHTING  
RURAL

URBAN

CODE	ITEM	UNIT	TOTAL	RURAL
67100100	MOBILIZATION	L SUM	1	1
72000100	SIGN PANEL - TYPE 1	SQ FT	25.2	25.2
72000200	SIGN PANEL - TYPE 2	SQ FT	16	16
72800100	TELESCOPING STEEL SIGN SUPPORT	FOOT	52	52
80400100	ELECTRIC SERVICE INSTALLATION	EACH	1	1
81028760	UNDERGROUND CONDUIT, COILABLE NONMETALLIC CONDUIT, 2 1/2" DIA.	FOOT	72	72
81603000	UNIT DUCT, 600V, 2-1C NO. 8, 1/C NO. 8 GROUND, (XLP-TYPE USE), 3/4" DIA. POLYETHYLENE	FOOT	401	401
82102250	LUMINAIRE, SODIUM VAPOR, HORIZONTAL MOUNT, 250 WATT	EACH	3	3
82500300	LIGHTING CONTROLLER, POLE MOUNTED, 240VOLT, 30AMP	EACH	1	1
83009600	LIGHT POLE, ALUMINUM, 45 FT. M. H., 15 FT. MAST ARM	EACH	3	3
83600300	LIGHT POLE FOUNDATION, 30" DIAMETER	FOOT	20	20
83800205	BREAKAWAY DEVICE, TRANSFORMER BASE, 15 INCH BOLT CIRCLE	EACH	3	3
Z0048665	RAILROAD PROTECTIVE LIABILITY INSURANCE	L SUM	1	1
X0326899	SOLAR-POWERED FLASHING BEACON ASSEMBLY (COMPLETE)	EACH	1	1

• SPECAILTY ITEMS

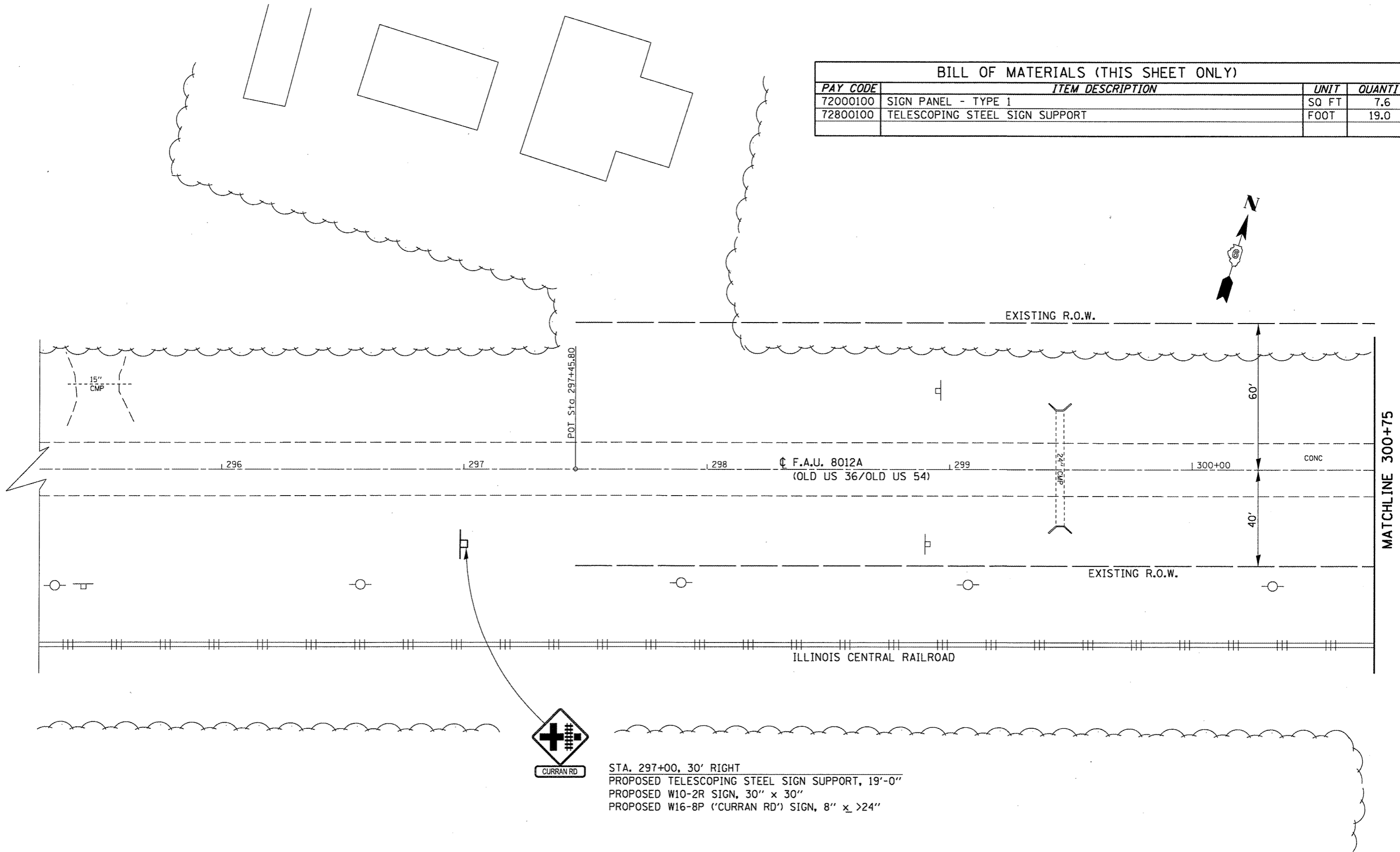
# SUMMARY OF QUANTITIES

CONSTRUCTION CODE
21
90% FEDERAL 10% STATE
HIGHWAY LIGHTING
RURAL

CODE	ITEM	UNIT	TOTAL	HIGHWAY LIGHTING
				RURAL
X7240505	RELOCATE SIGN PANEL AND POST	EACH	1	1

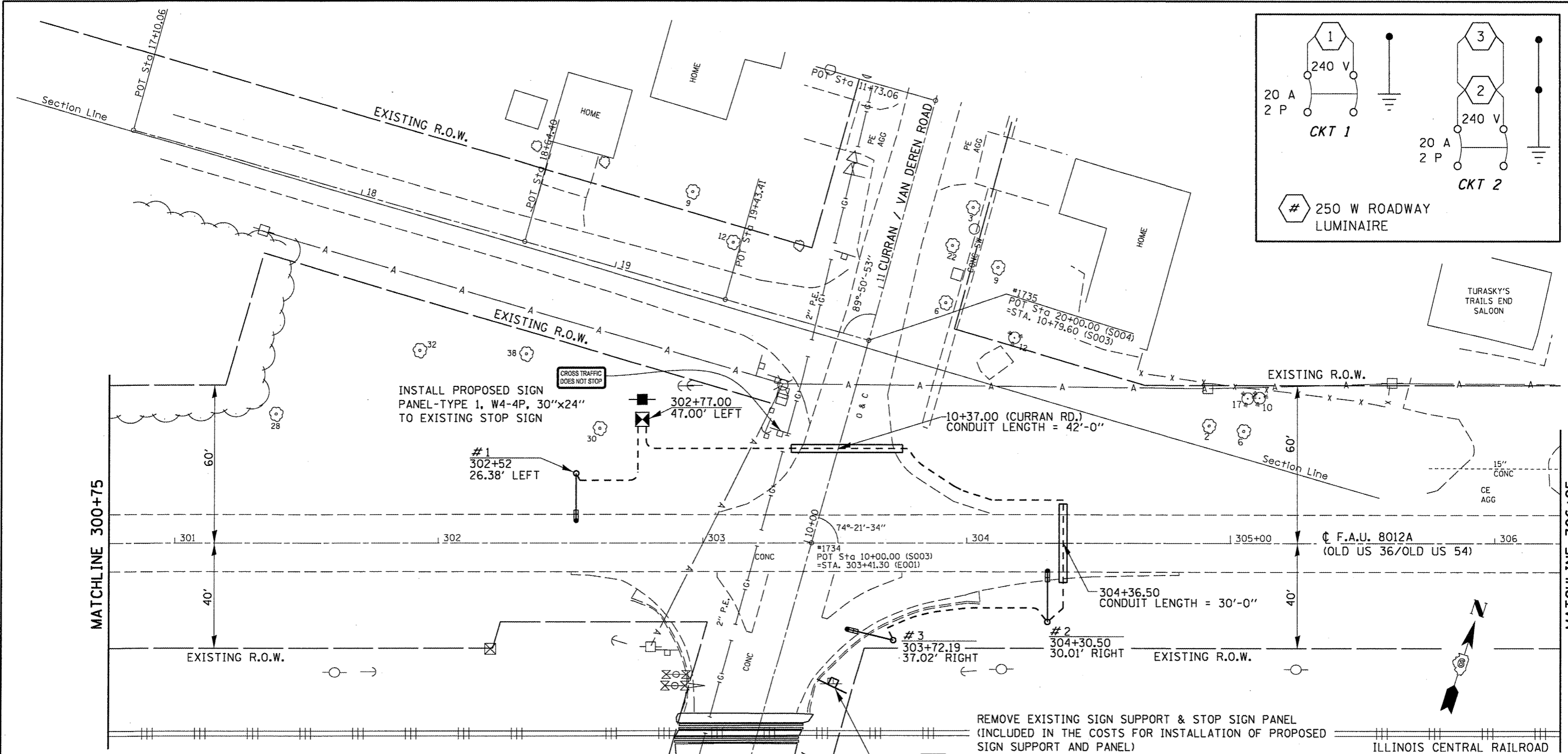
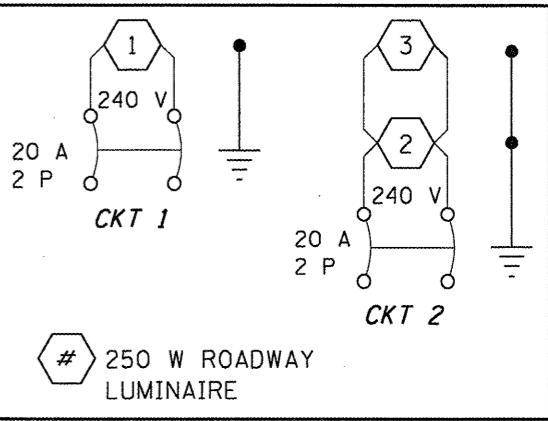
• SPECAILTY ITEMS

BILL OF MATERIALS (THIS SHEET ONLY)			
PAY CODE	ITEM DESCRIPTION	UNIT	QUANTITY
72000100	SIGN PANEL - TYPE 1	SQ FT	7.6
72800100	TELESCOPING STEEL SIGN SUPPORT	FOOT	19.0



STA. 297+00, 30' RIGHT  
 PROPOSED TELESCOPING STEEL SIGN SUPPORT, 19'-0"  
 PROPOSED W10-2R SIGN, 30" x 30"  
 PROPOSED W16-8P ('CURRAN RD') SIGN, 8" x >24"

FILE NAME =	USER NAME = Slegler	DESIGNED -	REVISD -	<b>STATE OF ILLINOIS DEPARTMENT OF TRANSPORTATION</b>	<b>LIGHTING PLAN SHEET</b>			F.A.U. RTE. 8012A	SECTION 21L	COUNTY SANGAMON	TOTAL SHEETS 10	SHEET NO. 5
CONTRACT NO. 72F06	CONTRACT NO. 72F06	DRAWN - RTS	REVISD -		SCALE:	SHEET 1	OF 4	SHEETS	STA.	TO STA.	ILLINOIS FED. AID PROJECT	
		PLOT SCALE = 40.0000' / in.	REVISD -									
		PLOT DATE = Dec-16-2011 02:56:24PM	REVISD -									



INSTALL PROPOSED SIGN PANEL-TYPE 1, W4-4P, 30"x24" TO EXISTING STOP SIGN

REMOVE EXISTING SIGN SUPPORT & STOP SIGN PANEL (INCLUDED IN THE COSTS FOR INSTALLATION OF PROPOSED SIGN SUPPORT AND PANEL)  
 PROPOSED TELESCOPING STEEL SIGN SUPPORT, 16'-0"  
 PROPOSED SIGN PANEL-TYPE 2, R1-1, OVERSIZED, 48"x48"  
 PROPOSED SIGN PANEL-TYPE 1, SIGN W4-4P, 30"x24" (MUTCD, 2009; TABLE 2C-3)

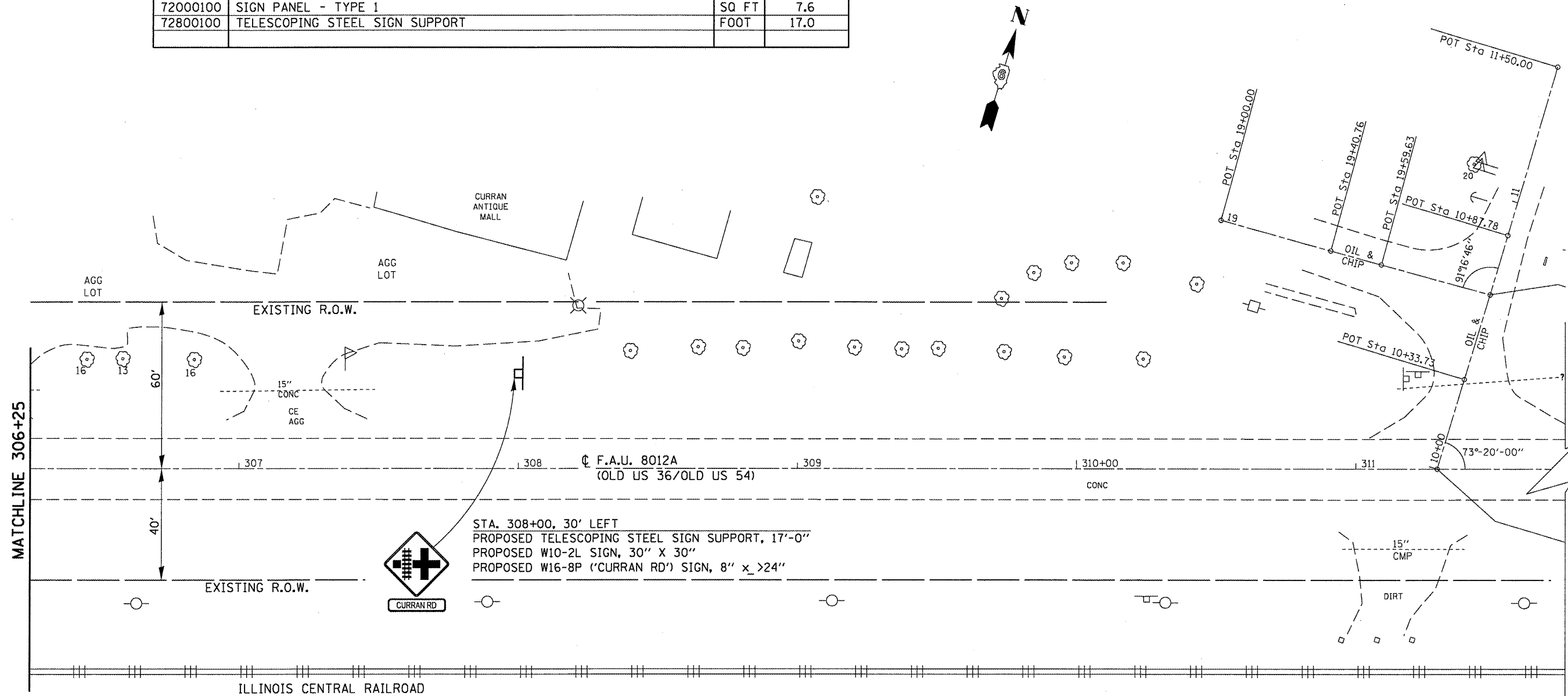
**PROPOSED LEGEND**

- LIGHT POLE, ALUMINUM, 45 FT. M.H., 15 FT. MAST ARM WITH LUMINAIRE, SODIUM VAPOR, HORIZONTAL MOUNT, 250 WATT & TRANSFORMER BASE
- ELECTRIC SERVICE INSTALLATION 120/240 V, 1 PHASE 4 WIRE
- LIGHTING CONTROLLER, POLE MOUNTED, 240 V, 30 AMP
- UNIT DUCT, 600 V, 2-1C NO. 8, 1/C NO. 8 GROUND, (XLP-TYPE USE), 3/4" DIA. POLYETHYLENE
- UNDERGROUND CONDUIT, COILABLE NON-METALLIC CONDUIT, 2 1/2" DIA. (SCH.80)

**BILL OF MATERIALS (THIS SHEET ONLY)**

PAY CODE	ITEM DESCRIPTION	UNIT	QUANTITY
80400100	ELECTRIC SERVICE INSTALLATION	EACH	1
81028760	UNDERGROUND CONDUIT, COILABLE NONMETALLIC CONDUIT, 2 1/2" DIA.	FOOT	72
81603000	UNIT DUCT, 600V, 2-1C NO. 8 GROUND, (XLP-TYPE USE), 3/4" DIA. POLYETHYLENE	FOOT	401
82102250	LUMINAIRE, SODIUM VAPOR, HORIZONTAL MOUNT, 250 WATT	EACH	3
82500300	LIGHTING CONTROLLER, POLE MOUNTED, 240 VOLT, 30 AMP	EACH	1
83009600	LIGHT POLE, ALUMINUM, 45 FT. M.H., 15 FT. MAST ARM	EACH	3
83600300	LIGHT POLE FOUNDATION, 30" DIAMETER	FOOT	20
83800205	BREAKAWAY DEVICE, TRANSFORMER BASE, 15 INCH BOLT CIRCLE	EACH	3
72000100	SIGN PANEL - TYPE 1	SQ FT	10
72000200	SIGN PANEL - TYPE 2	SQ FT	16
72800100	TELESCOPING STEEL SIGN SUPPORT	FOOT	16

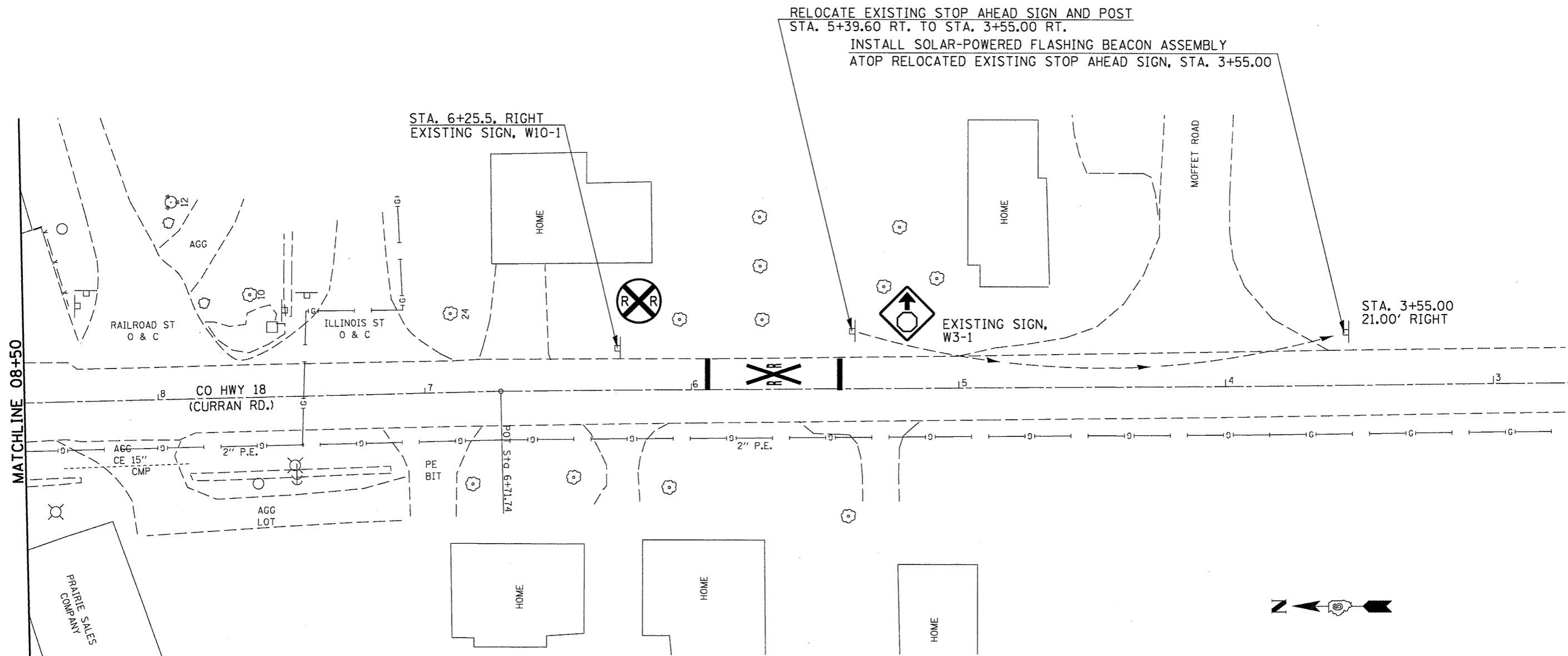
BILL OF MATERIALS (THIS SHEET ONLY)				
PAY CODE	ITEM DESCRIPTION	UNIT	QUANTITY	
72000100	SIGN PANEL - TYPE 1	SQ FT	7.6	
72800100	TELESCOPING STEEL SIGN SUPPORT	FOOT	17.0	



STA. 308+00, 30' LEFT  
 PROPOSED TELESCOPING STEEL SIGN SUPPORT, 17'-0"  
 PROPOSED W10-2L SIGN, 30" X 30"  
 PROPOSED W16-8P ('CURRAN RD') SIGN, 8" x >24"

CURRAN RD

FILE NAME =	USER NAME = Slegler	DESIGNED -	REVISED -	<b>STATE OF ILLINOIS DEPARTMENT OF TRANSPORTATION</b>	<b>LIGHTING PLAN SHEET</b>		F.A.U. RTE. 8012A	SECTION 21L	COUNTY SANGAMON	TOTAL SHEETS 10	SHEET NO. 7	
CONTRACT NO. 72F06	CONTRACT NO. 72F06	DRAWN - RTS	REVISED -		SCALE:	SHEET 3 OF 4 SHEETS	STA.	TO STA.	ILLINOIS FED. AID PROJECT			
		CHECKED -	REVISED -									
		DATE - 10-11-11	REVISED -									



RELOCATE EXISTING STOP AHEAD SIGN AND POST  
 STA. 5+39.60 RT. TO STA. 3+55.00 RT.  
 INSTALL SOLAR-POWERED FLASHING BEACON ASSEMBLY  
 ATOP RELOCATED EXISTING STOP AHEAD SIGN, STA. 3+55.00

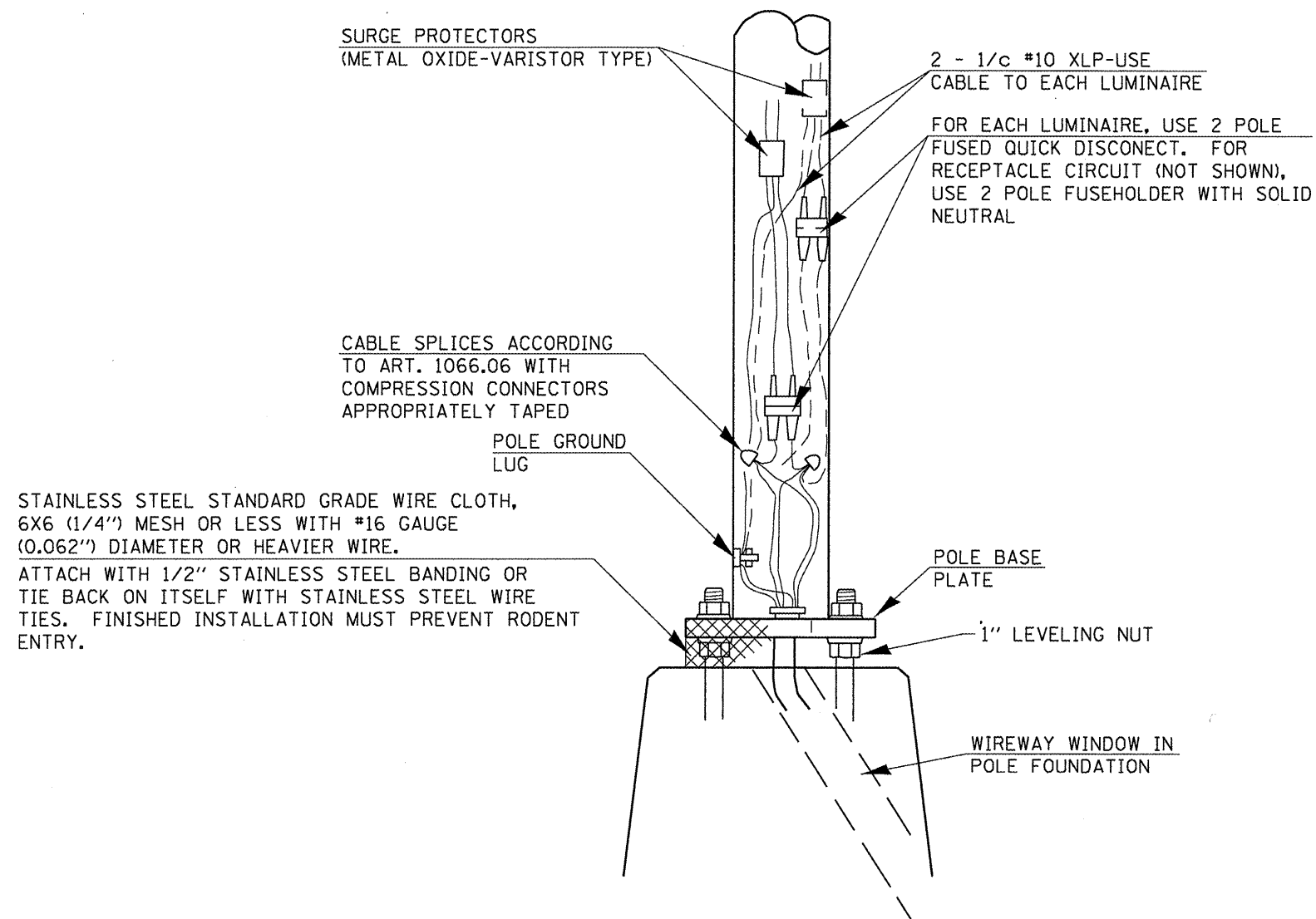
STA. 6+25.5, RIGHT  
 EXISTING SIGN, W10-1

EXISTING SIGN,  
 W3-1

STA. 3+55.00  
 21.00' RIGHT

BILL OF MATERIALS (THIS SHEET ONLY)			
PAY CODE	ITEM DESCRIPTION	UNIT	QUANTITY
X0326899	SOLAR-POWERED FLASHING BEACON ASSEMBLY (COMPLETE)	EACH	1
X0326899	RELOCATE SIGN PANEL AND POST	EACH	1





## WIRING DETAIL

(NO SCALE)

### GENERAL NOTES

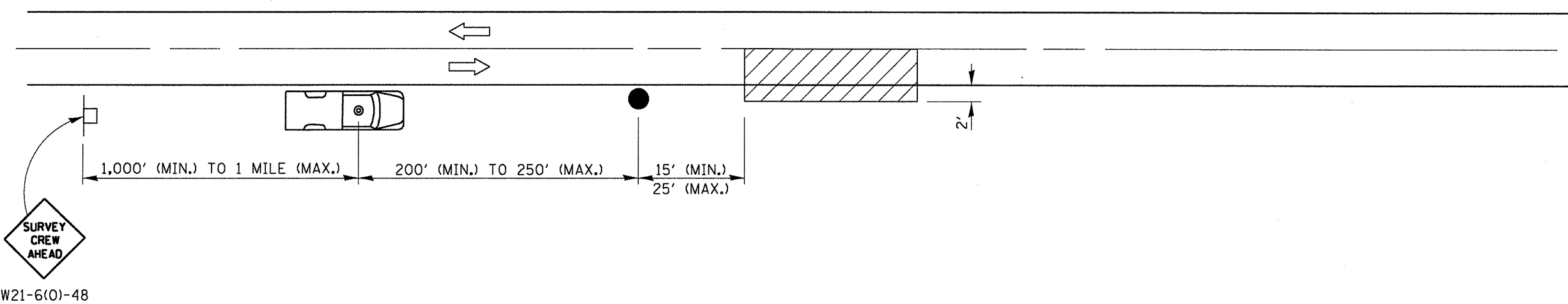
ALL TAPED SPLICES SHALL USE 2 LAYERS OF ELECTRICAL TAPE OVER 3 LAYERS OF RUBBER TAPE AS REQUIRED BY THE STANDARD SPECIFICATIONS. COAT THE FINISHED TAPED SPLICE WITH BONDING COMPOUND.

ALL CABLE SPLICES SHALL BE TAPED UNLESS ANOTHER METHOD HAS BEEN SPECIFICALLY APPROVED BY THE ENGINEER.

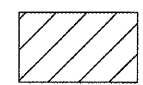
FOR EXAMPLE PURPOSES, THE POLE IS SHOWN ON AN ANCHOR BASE. IF THE POLE IS REQUIRED TO BE SET ON A BREAKWAY BASE, CONSULT THE STANDARD SPECIFICATIONS.

ALL DIMENSIONS ARE IN MILLIMETERS (INCHES) UNLESS OTHERWISE SHOWN.

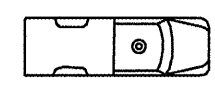
FILE NAME =	USER NAME = Sleglert	DESIGNED -	REVISED -	<b>STATE OF ILLINOIS DEPARTMENT OF TRANSPORTATION</b>	<b>POLE HANDHOLE WIRING</b>	F.A.U. RTE.	SECTION	COUNTY	TOTAL SHEETS	SHEET NO.
es:\pw\work\pilot\slg\slg\0203566\05xxx-shd-details.dgn		DRAWN -	REVISED -			8012	ZIL	SANGAMON	10	9
PLOT SCALE = 0.0000 ' / in.		CHECKED -	REVISED -							
PLOT DATE = Dec-16-2011 02:57:15PM		DATE -	REVISED -		SCALE:					
					SHEET 1	OF 1	SHEETS	STA.	TO STA.	CONTRACT NO. 72F06 ILLINOIS FED. AID PROJECT



**SYMBOLS**



WORK AREA



TRUCK WITH FLASHING AMBER LIGHT AND DUAL EMERGENCY FLASHERS



FLAGGER WITH TRAFFIC CONTROL SIGN



SIGN ON PORTABLE OR PERMANENT SUPPORT

**TYPICAL APPLICATIONS:**  
UTILITY OPERATIONS

FILE NAME =	USER NAME = Sleglert	DESIGNED -	REVISED -	<b>STATE OF ILLINOIS DEPARTMENT OF TRANSPORTATION</b>	<b>NIGHTTIME LIGHTING INSPECTION</b>				F.A.U. RTE. 8012	SECTION 21L	COUNTY SANGAMON	TOTAL SHEETS 10	SHEET NO. 10
ct\pw\work\pwido\slgert\d0283566\06xxx-shd-details.dgn		DRAWN -	REVISED -		SCALE:	SHEET 1	OF 1	SHEETS	STA.	TO STA.	<b>CONTRACT NO. 72F06</b>		
		CHECKED -	REVISED -		ILLINOIS FED. AID PROJECT								
		DATE -	REVISED -										