

STATE OF ILLINOIS
DEPARTMENT OF TRANSPORTATION
DIVISION OF HIGHWAYS

**PROPOSED
HIGHWAY PLANS**

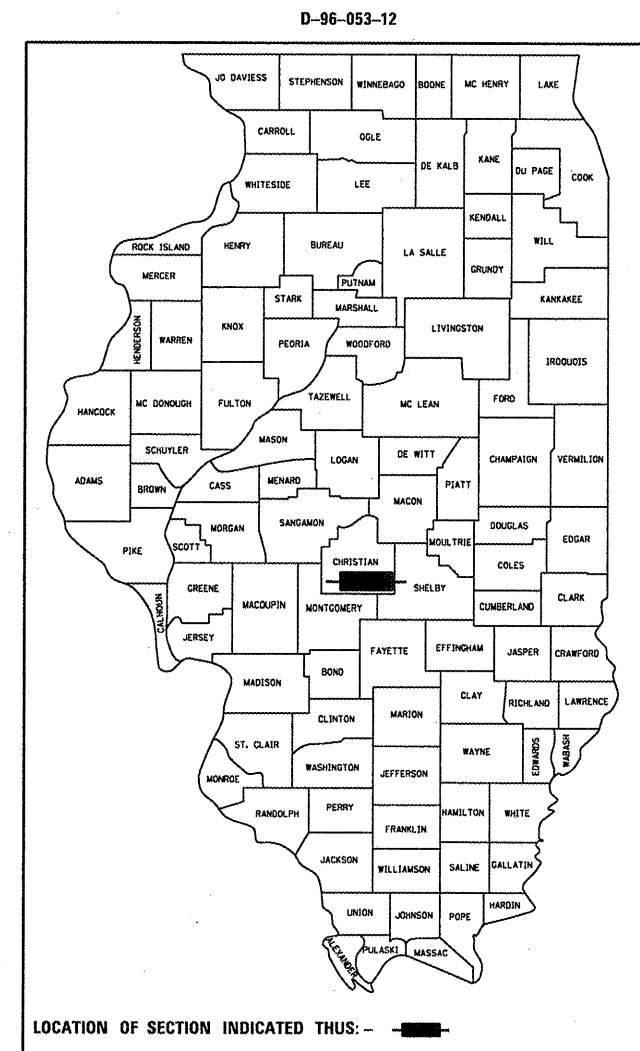
FAP ROUTE 322&325 (US 51 & IL 16)
SECTION (14)RS-4 & (43)RS-7
PROJECT F-NHF-000S (894)
TYPE of IMPROVEMENT
CHRISTIAN COUNTY

F.A.P. RTE.	SECTION	COUNTY	TOTAL SHEETS	SHEET NO.
322	(14)RS-4 & (43)RS-7	CHRISTIAN	23	1
		ILLINOIS	CONTRACT NO. 72F38	

FOR INDEX OF SHEETS, SEE SHEET NO. 2

HIGHWAY STANDARDS

000001-06	701306-03
406201-01	701311-03
442201-03	701901-02
701006-03	780001-03
701201-04	781001-03
701301-04	



C-96-053-12

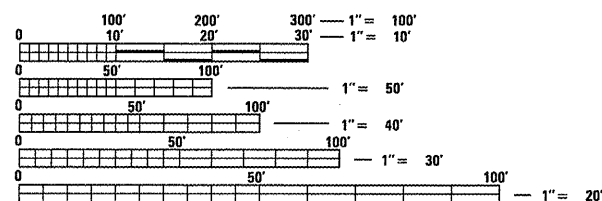
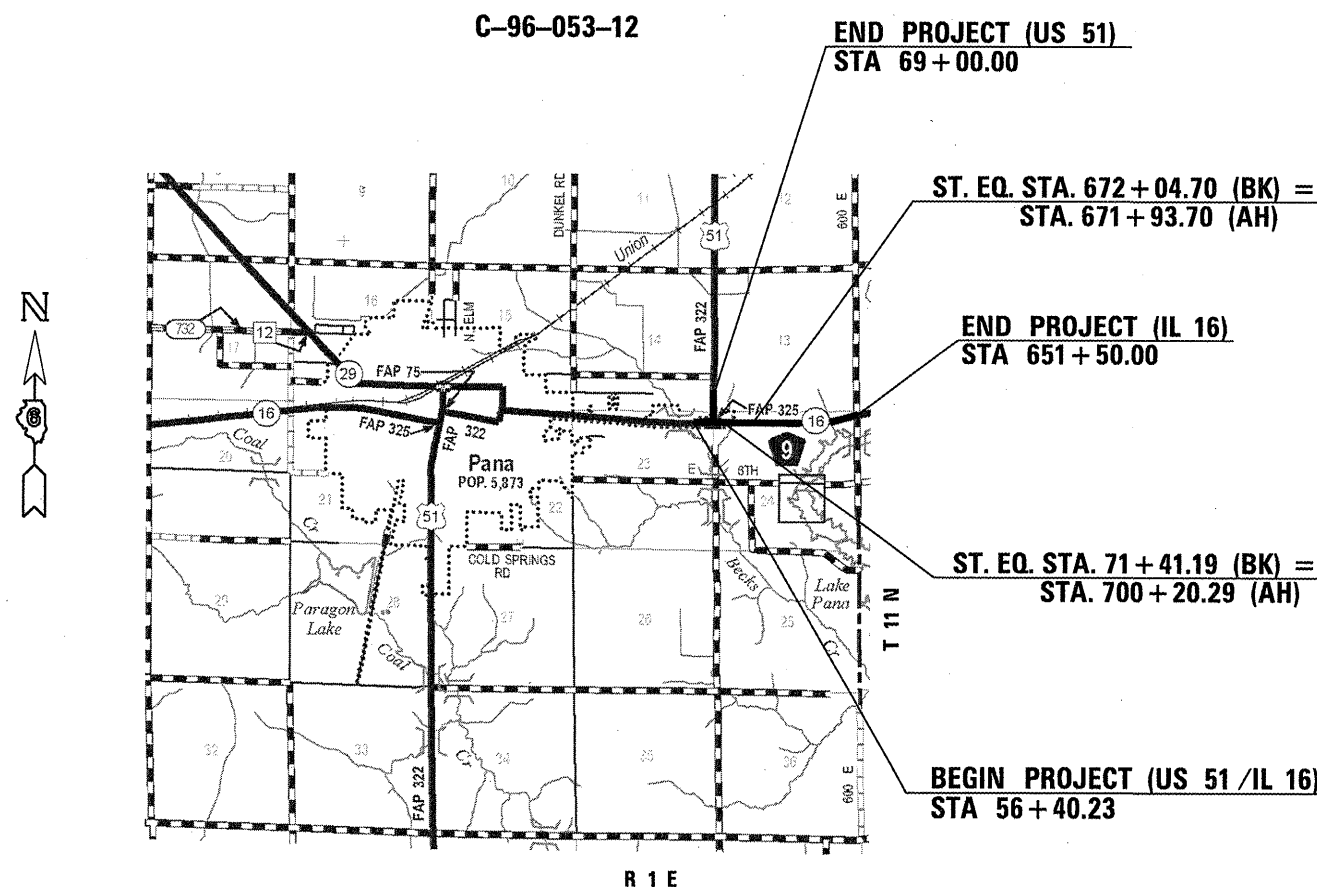
END PROJECT (US 51)
STA 69+00.00

ST. EQ. STA. 672+04.70 (BK) =
STA. 671+93.70 (AH)

END PROJECT (IL 16)
STA 651+50.00

ST. EQ. STA. 71+41.19 (BK) =
STA. 700+20.29 (AH)

BEGIN PROJECT (US 51 / IL 16)
STA 56+40.23



FULL SIZE PLANS HAVE BEEN PREPARED USING STANDARD ENGINEERING SCALES. REDUCED SIZED PLANS WILL NOT CONFORM TO STANDARD SCALES. IN MAKING MEASUREMENTS ON REDUCED PLANS, THE ABOVE SCALES MAY BE USED.

J.U.L.I.E.
JOINT UTILITY LOCATION INFORMATION FOR EXCAVATION
1-800-892-0123
OR 811

PROJECT ENGINEER JEFF MYERS (217)782-4761
TEAM ENGINEER ED KERN (217)524-7547

GROSS LENGTH = 6,923 FT. = 1.3 MILE
NET LENGTH = 6,923 FT. = 1.3 MILE

CONTRACT NO. 72F38

ADT'S

US 51 / IL 16	7250 (%SU = 5.5 ; %MU = 7.6)
US 51 NORTH	3600 (%SU = 6.9 ; %MU = 6.9)
IL 16	4700 (%SU = 4.8 ; %MU = 4.3)

STATE OF ILLINOIS
DEPARTMENT OF TRANSPORTATION
DIVISION OF HIGHWAYS

SUBMITTED March 28 20 12
Roger Z. Ombler
DEPUTY DIRECTOR OF HIGHWAYS, REGION ENGINEER

May 11 20 12
John D. Baranzelli, P.E.
ENGINEER OF DESIGN AND ENVIRONMENT

May 11 20 12
William R. Fleck
DIRECTOR OF HIGHWAYS, CHIEF ENGINEER

**PRINTED BY THE AUTHORITY
OF THE STATE OF ILLINOIS**