

STATE OF ILLINOIS
 DEPARTMENT OF TRANSPORTATION
 DIVISION OF HIGHWAYS

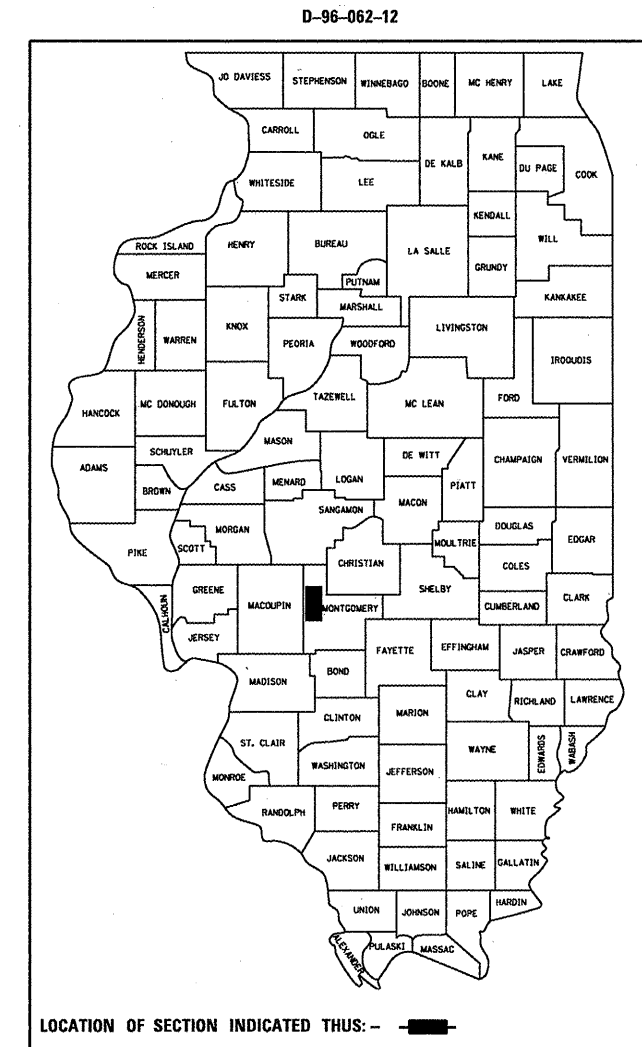
**PROPOSED
 CONTRACT MAINTENANCE**

FAI 55 (I 55)
 SECTION 68(1,2,3,4,5) PATCHING 2012

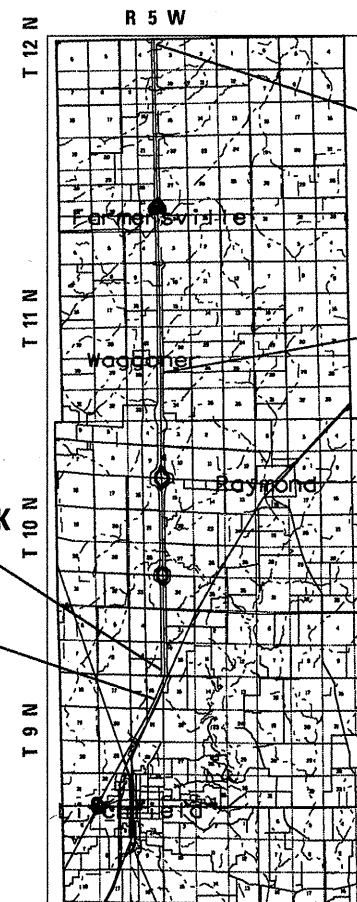
MONTGOMERY COUNTY

F.A.I. RTE.	SECTION	COUNTY	TOTAL SHEETS	SHEET NO.
55	68(1,2,3,4,5)PATCHING 2012	MONTGOMERY	7	1
FED. ROAD DIST. NO.	ILLINOIS	CONTRACT NO. 72F45		

FOR INDEX OF SHEETS, SEE SHEET NO. 2



C-96-062-12



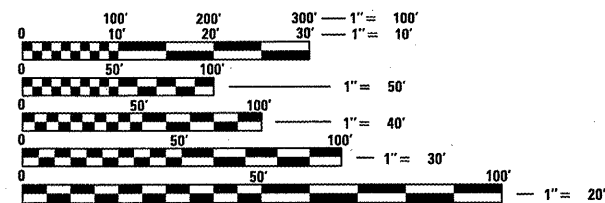
BEGIN PROJECT
 STA 819 + 05

STA EQ. 1333 + 63.55BK
 = 1333 + 60.23AH

STA EQ. 1801 + 09.15BK
 = 1801 + 11.70AH

END PROJECT
 STA 1819 + 40

FAI 55 ADT 28,700 (7,300)



FULL SIZE PLANS HAVE BEEN PREPARED USING STANDARD ENGINEERING SCALES. REDUCED SIZED PLANS WILL NOT CONFORM TO STANDARD SCALES. IN MAKING MEASUREMENTS ON REDUCED PLANS, THE ABOVE SCALES MAY BE USED.

J.U.L.I.E.
 JOINT UTILITY LOCATION INFORMATION FOR EXCAVATION
 1-800-892-0123
 OR 811

PLAN AND CONTRACT TECHNICIAN
 TIMOTHY SHARP (217)782-7743

CONTRACT NO. 72F45

STATE OF ILLINOIS
 DEPARTMENT OF TRANSPORTATION
 DIVISION OF HIGHWAYS

SUBMITTED April 10 20 12
Reginald D. Smith
 DEPUTY DIRECTOR OF HIGHWAYS, REGION ENGINEER

May 11 20 12
John D. Baranzelli, P.E.
 ENGINEER OF DESIGN AND ENVIRONMENT

May 11 20 12
William R. Frey, Jr.
 DIRECTOR OF HIGHWAYS, CHIEF ENGINEER

PRINTED BY THE AUTHORITY
 OF THE STATE OF ILLINOIS