

06-15-12 LETTING ITEM 159

STATE OF ILLINOIS
DEPARTMENT OF TRANSPORTATION
DIVISION OF HIGHWAYS

**PROPOSED
CONTRACT MAINTENANCE**

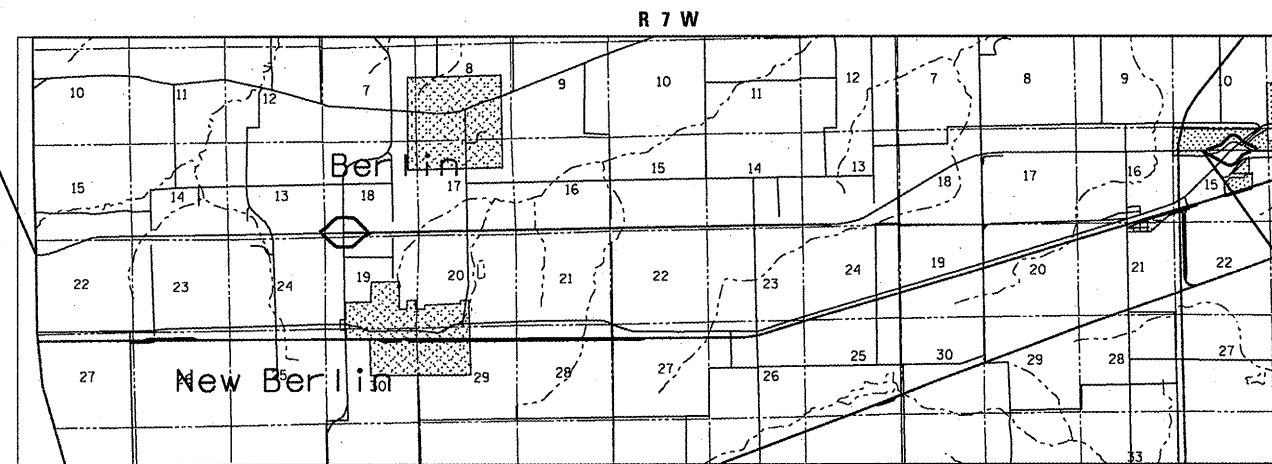
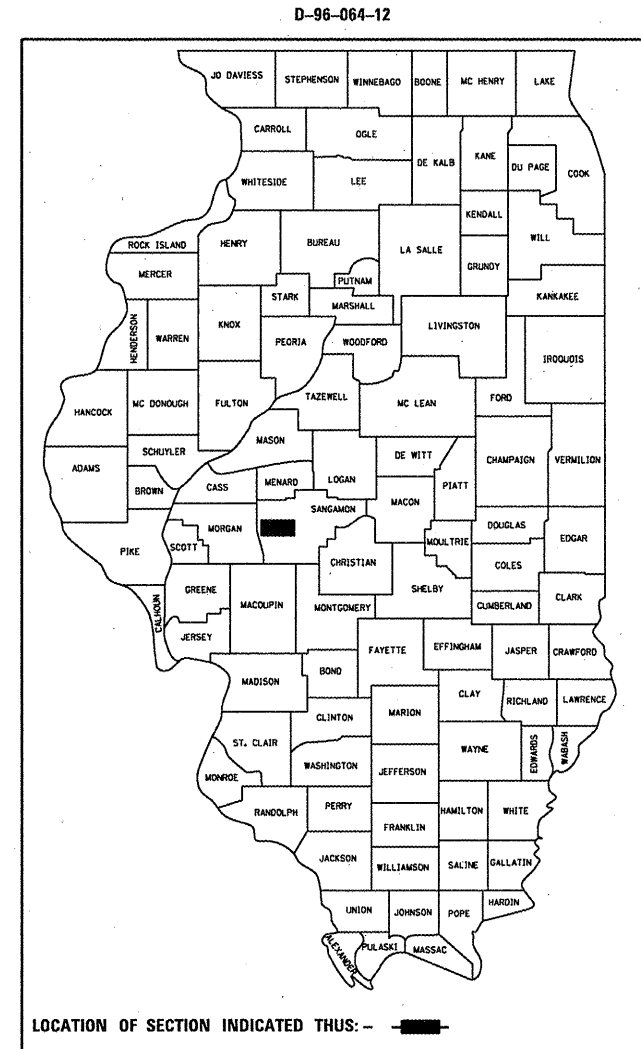
FAI 72(I 72)
SECTION (84-9I)

SANGAMON COUNTY

C-96-064-12

F.A.I. RTE.	SECTION	COUNTY	TOTAL SHEETS	SHEET NO.
72	(84-9I)	SANGAMON	7	1
FED. ROAD DIST. NO.	ILLINOIS	CONTRACT NO. 72F47		

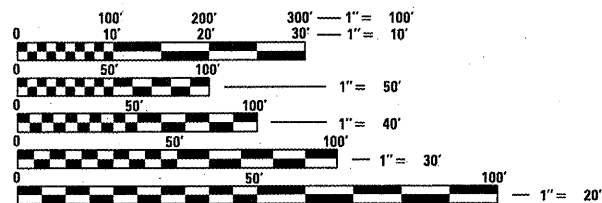
FOR INDEX OF SHEETS, SEE SHEET NO. 2



BEGIN PROJECT
STA 194+80.28

END PROJECT
STA 379+00.00

FAI 72 ADT 14,000 (2,475)



FULL SIZE PLANS HAVE BEEN PREPARED USING STANDARD ENGINEERING SCALES. REDUCED SIZED PLANS WILL NOT CONFORM TO STANDARD SCALES. IN MAKING MEASUREMENTS ON REDUCED PLANS, THE ABOVE SCALES MAY BE USED.

J.U.L.I.E.
JOINT UTILITY LOCATION INFORMATION FOR EXCAVATION
1-800-892-0123
OR 811

PLAN AND CONTRACT TECHNICIAN
TIMOTHY SHARP (217)782-7743

CONTRACT NO. 72F47



STATE OF ILLINOIS
DEPARTMENT OF TRANSPORTATION
DIVISION OF HIGHWAYS

SUBMITTED April 10 20 12

Log Z. D...
DEPUTY DIRECTOR OF HIGHWAYS, REGION ENGINEER

May 11 20 12
John D. Baranzelli, P.E.
ENGINEER OF DESIGN AND ENVIRONMENT

May 11 20 12
William R. Freyler
DIRECTOR OF HIGHWAYS, CHIEF ENGINEER

PRINTED BY THE AUTHORITY
OF THE STATE OF ILLINOIS

INDEX

- 1 COVER
- 2 INDEX/STANDARDS/SIGNATURES
- 3-4 QUANTITIES
- 5 LOCATION MAP
- 6 TYPICAL SECTIONS
- 7 SCHEDULES

STANDARDS

- 442001-04
- 442101-07
- 701101-02
- 701106-02
- 701400-05
- 701401-06
- 701411-08
- 701456-02
- 701901-02

STATE OF ILLINOIS DEPARTMENT OF TRANSPORTATION DIVISION OF HIGHWAYS DISTRICT 6		
EXAMINED	April 9 20 12	
	<i>William A. Burger</i>	ENGINEER OF OPERATIONS
EXAMINED	APRIL 6 20 12	
	<i>Tommy Z. L.</i>	ENGINEER OF PROJECT IMPLEMENTATION
EXAMINED	APRIL 9 20 12	
	<i>John C. Weyant</i>	ENGINEER OF PROGRAM DEVELOPMENT

MIXTURE REQUIREMENTS

THE FOLLOWING MIXTURE REQUIREMENTS
ARE APPLICABLE FOR THIS PROJECT

MIXTURE USE(S):	H.M.A. SHLD, TOP 2"	H.M.A. SHLD, LOWER LIFTS
AC/PG	PG 64-22	PG 58-22
DESIGN AIR VOIDS:	4.0% @ N DESIGN = 50	4.0% @ N DESIGN = 50
MIXTURE COMP:	IL 9.5 OR 12.5	IL 19.0
FRICITION AGG:	MIX C	N/A

INDEX/STANDARDS/SIGNATURES
FAI 72 (I 72)
SECTION (84-9)I
SANGAMON COUNTY

S U M M A R Y O F Q U A N T I T I E S

CODE NO.	ITEM	UNIT	100% STATE
			0005
			TOTAL QTY
44200565	CLASS A PATCHES, TYPE II, 11 INCH	SQ YD	178.6
44200569	CLASS A PATCHES, TYPE III, 11 INCH	SQ YD	73.4
44200571	CLASS A PATCHES, TYPE IV, 11 INCH	SQ YD	100.0
44200982	CLASS B PATCHES, TYPE II, 11 INCH	SQ YD	49.8
44200986	CLASS B PATCHES, TYPE III, 11 INCH	SQ YD	17.8
44201299	DOWEL BARS 1 1/2"	EACH	140
44213000	PATCH REINFORCEMENT	SQ YD	352
44213100	PAVEMENT FABRIC	SQ YD	17.8
44213200	SAW CUTS	FOOT	1,996
44213204	TIE BARS 3/4"	EACH	39
67100100	MOBILIZATION	L SUM	1
70100420	TRAFFIC CONTROL AND PROTECTION, STANDARD 701411	EACH	4
70100800	TRAFFIC CONTROL AND PROTECTION, STANDARD 701401	L SUM	1

QUANTITIES
FAI 72 (I 72)
SECTION (84-9)I
SANGAMON COUNTY

S U M M A R Y O F Q U A N T I T I E S

CODE NO.	ITEM	UNIT	100% STATE
			0005
			TOTAL QTY
70100825	TRAFFIC CONTROL AND PROTECTION, STANDARD 701456	L SUM	1
70106800	CHANGEABLE MESSAGE SIGN	CAL MO	1
X4820110	HOT-MIX ASPHALT SHOULDER REMOVAL AND REPLACEMENT (SPECIAL)	SQ YD	150
70200100	NIGHTTIME WORK ZONE LIGHTING	L SUM	1

QUANTITIES
FAI 72 (I 72)
SECTION (84-9)I
SANGAMON COUNTY

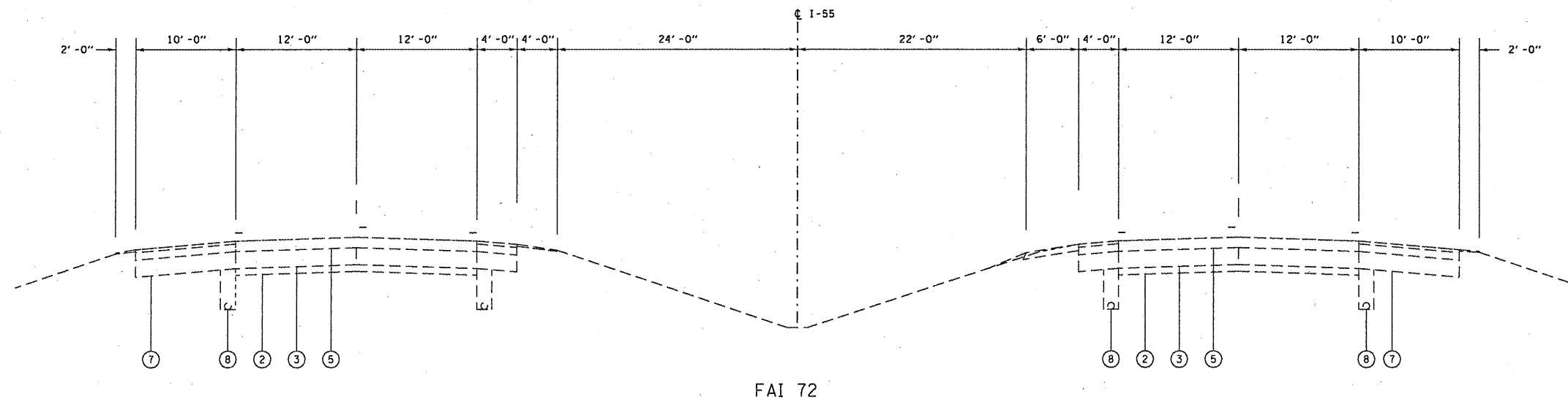


BEGIN
I 72 WORK

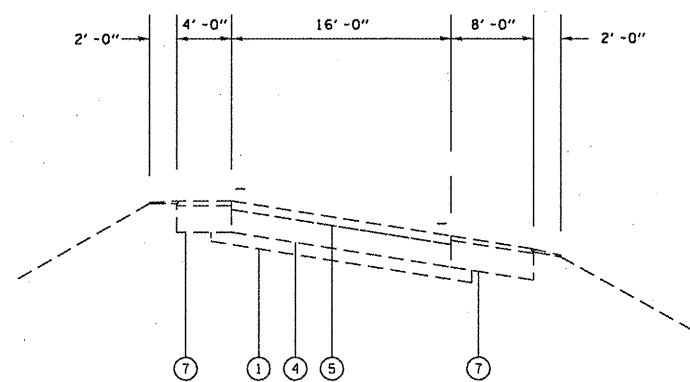
END I 72 WORK

PLAN
FAI 72 (I 72)
SECTION (84-9)I
SANGAMON COUNTY

F.A.I. RTE.	SECTION	COUNTY	TOTAL SHEETS	SHEET NO.
72	84-91	SANGAMON	6	7
STA.		TO STA.		
FED. ROAD DIST. NO.		ILLINOIS FED. AID PROJECT		



FAI 72



RAMPS

LEGEND

- ① EX STABILIZED SUB-BASE 4"
- ② EX AGGREGATE SUB-BASE 4"
- ③ EX PCC PAVEMENT 9"
- ④ EX SRPCC PAVEMENT 8"
- ⑤ EX HOT-MIX ASPHALT SURFACE COURSE (VARIABLE THICKNESS)
- ⑥ EX AGGREGAE SHOULDERS
- ⑦ EX HOT-MIX ASPHALT SHOULDERS
- ⑧ EX PIPE UNDERDRAIN

PLOT DATE = 04-05-2010 08:51:58AM
 FILE NAME = S:\CONTRACTS\84-91\TYPICAL\TYPICAL.DGN
 PLOT SCALE = 1/8"=1'-0"
 USER NAME = shirleyd

REVISIONS	
NAME	DATE

ILLINOIS DEPARTMENT OF TRANSPORTATION

TYPICAL SECTIONS

FAI 72 (I 72)

SECTION (84-91)

SANGAMON COUNTY

SCALE: _____

DATE _____

DRAWN BY _____

CHECKED BY _____

F.A.I. RTE.	SECTION	COUNTY	TOTAL SHEETS	SHEET NO.
72	84-91	SANGAMON	7	7
STA.		TO STA.		
FED. ROAD DIST. NO.		ILLINOIS FED. AID PROJECT		

LOCATION	CLASS A PATCHES					CLASS B PATCHES			CLASS A PATCHES			CLASS B PATCHES			SAW CUTS	TIE BARS EACH	DOWEL BARS EACH	PATCH REINF SQ YD	
	PASS.	CENT.	DRIV.	WIDTH	SQ YD	RAMP	LENGTH(FT)	WIDTH	SQ YD	11 IN	11 IN	11 IN	11 IN	11 IN					11 IN
										TY II	TY III	TY IV	TY II	TY III					TY IV
FAI 72 WEST OF WABASH																			
STA 303+90			10.0	12.0	13.3				13.3						68.0			13.3	
STA 284+95			6.0	12.0	8.0				8.0						60.0			8.0	
STA 258+00			8.0	12.0	10.7				10.7						64.0			10.7	
STA 243+00	14.0			12.0	18.7					18.7					76.0			18.7	
STA 243+00			14.0	12.0	18.7					18.7					76.0			18.7	
STA 232+70			6.0	12.0	8.0				8.0						60.0			8.0	
STA 232+10			8.0	12.0	10.7				10.7						64.0			10.7	
STA 207+65			8.0	12.0	10.7				10.7						64.0			10.7	
STA 206+10			6.0	12.0	8.0				8.0						60.0			8.0	
STA 100+60			25.0	12.0	33.3						33.3				98.0	13		33.3	
STA 31+75			6.0	12.0	8.0				8.0						60.0			8.0	
FAI 72 WEST OF WABASH																			
STA 12+50			50.0	12.0	66.7						66.7				148.0	26		66.7	
STA 16+80			10.0	12.0	13.3				13.3						68.0			13.3	
STA 84+30			10.0	12.0	13.3				13.3						68.0			13.3	
STA 176+40			10.0	12.0	13.3				13.3						68.0			13.3	
STA 178+50			6.0	12.0	8.0				8.0						60.0			8.0	
STA 183+00			6.0	12.0	8.0				8.0						60.0			8.0	
STA 184+30			15.0	12.0	20.0					20.0					78.0			20.0	
STA 206+70			10.0	12.0	13.3				13.3						68.0			13.3	
STA 207+10			12.0	12.0	16.0					16.0					72.0			16.0	
STA 282+90			6.0	12.0	8.0				8.0						60.0			8.0	
STA 382+70			6.0	12.0	8.0				8.0						60.0			8.0	
STA 383+00			6.0	12.0	8.0				8.0						60.0			8.0	
STA 395+30			6.0	12.0	8.0				8.0						60.0			8.0	
FAI 72 RAMPS NEW BERLIN																			
STA 105+80						A	10.0	16.0	17.8				17.8		68.0		28		
STA 209+00						B	8.0	16.0	14.2			14.2			64.0		28		
STA 305+75						C	8.0	16.0	14.2			14.2			64.0		28		
STA 315+00						C	6.0	16.0	10.7			10.7			60.0		28		
STA 410+00						D	6.0	16.0	10.7			10.7			60.0		28		
					352.0				67.6	178.6	73.4	100.0	49.8	17.8	0.0	1996.0	39	140.0	352.0

PLOT DATE = 04-01-2012 08:22:38AM
 FILE NAME = S:\CONTRACTS\CDV72F47\ASCHEDULES.dgn
 PLOT SCALE = 1/8"=1'-0"
 USER NAME = sherpac

REVISIONS	
NAME	DATE

ILLINOIS DEPARTMENT OF TRANSPORTATION
 SCHEDULE
 FAI 72 (I 72)
 SECTION (84-91)
 SANGAMON COUNTY
 SCALE: _____ DRAWN BY _____
 DATE _____ CHECKED BY _____