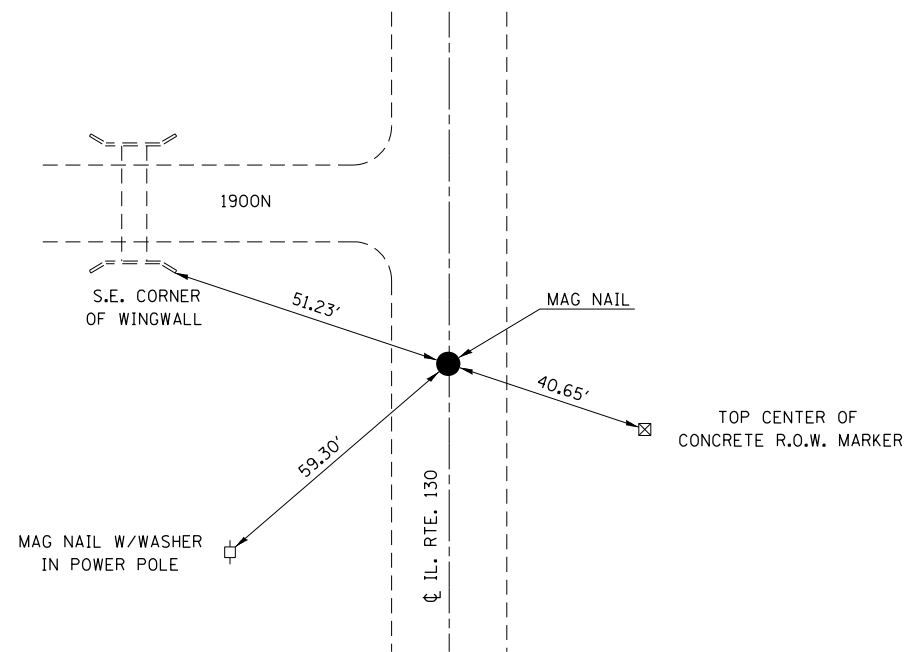
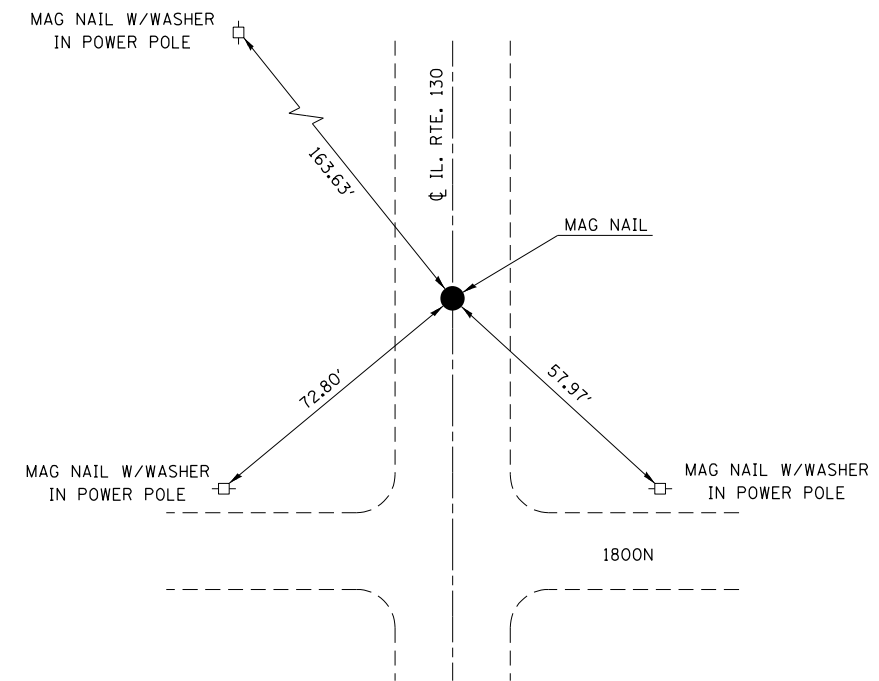


P.O.T. STATION 790+97.45



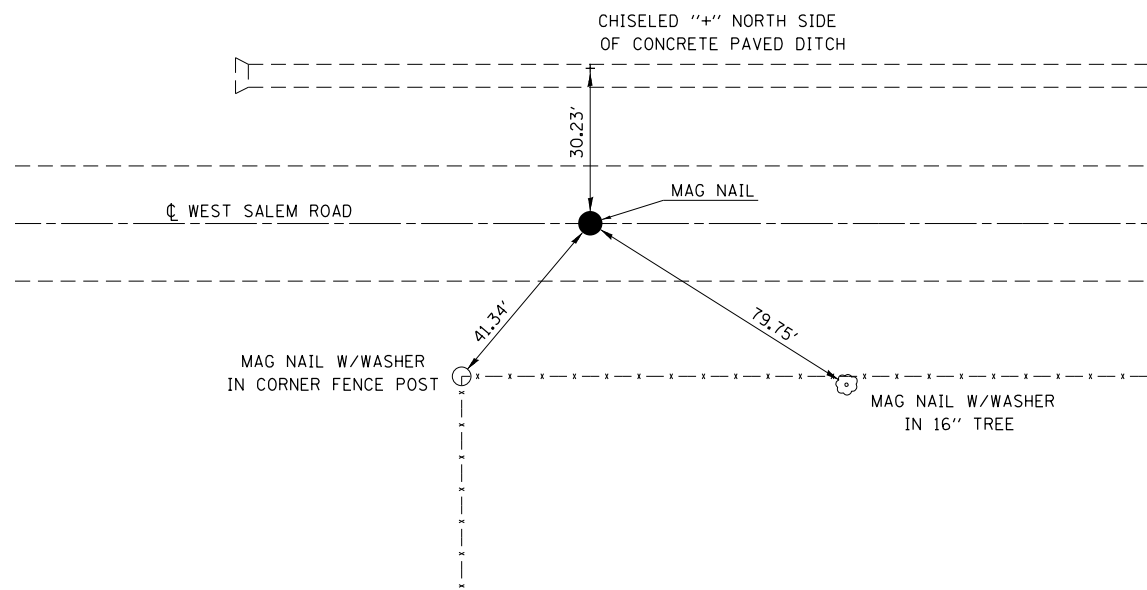
NOTE: NOT DRAWN TO SCALE

P.O.T. STATION 843+03.30



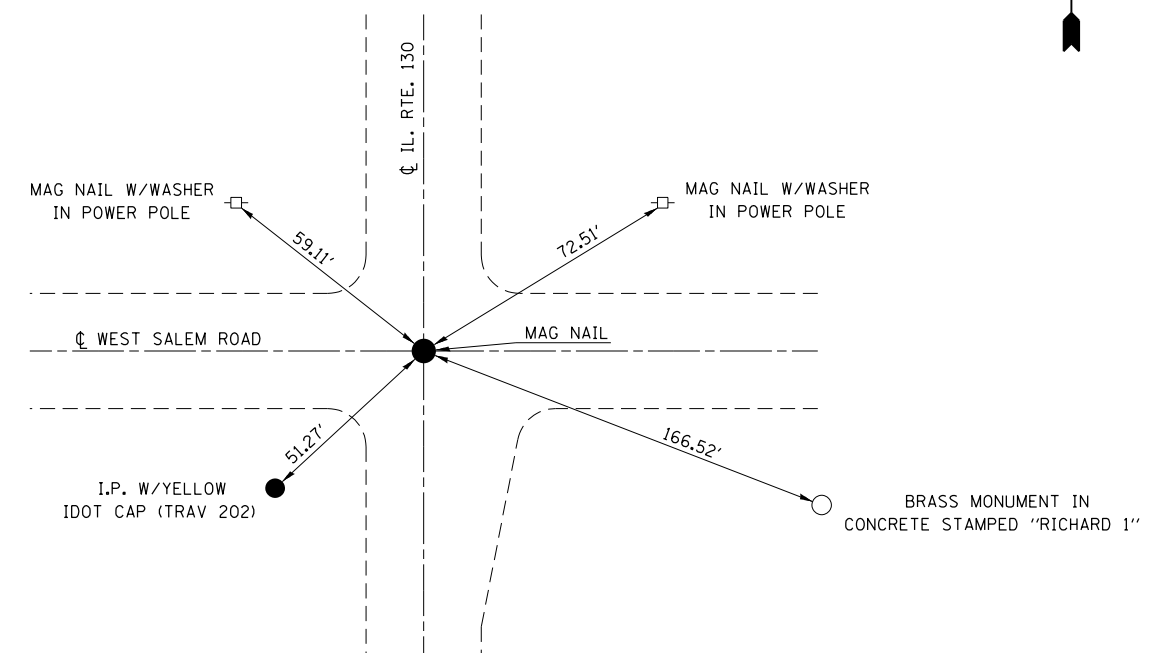
NOTE: NOT DRAWN TO SCALE

P.O.T. STATION 1006+83.71
WEST SALEM ROAD



NOTE: NOT DRAWN TO SCALE

P.I. STATION 1019+91.00 (WEST SALEM ROAD) =
STATION 817+11.50 (IL. RTE. 130) P.O.T.



NOTE: NOT DRAWN TO SCALE

FILE NAME =	USER NAME = steffenmk	DESIGNED -	REVISED -
ct:\pw\work\p\dot\stevfenmk\dms52759\d74247-sht-ties.dgn		DRAWN -	REVISED -
	PLOT SCALE = 100.0000' / 1" =	CHECKED -	REVISED -
	PLOT DATE = 3/23/2012	DATE -	REVISED -

STATE OF ILLINOIS
DEPARTMENT OF TRANSPORTATION

TIE POINTS

SCALE: NA SHEET NO. 1 OF 2 SHEETS STA. TO STA.

F.A.P. RTE.	SECTION	COUNTY	TOTAL SHEETS	SHEET NO.
116	(126,127)RS-5	EDWARDS	51	21
CONTRACT NO. 74247				
ILLINOIS FED. AID PROJECT				