

STATE OF ILLINOIS
DEPARTMENT OF TRANSPORTATION
DIVISION OF HIGHWAYS

**PROPOSED
HIGHWAY PLANS**

FAS ROUTE 659 (CADWELL ROAD)
SECTION D7 SEAL COAT 2013-1

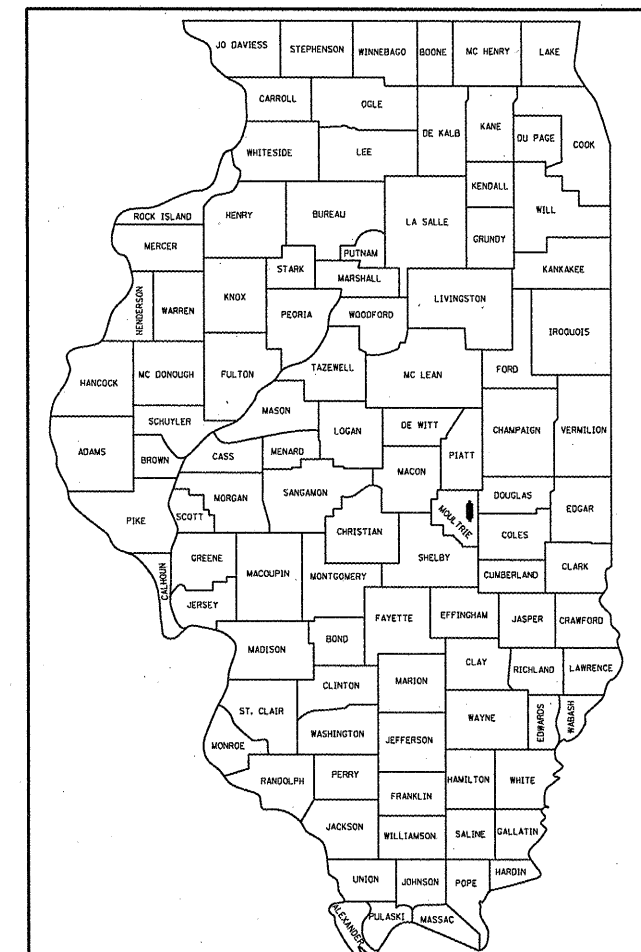
CONTRACT MAINTENANCE SEAL COAT
MOULTRIE COUNTY
C-97-030-12

FOR INDEX OF SHEETS, SEE SHEET NO. 2

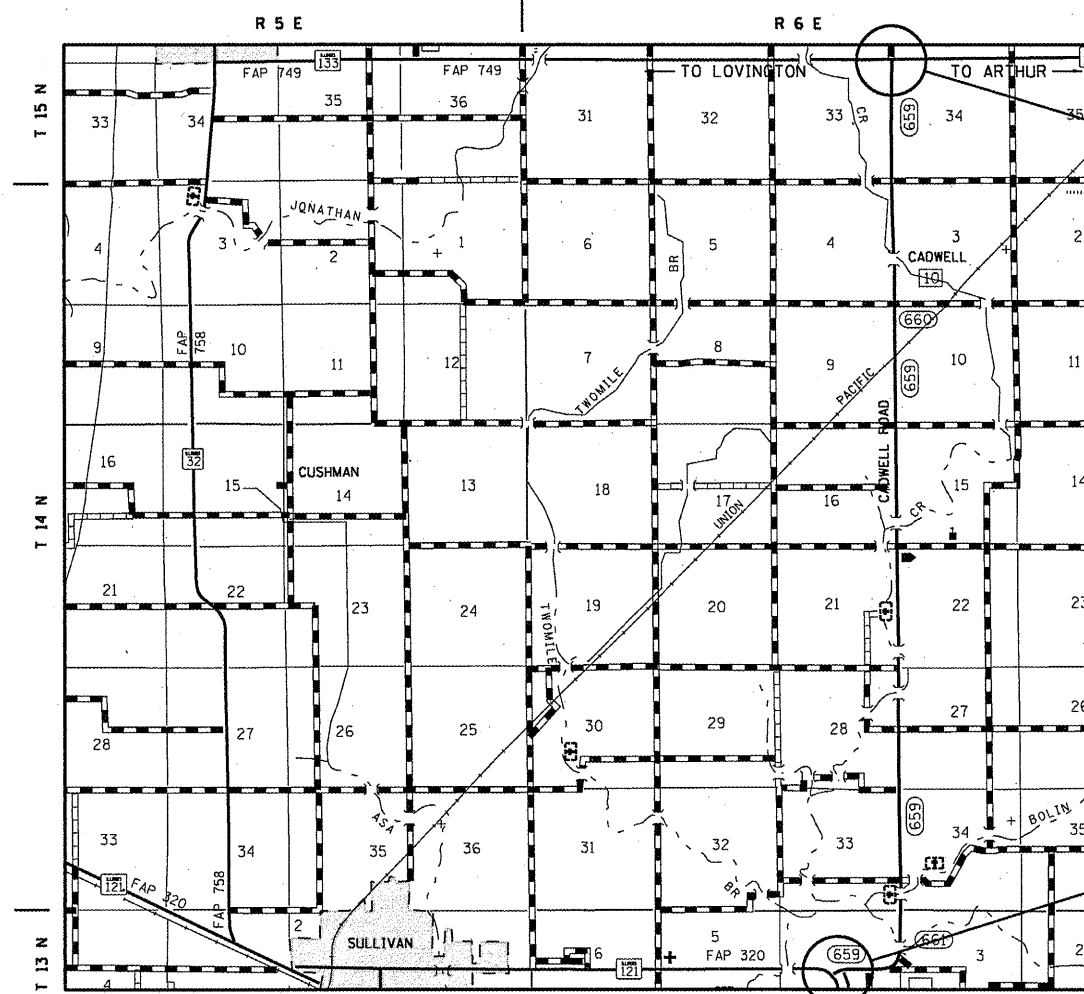
ADT = 2000 (2010)

F.A.S. RTE.	SECTION	COUNTY	TOTAL SHEETS	SHEET NO.
659	D7 SEAL COAT 2013-1	MOULTRIE	8	1
		ILLINOIS	CONTRACT NO. 74558	

D-97-020-12

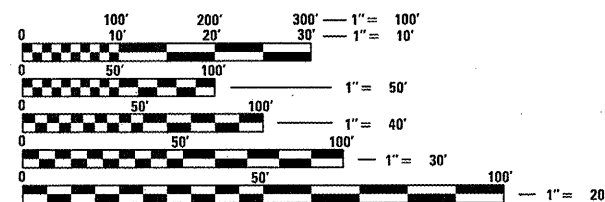


LOCATION OF SECTION INDICATED THIS: — ■ —



SECTION ENDS
STATION 432+13.40

SECTION BEGINS:
STATION 1+29.80



FULL SIZE PLANS HAVE BEEN PREPARED USING STANDARD ENGINEERING SCALES. REDUCED SIZED PLANS WILL NOT CONFORM TO STANDARD SCALES. IN MAKING MEASUREMENTS ON REDUCED PLANS, THE ABOVE SCALES MAY BE USED.

J.U.L.I.E.
JOINT UTILITY LOCATION INFORMATION FOR EXCAVATION
1-800-892-0123
OR 811

PROJECT ENGINEER: TOM RONAN
PROJECT MANAGER: TOM RONAN
PHONE: 217-342-8320
CONTRACT NO. 74558

GROSS LENGTH = 43,083 FT. = 8.16 MILE
NET LENGTH = 42,359 FT. = 8.02 MILE

STATE OF ILLINOIS
DEPARTMENT OF TRANSPORTATION
DIVISION OF HIGHWAYS

SUBMITTED March 20 2012
Raymond L. Duskell, Jr.
DEPUTY DIRECTOR OF HIGHWAYS, REGION ENGINEER

May 11 2012
John D. Bauermann, P.E.
ENGINEER OF DESIGN AND ENVIRONMENT

May 11 2012
William R. Freeman
DIRECTOR OF HIGHWAYS, CHIEF ENGINEER

PRINTED BY THE AUTHORITY
OF THE STATE OF ILLINOIS