

STATE OF ILLINOIS
DEPARTMENT OF TRANSPORTATION
DIVISION OF HIGHWAYS

**PROPOSED
HIGHWAY PLANS**

FAS ROUTE 659 (CADWELL ROAD)
SECTION D7 SEAL COAT 2013-1

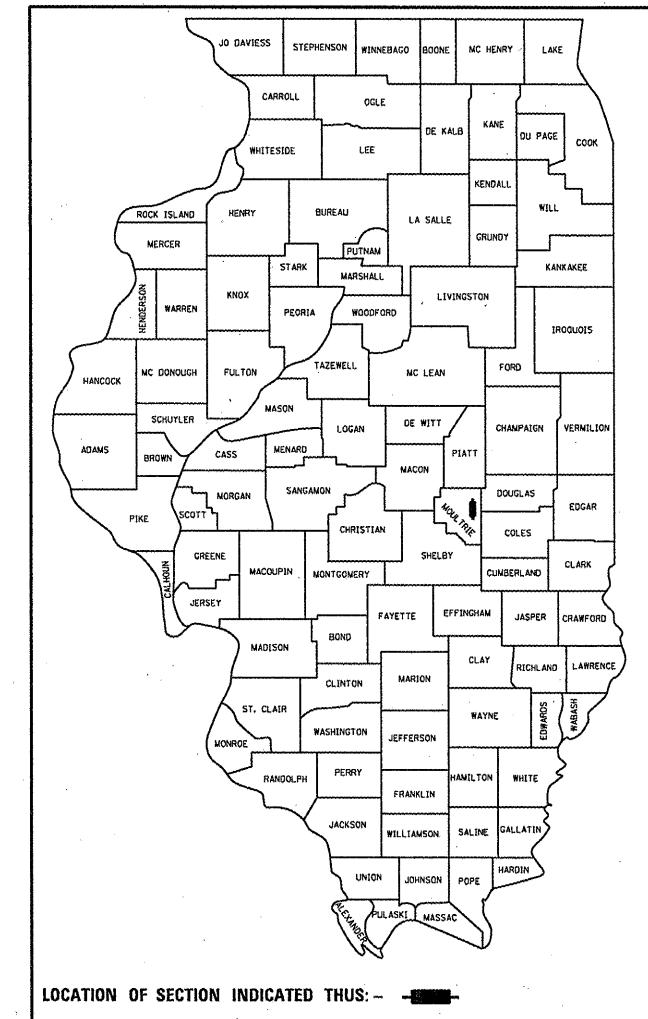
CONTRACT MAINTENANCE SEAL COAT
MOULTRIE COUNTY
C-97-030-12

FOR INDEX OF SHEETS, SEE SHEET NO. 2

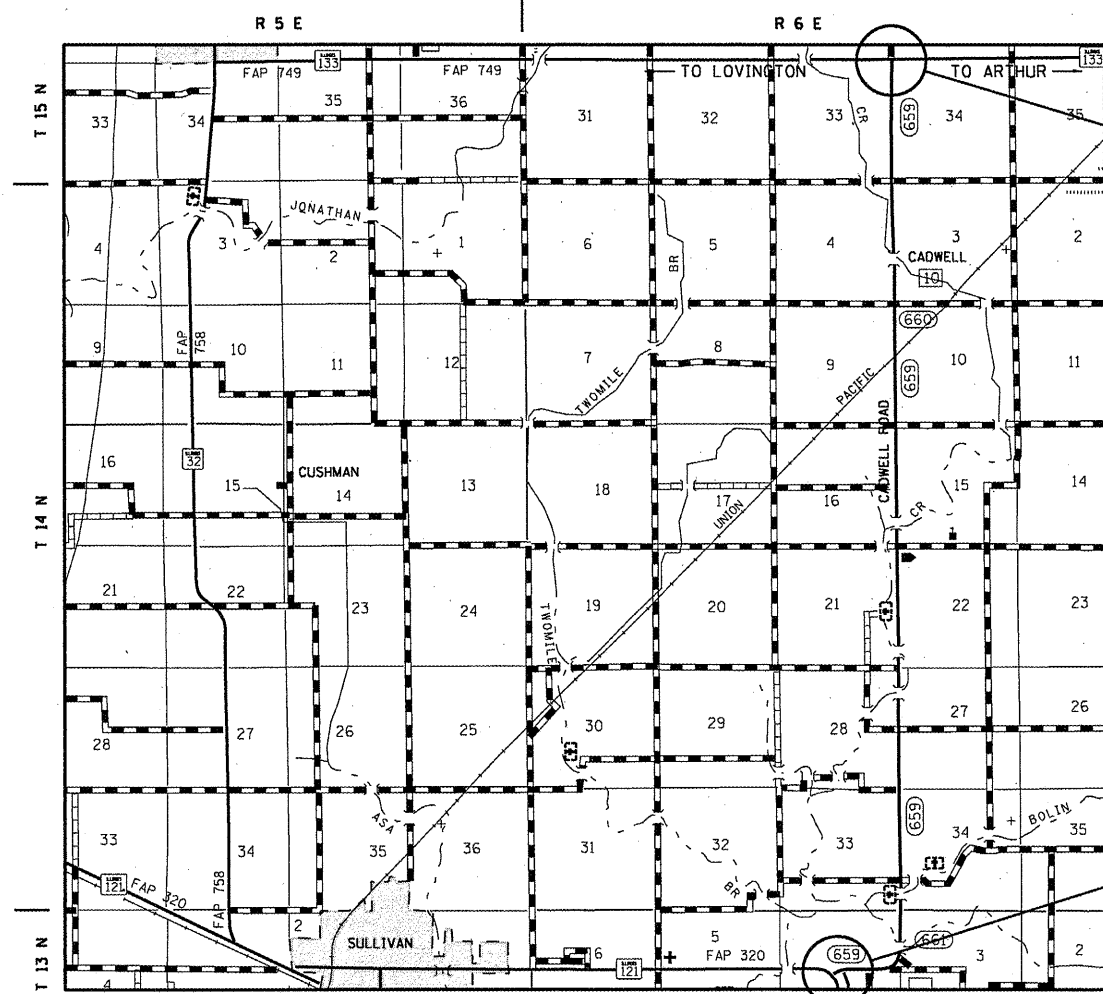
ADT = 2000 (2010)

F.A.S. RTE.	SECTION	COUNTY	TOTAL SHEETS	SHEET NO.
659	D7 SEAL COAT 2013-1	MOULTRIE	8	1
		ILLINOIS	CONTRACT NO. 74558	

D-97-020-12

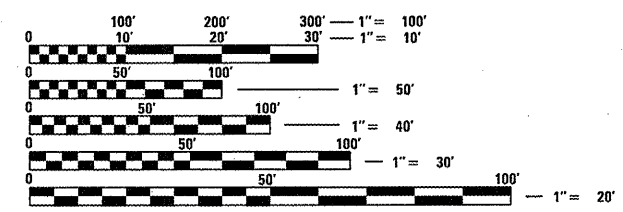


LOCATION OF SECTION INDICATED THUS: —■—



SECTION ENDS
STATION 43+13.40

SECTION BEGINS:
STATION 1+29.80



FULL SIZE PLANS HAVE BEEN PREPARED USING STANDARD ENGINEERING SCALES. REDUCED SIZED PLANS WILL NOT CONFORM TO STANDARD SCALES. IN MAKING MEASUREMENTS ON REDUCED PLANS, THE ABOVE SCALES MAY BE USED.

J.U.L.I.E.
JOINT UTILITY LOCATION INFORMATION FOR EXCAVATION
1-800-892-0123
OR 811

PROJECT ENGINEER: TOM RONAN
PROJECT MANAGER: TOM RONAN
PHONE: 217-342-8320
CONTRACT NO. 74558

GROSS LENGTH = 43,083 FT. = 8.16 MILE
NET LENGTH = 42,359 FT. = 8.02 MILE

STATE OF ILLINOIS
DEPARTMENT OF TRANSPORTATION
DIVISION OF HIGHWAYS

SUBMITTED March 20 2012
Robert L. Driskell
DEPUTY DIRECTOR OF HIGHWAYS, REGION ENGINEER

May 11 2012
John D. Bauermann P.E.
ENGINEER OF DESIGN AND ENVIRONMENT

May 11 2012
William R. Frey
DIRECTOR OF HIGHWAYS, CHIEF ENGINEER

PRINTED BY THE AUTHORITY
OF THE STATE OF ILLINOIS

INDEX OF SHEETS

SHEET NO.	DESCRIPTION
1	TITLE SHEET
2	INDEX OF SHEETS, GENERAL NOTES, SUMMARY OF QUANTITIES
3	SCHEDULES OF QUANTITIES
4	LOCATION MAP
5-8	PAVEMENT MARKING DETAILS

THE FOLLOWING STANDARDS ARE A PART OF THESE PLANS AND ARE INCLUDED AFTER SHEET NO. 8.

STANDARD 701001-02
 STANDARD 701006-03
 STANDARD 701011-02
 STANDARD 701301-04
 STANDARD 701306-03
 STANDARD 701901-02

GENERAL NOTES

THIS SECTION SHALL BE CONSTRUCTED IN ACCORDANCE WITH THE PLANS; THE "STANDARD SPECIFICATIONS FOR ROAD AND BRIDGE CONSTRUCTION" ADOPTED JANUARY 1, 2012; THE "SUPPLEMENTAL SPECIFICATIONS AND RECURRING SPECIAL PROVISIONS" INDICATED ON THE CHECK SHEET, AND "THE SPECIAL PROVISIONS" INCLUDED IN THIS PROPOSAL.

THE PROPOSED WORK IS LOCATED ON CADWELL ROAD FROM ILLINOIS ROUTE 121 NORTH TO ILLINOIS ROUTE 133 IN MOULTRIE COUNTY. IT IS THE INTENT OF THE DEPARTMENT THAT THE SURFACE TREATMENT EXTEND 6" ONTO THE SHOULDERS TO HELP SEAL THE CONSTRUCTION JOINT BETWEEN THE PAVEMENT AND SHOULDERS.

THE WORK IN THIS SECTION CONSISTS OF CONSTRUCTION OF SEAL COAT FOR BITUMINOUS SURFACE TREATMENT CLASS A-1, PAVEMENT MARKING, AND ANY OTHER WORK NECESSARY TO COMPLETE THIS SECTION PER THE PLANS AND STANDARD SPECIFICATIONS.

THE MATERIAL USED FOR SEAL COAT AGGREGATE SHALL BE CA-16 CRUSHED STONE.

TEMPORARY PAINT PAVEMENT MARKING LINE - 4" SHALL BE APPLIED TO THE AREAS WHICH HAVE BEEN COVERED WITH BITUMINOUS SURFACE TREATMENT AT THE END OF EACH WORK DAY. THE SHORT TERM PAVEMENT MARKING SHALL BE PAINT. THE SHORT TERM PAVEMENT MARKING SHALL BE SPACED SO THAT IT WILL BE COVERED BY THE PAINT PAVEMENT MARKING - LINE 4".

RAISED REFLECTIVE PAVEMENT MARKERS AND SURVEY MONUMENT VAULTS SHALL BE KEPT FREE OF THE SEAL COAT. THEY SHALL BE PROTECTED BY COVERING THEM WITH TAPE. THE COST TO COVER THE RAISED REFLECTIVE PAVEMENT MARKERS AND SURVEY MONUMENT VAULTS WILL BE INCLUDED IN THE COST OF THE BITUMINOUS MATERIALS (COVER AND SEAL COAT) AND NO ADDITIONAL COMPENSATION WILL BE ALLOWED. REMOVING THE TAPE AFTER COMPLETING THE SEAL COAT IS ALSO INCLUDED IN THE COST OF THE BITUMINOUS MATERIALS (COVER AND SEAL COAT) AND NO ADDITIONAL COMPENSATION WILL BE ALLOWED.

100% STATE

SUMMARY OF QUANTITIES

CODE NO	ITEM	UNIT	TOTAL QUANTITIES	CONSTRUCTION TYPE CODE		
				0005		
40300300	BITUMINOUS MATERIALS (COVER AND SEAL COATS)	GALLON	41642	41642		
40300600	SEAL COAT AGGREGATE	TON	1487	1487		
67100100	MOBILIZATION	L SUM	1	1		
70100460	TRAFFIC CONTROL AND PROTECTION, STANDARD 701306	L SUM	1	1		
70300100	SHORT TERM PAVEMENT MARKING	FOOT	4256	4256		
70301000	WORK ZONE PAVEMENT MARKING REMOVAL	SQ FT	355	355		
X 78000100	THERMOPLASTIC PAVEMENT MARKING - LETTERS AND SYMBOLS	SQ FT	114	114		
X 78000200	THERMOPLASTIC PAVEMENT MARKING - LINE 4"	FOOT	1974	1974		
X 78000600	THERMOPLASTIC PAVEMENT MARKING - LINE 12"	FOOT	271	271		
X 78000650	THERMOPLASTIC PAVEMENT MARKING - LINE 24"	FOOT	141	141		
X 78001110	PAINT PAVEMENT MARKING - LINE 4"	FOOT	104116	104116		

FILE NAME =	USER NAME = swartzw	DESIGNED -	REVISED -
c:\pwwork\p1dos\swartzw\d0285365\077	558-shr-index.dgn	DRAWN -	REVISED -
	PLOT SCALE = 100.0000' / in.	CHECKED -	REVISED -
	PLOT DATE = 3/14/2012	DATE -	REVISED -

**STATE OF ILLINOIS
DEPARTMENT OF TRANSPORTATION**

**INDEX OF SHEETS, GENERAL NOTES
AND SUMMARY OF QUANTITIES**

SCALE: NA SHEET NO. 1 OF 1 SHEETS STA. TO STA.

F.A.S. RTE.	SECTION	COUNTY	TOTAL SHEETS	SHEET NO.
659	D7 SEAL COAT 2013-1	MOULTRIE	8	2
				CONTRACT NO. 74558
ILLINOIS FED. AID PROJECT				

PAVING SCHEDULE

LOCATION		LENGTH	AVERAGE PAVEMENT WIDTH	AREA	BITUMINOUS MATERIALS (COVER AND SEAL COATS)		SEAL COAT AGGREGATE
STATION	TO STATION	FOOT	FOOT	SO YD	GALLON	TON	
1+29.00	TO 7+67.62	638.6	VAR	2866.7	1003.3	35.8	
7+67.62	TO 27+71.62	2004.0	24.0	5566.7	1948.3	69.6	
27+71.62	TO 43+51.04	1579.4	26.0	4738.3	1658.4	59.2	
43+51.04	TO 44+60.18	109.1	24.0	303.2	106.1	3.8	
44+60.18	TO 45+77.72	117.5	BRIDGE OMISSION				
45+77.72	TO 66+46.45	2068.7	24.0	5746.5	2011.3	71.8	
66+46.45	TO 67+56.21	109.8	BRIDGE OMISSION				
67+56.21	TO 154+16.12	8659.9	24.0	24055.3	8419.4	300.7	
154+16.12	TO 155+33.66	117.5	BRIDGE OMISSION				
155+33.66	TO 172+71.41	1737.8	24.0	4827.1	1689.5	60.3	
172+71.41	TO 174+51.72	180.3	BRIDGE OMISSION				
174+51.72	TO 227+31.10	5279.4	24.0	14664.9	5132.7	183.3	
227+31.10	TO 228+36.74	105.6	BRIDGE OMISSION				
228+36.74	TO 302+42.96	7406.2	24.0	20572.8	7200.5	257.2	
302+42.96	TO 302+56.05	13.1	RR OMISSION				
302+56.05	TO 430+85.00	12829.0	24.0	35636.0	12472.6	445.4	
TOTALS		42956		118977	41642	1487	

PAVEMENT MARKING SCHEDULE

STATION TO STATION	LENGTH	PAINT PAVEMENT MARKING - LINE 4"	THERMOPLASTIC PAVEMENT MARKING - LINE 4"	THERMOPLASTIC PAVEMENT MARKING - LINE 12"	THERMOPLASTIC PAVEMENT MARKING - LINE 24"	THERMOPLASTIC PAVEMENT MARKING - LETTERS & SYMBOLS	SHORT-TERM PAVEMENT MARKING	WORK ZONE PAVEMENT MARKING REMOVAL
	FOOT	FOOT	FOOT	FOOT	FOOT	SO FT	FOOT	SO FT
1+29.00 TO 5+33.00	404	875	1974	271	45		40	3.3
5+33.00 TO 11+57.00	624	2416					64	5.3
11+57.00 TO 20+06.00	849	1780					84	7.0
20+06.00 TO 31+93.00	1187	3858					120	10.0
31+93.00 TO 37+95.00	602	2408					60	5.0
37+95.00 TO 49+26.00	1131	3623					112	9.3
49+26.00 TO 51+31.00	205	461					20	1.7
51+31.00 TO 61+41.00	1010	3183					100	8.3
61+41.00 TO 62+57.00	116	205					12	1.0
62+57.00 TO 70+30.00	773	2392					76	6.3
70+30.00 TO 226+23.00	15593	35029					1560	130.0
226+23.00 TO 233+55.00	732	2239					72	6.0
233+55.00 TO 235+61.00	206	464					20	1.7
235+61.00 TO 242+68.00	707	2148					72	6.0
242+68.00 TO 297+80.00	5512	12402					552	46.0
297+80.00 TO 302+43.00	463	1505			48	57	48	4.0
302+43.00 TO 302+56.00	13	0					0	0.0
302+56.00 TO 306+40.00	384	1248			48	57	0	0.0
306+40.00 TO 430+85.00	12445	27881					1244	103.7
TOTALS		104116	1974	271	141	114	4256	354.6

LOCATION MAP
 FAS 659 (CADWELL ROAD)
 FROM IL RTE 121 TO IL RTE 133
 MOULTRIE COUNTY



SECTION ENDS
 STATION 432+13.40

R. R. OMISSION:
 STATION 302+42.88
 TO STATION 302+56.05

BRIDGE OMISSION:
 STATION 227+31.10
 TO STATION 228+36.74

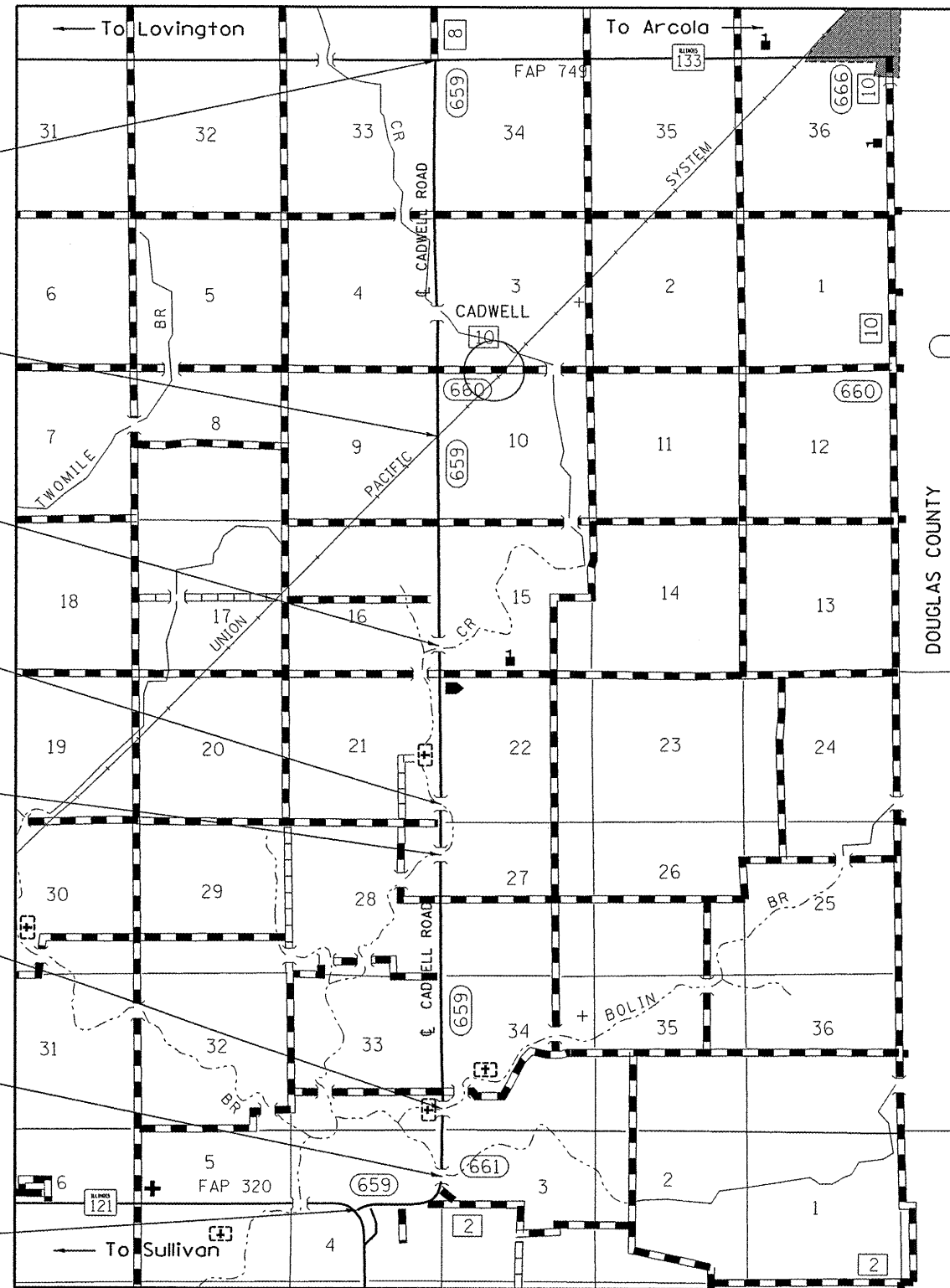
BRIDGE OMISSION:
 STATION 172+71.41
 TO STATION 174+51.72

BRIDGE OMISSION:
 STATION 154+16.12
 TO STATION 156+33.88

BRIDGE OMISSION:
 STATION 86+46.45
 TO STATION 87+56.21

BRIDGE OMISSION:
 STATION 44+80.18
 TO STATION 45+77.72

SECTION BEGINS:
 STATION 1+29.80



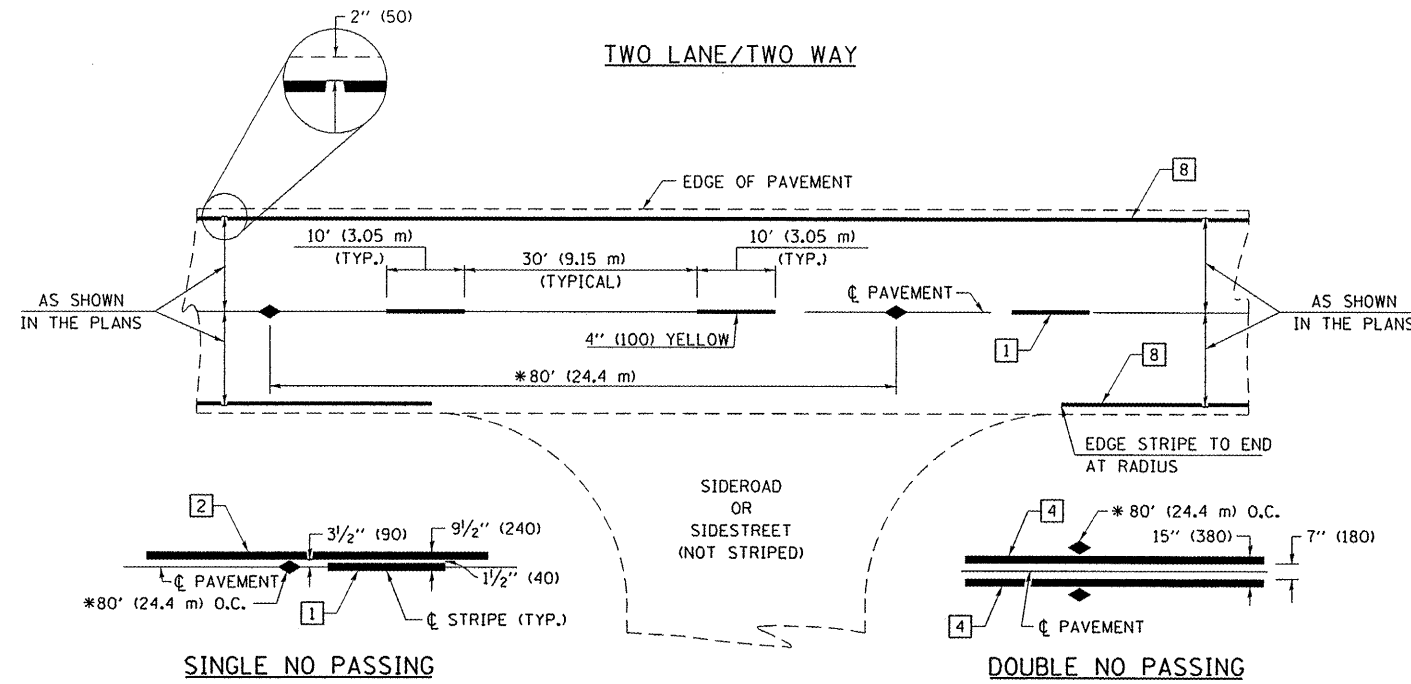
FILE NAME = c:\pwwork\pwwork\swartzw\0285365\077	USER NAME = swartzw 958-sht-locationmap.dgn	DESIGNED -	REVISED -
	PLOT SCALE = 100.0000' / in.	DRAWN -	REVISED -
	PLOT DATE = 3/14/2012	CHECKED -	REVISED -
		DATE -	REVISED -

STATE OF ILLINOIS
DEPARTMENT OF TRANSPORTATION

LOCATION MAP
CADWELL ROAD

SCALE: NA SHEET NO. 1 OF 1 SHEETS STA. TO STA.

F.A.S. RTE.	SECTION	COUNTY	TOTAL SHEETS	SHEET NO.
659	D7 SEAL COAT 2013-1	MOULTRIE	8	4
CONTRACT NO. 74558				
ILLINOIS FED. AID PROJECT				



PAVEMENT MARKING LEGEND

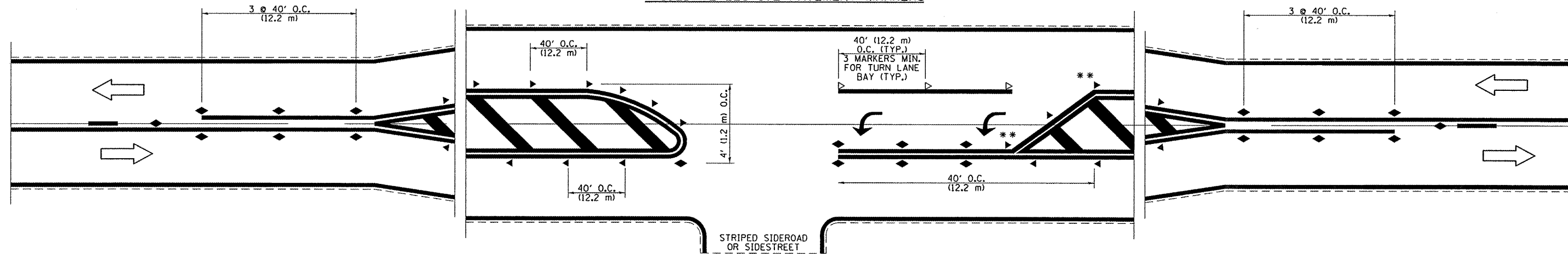
- 1 4" (100) SKIP-DASH (YELLOW)
- 2 4" (100) SOLID (YELLOW)
- 3 12" (300) DIAGONAL (YELLOW)
- 4 4" (100) DOUBLE YELLOW (NARROW)
- 5 RESERVED
- 6 RESERVED
- 7 6" (150) SKIP-DASH (WHITE)
- 8 4" (100) SOLID (WHITE)
- 9 12" (300) DIAGONAL (WHITE)
- 10 6" (150) SOLID (WHITE)
- 11 24" (600) STOP BAR (WHITE)
- 12 8" (200) SOLID (WHITE)
- 13 4" (100) PARKING WHITE

TYPICAL PAVEMENT MARKERS LEGEND

- ◆ TWO-WAY AMBER MARKER
- ▶ ONE-WAY AMBER MARKER
- ▷ ONE-WAY CRYSTAL MARKER

* REDUCE TO 40' (12.2 m) O.C. ON CURVES WITH POSTED OR ADVISORY SPEEDS OF 45 mph (70 km/h) OR LESS.

RAISED REFLECTIVE PAVEMENT MARKERS



** REDUCE SPACING IF NECESSARY TO ASSURE MARKERS AT CORNER POINTS.

NOT TO SCALE
Note: All dimensions are in INCHES (millimeters) unless otherwise shown.

FILE NAME =	USER NAME = swartzw	DESIGNED -	REVISED -
c:\pwwork\p\p\dot\swartzw\d0285365\077	558-sh1-details.dgn	DRAWN -	REVISED -
	PLOT SCALE = 100.0000 "/td> <td>CHECKED -</td> <td>REVISED -</td>	CHECKED -	REVISED -
	PLOT DATE = 3/14/2012	DATE -	REVISED -

STATE OF ILLINOIS
DEPARTMENT OF TRANSPORTATION

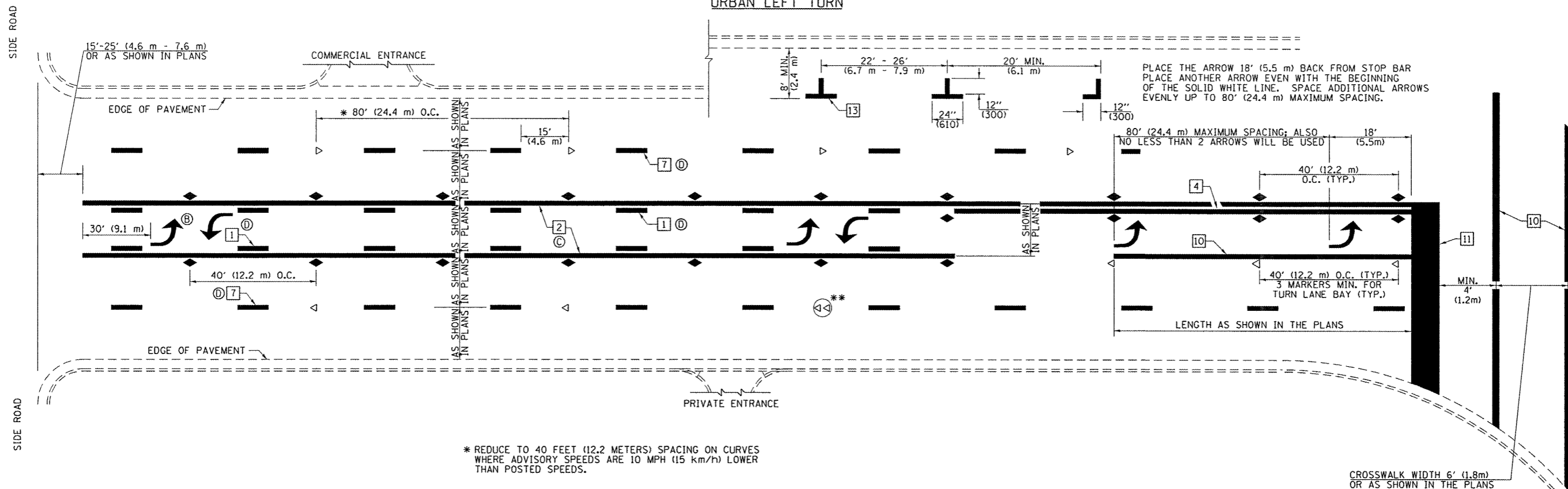
PAVEMENT MARKING AND RAISED REFLECTIVE PAVEMENT MARKERS
(RURAL & URBAN APPLICATIONS)

SCALE: NA SHEET NO. 1 OF 4 SHEETS STA. TO STA.

DISTRICT 7 DETAIL NO. 78000001

F.A.S. RTE.	SECTION	COUNTY	TOTAL SHEETS	SHEET NO.
659	D7 SEAL COAT 2013-1	MOULTRIE	8	5
			CONTRACT NO. 74558	
[ILLINOIS] FED. AID PROJECT				

URBAN LEFT TURN

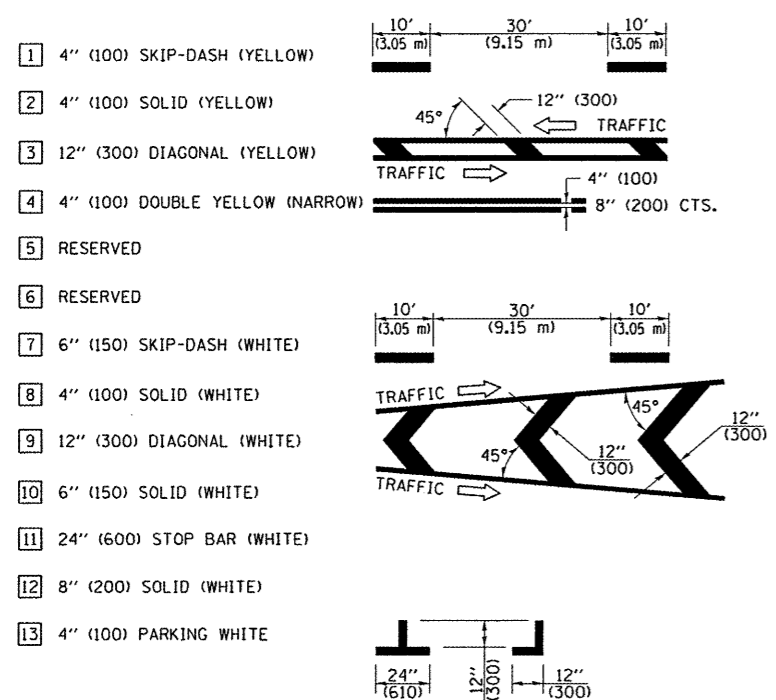


PLACE THE ARROW 18' (5.5 m) BACK FROM STOP BAR
PLACE ANOTHER ARROW EVEN WITH THE BEGINNING
OF THE SOLID WHITE LINE. SPACE ADDITIONAL ARROWS
EVENLY UP TO 80' (24.4 m) MAXIMUM SPACING.

* REDUCE TO 40 FEET (12.2 METERS) SPACING ON CURVES
WHERE ADVISORY SPEEDS ARE 10 MPH (15 km/h) LOWER
THAN POSTED SPEEDS.

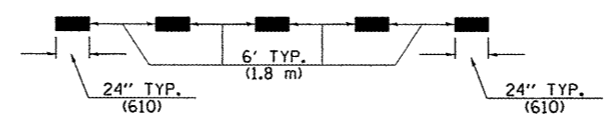
** DOUBLE LANE LINE MARKERS SHALL BE SPECIFIED
AND SPACED AS SHOWN IN HIGHWAY STANDARD
781001 FOR MULTI-LANE DIVIDED AND UNDIVIDED
HIGHWAYS.

PAVEMENT MARKING LEGEND

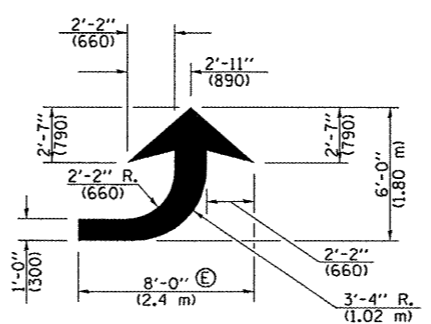


GENERAL NOTES

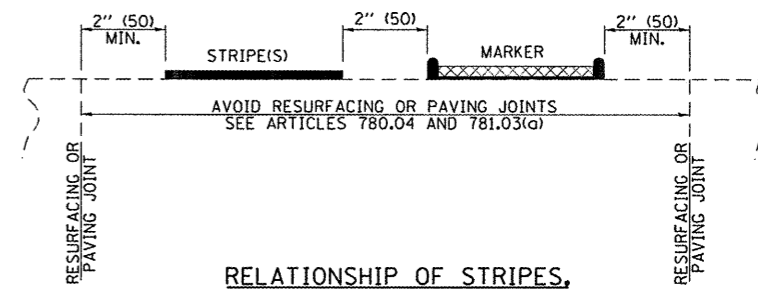
- TURN ARROW PAIRS SHALL BE PLACED AT 250' (75 m) INTERVALS AND SHALL BE EVENLY SPACED BETWEEN BOTH ENDS OF THE BIDIRECTIONAL LEFT TURN LANE. USE A MINIMUM OF TWO PAIRS PER BLOCK.
- THE SOLID YELLOW PAVEMENT MARKINGS [2] SHOULD GENERALLY START OR END NEAR THE RADIUS POINT OF EACH STREET RETURN EXCEPT WHERE ONE OR BOTH ENDS WOULD INCLUDE STOP BARS.
- THE SKIP-DASH PAVEMENT MARKINGS [1] OR [7] SHOULD BE CENTERED BETWEEN BOTH ENDS OF EACH CITY BLOCK AND SHALL BE PLACED SO THEY LINE UP ACROSS FROM EACH OTHER.
- USE LARGE ARROW SIZE FOR BOTH RURAL AND URBAN LOCATIONS. (SEE LAST PAGE OF SECTION 780x FOR SYMBOLS TABLE)
- LANE LINE EXTENSIONS SHALL BE THE SAME COLOR AND WIDTH AS THE LANE LINE BEING EXTENDED.



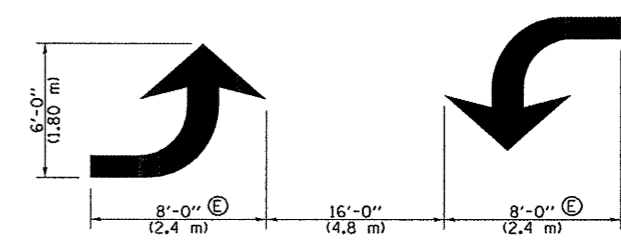
LANE LINE EXTENSIONS



LEFT ARROW
REVERSE FOR RIGHT ARROW
AREA = 15.6 SQ. FT. (1.47 m²)
(WHITE)



RELATIONSHIP OF STRIPES,
MARKERS AND JOINTS



TYPICAL DOUBLE
TURN ARROWS (WHITE)

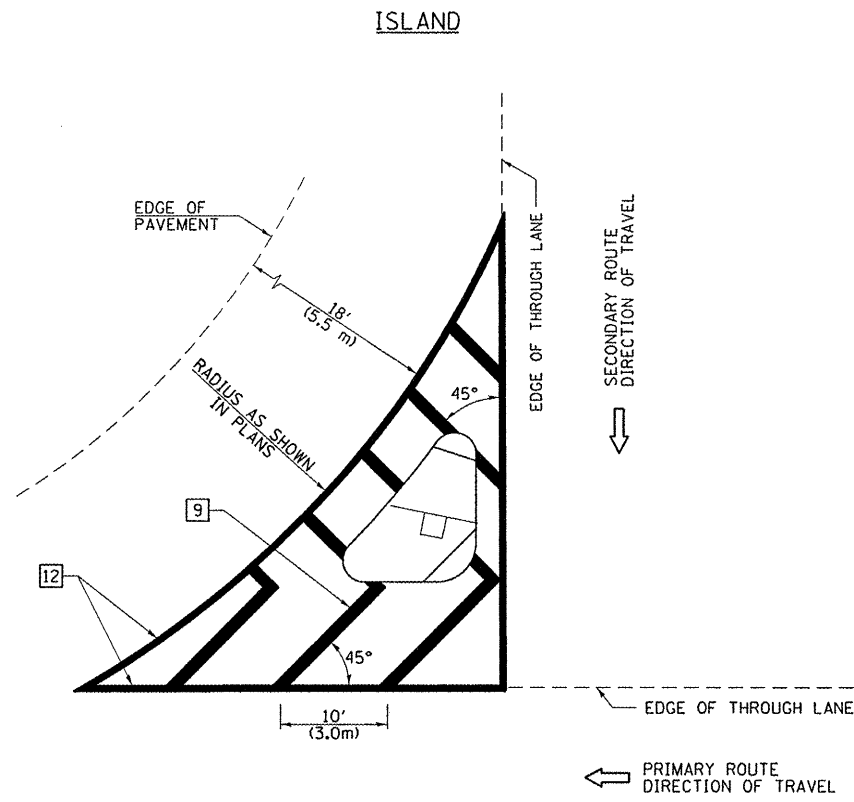
NOT TO SCALE
Note: All dimensions are in INCHES
(millimeters) unless otherwise shown.

FILE NAME =	USER NAME = swartzrw	DESIGNED -	REVISED -
ci:\pav\work\pvidot\swartzrw\d0285365\077	558-shr-details.dgn	DRAWN -	REVISED -
	PLOT SCALE = 100.0000 "/td> <td>CHECKED -</td> <td>REVISED -</td>	CHECKED -	REVISED -
	PLOT DATE = 3/14/2012	DATE -	REVISED -

STATE OF ILLINOIS
DEPARTMENT OF TRANSPORTATION

PAVEMENT MARKING AND RAISED REFLECTIVE PAVEMENT MARKERS
(RURAL & URBAN APPLICATIONS)
SCALE: NA SHEET NO. 2 OF 4 SHEETS STA. TO STA.

DISTRICT 7 DETAIL NO. 7800001			
F.A.S. RTE.	SECTION	COUNTY	TOTAL SHEETS
659	D7 SEAL COAT 2013-1	MOULTRIE	8
			SHEET NO. 6
CONTRACT NO. 74558			
ILLINOIS FED. AID PROJECT			

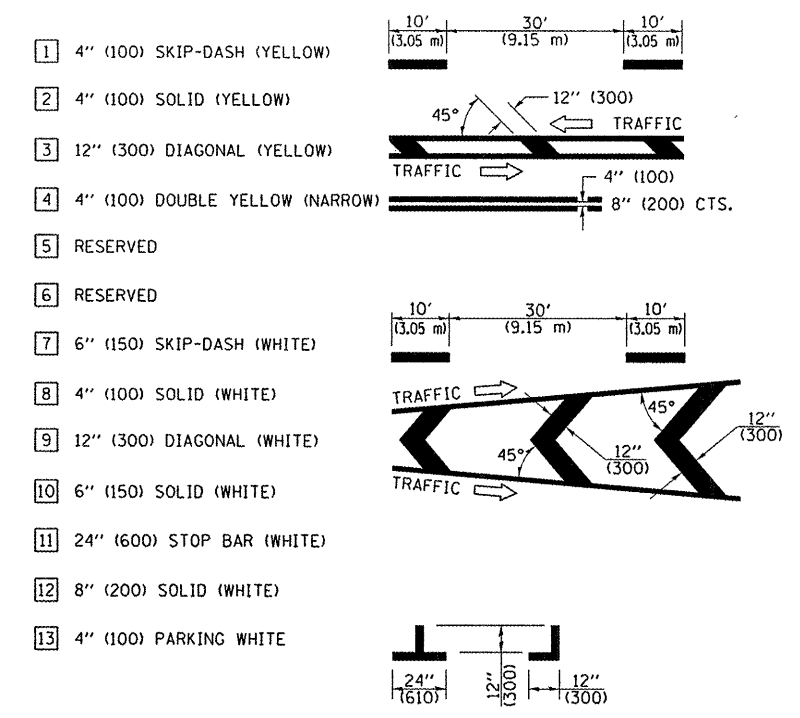


GENERAL NOTES

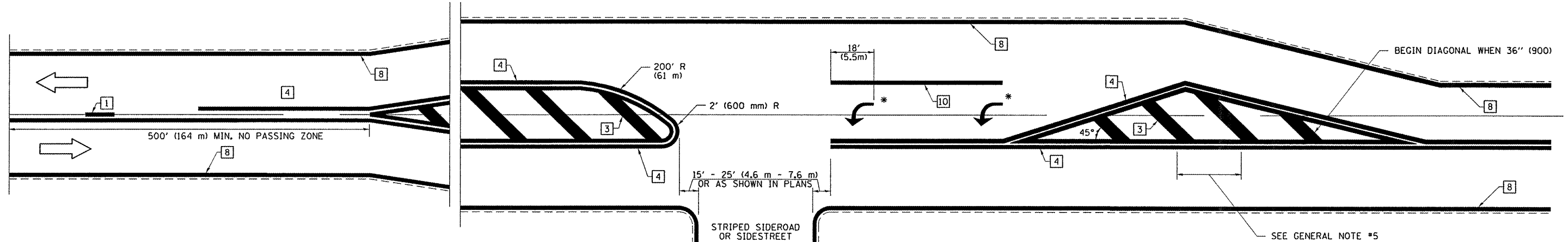
1. RAISED AND CORRUGATED MEDIANS SHALL BE OUTLINED WITH [2] IF PRESENT.
2. SOME OF THE INFORMATION INCLUDED WITH THIS DETAIL MAY NOT BE APPLICABLE TO THIS IMPROVEMENT.
3. PAVEMENT MARKINGS ARE TO BE EXTENDED THROUGH OMISSIONS WHEN APPLICABLE.
4. FINAL PAVEMENT MARKINGS SHALL BE IN PLACE PRIOR TO PLACING ANY RAISED REFLECTIVE PAVEMENT MARKERS.
5. THE FOLLOWING CRITERIA SHALL BE USED FOR SELECTING THE DIAGONAL PAVEMENT MARKING SPACING:

< 30 MPH (< 50 km/h)	15' (4.5 m)
30-45 MPH (50-75 km/h)	20' (6.0 m)
> 45 MPH (> 75 km/h)	30' (9.0 m)

PAVEMENT MARKING LEGEND



RURAL LEFT TURN STRIPING



* PLACE AN ARROW 18' (5.5 m) BACK FROM STOP BAR. PLACE ANOTHER ARROW EVEN WITH THE BEGINNING OF THE SOLID WHITE LINE. SPACE ADDITIONAL ARROWS EVENLY UP TO 80' (24.4 m) MAXIMUM SPACING. USE MINIMUM OF 2 ARROWS.

NOT TO SCALE
Note: All dimensions are in INCHES (millimeters) unless otherwise shown.

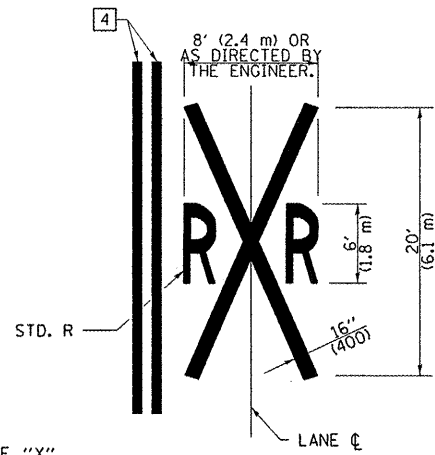
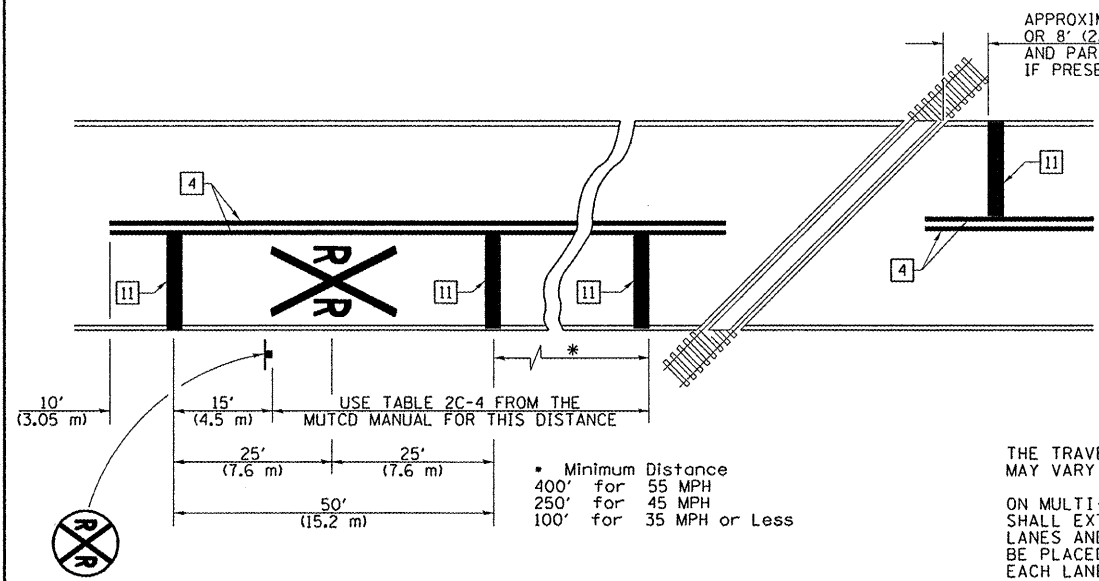
FILE NAME =	USER NAME = swartzw	DESIGNED -	REVISED -
c:\pwwork\puidot\swartzw\d0285365\1077	558-shr-details.dgn	DRAWN -	REVISED -
	PLOT SCALE = 100.0000' / 1"	CHECKED -	REVISED -
	PLOT DATE = 3/14/2012	DATE -	REVISED -

STATE OF ILLINOIS
DEPARTMENT OF TRANSPORTATION

PAVEMENT MARKING AND RAISED REFLECTIVE PAVEMENT MARKERS
(RURAL & URBAN APPLICATIONS)
SCALE: NA SHEET NO. 3 OF 4 SHEETS STA. TO STA.

DISTRICT 7 DETAIL NO. 78000001				
F.A.S. RTE.	SECTION	COUNTY	TOTAL SHEETS	SHEET NO.
659	D7 SEAL COAT 2013-1	MOULTRIE	8	7
			CONTRACT NO. 74558	
ILLINOIS FED. AID PROJECT				

PAVEMENT MARKINGS AT RAILROAD-HIGHWAY GRADE CROSSING



NOTES

THE TRAVERSE SPREAD OF THE "X" MAY VARY ACCORDING TO LANE WIDTH.

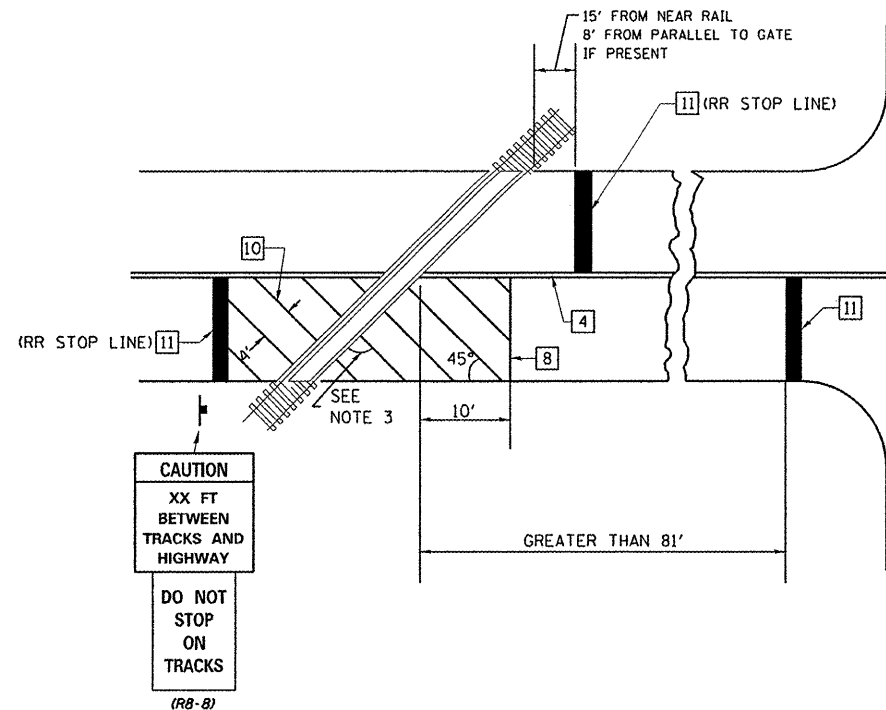
ON MULTI-LANE ROADS, THE STOP LINES SHALL EXTEND ACROSS ALL APPROACH LINES AND SEPARATE R X R SYMBOLS SHALL BE PLACED ADJACENT TO EACH OTHER IN EACH LANE.

WHEN THE PAVEMENT MARKING SYMBOL IS USED, A PORTION OF THE SYMBOL SHOULD BE LOCATED DIRECTLY ADJACENT TO THE ADVANCE WARNING SIGN (W10-1) AS PLACED BY TABLE II-1, CONDITION B OF THE MUTCD.

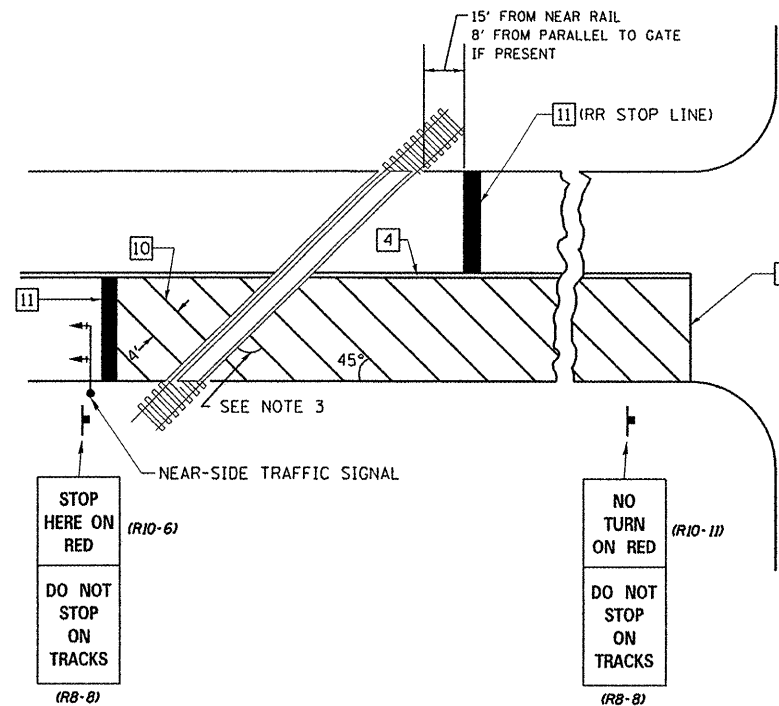
PAVEMENT MARKING LEGEND

- 1 4" (100) SKIP-DASH (YELLOW)
 - 2 4" (100) SOLID (YELLOW)
 - 3 12" (300) DIAGONAL (YELLOW)
 - 4 4" (100) DOUBLE YELLOW (NARROW)
 - 5 RESERVED
 - 6 RESERVED
 - 7 6" (150) SKIP-DASH (WHITE)
 - 8 4" (100) SOLID (WHITE)
 - 9 12" (300) DIAGONAL (WHITE)
 - 10 6" (150) SOLID (WHITE)
 - 11 24" (600) STOP BAR (WHITE)
 - 12 8" (200) SOLID (WHITE)
 - 13 4" (100) PARKING WHITE
-

RAILROAD CROSSING WITH INTERCONNECT ONLY



RAILROAD CROSSING WITH INTERCONNECT AND PRE-SIGNALS



GENERAL NOTES

1. SUPPLEMENTAL PAVEMENT MARKINGS TO BE INSTALLED ONLY ON APPROACHES TO INTERSECTIONS CONTROLLED BY TRAFFIC SIGNALS WHICH ARE INTERCONNECTED WITH THE RAILROAD WARNING SIGNALS.
2. EXTEND PAVEMENT MARKINGS TO THE INTERSECTION ONLY WHERE NEAR-SIDE TRAFFIC SIGNALS ARE USED.
3. WHERE THE ANGLE BETWEEN THE DIAGONAL PAVEMENT MARKINGS AND THE TRACK WOULD BE LESS THAN 20°, THE PAVEMENT MARKINGS SHOULD BE PLACED IN THE OPPOSITE DIRECTION FROM THAT SHOWN.

SUPPLEMENTAL PAVEMENT MARKING TREATMENT FOR RAILROAD-HIGHWAY GRADE CROSSING

NOT TO SCALE

Note: All dimensions are in INCHES (millimeters) unless otherwise shown.

FILE NAME =	USER NAME = swartzw	DESIGNED -	REVISED -
c:\pwwork\pwwork\swartzw\d0285365\077	558-shit-details.dgn	DRAWN -	REVISED -
	PLOT SCALE = 100.0000' / 1"	CHECKED -	REVISED -
	PLOT DATE = 3/14/2012	DATE -	REVISED -

STATE OF ILLINOIS
DEPARTMENT OF TRANSPORTATION

PAVEMENT MARKING AND RAISED REFLECTIVE PAVEMENT MARKERS
(RURAL & URBAN APPLICATIONS)

SCALE: NA SHEET NO. 4 OF 4 SHEETS STA. TO STA.

DISTRICT 7 DETAIL NO. 78000001				
F.A.S. RTE.	SECTION	COUNTY	TOTAL SHEETS	SHEET NO.
659	D7 SEAL COAT 2013-1	MOULTRIE	8	8
			CONTRACT NO. 74558	
ILLINOIS FED. AID PROJECT				