

STAGE A1

- WORK AREA
- TRAFFIC FLOW DIRECTION ARROWS
- TYPE III BARRICADE
- TEMPORARY PAVEMENT
- TEMPORARY PAVEMENT MARKING - SYMBOLS

- RAMP CLOSURES**
NONE
- ROAD CLOSURES**
NONE
- PROHIBITED MOVEMENTS**
NONE

DETOURS
NONE

WORKFLOW

- 1) SHIFT TRAFFIC TO UPSTREAM SIDE OF EX STRUCTURE
- 2) CONSTRUCT DOWNSTREAM SIDE OF PR STRUCTURE
- 3) CONSTRUCT GUARDRAIL
- 4) CONSTRUCT PROPOSED PAVEMENT
- 5) CONSTRUCT TEMPORARY PAVEMENT ON DOWNSTREAM SIDE OF PR STRUCTURE

APPROACH SIGNING - ALL APPROACHES TO PROJECT AREA

ROAD
CONSTRUCTION
AHEAD

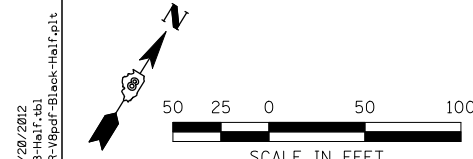
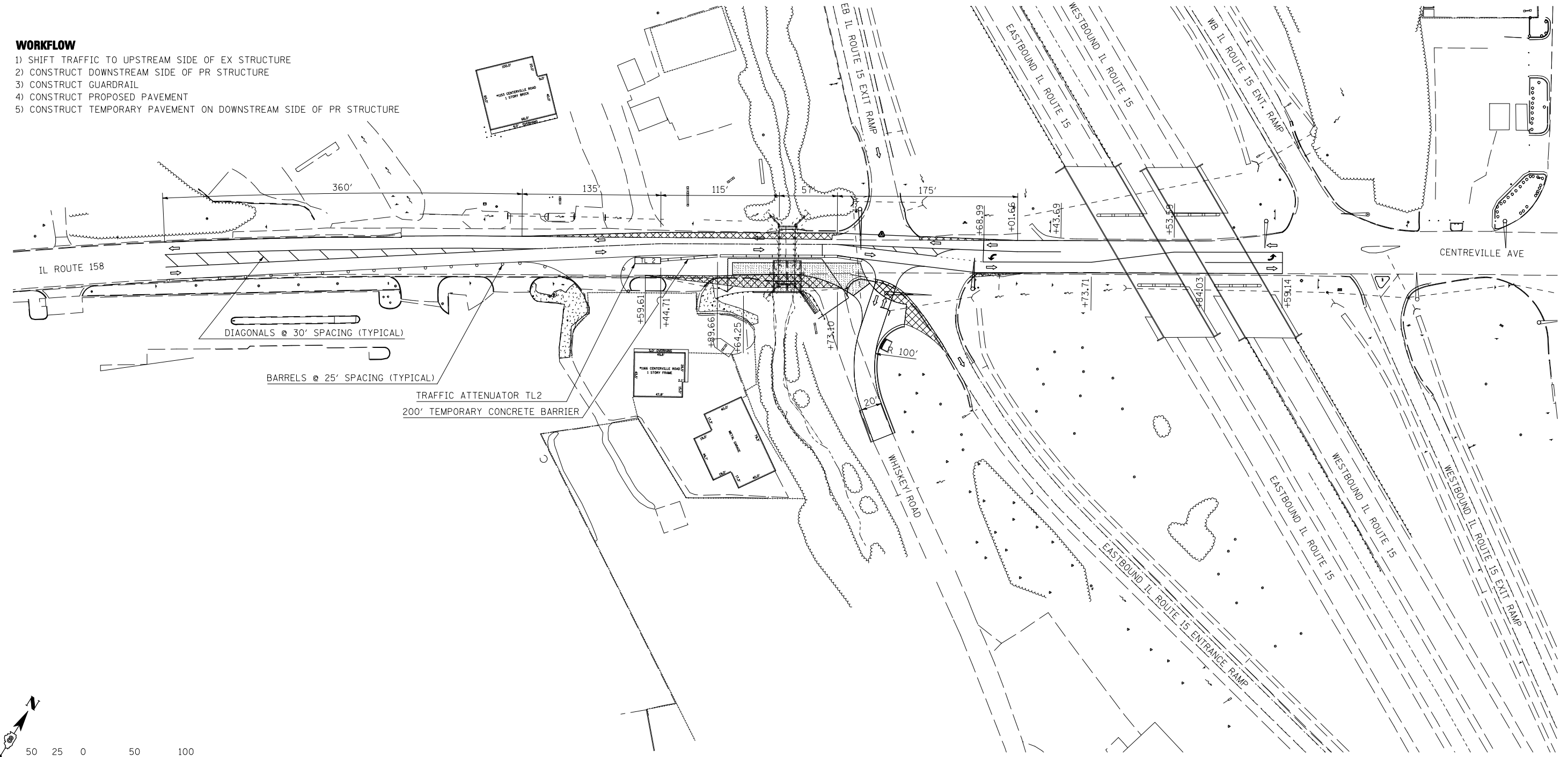
W20-1103(O)-48

SPEED
LIMIT

25

R2-1-2430

THESE SIGNS SHALL BE PLACED 400' PRIOR TO ANY SHIFT OR TAPER PRIOR TO THE CONSTRUCTION ZONE. IN THE EVENT OF A CONFLICT WITH AN IDOT STANDARD DETAIL, THE STANDARD DETAIL SHALL GOVERN, HOWEVER THE SPEED LIMIT SIGN SHALL BE ADDED TO THE "ROAD CONSTRUCTION AHEAD" SIGN.



LAST SAVED = 2/20/2012
 PEN TABLE = V8-H4-14-14
 PLOT DRIVER = TR-18pdf-Block-Half.plt

FILE NAME =	USER NAME = beriechmann	DESIGNED -	REVISED -
1:\0906600\0906603\cad\plans\020-D876006-Sht-Staging-A1.dgn		DRAWN -	REVISED -
PLOT SCALE = 100.0000' / IN.		CHECKED -	REVISED -
PLOT DATE = 3/20/2012 4:10:40 PM		DATE -	REVISED -

**STATE OF ILLINOIS
DEPARTMENT OF TRANSPORTATION**

**HORNER &
SHIRIN, INC.
ENGINEERS**

**SUGGESTED STAGES OF CONSTRUCTION
AND TRAFFIC CONTROL**
STAGE A1

SCALE: NONE 1"=50' SHEET NO. 1 OF 23 SHEETS STA. TO STA.

① F.A.P. RTE 809 / F.A.U. RTE 9251 / F.A.U. RTE 9269			
F.A. RTE.	SECTION	COUNTY	TOTAL SHEETS
①	135-N	ST. CLAIR	206
			SHEET NO. 51
CONTRACT NO. 76D06			
ILLINOIS FED. AID PROJECT			