
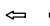





STAGE A2

-  WORK AREA
-  TRAFFIC FLOW DIRECTION ARROWS
-  TYPE III BARRICADE
-  TEMPORARY PAVEMENT
-  TEMPORARY PAVEMENT MARKING - SYMBOLS

- RAMP CLOSURES**
NONE
- ROAD CLOSURES**
NONE
- PROHIBITED MOVEMENTS**
NONE

DETOURS
NONE

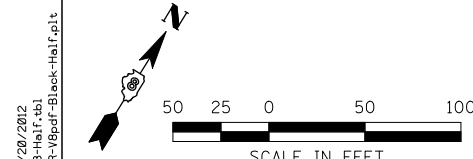
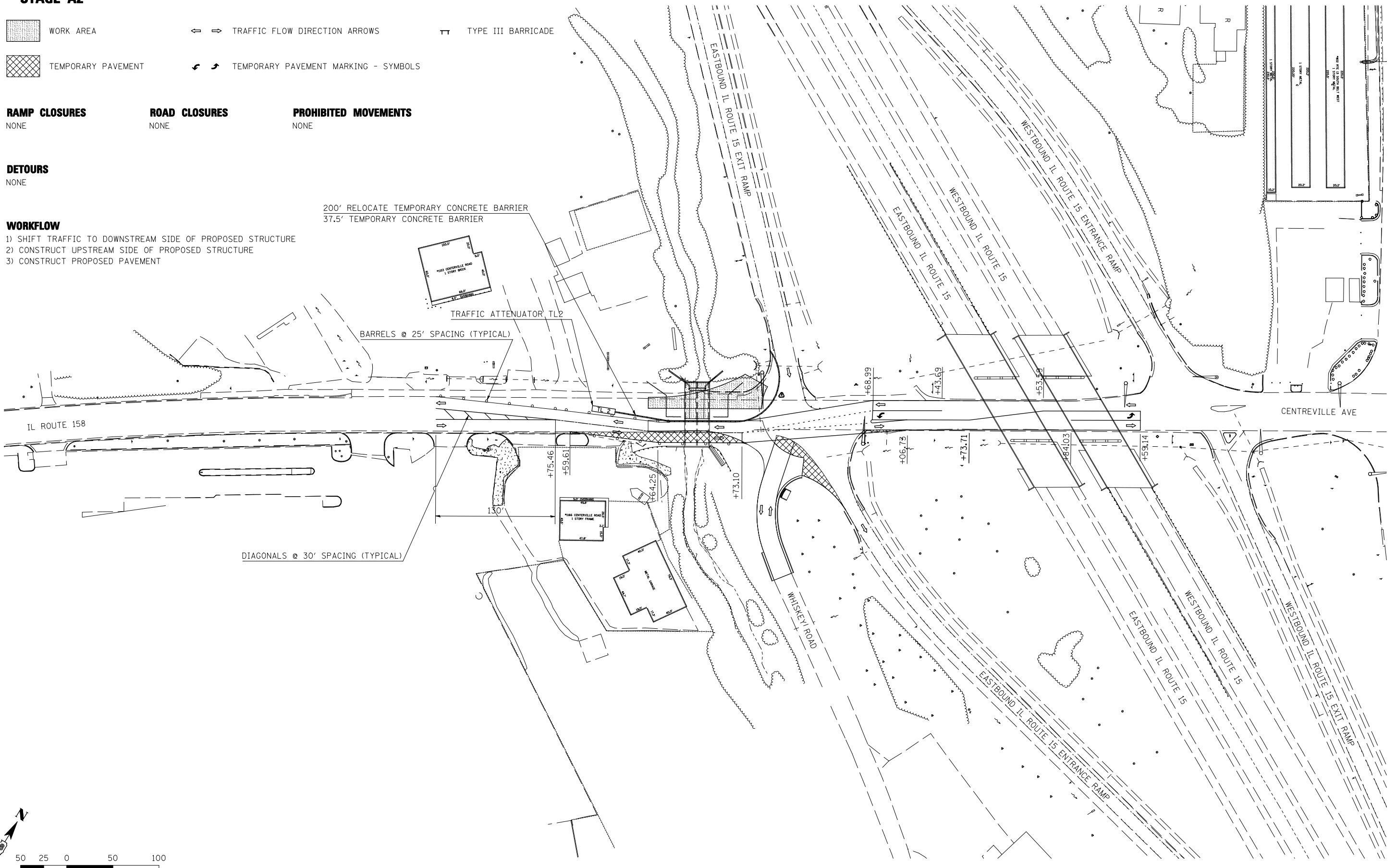
- WORKFLOW**
- 1) SHIFT TRAFFIC TO DOWNSTREAM SIDE OF PROPOSED STRUCTURE
 - 2) CONSTRUCT UPSTREAM SIDE OF PROPOSED STRUCTURE
 - 3) CONSTRUCT PROPOSED PAVEMENT

200' RELOCATE TEMPORARY CONCRETE BARRIER
37.5' TEMPORARY CONCRETE BARRIER

TRAFFIC ATTENUATOR TL2

BARRELS @ 25' SPACING (TYPICAL)

DIAGONALS @ 30' SPACING (TYPICAL)



LAST SAVED = 3/20/2012
 PEN TABLE = V8-HA-16-143
 PLOT DRIVER = TR-18pdf-Block-Half.plt

FILE NAME =	USER NAME = beriechmann	DESIGNED -	REVISED -
1:\0906600\0906603\cad\1\plans\021-0876006-Sht-Staging-A2.dgn		DRAWN -	REVISED -
PLOT SCALE = 100.0000' / IN.		CHECKED -	REVISED -
PLOT DATE = 3/20/2012 4:10:44 PM		DATE -	REVISED -

**STATE OF ILLINOIS
DEPARTMENT OF TRANSPORTATION**

**HORNER &
SHIRN, INC.
ENGINEERS**

**SUGGESTED STAGES OF CONSTRUCTION
AND TRAFFIC CONTROL**
STAGE A2

SCALE: 1"=50' SHEET NO. 2 OF 23 SHEETS STA. TO STA.

① F.A.P. RTE 809 / F.A.U. RTE 9251 / F.A.U. RTE 9269				
F.A. RTE.	SECTION	COUNTY	TOTAL SHEETS	SHEET NO.
①	135-N	ST. CLAIR	206	52
CONTRACT NO. 76D06				
ILLINOIS FED. AID PROJECT				