

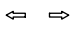

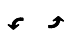


STAGE B1

-  WORK AREA
-  TEMPORARY PAVEMENT
-  TRAFFIC FLOW DIRECTION ARROWS
-  TYPE III BARRICADE
-  TEMPORARY PAVEMENT MARKING - SYMBOLS

RAMP CLOSURES

EB IL 15 EXIT
EB IL 15 ENTRANCE

ROAD CLOSURES

NONE

PROHIBITED MOVEMENTS

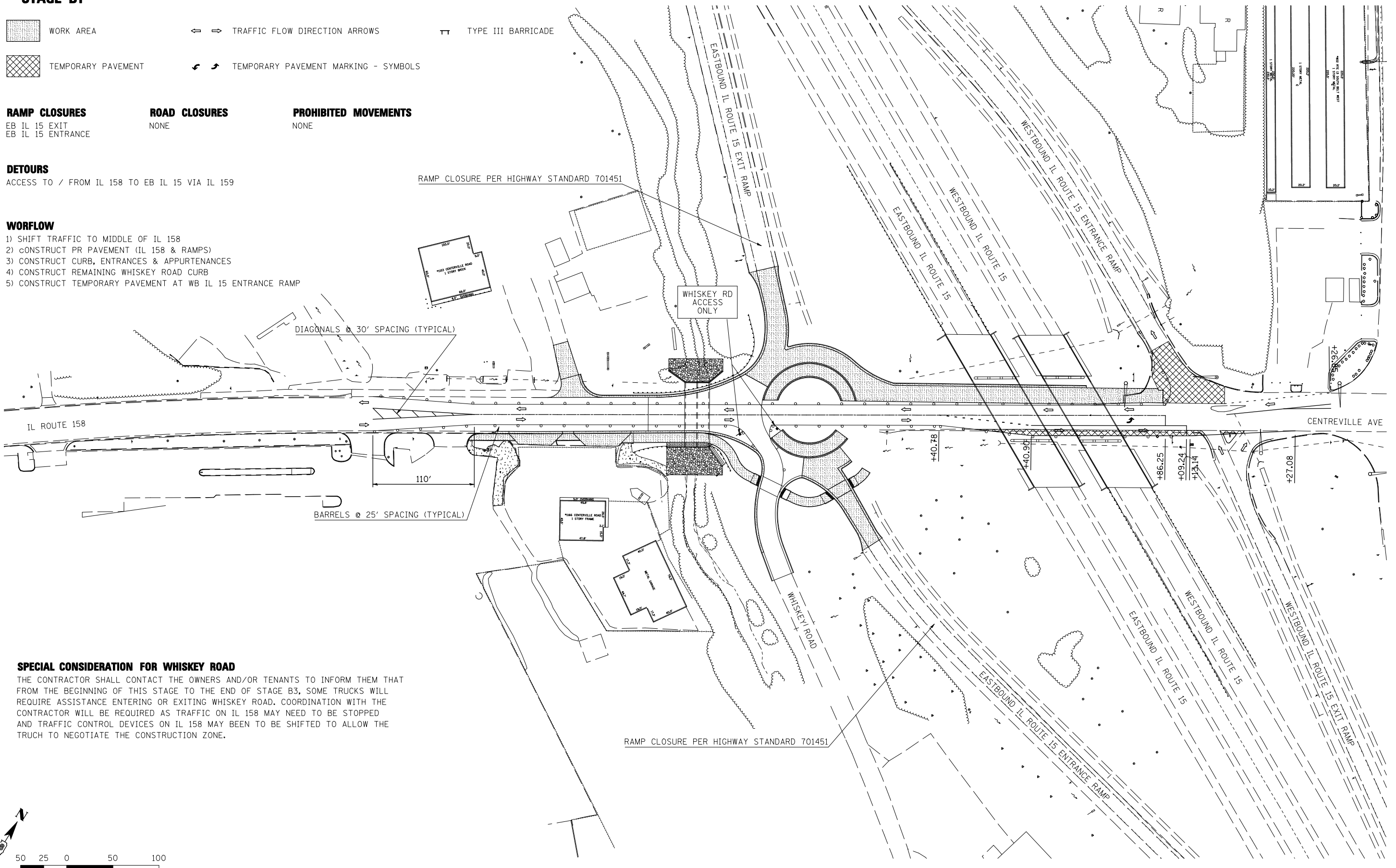
NONE

DETOURS

ACCESS TO / FROM IL 158 TO EB IL 15 VIA IL 159

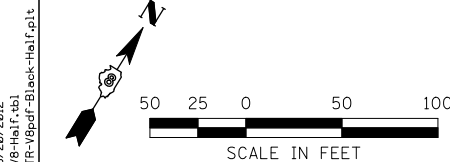
WORKFLOW

- 1) SHIFT TRAFFIC TO MIDDLE OF IL 158
- 2) CONSTRUCT PR PAVEMENT (IL 158 & RAMPS)
- 3) CONSTRUCT CURB, ENTRANCES & APPURTENANCES
- 4) CONSTRUCT REMAINING WHISKEY ROAD CURB
- 5) CONSTRUCT TEMPORARY PAVEMENT AT WB IL 15 ENTRANCE RAMP



SPECIAL CONSIDERATION FOR WHISKEY ROAD

THE CONTRACTOR SHALL CONTACT THE OWNERS AND/OR TENANTS TO INFORM THEM THAT FROM THE BEGINNING OF THIS STAGE TO THE END OF STAGE B3, SOME TRUCKS WILL REQUIRE ASSISTANCE ENTERING OR EXITING WHISKEY ROAD. COORDINATION WITH THE CONTRACTOR WILL BE REQUIRED AS TRAFFIC ON IL 158 MAY NEED TO BE STOPPED AND TRAFFIC CONTROL DEVICES ON IL 158 MAY BEEN TO BE SHIFTED TO ALLOW THE TRUCK TO NEGOTIATE THE CONSTRUCTION ZONE.



LAST SAVED = 2/20/2012
 PEN TABLE = V8-HA-1F-143
 PLOT DRIVER = TR-18pdf-Block-Half.plt

FILE NAME =	USER NAME = beriechmann	DESIGNED -	REVISED -
1:\0906600\0906603\cad\t\plans\022-D876006-Sht-Staging-B1.dgn		DRAWN -	REVISED -
		CHECKED -	REVISED -
		DATE -	REVISED -
PLOT SCALE = 100.0000' / IN.			
PLOT DATE = 3/20/2012 4:10:53 PM			

**STATE OF ILLINOIS
DEPARTMENT OF TRANSPORTATION**

**HORNER &
SHIRIN, INC.
ENGINEERS**

**SUGGESTED STAGES OF CONSTRUCTION
AND TRAFFIC CONTROL**

SCALE: 1"=50' SHEET NO. 4 OF 23 SHEETS STA. TO STA.

① F.A.P. RTE 809 / F.A.U. RTE 9251 / F.A.U. RTE 9269

F.A. RTE.	SECTION	COUNTY	TOTAL SHEETS	SHEET NO.
①	135-N	ST. CLAIR	206	54
				CONTRACT NO. 76D06
ILLINOIS FED. AID PROJECT				