

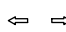



**STAGE C5**

-  WORK AREA
-  TEMPORARY PAVEMENT
-  TRAFFIC FLOW DIRECTION ARROWS
-  TEMPORARY PAVEMENT MARKING - SYMBOLS

TT TYPE III BARRICADE

**RAMP CLOSURES**

WB IL 15 ENTRANCE

**ROAD CLOSURES**

IL 13 (TO THE WEST)

**PROHIBITED MOVEMENTS**

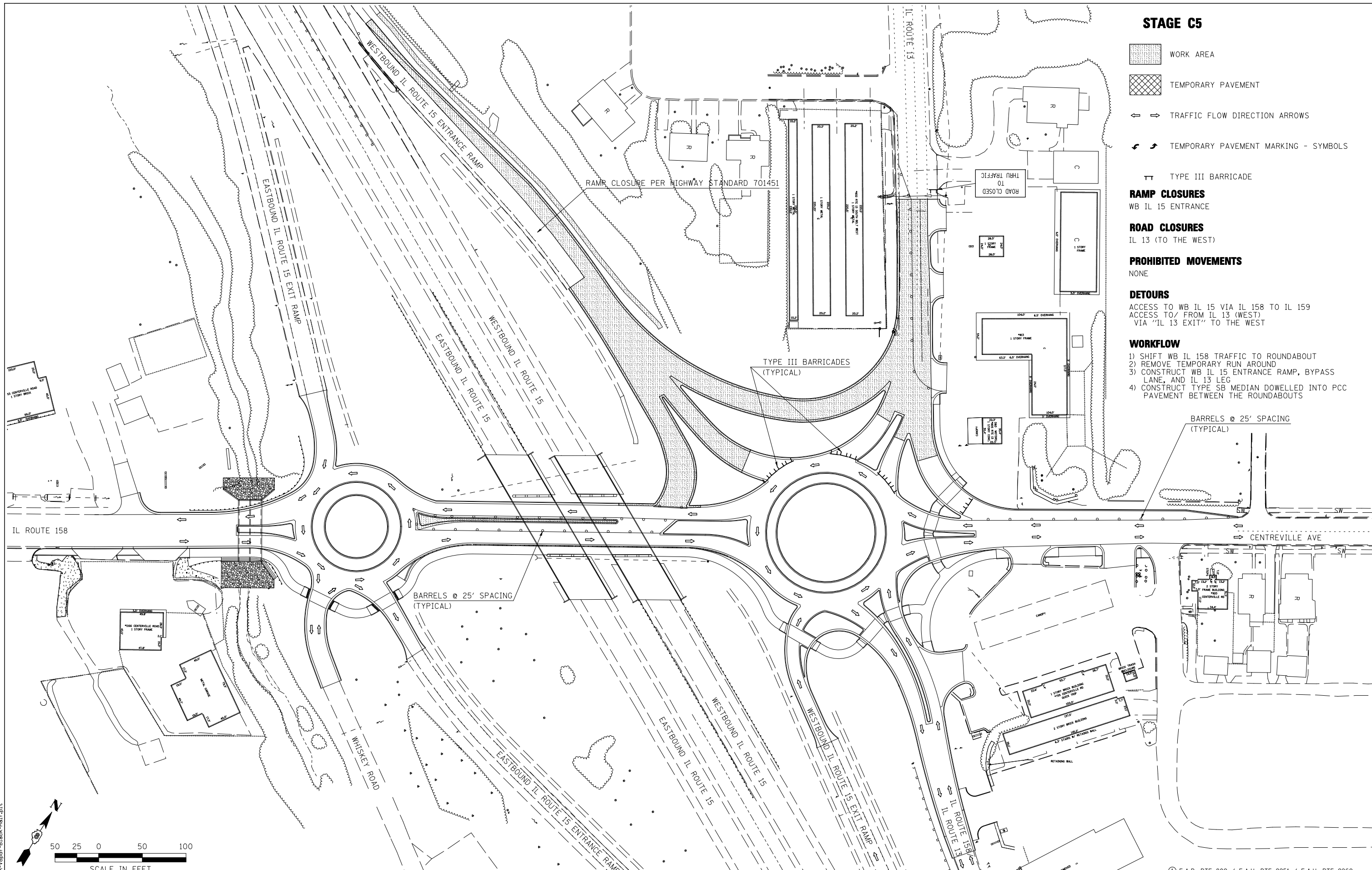
NONE

**DETOURS**

ACCESS TO WB IL 15 VIA IL 158 TO IL 159  
ACCESS TO/ FROM IL 13 (WEST)  
VIA "IL 13 EXIT" TO THE WEST

**WORKFLOW**

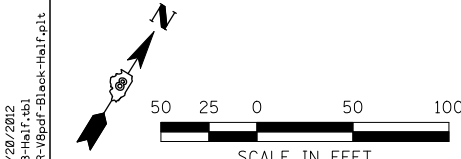
- 1) SHIFT WB IL 158 TRAFFIC TO ROUNDABOUT
- 2) REMOVE TEMPORARY RUN AROUND
- 3) CONSTRUCT WB IL 15 ENTRANCE RAMP, BYPASS LANE, AND IL 13 LEG
- 4) CONSTRUCT TYPE SB MEDIAN DOWELLED INTO PCC PAVEMENT BETWEEN THE ROUNDABOUTS



BARRELS @ 25' SPACING (TYPICAL)

BARRELS @ 25' SPACING (TYPICAL)

TYPE III BARRICADES (TYPICAL)



LAST SAVED = 9/20/2012  
 PEN TABLE = V8-HA-1C-143  
 PLOT DRIVER = TR-18pdf-Block-Half.plt

FILE NAME =	USER NAME = beriechmann	DESIGNED -	REVISED -
1:\0906600\0906603\cad\t\plans\029-D876006-Sht-Staging-C5.dgn		DRAWN -	REVISED -
PLOT SCALE = 100.0000' / IN.		CHECKED -	REVISED -
PLOT DATE = 3/20/2012 4:11:28 PM		DATE -	REVISED -

**STATE OF ILLINOIS  
DEPARTMENT OF TRANSPORTATION**

**HORNER &  
SHIRIN, INC.  
ENGINEERS**

**SUGGESTED STAGES OF CONSTRUCTION  
AND TRAFFIC CONTROL**

SCALE: 1"=50' SHEET NO. 11 OF 23 SHEETS STAGE C5 STA. TO STA.

① F.A.P. RTE 809 / F.A.U. RTE 9251 / F.A.U. RTE 9269				
F.A. RTE.	SECTION	COUNTY	TOTAL SHEETS	SHEET NO.
①	135-N	ST. CLAIR	206	61
				CONTRACT NO. 76D06
ILLINOIS FED. AID PROJECT				