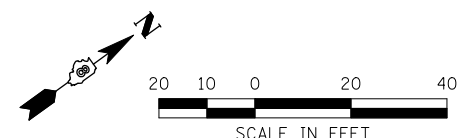
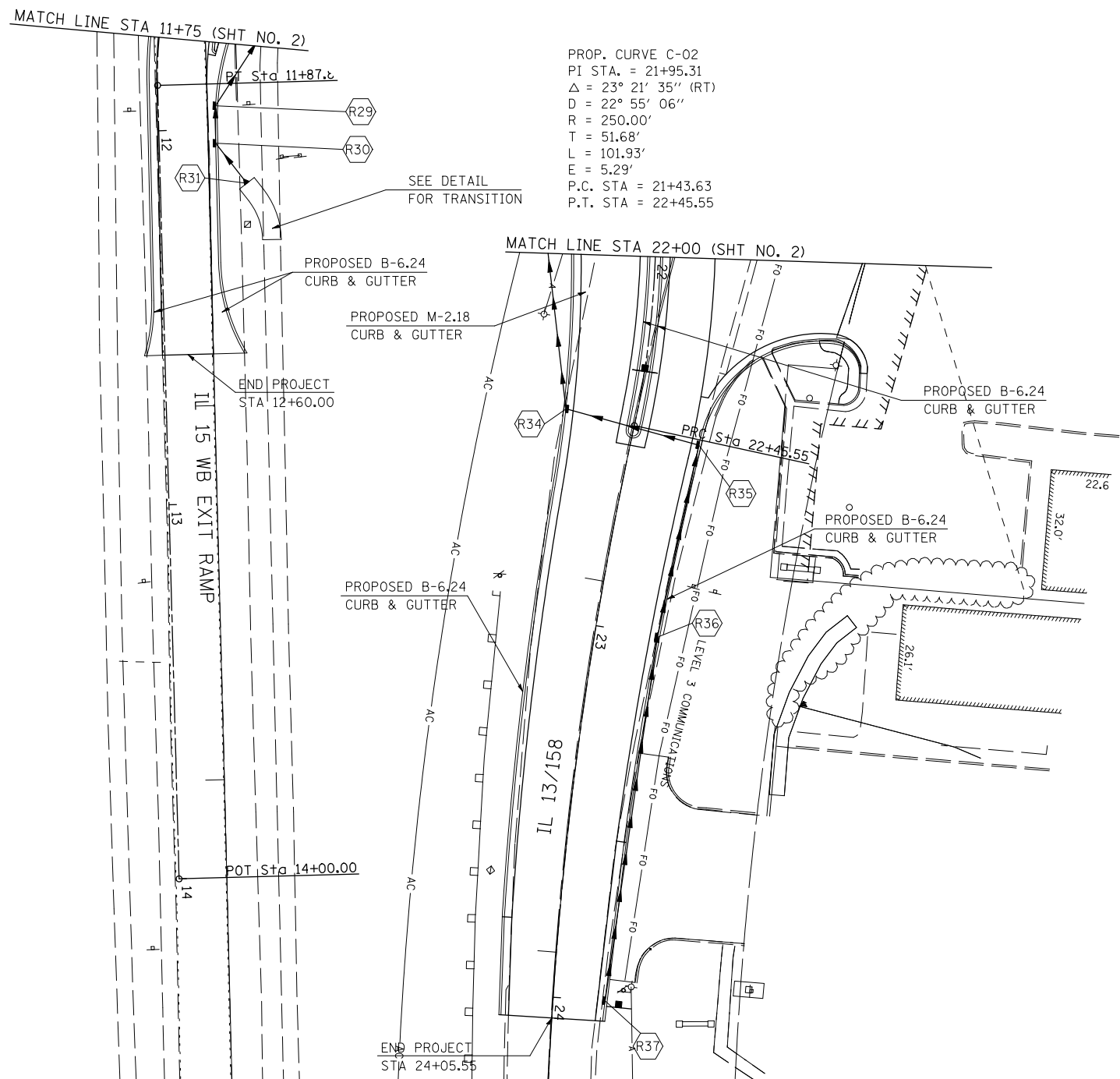
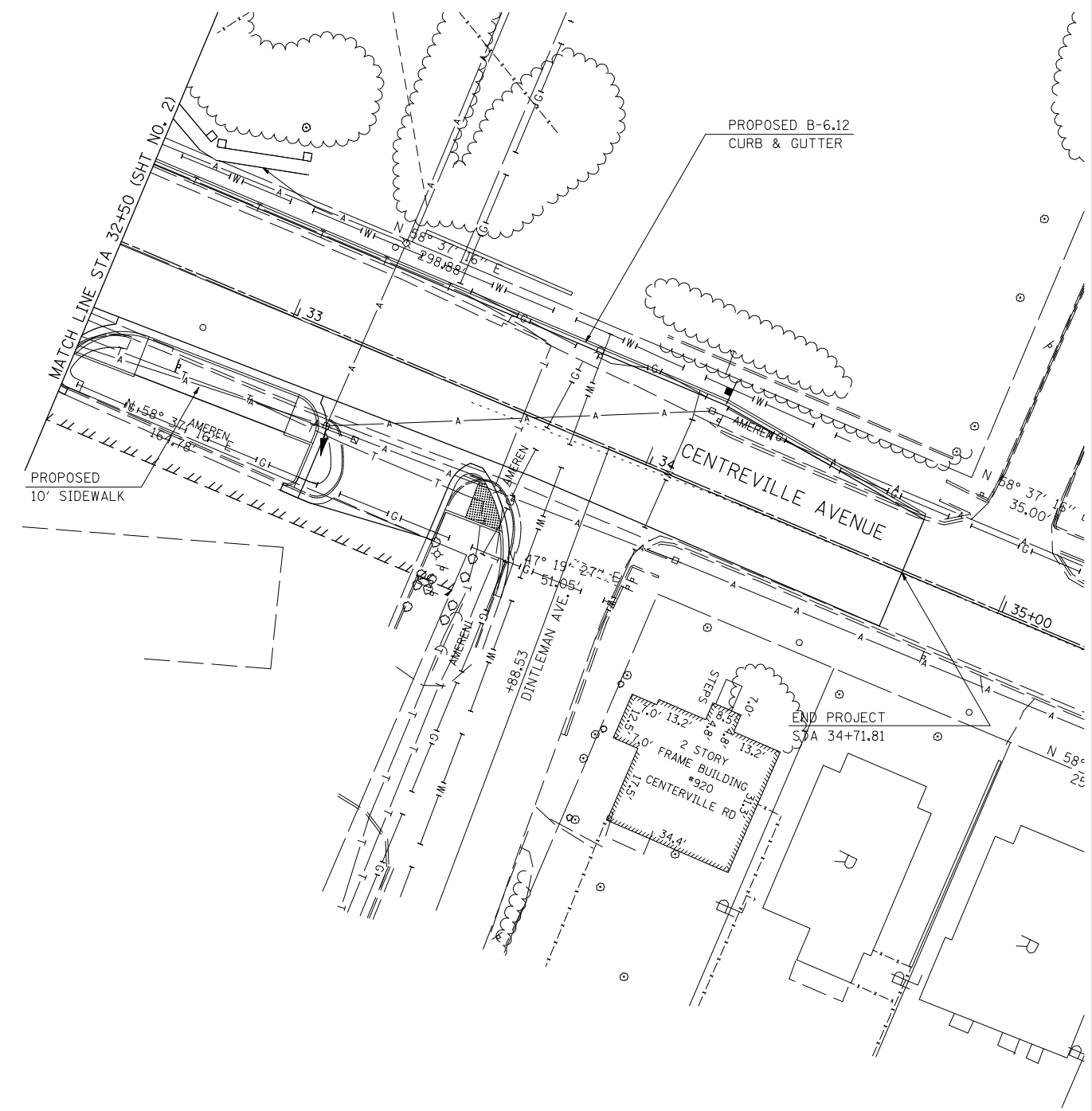


PROP. CURVE C-01
 PI STA. = 11+46.33
 $\Delta = 45^\circ 52' 06''$ (LT)
 $D = 52^\circ 05' 13''$
 $R = 110.00'$
 $T = 46.54'$
 $L = 88.06'$
 $E = 9.44'$
 P.C. STA = 10+99.79
 P.T. STA = 11+87.85

PROP. CURVE C-02
 PI STA. = 21+95.31
 $\Delta = 23^\circ 21' 35''$ (RT)
 $D = 22^\circ 55' 06''$
 $R = 250.00'$
 $T = 51.68'$
 $L = 101.93'$
 $E = 5.29'$
 P.C. STA = 21+43.63
 P.T. STA = 22+45.55



LAST SAVED = 2/20/2012
 PEN TABLE = V8-HA-F-144
 PLOT DRIVER = TR-18pdf-Block-Half.plt

FILE NAME =	USER NAME = beriechmann	DESIGNED -	REVISED -
1:\0906600\0906603\cad\plans\053-D876006-Sht-Drain-04.dgn		DRAWN -	REVISED -
PLOT SCALE = 40.0000' / IN.		CHECKED -	REVISED -
PLOT DATE = 3/20/2012 4:12:10 PM		DATE -	REVISED -

**STATE OF ILLINOIS
 DEPARTMENT OF TRANSPORTATION**

**HORNER &
 SHIRN, INC
 ENGINEERS**

DRAINAGE AND UTILITIES PLAN
 IL 15 WESTBOUND EXIT RAMP, IL 13 EAST LEG
 & IL 158 / CENTERVILLE AVENUE

SCALE: 1" = 20' SHEET NO. 4 OF 4 SHEETS STA. TO STA.

① F.A.P. RTE 809 / F.A.U. RTE 9251 / F.A.U. RTE 9269			
F.A. RTE.	SECTION	COUNTY	TOTAL SHEETS
①	135-N	ST. CLAIR	206
			SHEET NO. 82
CONTRACT NO. 76D06			
ILLINOIS FED. AID PROJECT			