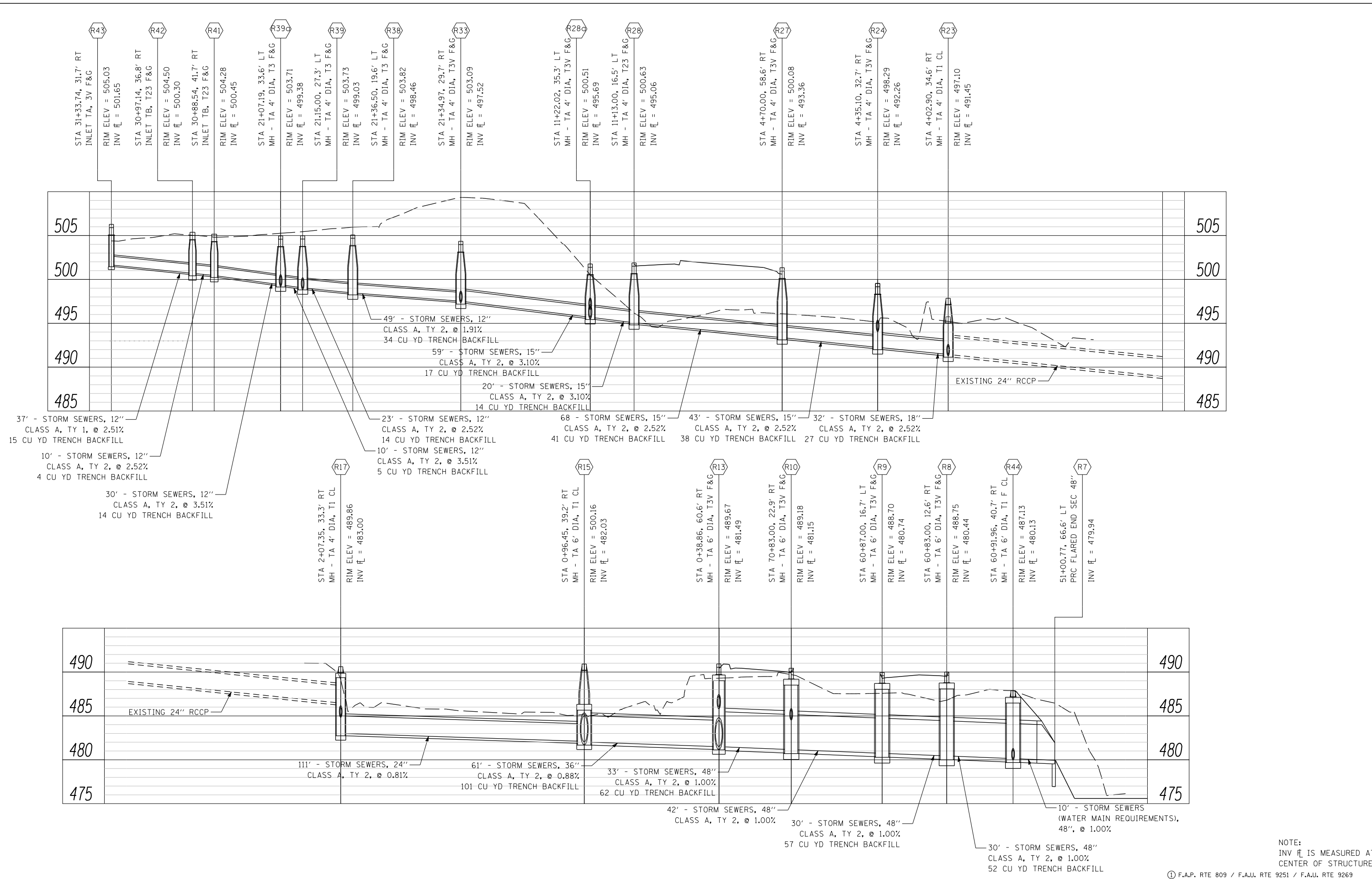


LAST SAVED = 2/20/2012
 PEN TABLE = V8-HA-F-143
 PLOT DRIVER = TR-18pdf-Block-Half.plt



FILE NAME =	USER NAME = beriechmann	DESIGNED -	REVISED -
1:\0906600\0906603\cad\plans\054-D876006-Sht-Drain-05.dgn		DRAWN -	REVISED -
PLOT SCALE = 40.0000' / IN.		CHECKED -	REVISED -
PLOT DATE = 3/20/2012 4:12:17 PM		DATE -	REVISED -

STATE OF ILLINOIS DEPARTMENT OF TRANSPORTATION

HORNER & SHIPP, INC. ENGINEERS

DRAINAGE AND UTILITIES PROFILES	
SCALE: 20H : 5V	SHEET NO. 5 OF 6 SHEETS
STA.	TO STA.

F.A. RTE.	SECTION	COUNTY	TOTAL SHEETS	SHEET NO.
①	135-N	ST. CLAIR	206	87
CONTRACT NO. 76D06				
ILLINOIS FED. AID PROJECT				

NOTE:
 INV ELEV IS MEASURED AT
 CENTER OF STRUCTURE