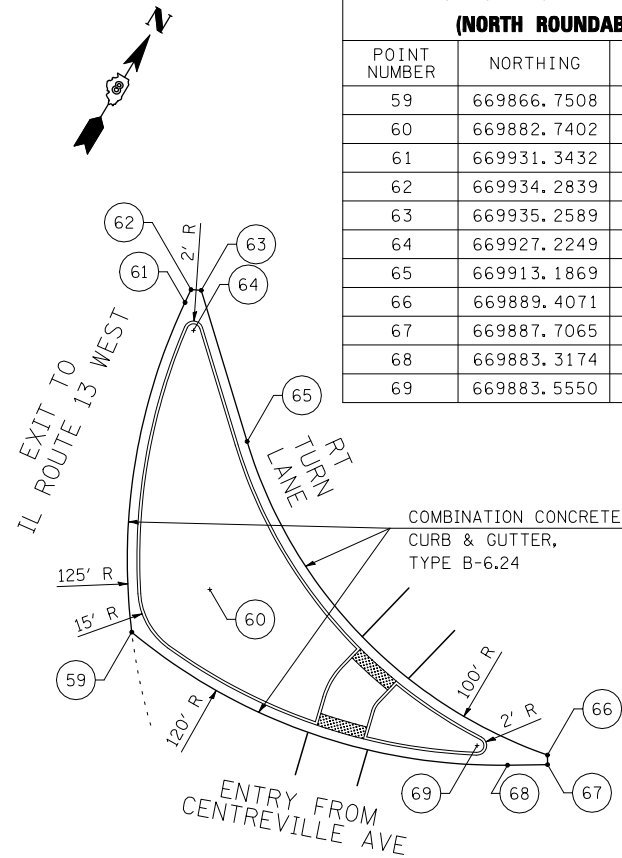


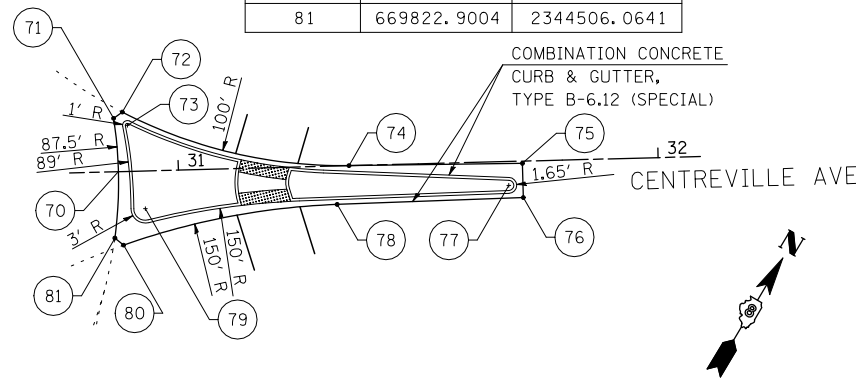
IL 13 RIGHT TURN LANE ISLAND (NORTH ROUNDABOUT)

POINT NUMBER	NORTHING	EASTING
59	669866.7508	2344472.0275
60	669882.7402	2344481.3867
61	669931.3432	2344446.1637
62	669934.2839	2344445.8557
63	669935.2589	2344447.7592
64	669927.2249	2344450.6774
65	669913.1869	2344472.1566
66	669889.4071	2344559.4554
67	669887.7065	2344560.5079
68	669883.3174	2344553.4160
69	669883.5550	2344545.8750



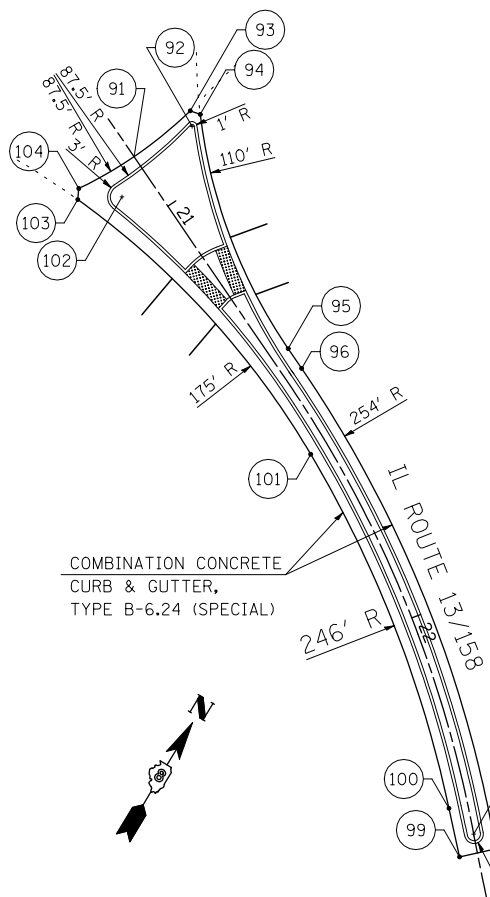
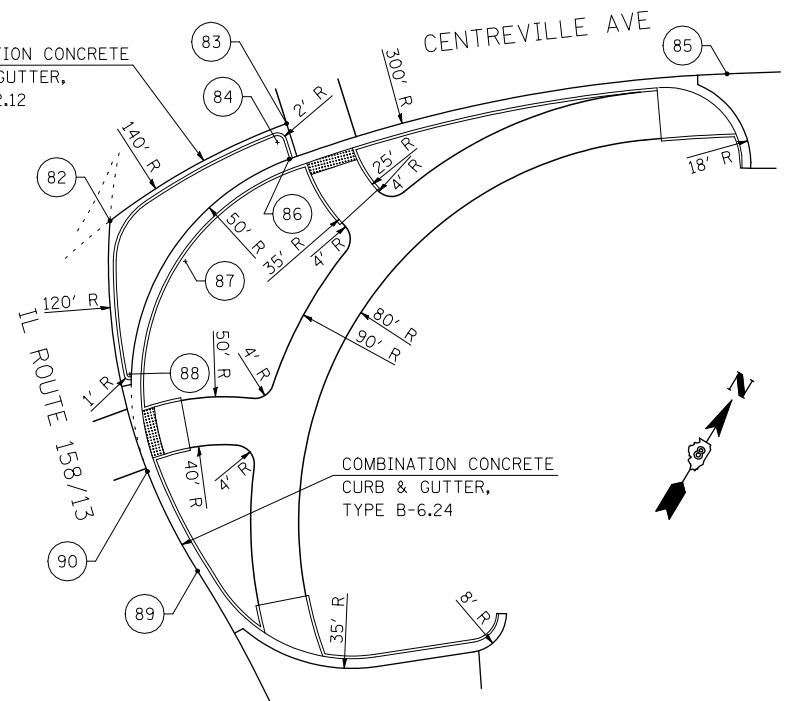
CENTREVILLE AVE SPLITTER ISLAND (NORTH ROUNDABOUT)

POINT NUMBER	NORTHING	EASTING
70	669835.1403	2344499.5693
71	669844.1500	2344492.9876
72	669846.2056	2344493.8706
73	669844.3747	2344496.2024
74	669860.9684	2344540.1069
75	669879.9834	2344570.8316
76	669873.9699	2344574.6616
77	669874.5856	2344570.7548
78	669852.7641	2344542.1492
79	669831.4292	2344508.3539
80	669822.5698	2344508.3775
81	669822.9004	2344506.0641



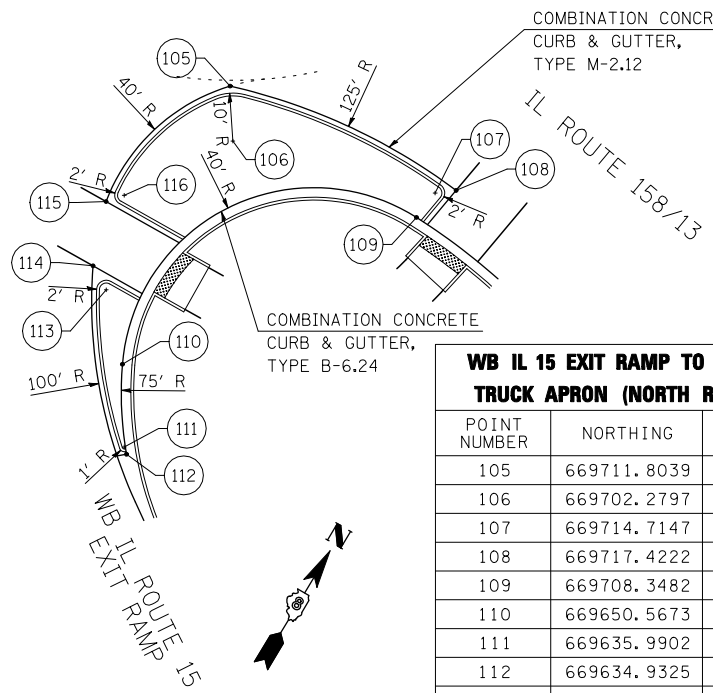
IL ROUTE 158 TO CENTREVILLE AVE TRUCK APRON (NORTH ROUNDABOUT)

POINT NUMBER	NORTHING	EASTING
82	669791.7688	2344517.9539
83	669828.1067	2344539.0381
84	669823.7541	2344539.4376
85	669884.2435	2344612.3787
86	669822.0446	2344543.3541
87	669792.6332	2344535.7223
88	669766.5246	2344537.9378
89	669738.6296	2344571.1728
90	669751.0269	2344551.5245



IL ROUTE 13 / 158 SPLITTER ISLAND (NORTH ROUNDABOUT)

POINT NUMBER	NORTHING	EASTING
91	669751.5419	2344505.2471
92	669763.1873	2344512.3694
93	669765.7507	2344510.3549
94	669766.1964	2344512.5360
95	669733.7829	2344553.3834
96	669731.7032	2344557.9005
97	669666.9933	2344638.5976
98	669666.7419	2344644.1314
99	669661.4014	2344638.5285
100	669668.9470	2344631.4070
101	669717.3461	2344568.7333
102	669743.0381	2344507.4117
103	669737.8407	2344499.7982
104	669739.9266	2344498.7881

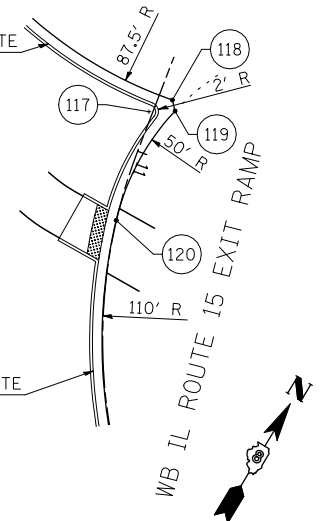


WB IL 15 EXIT RAMP TO IL ROUTE 158 TRUCK APRON (NORTH ROUNDABOUT)

POINT NUMBER	NORTHING	EASTING
105	669711.8039	2344470.9942
106	669702.2797	2344477.3807
107	669714.7147	2344519.0862
108	669717.4222	2344522.5517
109	669708.3482	2344518.3683
110	669650.5673	2344481.6160
111	669635.9902	2344490.8058
112	669634.9325	2344492.0032
113	669662.1283	2344470.7301
114	669664.9920	2344465.8009
115	669677.8694	2344461.2262
116	669680.9428	2344463.8152

WB IL 15 EXIT RAMP ENTRY FLARE (NORTH ROUNDABOUT)

POINT NUMBER	NORTHING	EASTING
117	669697.8693	2344440.7404
118	669702.4868	2344443.6693
119	669700.8006	2344445.3325
120	669674.9533	2344446.5568



FILE NAME =	USER NAME = beriechmann	DESIGNED -	REVISED -
\\0906600\0906603\cad\plans\067-D876026-Sht-Intersec-08.dgn		DRAWN -	REVISED -
	PLOT SCALE = 40.0000' / IN.	CHECKED -	REVISED -
	PLOT DATE = 3/20/2012	DATE -	REVISED -

**STATE OF ILLINOIS
DEPARTMENT OF TRANSPORTATION**

**HORNER &
SHIPP, INC.
ENGINEERS**

**INTERSECTION ELEVATIONS
NORTHERN ROUNDABOUT**

SCALE: SHEET NO. 6 OF 7 SHEETS STA. TO STA.

F.A. RTE.	SECTION	COUNTY	TOTAL SHEETS	SHEET NO.
①	135-N	ST. CLAIR	206	107
CONTRACT NO. 76D06				
ILLINOIS FED. AID PROJECT				