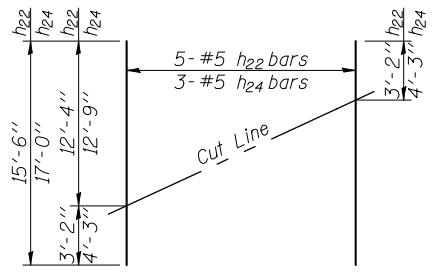


Notes:
 Tie rods shall be tensioned to remove any sag in the tie rod.
 All labor and materials required to fabricate and install tie rods and deadman wales shall be included in Furnishing and Erecting Structural Steel.
 All labor and materials required to install stiffeners in soldier piles shall be included in Furnishing Soldier Piles (HP Section).

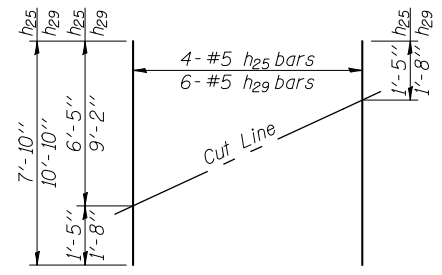
SECTION THRU SOLDIER PILE WING WALL

TABLE OF VARIABLE DIMENSIONS

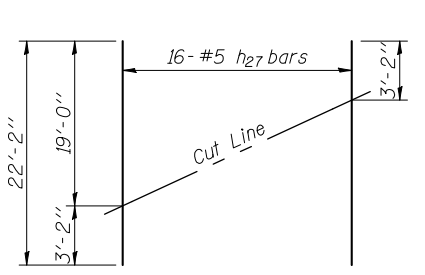
ITEM	N.E. Wing	N.W. Wing	S.E. Wing	S.W. Wing
Soldier Pile	HP12x53	HP12x53	HP14x102	HP12x53
Wale	HP12x53	HP12x53	HP12x53	HP12x53
Elev. A	487.83	486.17	488.00	488.50
Elev. B	481.50	481.50	481.00	483.00
Elev. C	478.33	479.17	475.00	480.25
Elev. D	452.00	464.00	451.00	454.00
Dim. E	6.80	5.09	19.12	5.95
Dim. F	1 1/2"	1 1/2"	2"	1 1/2"
Dim. G	3/4"	3/4"	1"	3/4"
Dim. H	1 1/2"	1 1/2"	2"	1 1/2"
Dim. I	1'-0"	1'-0"	1'-2"	1'-0"
Dim. J	1'-4"	1'-4"	1'-5"	1'-4"
Dim. K	4"	4"	4 1/2"	4"



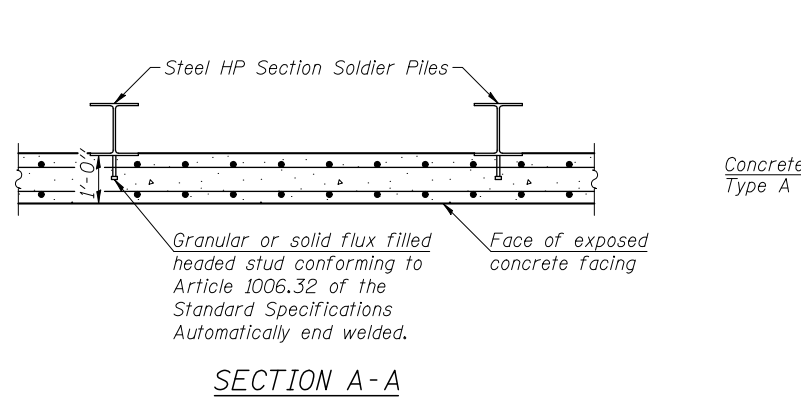
FIELD CUTTING DIAGRAM
 Order h22 & h24 bars full length. Cut as shown and use remainder of bars in opposite face.



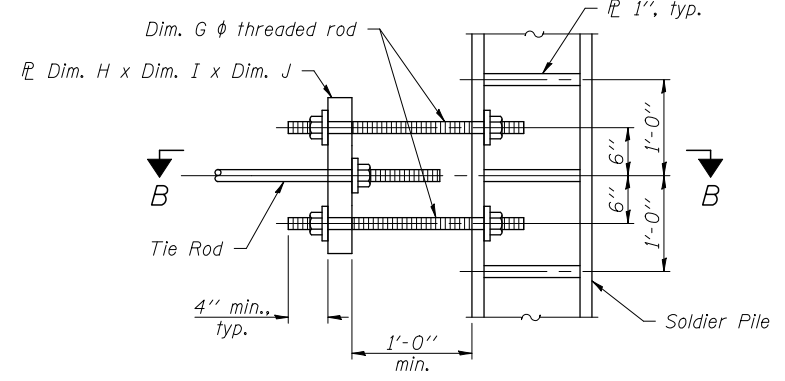
FIELD CUTTING DIAGRAM
 Order h25 & h29 bars full length. Cut as shown and use remainder of bars in opposite face.



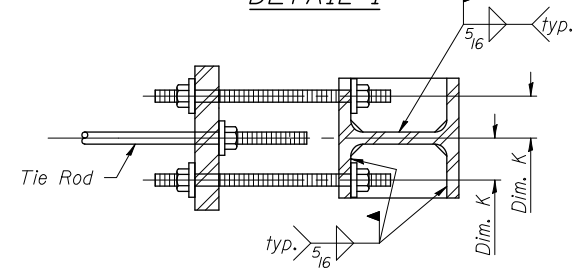
FIELD CUTTING DIAGRAM
 Order h27 bars full length. Cut as shown and use remainder of bars in opposite face.



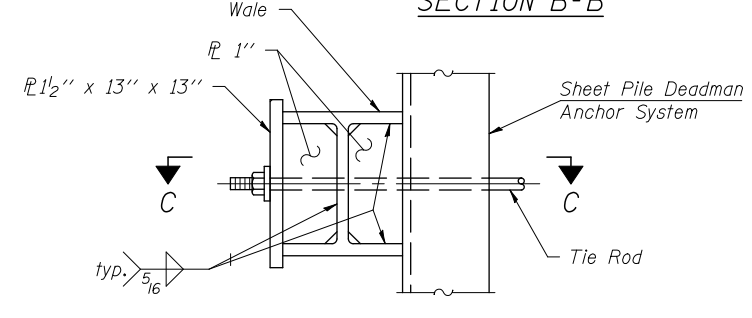
SECTION A-A



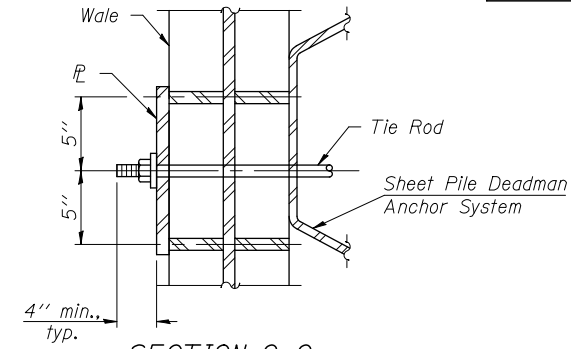
DETAIL 1



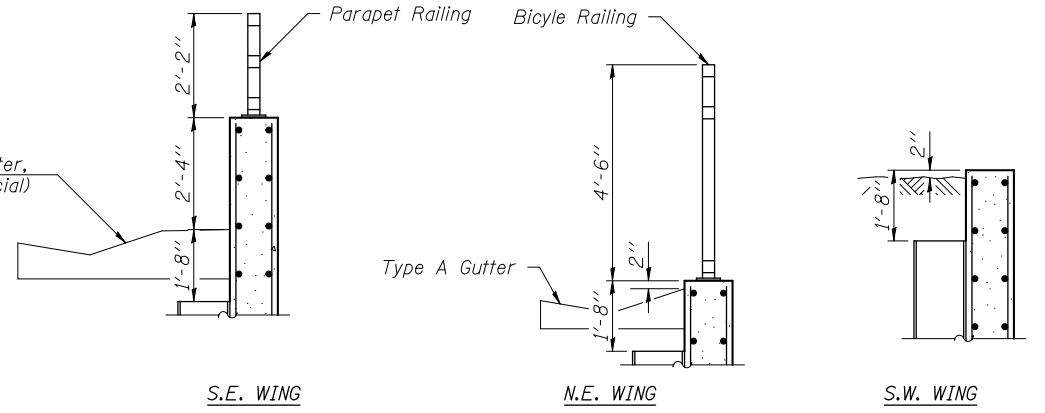
SECTION B-B



DETAIL 2



SECTION C-C



DETAIL 3

N.E. WING BILL OF MATERIAL

Bar	No.	Size	Length	Shape
h22	5	#5	15'-6"	—
h23	4	#5	12'-9"	—
h24	3	#5	17'-0"	—
v6	13	#5	14'-2"	—
Concrete Structures			Cu. Yd.	3.6
Furnishing and Erecting Structural Steel			Pound	1,940
Stud Shear Connectors			Each	18
Reinforcement Bars			Pound	380
Furnishing Soldier Piles (HP Section)			Foot	99
Driving Soldier Piles			Foot	99
Permanent Steel Sheet Piling			Sq. Ft.	129

N.W. WING BILL OF MATERIAL

Bar	No.	Size	Length	Shape
h25	4	#5	7'-10"	—
h26	8	#5	6'-9"	—
v7	7	#5	11'-3"	—
Concrete Structures			Cu. Yd.	1.6
Furnishing and Erecting Structural Steel			Pound	1,210
Stud Shear Connectors			Each	9
Reinforcement Bars			Pound	170
Furnishing Soldier Piles (HP Section)			Foot	41
Driving Soldier Piles			Foot	41
Permanent Steel Sheet Piling			Sq. Ft.	56

S.E. WING BILL OF MATERIAL

Bar	No.	Size	Length	Shape
h27	16	#5	22'-2"	—
h28(E)	12	#5	19'-0"	—
v8(E)	17	#5	25'-3"	—
v9(E)	6	#5	20'-3"	—
Concrete Structures			Cu. Yd.	10.2
Furnishing and Erecting Structural Steel			Pound	4,210
Stud Shear Connectors			Each	51
Reinforcement Bars			Pound	370
Reinforcement Bars, Epoxy Coated			Pound	810
Furnishing Soldier Piles (HP Section)			Foot	190
Driving Soldier Piles			Foot	190
Permanent Steel Sheet Piling			Sq. Ft.	251

S.W. WING BILL OF MATERIAL

Bar	No.	Size	Length	Shape
h29	6	#5	10'-10"	—
h30	6	#5	9'-6"	—
v10	10	#5	12'-7"	—
Concrete Structures			Cu. Yd.	2.4
Furnishing and Erecting Structural Steel			Pound	1,270
Stud Shear Connectors			Each	10
Reinforcement Bars			Pound	260
Furnishing Soldier Piles (HP Section)			Foot	66
Driving Soldier Piles			Foot	66
Permanent Steel Sheet Piling			Sq. Ft.	83

Notes:
 It shall be noted that the Sheet Pile Anchor System for the S.E. Wing may coincide with the Stage II Temporary Soil Retention System. At the Contractor's option, the Sheet Pile Anchor System for the S.E. Wing may be incorporated into the Stage II Temporary Soil Retention System. The elevations and minimum section modulus shown may be adjusted to suit the design of the Temporary Soil Retention System, but shall meet the design requirements of the Sheet Pile Anchor System as a minimum. Additional materials required shall be included with Temporary Soil Retention System.
 Holes shall be field drilled in Soldier Pile flange and Sheet Pile Anchor System, 1/8" φ larger than threaded rods and tie rods.
 All nuts and washers shall be ASTM A325 Type 1, mechanically galvanized.
 For Elevation of soldier pile wingwalls, see sheet 12 of 20.
 For Soldier Pile and Deadman Layout, see sheet 13 of 20.
 For waterstop details, see sheet 13 of 20.
 For Steel H-Pile details, see sheet 16 of 20.