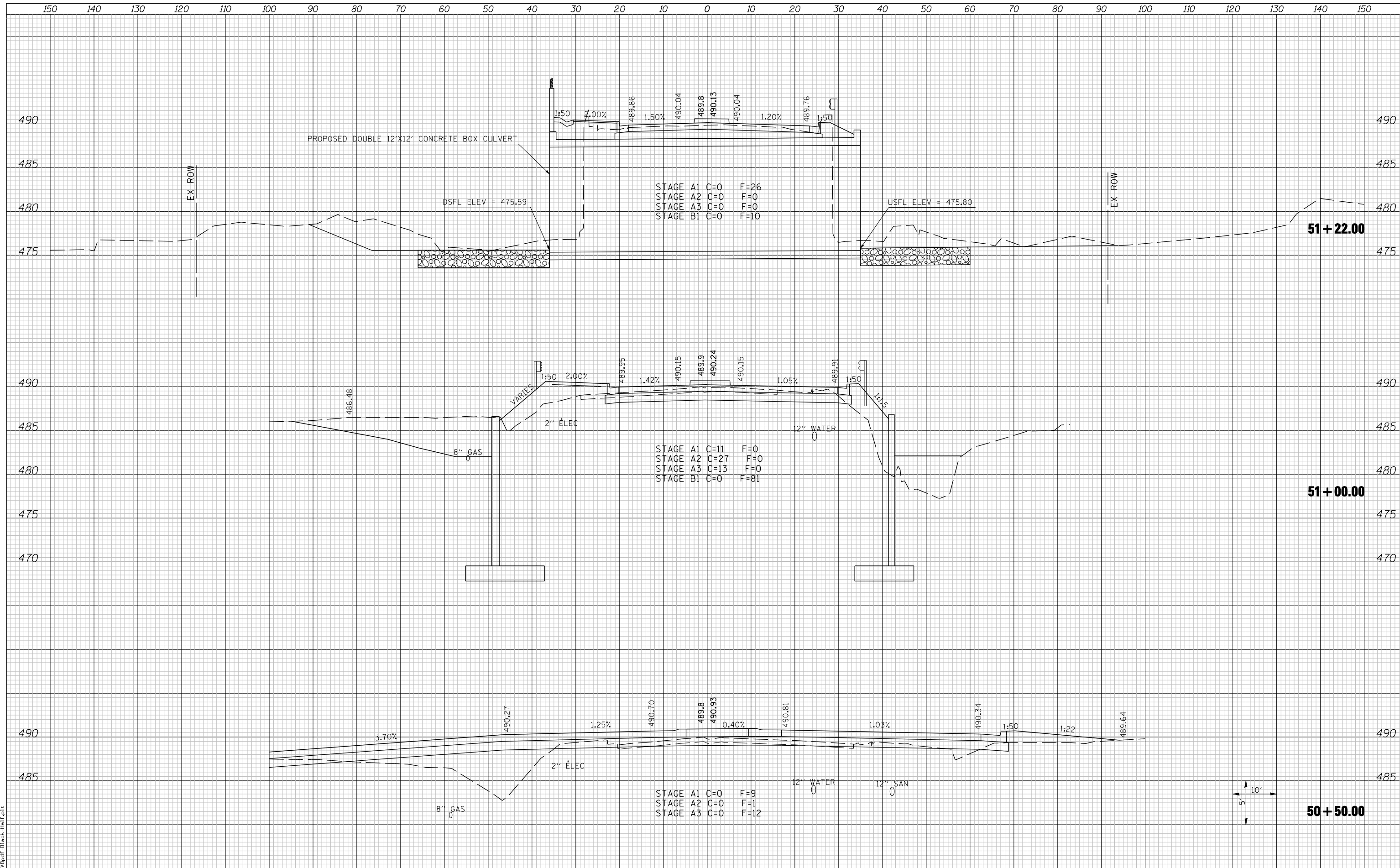


DATE	
BY	
SURVEYED	
PLOTTED	
TEMPLATE	
AREAS	
CHECKED	
NO.	

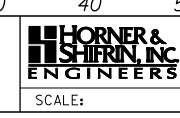
DATE	
BY	
SURVEYED	
PLOTTED	
TEMPLATE	
AREAS	
CHECKED	
NO.	

LAST SAVED = 3/20/2012
 PEN TABLE = 10-Half-103
 PLOT DRIVER = P:\3d\p1\black-hal.f.plt



FILE NAME =	USER NAME = beriechmann	DESIGNED -	REVISED -
		DRAWN -	REVISED -
		CHECKED -	REVISED -
		DATE -	REVISED -

**STATE OF ILLINOIS
DEPARTMENT OF TRANSPORTATION**



CROSS SECTIONS
 FAP 809
 (IL 158 SOUTH)

SCALE: SHEET NO. 1 OF 3 SHEETS STA. 50+50.00 TO STA. 51+21.95

F.A. RTE.	SECTION	COUNTY	TOTAL SHEETS	SHEET NO.
①	135-N	ST. CLAIR	206	167
②	F.A.P. RTE 809 / F.A.U. RTE 9251	CONTRACT NO.	76D06	
/ F.A.U. RTE 9269 ILLINOIS FED. AID PROJECT				