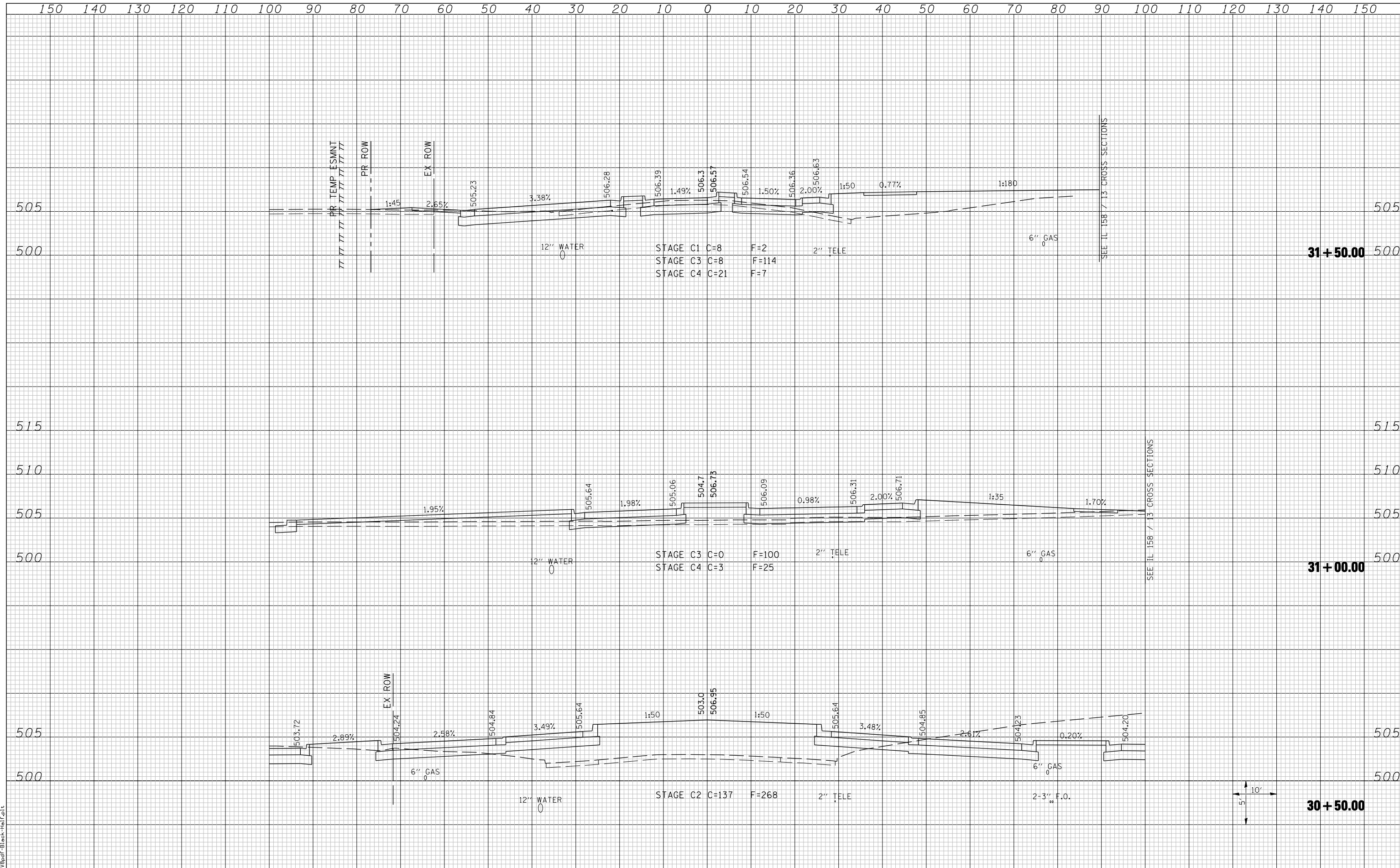


DATE	
BY	
SURVEYED	
PLOTTED	
TEMPLATE	
AREAS	
CHECKED	
NO.	

DATE	
BY	
SURVEYED	
PLOTTED	
TEMPLATE	
AREAS	
CHECKED	
NO.	



LAST SAVED = 3/20/2012
 PEN TABLE = 10-Half-103
 PLOT DRIVER = P:\1385d\FBlack-Half.plt

FILE NAME =	USER NAME = beriechmann	DESIGNED -	REVISD -	STATE OF ILLINOIS DEPARTMENT OF TRANSPORTATION		CROSS SECTIONS		F.A. RTE.	SECTION	COUNTY	TOTAL SHEETS	SHEET NO.
		DRAWN -	REVISD -			135-N	ST. CLAIR	206	174			
		CHECKED -	REVISD -			CENTREVILLE AVENUE (NORTH OF NORTHERN ROUNDABOUT)				F.A.P. RTE 809 / F.A.U. RTE 9251 / F.A.U. RTE 9269 ILLINOIS FED. AID PROJECT		
		DATE -	REVISD -			SCALE:		SHEET NO. 1 OF 4 SHEETS		STA. 30+50.00 TO STA. 31+50.00		CONTRACT NO. 76D06