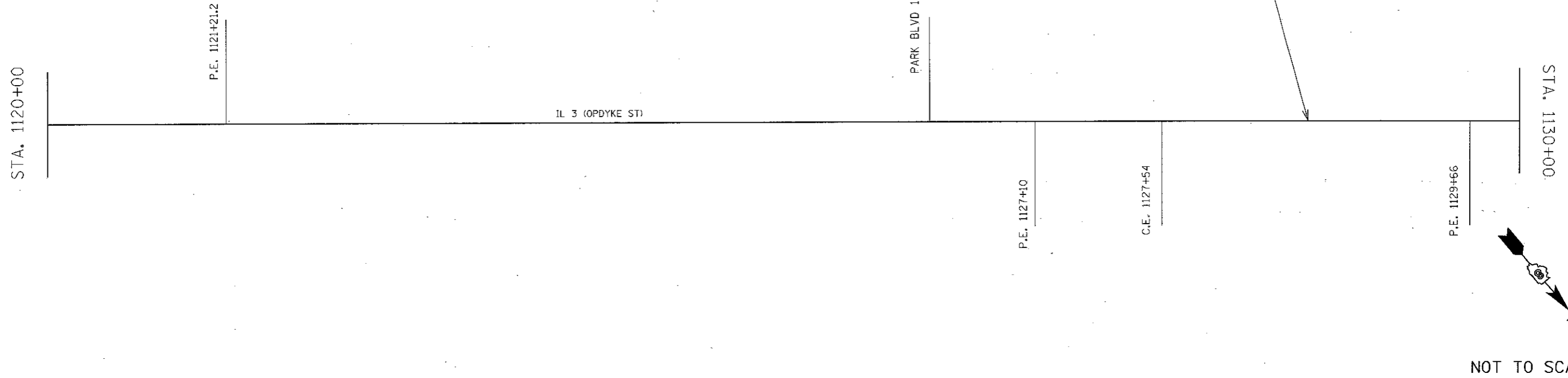


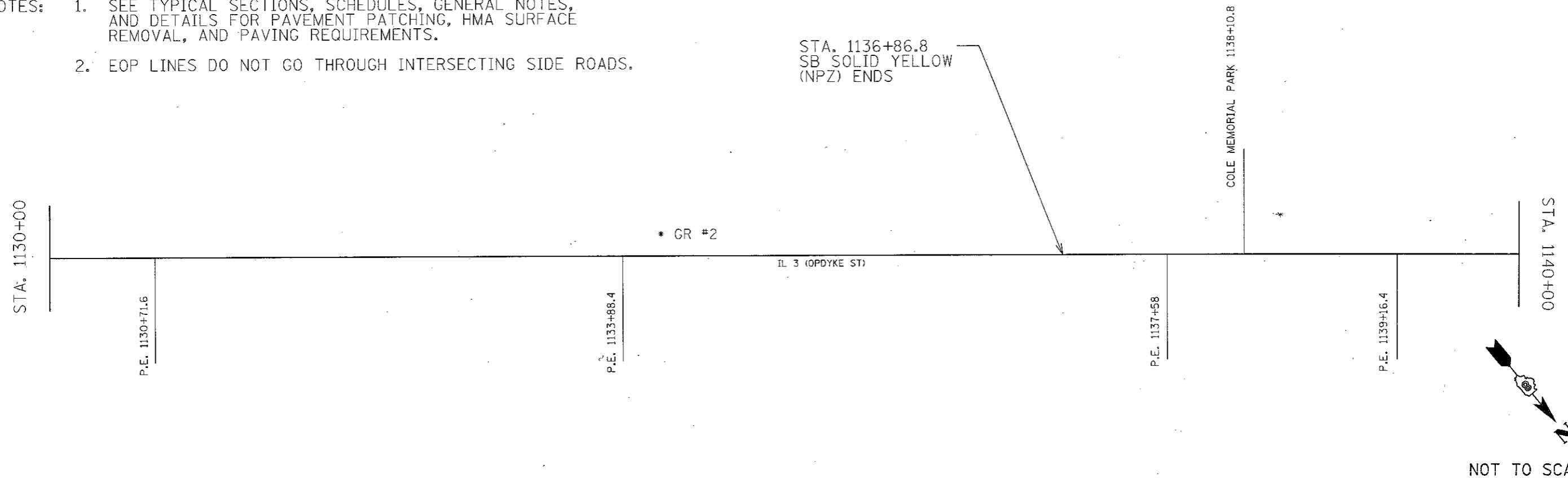
- NOTES: 1. SEE TYPICAL SECTIONS, SCHEDULES, GENERAL NOTES, AND DETAILS FOR PAVEMENT PATCHING, HMA SURFACE REMOVAL, AND PAVING REQUIREMENTS.
 2. EOP LINES DO NOT GO THROUGH INTERSECTING SIDE ROADS.

STA. 1128+54.8
 NB SOLID YELLOW (NPZ) ENDS
 YELLOW SKIP. DASH (10' - 30') STARTS



- NOTES: 1. SEE TYPICAL SECTIONS, SCHEDULES, GENERAL NOTES, AND DETAILS FOR PAVEMENT PATCHING, HMA SURFACE REMOVAL, AND PAVING REQUIREMENTS.
 2. EOP LINES DO NOT GO THROUGH INTERSECTING SIDE ROADS.

STA. 1136+86.8
 SB SOLID YELLOW (NPZ) ENDS



FILE NAME =	USER NAME = karlesol	DESIGNED =	REVISED =
at:\pwork\psidot\karlesol\108254790\d8	6e90-Design\lincoln.dgn	DRAWN =	REVISED =
	PLOT SCALE = 100.0000' / in.	CHECKED =	REVISED =
	PLOT DATE = 3/14/2012	DATE =	REVISED =

STATE OF ILLINOIS
 DEPARTMENT OF TRANSPORTATION

PLAN DIAGRAM

SCALE: NONE SHEET NO. 5 OF 11 SHEETS STA. 1120+00 TO STA. 1140+00

*FAP 312/FAP 861/FAU 9414/FAU 9415			
F.A.P. RTE.	SECTION	COUNTY	TOTAL SHEETS
• 119, 119-1RS-2, (75-1)RS-2		RANDOLPH	37
			SHEET NO. 19
CONTRACT NO. 76E90			
FED. ROAD DIST. NO.		ILLINOIS FED. AID PROJECT	