

STATE OF ILLINOIS  
 DEPARTMENT OF TRANSPORTATION  
 DIVISION OF HIGHWAYS

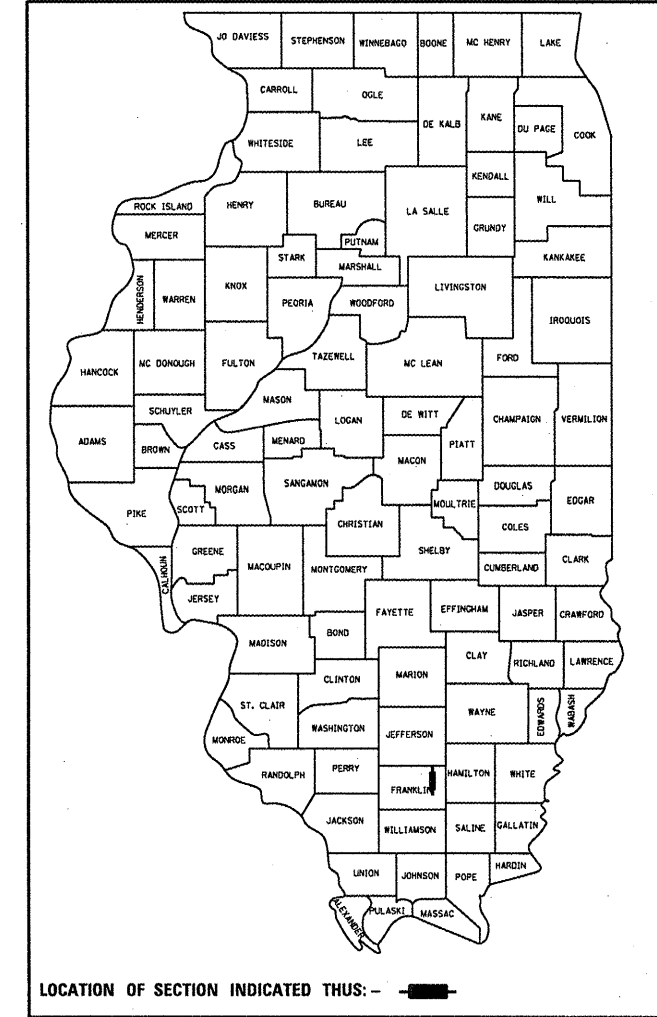
**PROPOSED  
 HIGHWAY PLANS**

FAP ROUTE 853 (IL 14)

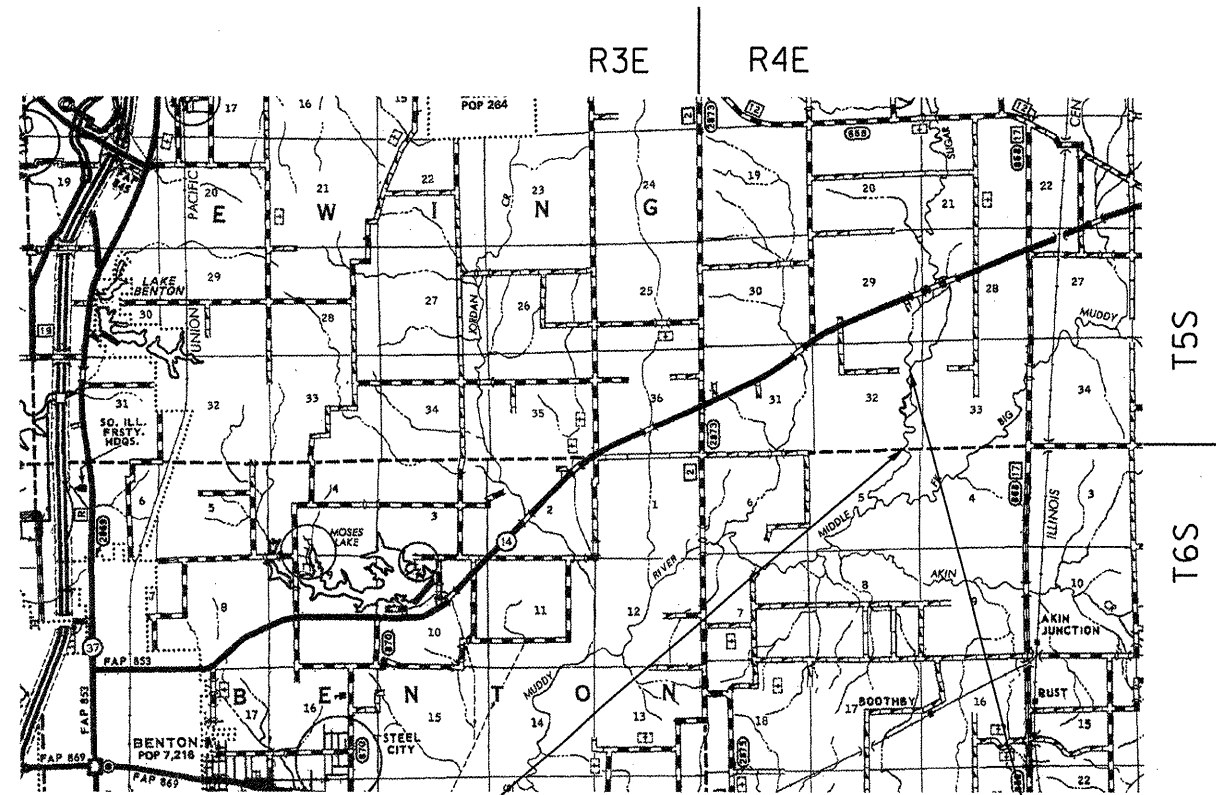
D9 WETLAND SUGAR CAMP 2011-1  
 FRANKLIN COUNTY  
 C-99-004-12

F.A.P. RTE.	SECTION	COUNTY	TOTAL SHEETS	SHEET NO.
853		FRANKLIN	86	1
FED. ROAD DIST. NO.	ILLINOIS	CONTRACT NO. 78278		

D9 WETLAND SUGAR CAMP 2011-1  
 D-99-003-12

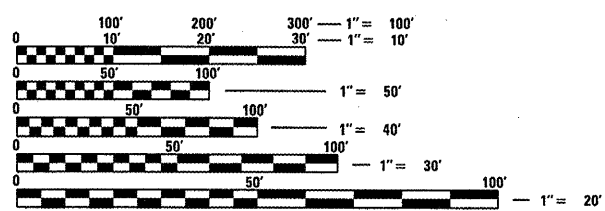


FOR INDEX OF SHEETS, SEE SHEET NO. 3



WETLAND PROJECT BEGINS  
 STA 100+00

WETLAND PROJECT ENDS  
 STA 140+61.98



FULL SIZE PLANS HAVE BEEN PREPARED USING STANDARD ENGINEERING SCALES. REDUCED SIZED PLANS WILL NOT CONFORM TO STANDARD SCALES. IN MAKING MEASUREMENTS ON REDUCED PLANS, THE ABOVE SCALES MAY BE USED.

J.U.L.I.E.  
 JOINT UTILITY LOCATION INFORMATION FOR EXCAVATION  
 1-800-892-0123

TOWNSHIPS: NORTHERN  
 PROJECT ENGINEER: CHARLES STEIN  
 DESIGNER: JOHN BRANDON

CONTRACT NO. 78278

STATE OF ILLINOIS  
 DEPARTMENT OF TRANSPORTATION  
 DIVISION OF HIGHWAYS

SUBMITTED March 12, 2012

Chris Cameron  
 DEPUTY DIRECTOR OF HIGHWAYS, REGION ENGINEER

May 11, 2012  
John D. Baranzelli, P.E.  
 ENGINEER OF DESIGN AND ENVIRONMENT

May 11, 2012  
William R. Frey, Jr.  
 DIRECTOR OF HIGHWAYS, CHIEF ENGINEER

PRINTED BY THE AUTHORITY  
 OF THE STATE OF ILLINOIS