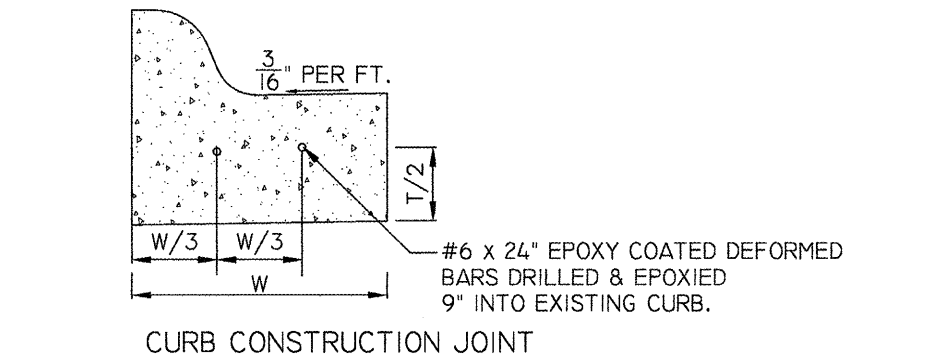
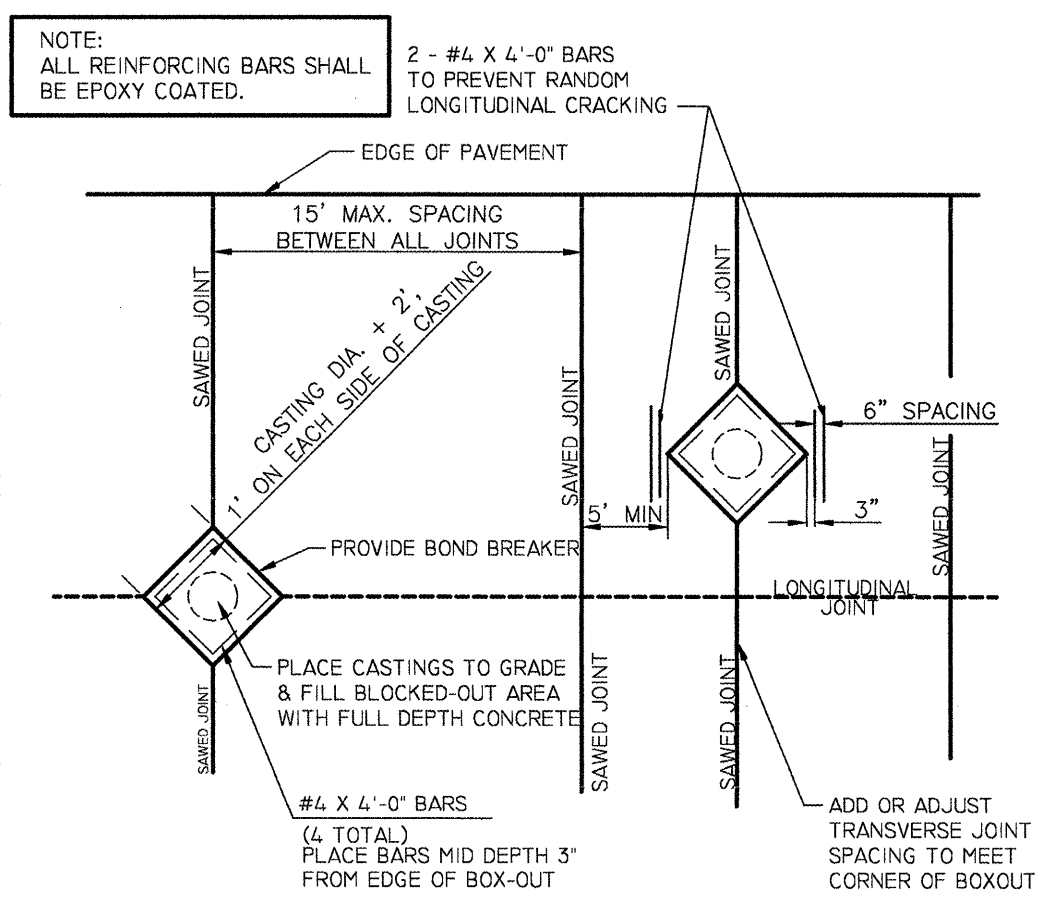


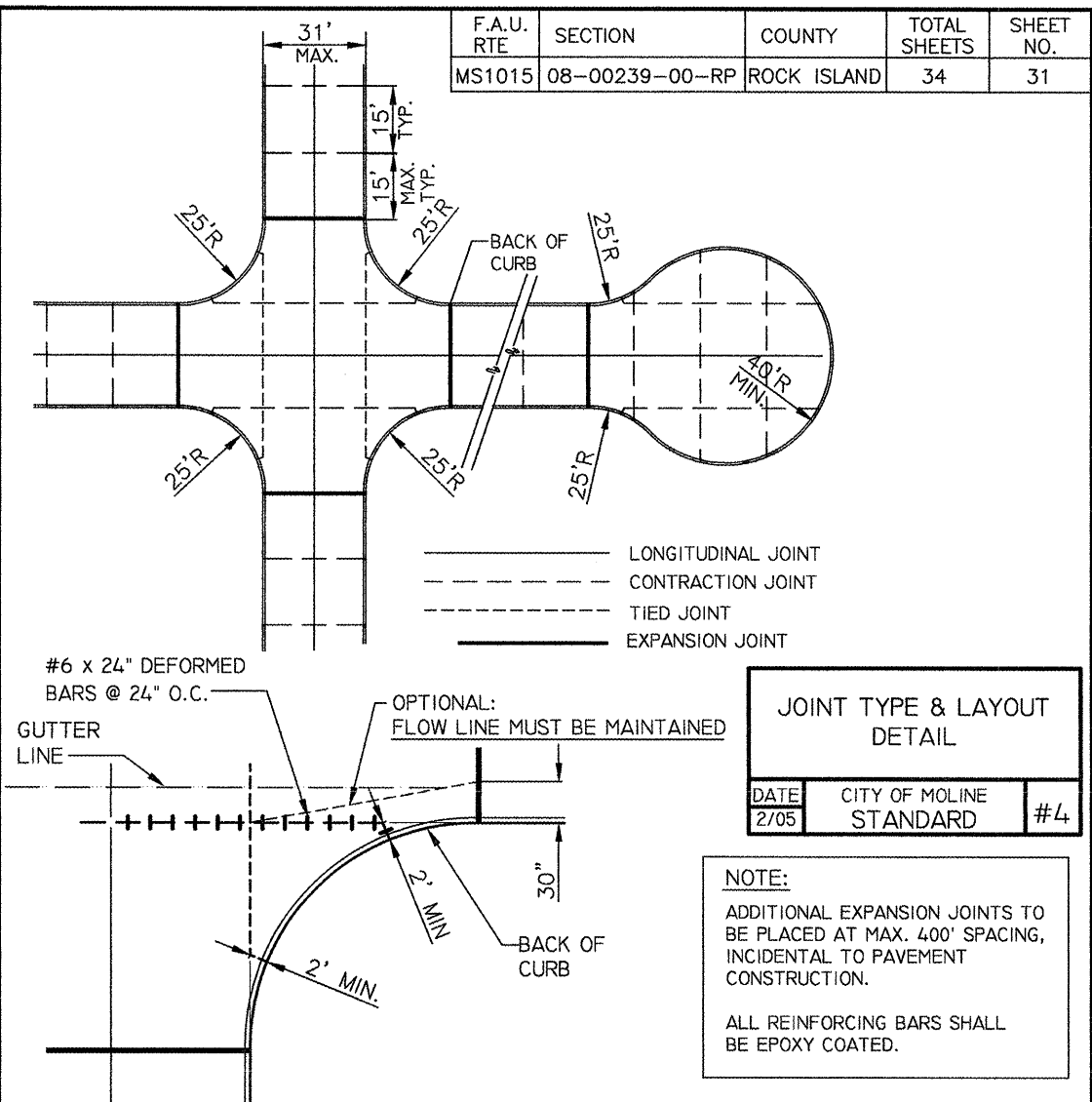
NOTE:
ALL HONEYCOMBED AND OR POROUS AREAS IN BACK OF CURB WILL BE CORRECTED AS DIRECTED BY THE ENGINEER.



| | | |
|--|----------------------|----------------------------|
| | INTEGRAL CURB DETAIL | |
| | DATE 12/05 | CITY OF MOLINE STANDARD #2 |

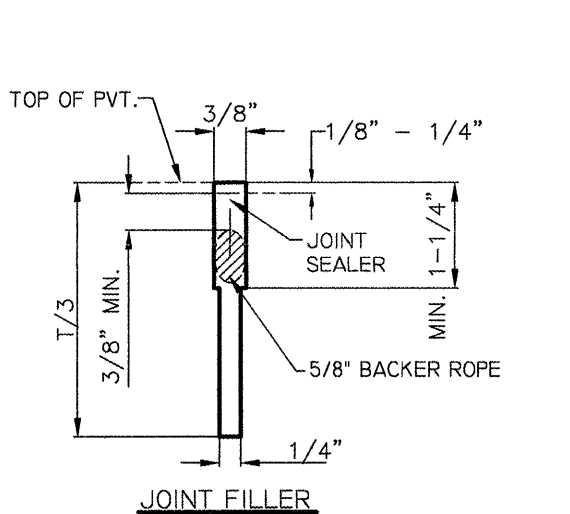


| | |
|------------------------|----------------------------|
| MANHOLE BOX OUT DETAIL | |
| DATE 1/07 | CITY OF MOLINE STANDARD #3 |

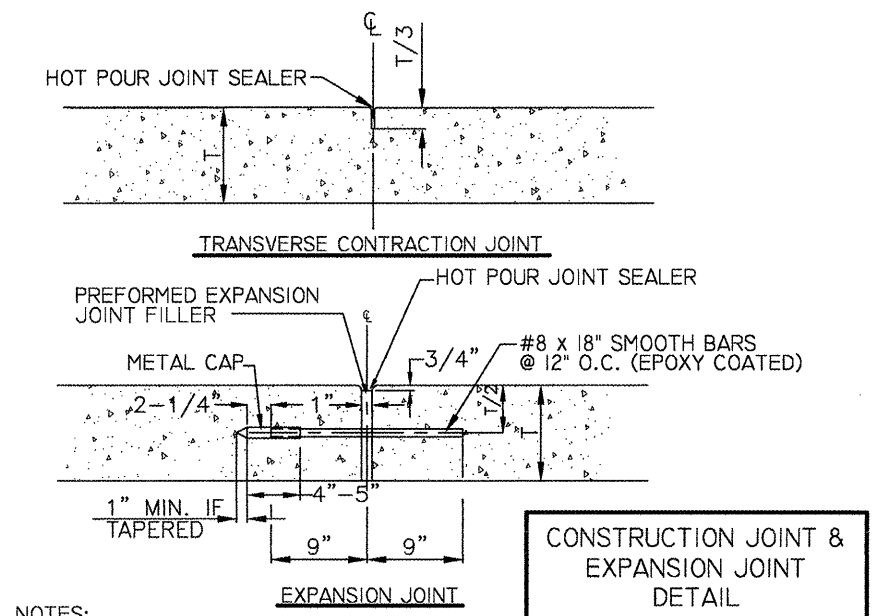


| | | |
|----------------------------|-------------------------|----|
| JOINT TYPE & LAYOUT DETAIL | | |
| DATE 2/05 | CITY OF MOLINE STANDARD | #4 |

NOTE:
ADDITIONAL EXPANSION JOINTS TO BE PLACED AT MAX. 400' SPACING, INCIDENTAL TO PAVEMENT CONSTRUCTION.
ALL REINFORCING BARS SHALL BE EPOXY COATED.

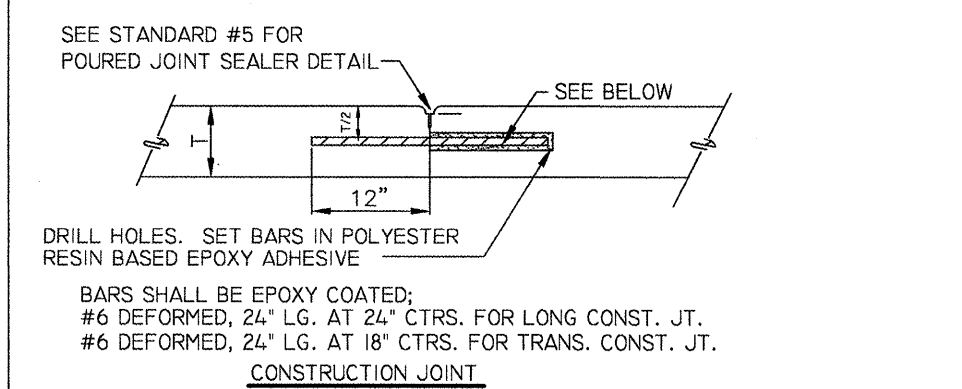


- AFTER SAWING, FLUSH JOINT WITH WATER OR AIR.
- CLEAN BY SAND BLASTING UNTIL SURFACES ARE FREE OF SAWCUTTING FINES
- JUST PRIOR TO INSTALLATION OF BACKER ROPE, BLOW WITH OIL AND WATER FREE COMPRESSED AIR TO ELIMINATE SAND AND WATER.

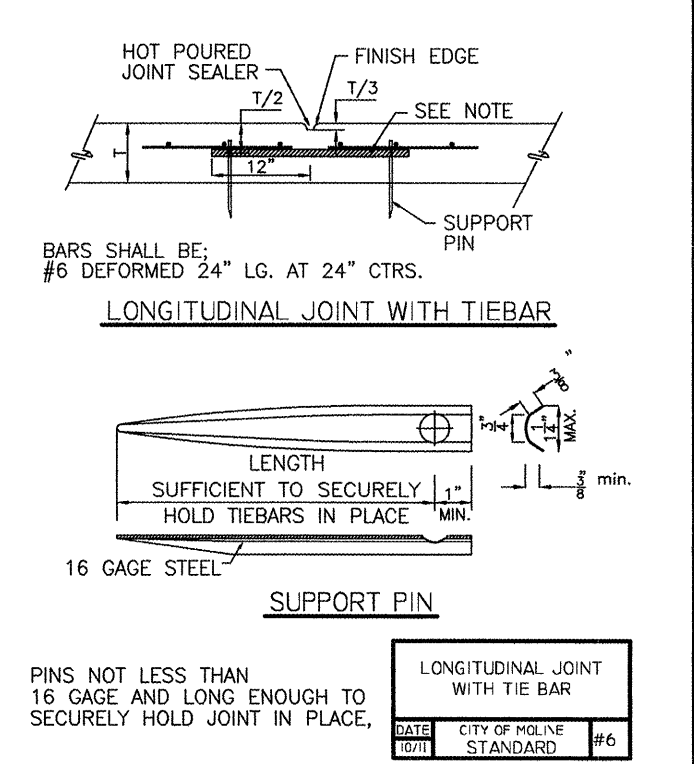


| | |
|---|----------------------------|
| CONSTRUCTION JOINT & EXPANSION JOINT DETAIL | |
| DATE 12/05 | CITY OF MOLINE STANDARD #5 |

NOTES:
HOLES SHALL BE DRILLED IN PREFORMED EXPANSION JOINT FILLER.
NO SLOTS OR GAPS WILL BE ALLOWED.
DOWEL BARS SHALL BE GREASED TO THE SATISFACTION OF THE ENGINEER.



| | |
|--|----------------------------|
| LONGITUDINAL JOINT & TRANSVERSE JOINT DETAIL | |
| DATE 12/05 | CITY OF MOLINE STANDARD #6 |



| | |
|---------------------------------|----------------------------|
| LONGITUDINAL JOINT WITH TIE BAR | |
| DATE 10/11 | CITY OF MOLINE STANDARD #6 |

| | |
|------------------------------------|---|
| | CITY OF MOLINE |
| | DEPARTMENT OF PUBLIC WORKS - ENGINEERING DIVISION |
| | 3635 4TH AVENUE, MOLINE, IL 61265 |
| | (309) 524-2350 |
| CITY ENGINEER - SCOTT HINTON, P.E. | |

| | |
|-----------------------------------|----------|
| RIVERTECH BOULEVARD | |
| 34TH STREET, SOUTH OF RIVER DRIVE | |
| DETAILS | |
| Date | Revision |

| | | | |
|-----------------|----------|---------|---------|
| Date | 12/13/11 | Sheet | 31 |
| Scale | N.T.S. | of | 34 |
| Design Engineer | JC | Project | MFT 239 |