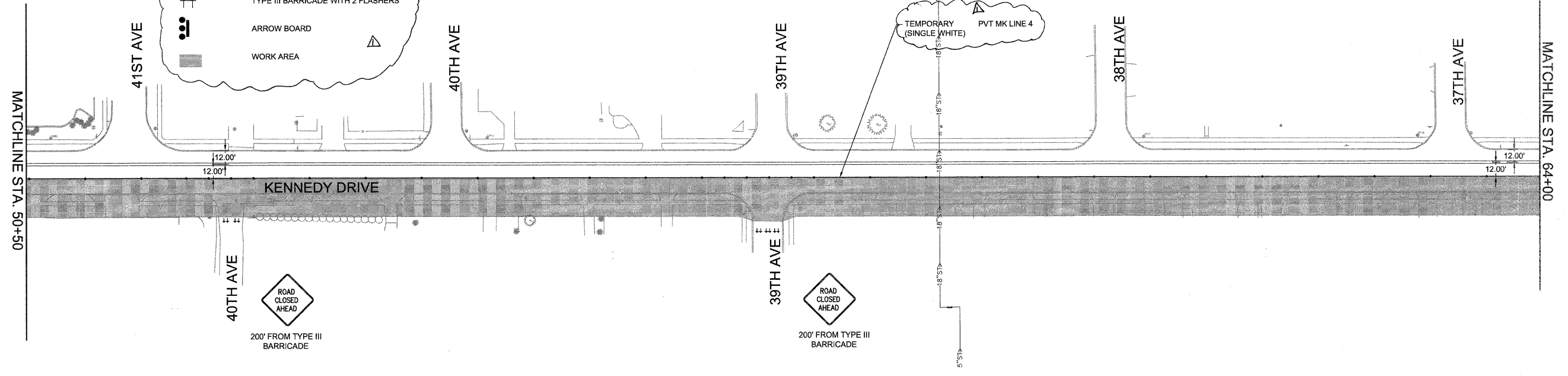


LEGEND

- TYPE 1/TYPE 2 BARRICADE WITH FLASHER
- DRUM WITH FLASHER
- FLAGGER
- TEMPORARY PVT MK LINE 4 (DOUBLE YELLOW)
- TYPE III BARRICADE WITH 2 FLASHERS
- ARROW BOARD
- WORK AREA

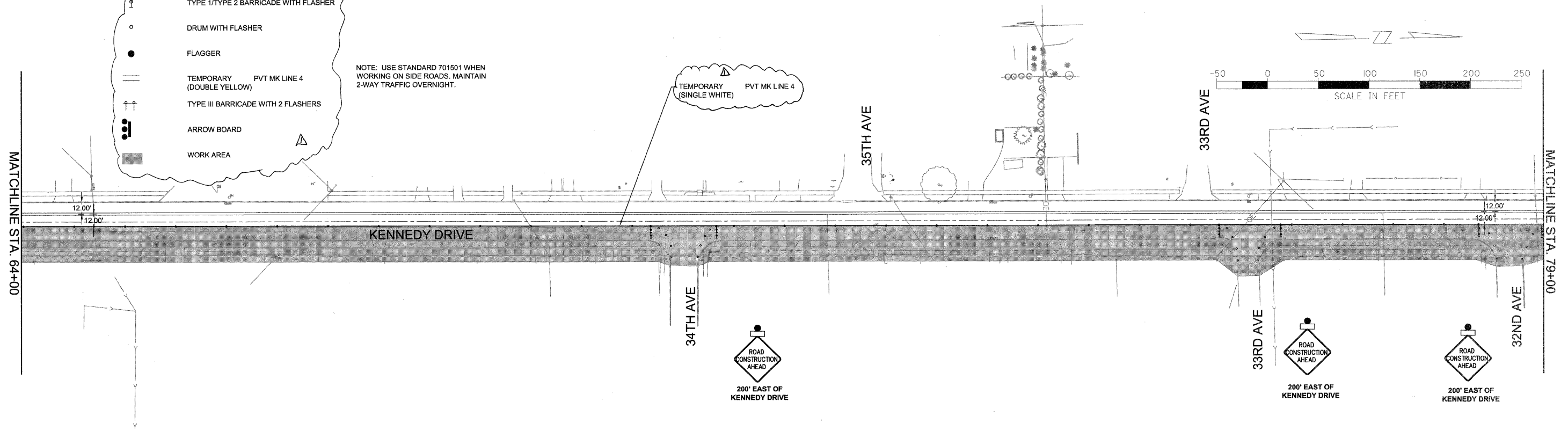
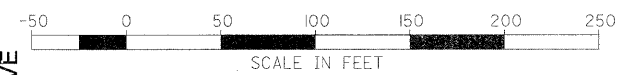
NOTE: USE STANDARD 701501 WHEN WORKING ON SIDE ROADS. MAINTAIN 2-WAY TRAFFIC OVERNIGHT.



LEGEND

- TYPE 1/TYPE 2 BARRICADE WITH FLASHER
- DRUM WITH FLASHER
- FLAGGER
- TEMPORARY PVT MK LINE 4 (DOUBLE YELLOW)
- TYPE III BARRICADE WITH 2 FLASHERS
- ARROW BOARD
- WORK AREA

NOTE: USE STANDARD 701501 WHEN WORKING ON SIDE ROADS. MAINTAIN 2-WAY TRAFFIC OVERNIGHT.



FILE NAME = P:\Projects\MO\311371\NDeg	USER NAME = LJJ	DESIGNED -- PRL	REVISED -- Δ 6-5-12	STATE OF ILLINOIS DEPARTMENT OF TRANSPORTATION	TRAFFIC CONTROL STAGE 3			F.A.U. RTE. 5849	SECTION II-00151-00-RS	COUNTY ROCK ISLAND	TOTAL SHEETS 75	SHEET NO. 42	
	PLOT SCALE = 5000.0000 ' / IN.	CHECKED -- PRL	REVISED --		SCALE:	SHEET 12	OF 23 SHEETS	STA. TO STA.	CONTRACT NO. 85558				
	PLOT DATE = 3/19/2012	DATE -- 17APR2012	REVISED --		ILLINOIS FED. AID PROJECT								