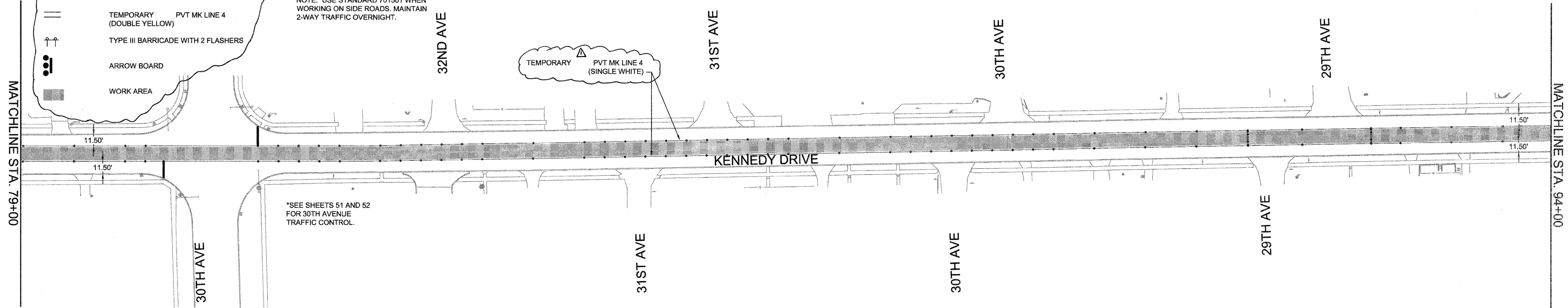
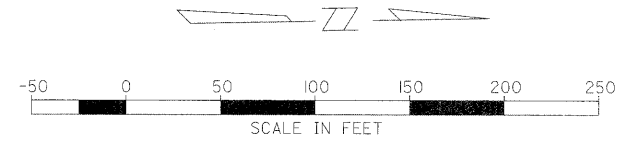


LEGEND

- TYPE I/TYPE 2 BARRICADE WITH FLASHER
- DRUM WITH FLASHER
- FLAGGER
- TEMPORARY PVT MK LINE 4 (DOUBLE YELLOW)
- TYPE III BARRICADE WITH 2 FLASHERS
- ARROW BOARD
- WORK AREA

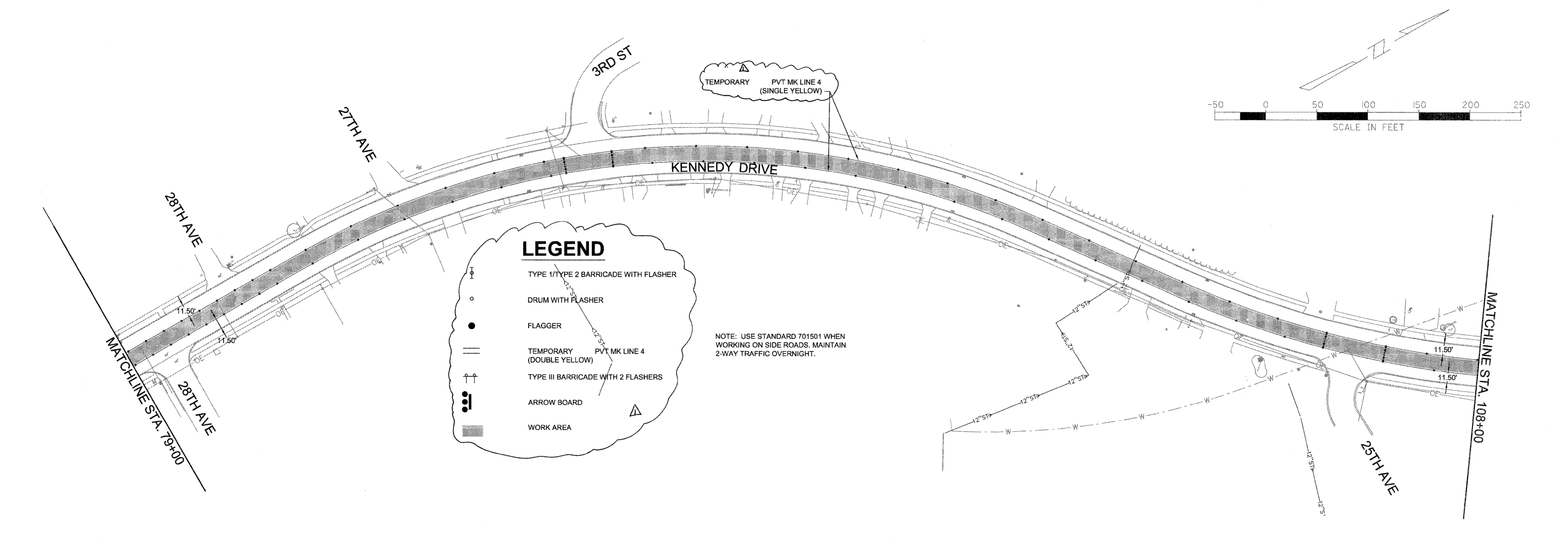
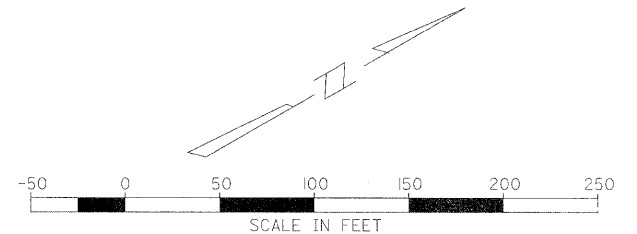
NOTE: USE STANDARD 701501 WHEN WORKING ON SIDE ROADS. MAINTAIN 2-WAY TRAFFIC OVERNIGHT.



LEGEND

- TYPE I/TYPE 2 BARRICADE WITH FLASHER
- DRUM WITH FLASHER
- FLAGGER
- TEMPORARY PVT MK LINE 4 (DOUBLE YELLOW)
- TYPE III BARRICADE WITH 2 FLASHERS
- ARROW BOARD
- WORK AREA

NOTE: USE STANDARD 701501 WHEN WORKING ON SIDE ROADS. MAINTAIN 2-WAY TRAFFIC OVERNIGHT.



| | | | | | | | | | | | | |
|--|-------------------------------------|-------------------|----------------------------|---|----------------------------|-----------------------|------------------|---------------------------|--------------------|-----------------|--------------|--|
| FILE NAME = P:\Projects\MO\3113710\DWG | USER NAME = LJJ | DESIGNED -- PRL | REVISED -- Δ 6-5-12 | STATE OF ILLINOIS DEPARTMENT OF TRANSPORTATION | TRAFFIC CONTROL STAGE 4 | | F.A.J. RTE. 5849 | SECTION II-0051-00-RS | COUNTY ROCK ISLAND | TOTAL SHEETS 75 | SHEET NO. 49 | |
| | PLOT SCALE = 50:0.0000 ' = 1" / IN. | DRAWN -- PRL | REVISED -- | | SCALE: | SHEET 19 OF 23 SHEETS | STA. TO STA. | ILLINOIS FED. AID PROJECT | | | | |
| | PLOT DATE = 3/19/2012 | CHECKED -- PRL | REVISED -- | | | | | | | | | |
| | | DATE -- 17APR2012 | REVISED -- | | | | | | | | | |
| CONTRACT NO. 85558 | | | | | | | | | | | | |