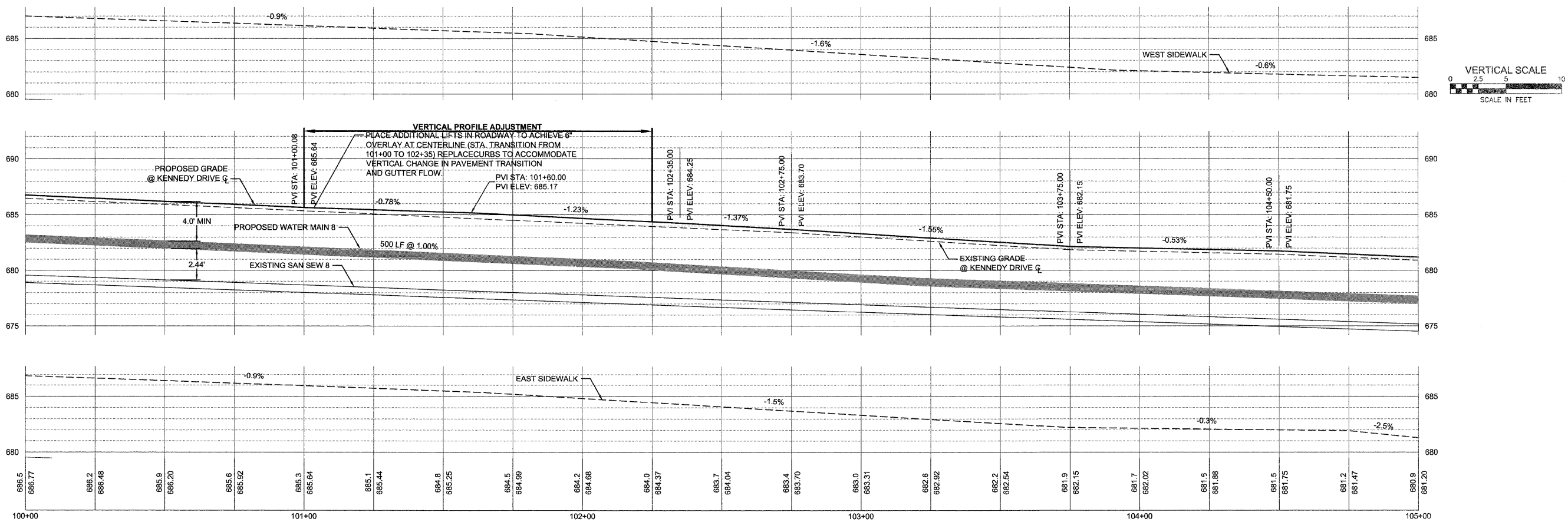


CURVE DATA
 $\Delta = 53^{\circ}44'15.60''$
 $T = 400.25'$
 $L = 740.94'$
 $R = 790.00'$
 $E = 95.61'$
 $CH = 714.08$
 $CH B = N27^{\circ}07'10''E$
 $PC STA = 95+97.08$
 $PI STA = 99+97.33$
 $PT STA = 103+38.02$



FILE NAME =
 P:\Projects\MD\3113719\DWG

USER NAME =	DESIGNED — RAM	REVISED —
PLOT SCALE =	DRAWN — LJJ	REVISED —
PLOT DATE =	CHECKED — PRL	REVISED —
	DATE — 13APR2012	REVISED —

STATE OF ILLINOIS
 DEPARTMENT OF TRANSPORTATION

PLAN AND PROFILE

SCALE: SHEET 12 OF 18 SHEETS STA. 100+00 TO STA. 105+00

F.A.U. RTE. 5849	SECTION II-0015-00-RS	COUNTY ROCK ISLAND	TOTAL SHEETS 75	SHEET NO. 24
ILLINOIS FED. AID PROJECT			CONTRACT NO. 85558	