



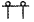


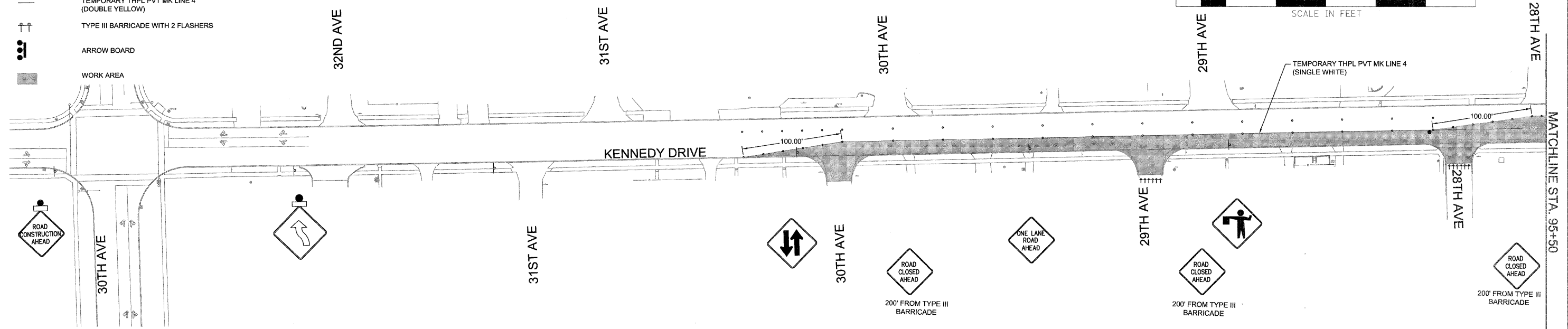


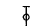



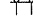


LEGEND

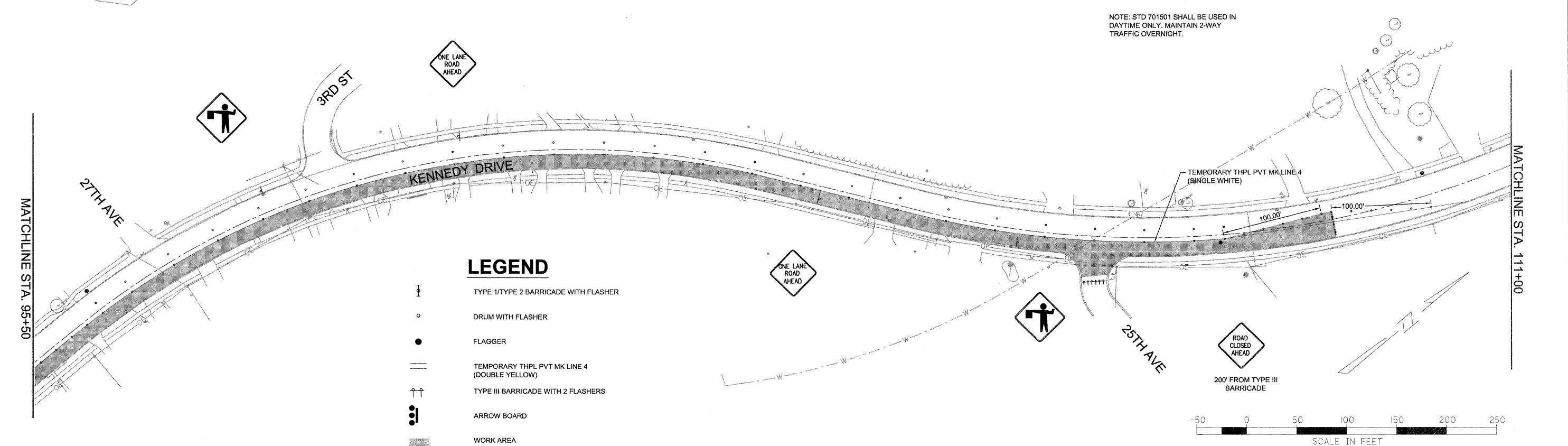
-  TYPE 1/TYPE 2 BARRICADE WITH FLASHER
-  DRUM WITH FLASHER
-  FLAGGER
-  TEMPORARY THPL PVT MK LINE 4 (DOUBLE YELLOW)
-  TYPE III BARRICADE WITH 2 FLASHERS
-  ARROW BOARD
-  WORK AREA



NOTE: STD 701501 SHALL BE USED IN DAYTIME ONLY. MAINTAIN 2-WAY TRAFFIC OVERNIGHT.

LEGEND

-  TYPE 1/TYPE 2 BARRICADE WITH FLASHER
-  DRUM WITH FLASHER
-  FLAGGER
-  TEMPORARY THPL PVT MK LINE 4 (DOUBLE YELLOW)
-  TYPE III BARRICADE WITH 2 FLASHERS
-  ARROW BOARD
-  WORK AREA



NOTE: STD 701501 SHALL BE USED IN DAYTIME ONLY. MAINTAIN 2-WAY TRAFFIC OVERNIGHT.

FILE NAME = PA\ProJects\M0\3113718\DWG	USER NAME =	DESIGNED — PRL	REVISED —
		DRAWN — PRL	REVISED —
		CHECKED — PRL	REVISED —
		DATE — 17APR2012	REVISED —

STATE OF ILLINOIS
DEPARTMENT OF TRANSPORTATION

TRAFFIC CONTROL STAGE 1A	
SCALE:	SHEET 1 OF 23 SHEETS STA. TO STA.

F.A.U. RTE. 5849	SECTION II-0015I-00-RS	COUNTY ROCK ISLAND	TOTAL SHEETS 75	SHEET NO. 31
CONTRACT NO. 85558				ILLINOIS FED. AID PROJECT