
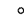





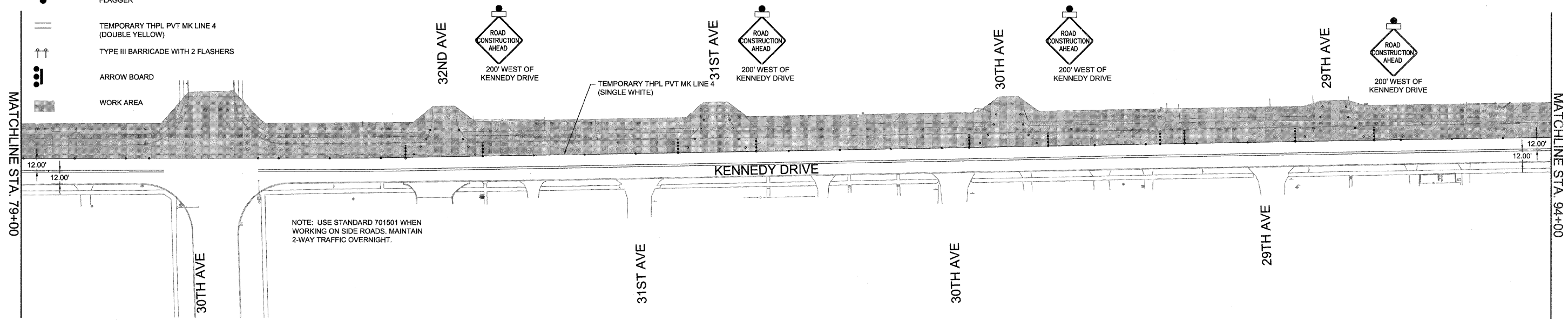
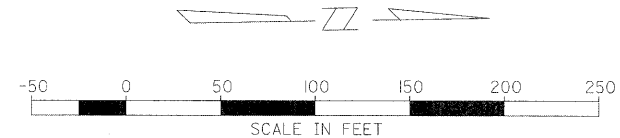
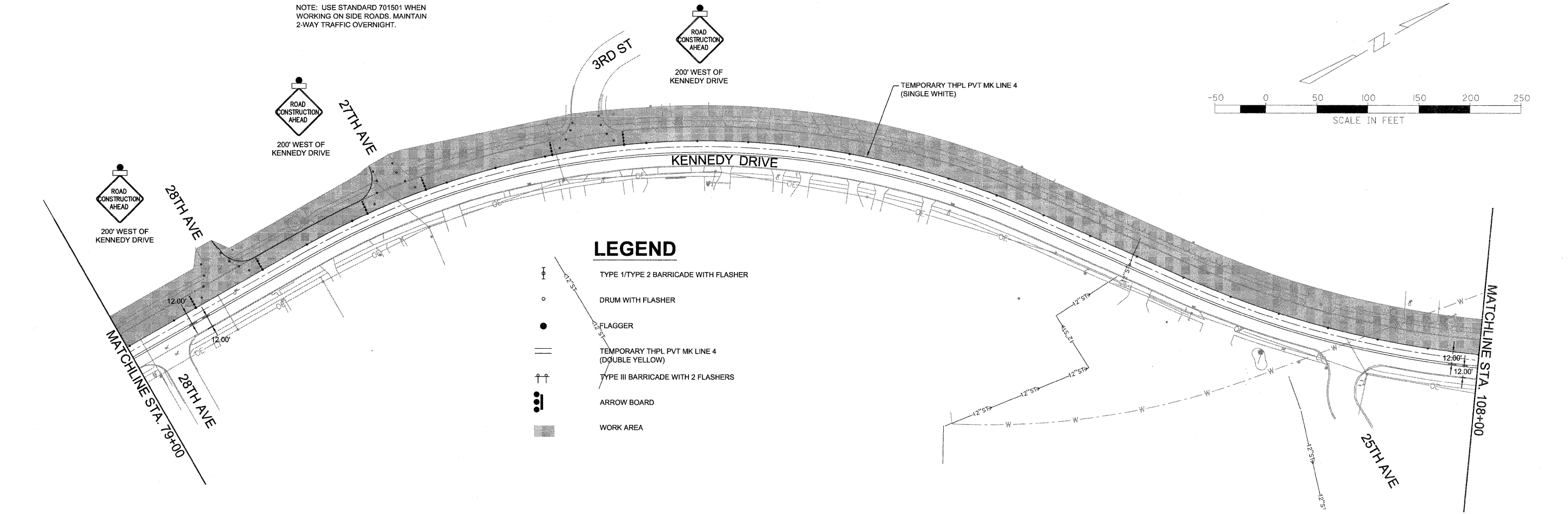
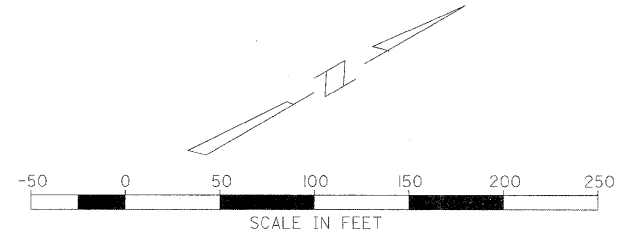


# LEGEND




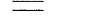



-  TYPE 1/TYPE 2 BARRICADE WITH FLASHER
-  DRUM WITH FLASHER
-  FLAGGER
-  TEMPORARY THPL PVT MK LINE 4 (DOUBLE YELLOW)
-  TYPE III BARRICADE WITH 2 FLASHERS
-  ARROW BOARD
-  WORK AREA



NOTE: USE STANDARD 701501 WHEN WORKING ON SIDE ROADS. MAINTAIN 2-WAY TRAFFIC OVERNIGHT.



# LEGEND

-  TYPE 1/TYPE 2 BARRICADE WITH FLASHER
-  DRUM WITH FLASHER
-  FLAGGER
-  TEMPORARY THPL PVT MK LINE 4 (DOUBLE YELLOW)
-  TYPE III BARRICADE WITH 2 FLASHERS
-  ARROW BOARD
-  WORK AREA

FILE NAME = P:\Projects\MD\3113710\DWG

USER NAME =  
 PLOT SCALE =  
 PLOT DATE =

DESIGNED -- PRL  
 DRAWN -- PRL  
 CHECKED -- PRL  
 DATE -- 17APR2012

REVISED --  
 REVISED --  
 REVISED --  
 REVISED --

STATE OF ILLINOIS  
 DEPARTMENT OF TRANSPORTATION

TRAFFIC CONTROL  
 STAGE 2  
 SCALE: SHEET 7 OF 23 SHEETS STA. TO STA.

F.A.U. RTE. 5849	SECTION II-00151-00-RS	COUNTY ROCK ISLAND	TOTAL SHEETS 75	SHEET NO. 37
CONTRACT NO. 85558				
ILLINOIS FED. AID PROJECT				