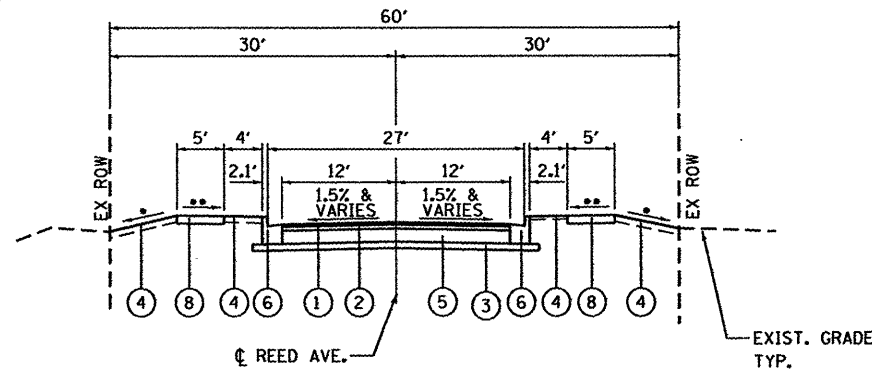


**EXISTING APPROACH ROADWAY
TYPICAL SECTION**

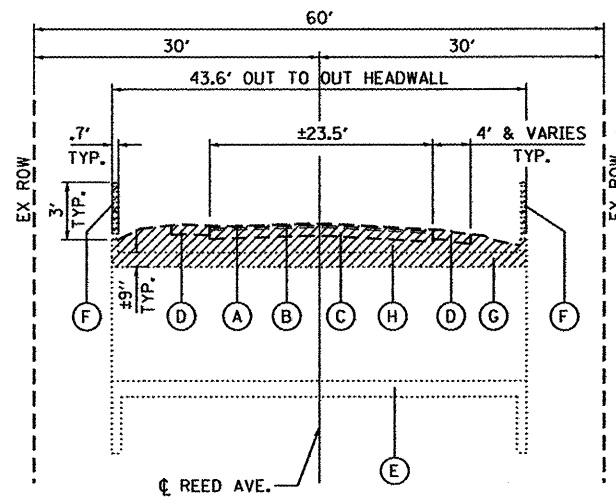
STA. 103+46.33 TO STA. 104+42.02
STA. 104+75.66 TO STA. 106+37.76



**PROPOSED APPROACH ROADWAY
TYPICAL SECTION**

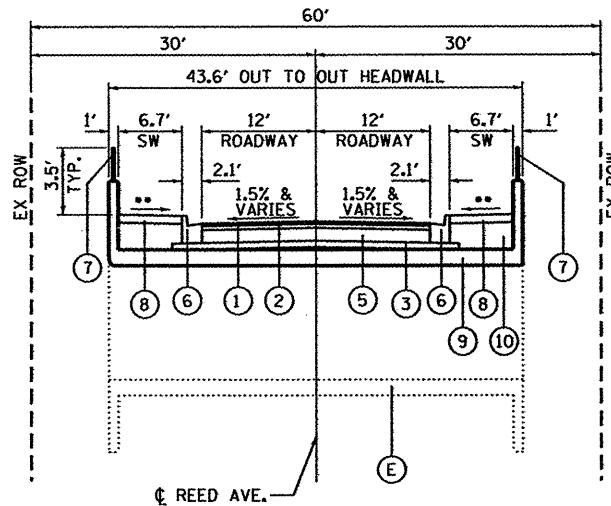
STA. 103+46.33 TO STA. 104+42.02
STA. 104+75.66 TO STA. 106+37.76

- 3:1 & VARIES
- ** 2.0% MAX.



**EXISTING ROADWAY
TYPICAL SECTION AT CULVERT**

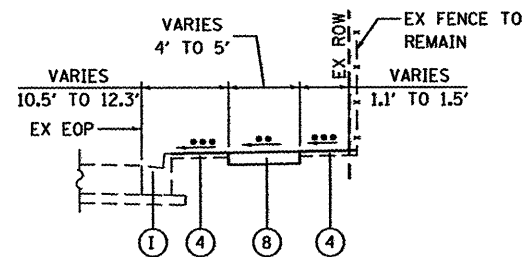
STA. 104+42.02 TO STA. 104+75.66



**PROPOSED ROADWAY
TYPICAL SECTION AT CULVERT**

STA. 104+42.02 TO STA. 104+75.66

- ** 2.0% MAX.



**PROPOSED TYPICAL SECTION
AT SIDEWALK - 10TH STREET**

(LOOKING NORTH)
** 2.0% MAX.
*** MATCH EXISTING (±)

NOTES

- I. SEE CROSS SECTIONS FOR ADDITIONAL INFORMATION.
- II. SEE STRIPING, EROSION CONTROL & RESTORATION PLAN FOR LIMITS
- III. SUBBASE GRANULAR MATERIAL, TYPE B4 AND AGGREGATE BASE COURSE, TYPE A 8" OVER THE CULVERT SHALL CONFORM TO SECTIONS 311 AND 351 RESPECTIVELY, EXCEPT THAT COMPACTION SHALL BE ACHIEVED WITH A LIGHT WEIGHT MECHANICAL TAMPER, ROLLER OR VIBRATORY SYSTEM TO THE SATISFACTION OF THE ENGINEER.

EXISTING LEGEND

- (A) EX HMA SURFACE (THICKNESS VARIES ± 1/4")
- (B) EX HMA BINDER (THICKNESS VARIES ± 1/4")
- (C) EX AGGREGATE BASE (± 5" THICK)
- (D) EX AGGREGATE AND GRASS SHOULDER - REMOVAL COST INCLUDED IN "PAVEMENT REMOVAL"
- (E) EX TRIPLE CELL 10' X 6' CAST IN PLACE REINFORCED CONCRETE BOX CULVERT
- (F) EX STEEL RAILING TO BE REMOVED (COST FOR REMOVAL INCLUDED IN "CONCRETE REMOVAL")
- (G) EX CULVERT TOP SLAB TO BE REMOVED. PAID FOR AS "CONCRETE REMOVAL."
- (H) EX FILL ON CULVERT - REMOVAL COST INCLUDED IN "PAVEMENT REMOVAL"

PROPOSED LEGEND

- (1) HOT-MIX ASPHALT SURFACE COURSE MIX "C" N50 @ 1 1/2"
- (2) HOT-MIX ASPHALT BINDER COURSE IL - 12.5, N50 @ 2 1/2"
- (3) SUBBASE GRANULAR MATERIAL, TYPE B 4" (NOTE III)
- (4) TOPSOIL FURNISH & PLACE 4" WITH SEEDING CLASS 2A (NOTE II)
- (5) AGGREGATE BASE COURSE, TYPE A 8"
- (6) COMBINATION CONCRETE CURB AND GUTTER, TYPE B-6.18
- (7) PARAPET RAILING
- (8) PORTLAND CEMENT CONCRETE SIDEWALK, 5"
- (9) PR. CULVERT TOP SLAB AND PARAPETS PAID FOR AS "CONCRETE BOX CULVERTS"
- (10) POROUS GRANULAR EMBANKMENT, SPECIAL

INDICATES ITEMS TO BE REMOVED

HOT-MIX ASPHALT MIXTURE REQUIREMENTS		
MIXTURE USE	SURFACE	BINDER
PGs	PG 64-22	PG 64-22
DESIGN AIR VOIDS	3.0 @ N50	3.0 @ N50
MIXTURE COMPOSITION (GRADIATION MIXTURE)	IL 9.5 OR 12.5	IL 9.5 OR 12.5
FRICTION AGGREGATE	C	N/A
20 YEAR ESAL	0.0	0.0
MIX UNIT WEIGHT	112 LBS/SY/IN	

COMPANY NAME: Kevin W. Jett
PROJECT CONTACT: City of Rockford
CLIENT: City of Rockford
DATE PLOTTED: 3/23/2012 1:40:14 PM
FILE NAME: 86100434-TYP.dgn
PLOT DRIVER: pdfplot
PEN TABLE: standard.ctb



USER NAME = whood	DESIGNED - KMA	REVISED -
FILE NAME = 86100434-TYP.dgn	DRAWN - WJH	REVISED -
PLOT SCALE = 1"=10'	CHECKED - RGD	REVISED -
PLOT DATE = 3/23/2012	DATE - 3/26/12	REVISED -

CITY OF ROCKFORD

REED AVENUE OVER SOUTHEAST DRAINAGEWAY
TYPICAL SECTIONS

SCALE: 1"=10' SHEET NO. OF SHEETS STA. TO STA.

M.S.	SECTION	COUNTY	TOTAL SHEETS	SHEET NO.
3634	09-00558-00-BR	WINNEBAGO	16	4
CONTRACT NO. 85562				
FED. ROAD DIST. NO. 2 ILLINOIS FED. AID PROJECT				