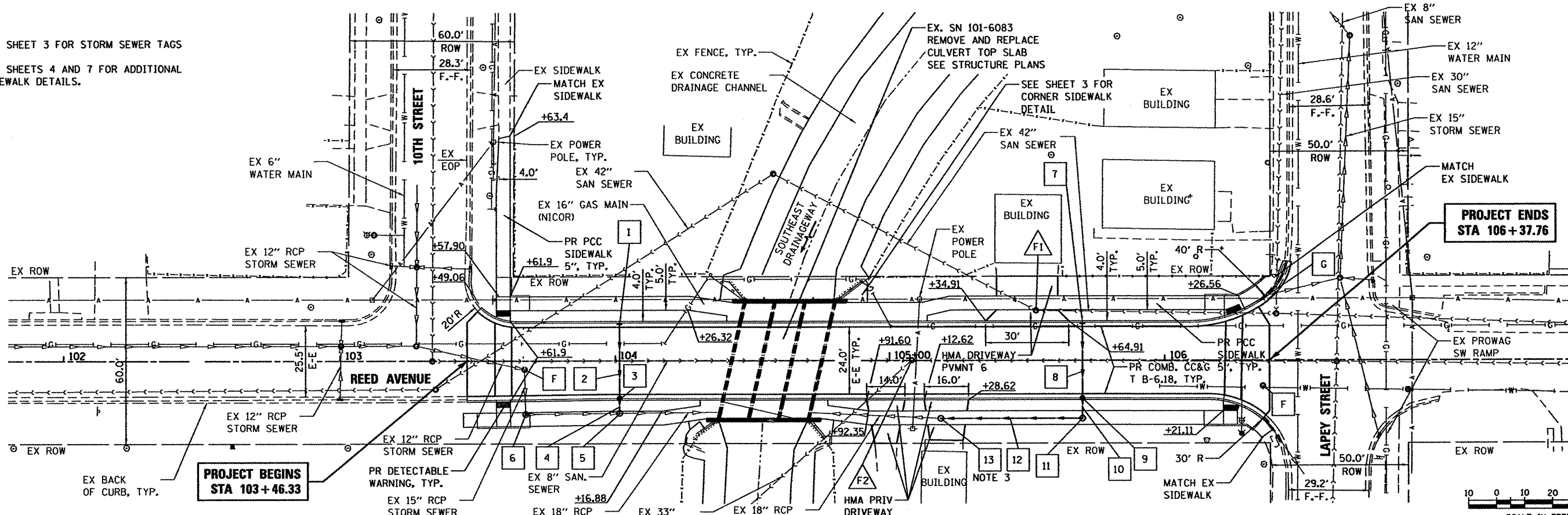


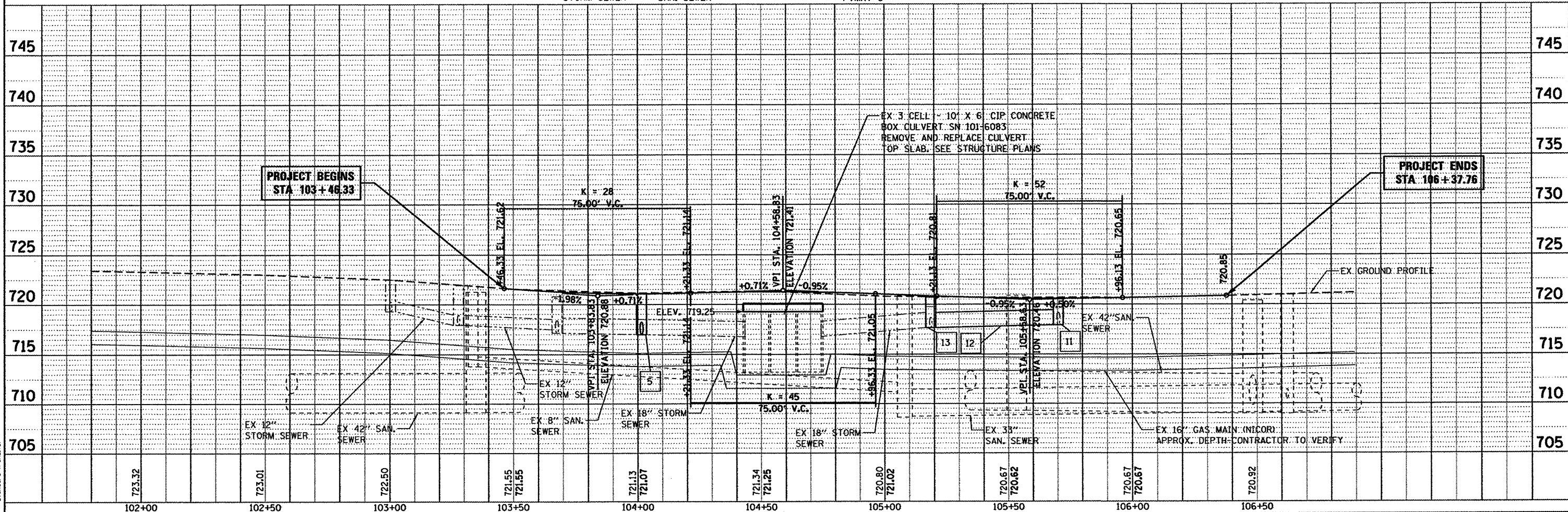
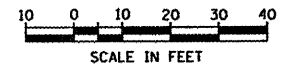
NOTES:

- SEE SHEET 3 FOR STORM SEWER TAGS
- SEE SHEETS 4 AND 7 FOR ADDITIONAL SIDEWALK DETAILS.



PROJECT BEGINS
STA 103+46.33

PROJECT ENDS
STA 106+37.76



PROJECT BEGINS
STA 103+46.33

PROJECT ENDS
STA 106+37.76

COMPANY NAME: HRGreen.com
PROJECT CONTACT: Kevin M. Artt
CLIENT: City of Rockford
DATE PLOTTED: 3/26/2012 10:54:11 PM
FILE NAME: 86108434-ppp01.dgn
PLOT SCALE: 1"=20'
PLOT DATE: 3/26/2012

USER NAME =	DESIGNED -	REVISED -
FILE NAME = 86108434-ppp01.dgn	DRAWN - WJH	REVISED -
PLOT SCALE = 1"=20'	CHECKED - RGD	REVISED -
PLOT DATE = 3/26/2012	DATE - 3/26/12	REVISED -

CITY OF ROCKFORD

**REED AVENUE OVER THE SOUTHEAST DRAINAGEWAY
PLAN AND PROFILE**

SCALE: 1"=20' SHEET NO. 1 OF 1 SHEETS STA. 102+00 TO STA. 106+88.91

M.S.	SECTION	COUNTY	TOTAL SHEETS	SHEET NO.
3634	09-00558-00-BR	WINNEBAGO	16	6
CONTRACT NO. 85562				
FED. ROAD DIST. NO. 2 (ILLINOIS) FED. AID PROJECT				