

**EROSION CONTROL NOTES**

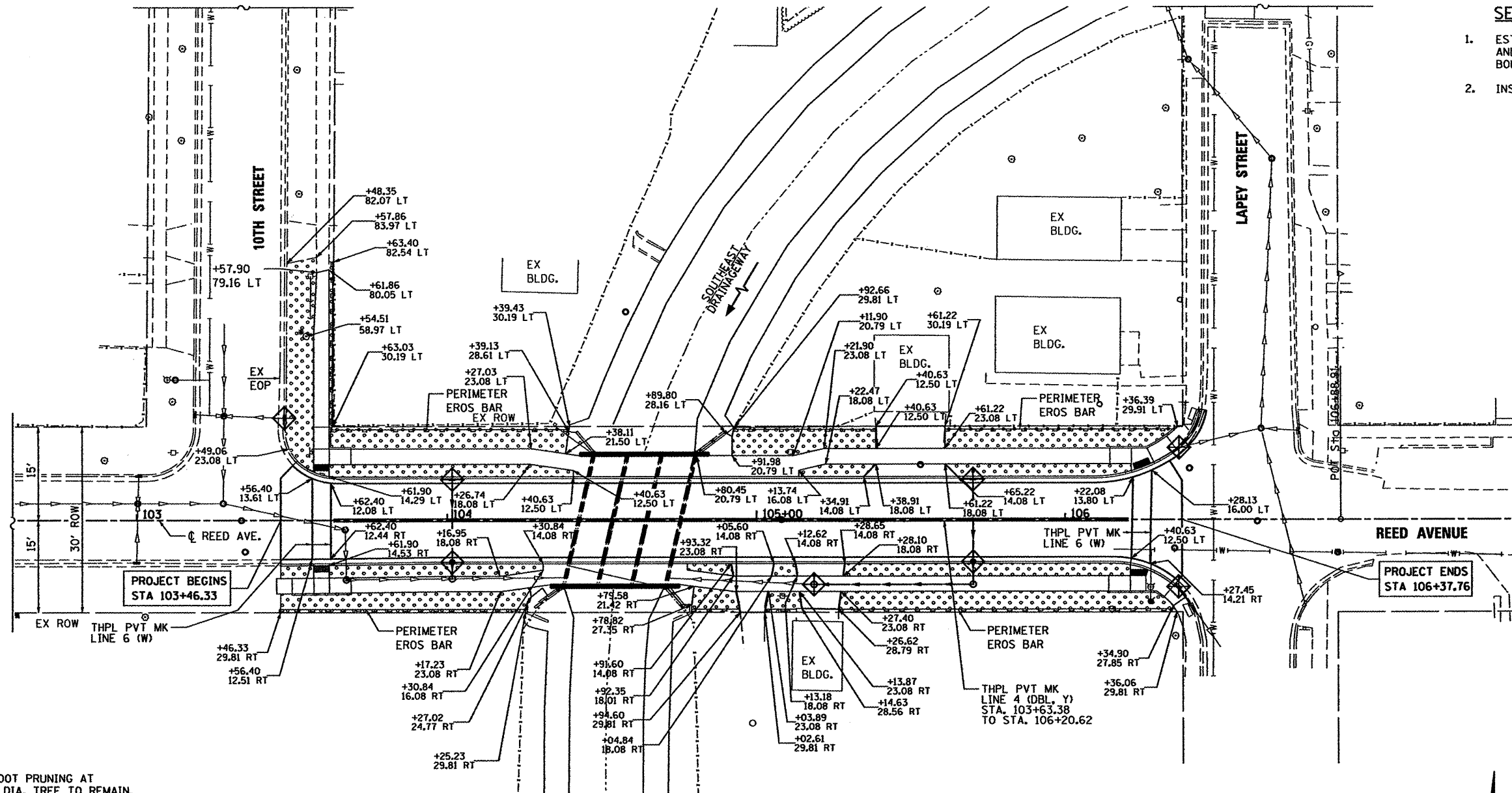
1. THE CONTRACTOR WILL BE REQUIRED TO IMPLEMENT AND MAINTAIN EROSION CONTROL MEASURES IMMEDIATELY AFTER STRIPPING OF EXISTING VEGETATION.
2. STOCKPILES OF SOIL AND OTHER BUILDING MATERIALS TO REMAIN IN PLACE MORE THAN THREE (3) DAYS SHALL BE FURNISHED WITH EROSION AND SEDIMENT CONTROL MEASURES (I.E. PERIMETER SILT FENCE). STOCKPILES TO REMAIN IN PLACE FOR 14 DAYS OR MORE SHALL RECEIVE TEMPORARY SEEDING.
3. THE CONTRACTOR SHALL TAKE ALL PRECAUTIONS TO PREVENT POLLUTION OF STORM WATER AND SHALL FOLLOW IEPA REGULATIONS & IDOT CONSTRUCTION MEMORANDUM NO. 06-60.
4. STABILIZATION MEASURES SHALL BE INITIATED WITHIN 7 DAYS OF CONSTRUCTION ACTIVITY TEMPORARILY OR PERMANENTLY CEASING IN AREAS WHERE IT WILL NOT OCCUR FOR A PERIOD OF 14 OR MORE CALENDAR DAYS.
5. THE SOIL EROSION AND SEDIMENT CONTROL PRACTICES WILL BE INSPECTED WEEKLY AND AFTER 1/2 INCH OF RAIN OR MORE BY THE INDIVIDUAL ON SITE IN CHARGE OF SOIL EROSION AND SEDIMENT CONTROL DURING THE CONSTRUCTION OF THE PROJECT.
6. SILT FENCE SHALL BE INSTALLED FOLLOWING THE COMPLETION AND STABILIZATION OF THE STORMWATER FACILITIES AND WILL REMAIN IN PLACE UNTIL THE CONTRIBUTING AREA IS STABILIZED.
7. ALL ADJACENT STREETS MUST BE KEPT CLEAR OF DEBRIS. INSPECTED DAILY AND CLEANED WHEN NECESSARY OR AS DIRECTED BY THE ENGINEER.
8. ALL SOIL EROSION AND SEDIMENT CONTROL PRACTICES ARE REFERENCED FROM THE ILLINOIS URBAN MANUAL.
9. THE CONTRACTOR WILL BE REQUIRED TO HAVE A DESIGNATED WASHOUT AREA DURING ALL CONCRETE POURS.

**LEGEND**

	PERIMETER EROSION BARRIER		FINAL RESTORATION OF DISTURBED AREAS
	EXISTING R.O.W.	- TOPSOIL FURNISH AND PLACE, 4"	- SEEDING CLASS 2A
		- EROSION CONTROL BLANKET	
			INLET AND PIPE PROTECTION

**TEMPORARY EROSION CONTROL SEQUENCE OF CONSTRUCTION**

1. ESTABLISH TEMPORARY EROSION CONTROL MEASURES AND ERECT PERIMETER EROSION BARRIER ALONG SITE BOUNDARIES PRIOR TO EARTHWORK.
2. INSTALL TEMPORARY EROSION CONTROL SEEDING.



\* TREE ROOT PRUNING AT EX 20" DIA. TREE TO REMAIN. THIS WORK SHALL BE DONE IN ACCORDANCE WITH THE APPLICABLE PORTIONS OF SECTION 201 OF THE STANDARD SPECIFICATION AND AS DIRECTED BY THE ENGINEER. THE COST SHALL BE INCLUDED IN THE COST OF "PCC SIDEWALK 5".

COMPANY NAME: Kevin M. Jeff  
 PROJECT CONTACT: 3175  
 DATE PLOTTED: 3/23/2012  
 PLOT NAME: 86100434-Erosion  
 PLOT DRIVER: default  
 PEN TABLE: standard-trans.tbl



USER NAME = whood	DESIGNED - KMA	REVISED -
FILE NAME = 86100434-Erosion	DRAWN - WJH	REVISED -
PLOT SCALE = 1"=20'	CHECKED - RGD	REVISED -
PLOT DATE = 3/23/2012	DATE - 3/26/12	REVISED -

**CITY OF ROCKFORD**

<b>REED AVENUE OVER SOUTHEAST DRAINAGEWAY</b>	
<b>EROSION CONTROL, PAVEMENT MARKING AND RESTORATION PLAN</b>	
SCALE: 1"=20'	SHEET NO. OF SHEETS STA. TO STA.

M.S.	SECTION	COUNTY	TOTAL SHEETS	SHEET NO.
3634	09-00558-00-BR	WINNEBAGO	16	7
CONTRACT NO. 85562				
FED. ROAD DIST. NO. 2 ILLINOIS FED. AID PROJECT				

SEE SHEET 13 FOR ADDITIONAL INFORMATION AT SIDEWALK RAMPS